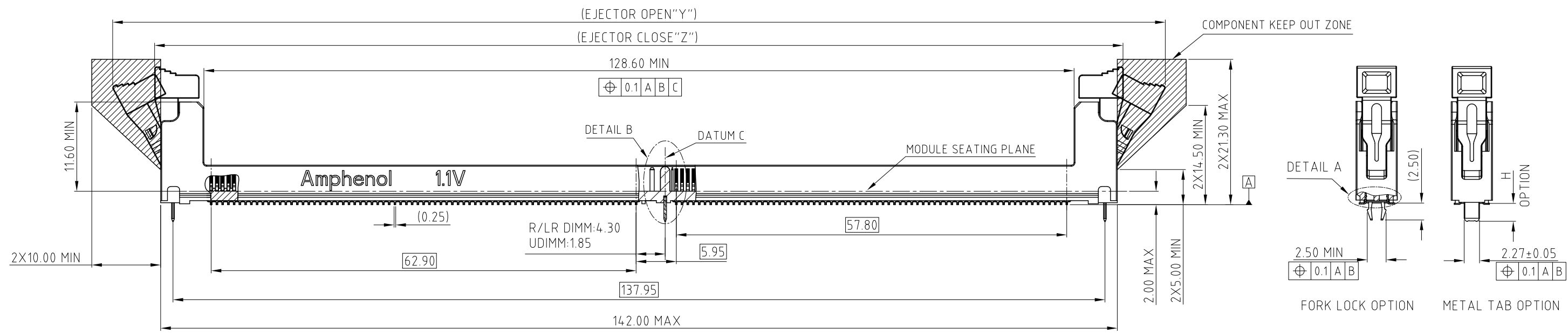
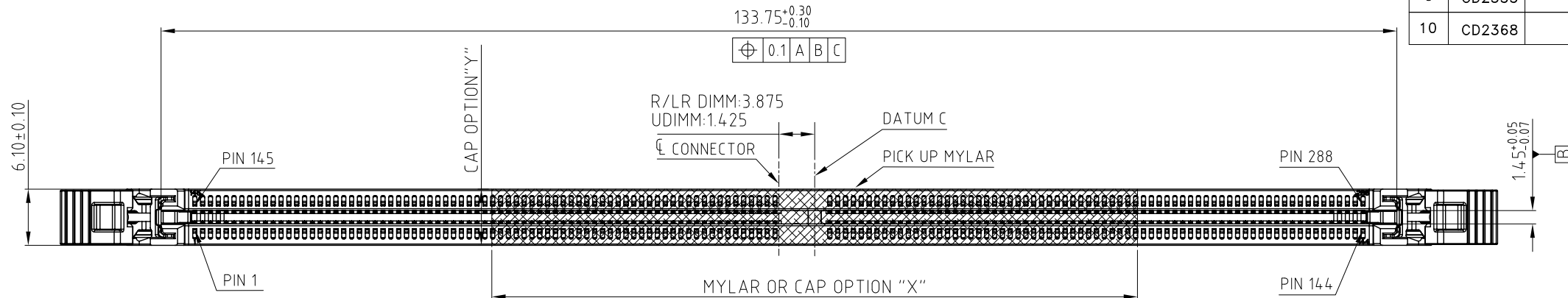


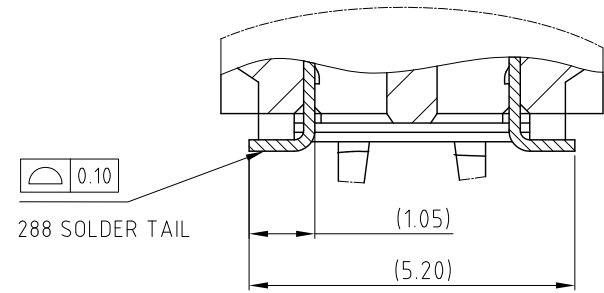
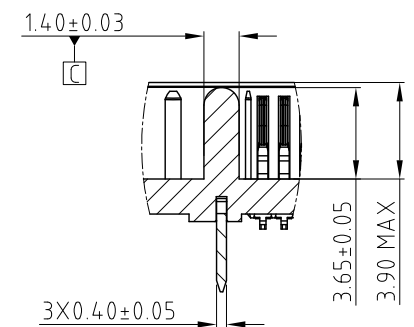
This document is the property of Amphenol Corporation and is delivered on the express condition that it is not to be disclosed, reproduced or used, in whole or in part, for manufacture or sale by anyone other than Amphenol Corporation without its prior consent, & that no right is granted to disclose or to use any information in this document.

CUSTOMER DRAWING

REVISIONS				
SYM	ECN	DESCRIPTION	DATE	APPROVED
8	CD2323	ADD THE CONTACT PLATED OPTION	Nov.17,2020	YH
9	CD2355	UPDATE THE STANDOFF	Dec.03,2020	YH
10	CD2368	UPDATE THE DIM OF MODULE ACCORDING TO JEDEC	Dec.11,2020	YH



ITEM	EJECTOR OPEN DIMENSION "Y"	EJECTOR CLOSE DIMENSION "Z"	EJECTOR FIGURE
STANDARD LATCH	156.00	144.00	

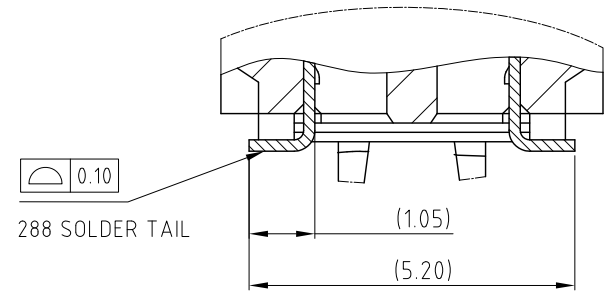
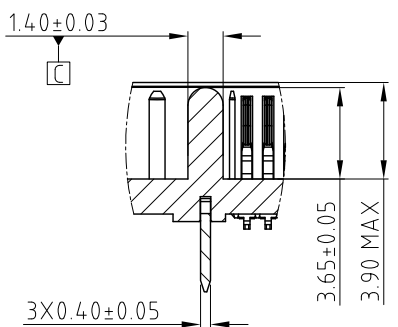
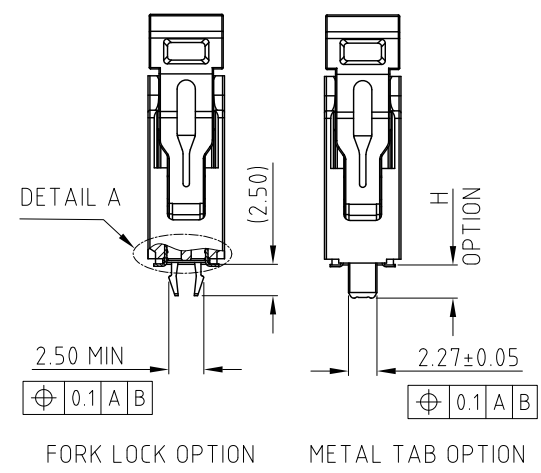
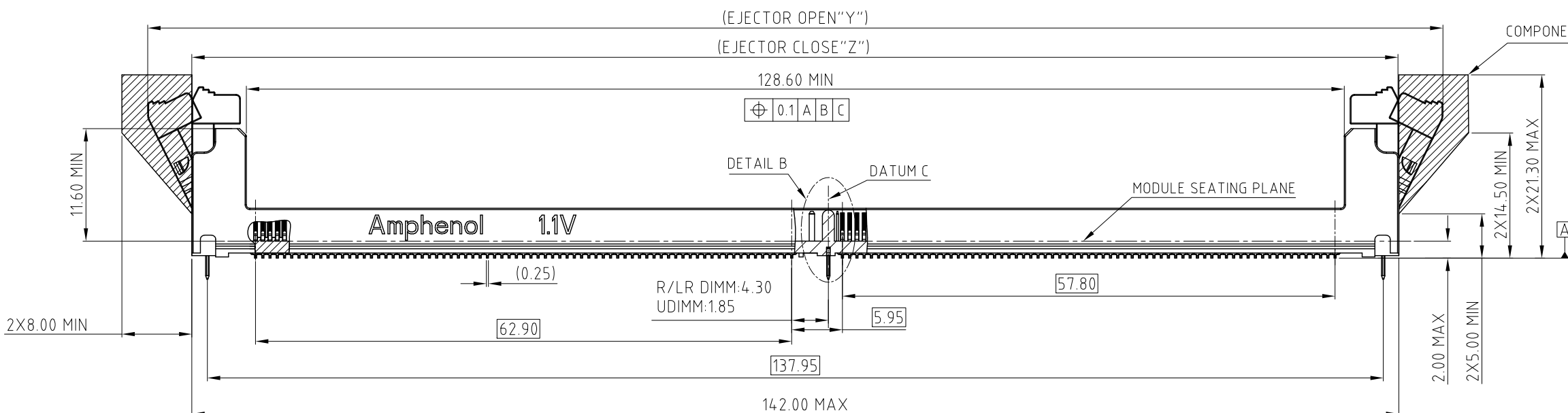
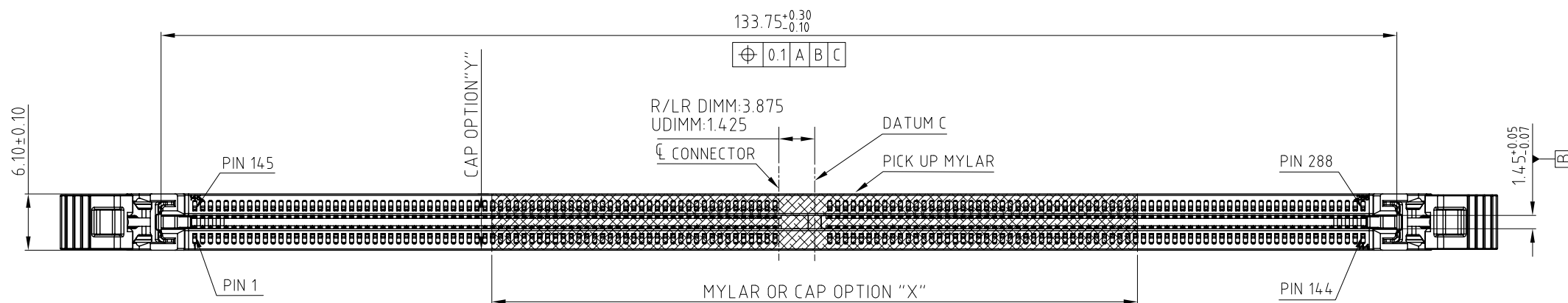


UNLESS OTHERWISE SPECIFIED TOLERANCES		APPROVAL	DATE	Amphenol
.X	+/-	0.35		
.XX	+/-	0.25		
.XXX	+/-	0.15		
FRACTIONS	+/-	3°		
ANGLES	+/-			
FOR MATERIALS AND FINISHES SEE NOTES		DRAWN	Kellen.Yang	Dec.11,2020
REMOVE SHARP EDGES		CHECKED		
DIMENSIONS		CHECKED		
U.S.	INCHES	DRAWING FILE : DRAWING\DDR\DDR504XXXXXXX		TITLE
(METRIC)	(MM)	ANGLE OF PROJECTION		DDR5 288P DIMM CONNECTOR
				SIZE
				DRAWING NO.
				REV.
				A3 C
				DDR5-04-X-X-X-XXX-X-X
				SCALE
				NONE
				SHEET 1 OF 6

This document is the property of Amphenol Corporation and is delivered on the express condition that it is not to be disclosed, reproduced or used, in whole or in part, for manufacture or sale by anyone other than Amphenol Corporation without its prior consent, & that no right is granted to disclose or to use any information in this document.

CUSTOMER DRAWING

REVISIONS				
SYM	ECN	DESCRIPTION	DATE	APPROVED
		SEE SHEET 1		



ITEM	EJECTOR OPEN DIMENSION "Y"	EJECTOR CLOSE DIMENSION "Z"	EJECTOR FIGURE
SHORT LATCH	152.00	142.00	

DETAIL B SCALE 2:1

DETAIL A SCALE 5:1

UNLESS OTHERWISE SPECIFIED TOLERANCES

	U.S.	METRIC
.X +/-		0.35
.XX +/-		0.25
.XXX +/-		0.15
FRACTIONS +/-		3°
ANGLES +/-		

FOR MATERIALS AND FINISHES SEE NOTES

REMOVE SHARP EDGES

DIMENSIONS	
U.S.	INCHES
(METRIC)	(MM)

APPROVAL		DATE
DRAWN	Kellen.Yang	Dec.11,2020
CHECKED		
CHECKED		

DRAWING FILE : DRAWING\DDR\DDR504XXXXXXX

ANGLE OF PROJECTION

Amphenol		
TITLE		
DDR5 288P DIMM CONNECTOR		
SIZE	DRAWING NO.	REV.
A3	C DDR5-04-X-X-X-XXX-X-X	10
SCALE	NONE	SHEET 2 OF 6

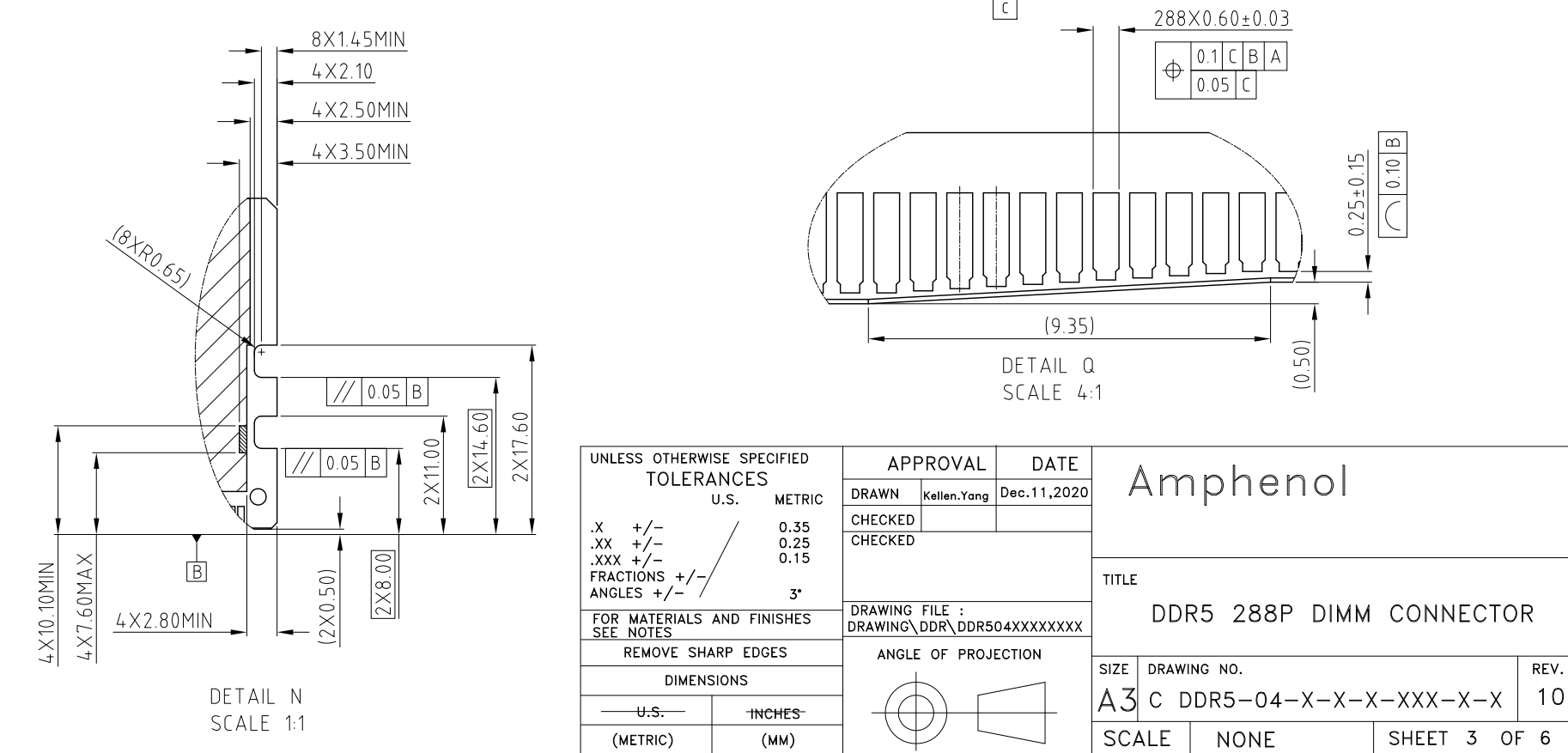
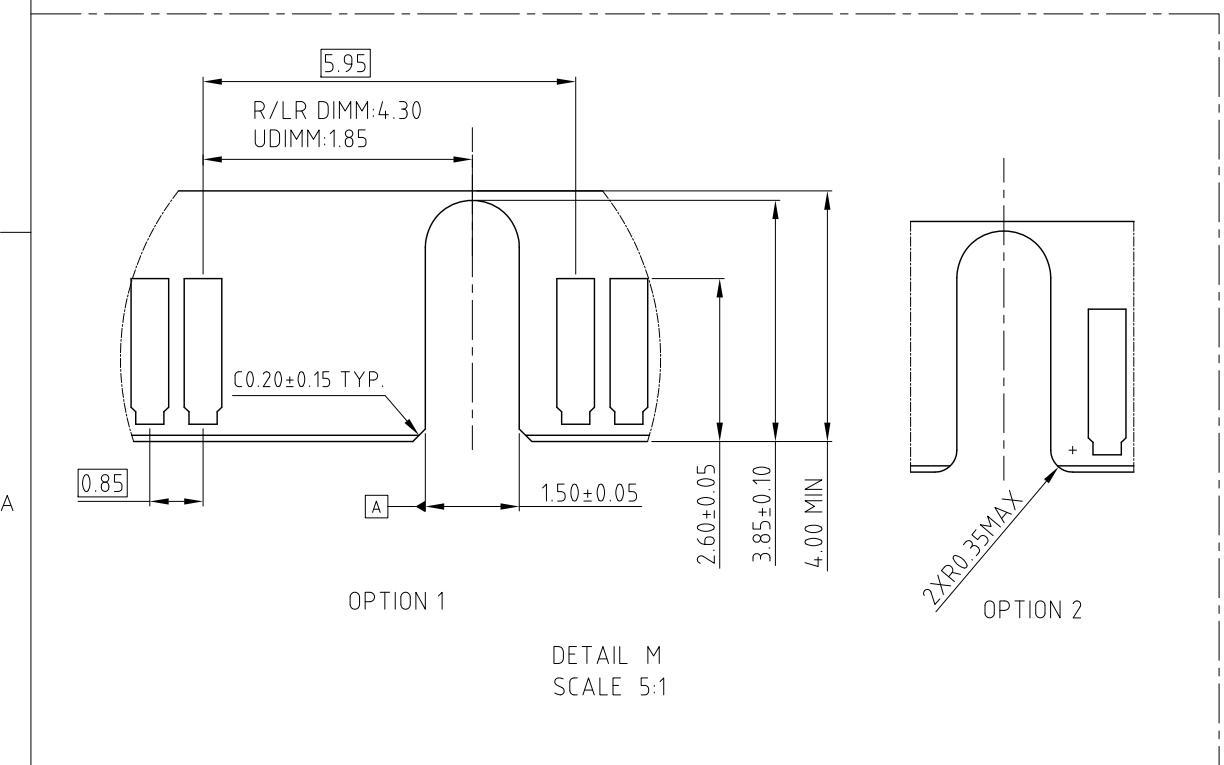
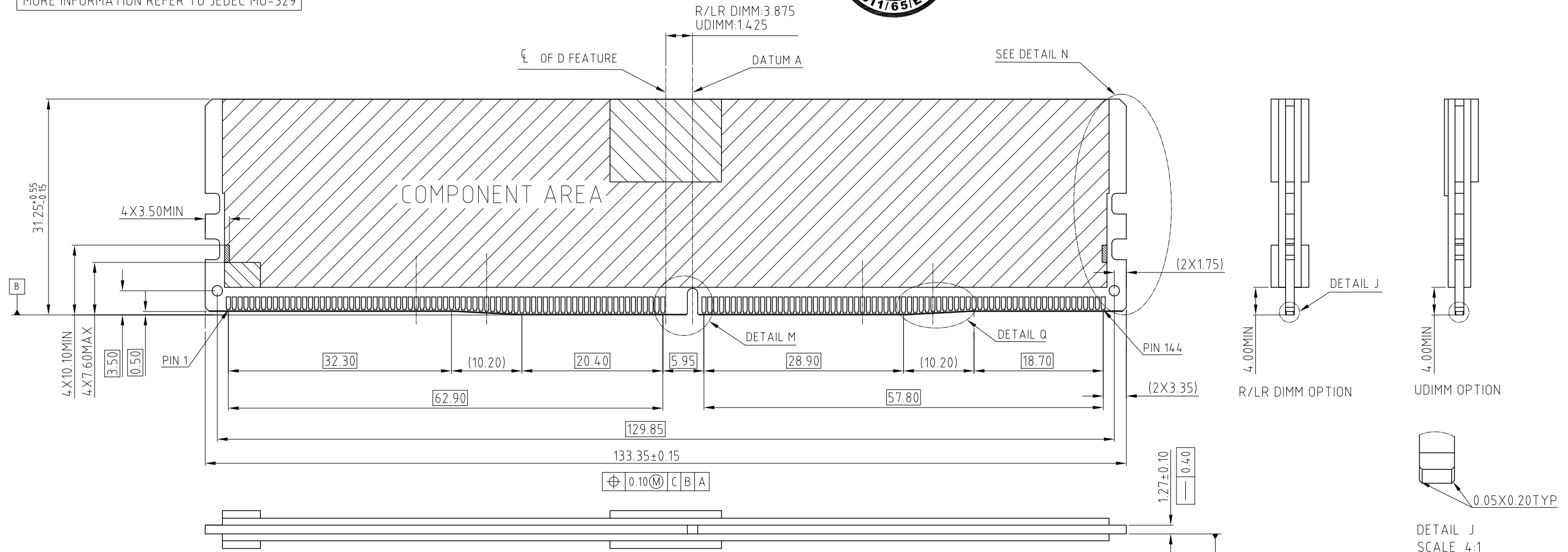
This document is the property of Amphenol Corporation and is delivered on the express condition that it is not to be disclosed, reproduced or used, in whole or in part, for manufacture or sale by anyone other than Amphenol Corporation without its prior consent, & that no right is granted to disclose or to use any information in this document.

CUSTOMER DRAWING



REVISIONS				
SYM	ECN	DESCRIPTION	DATE	APPROVED
		SEE SHEET 1		

DDR5 MODULE
MORE INFORMATION REFER TO JEDEC MO-329



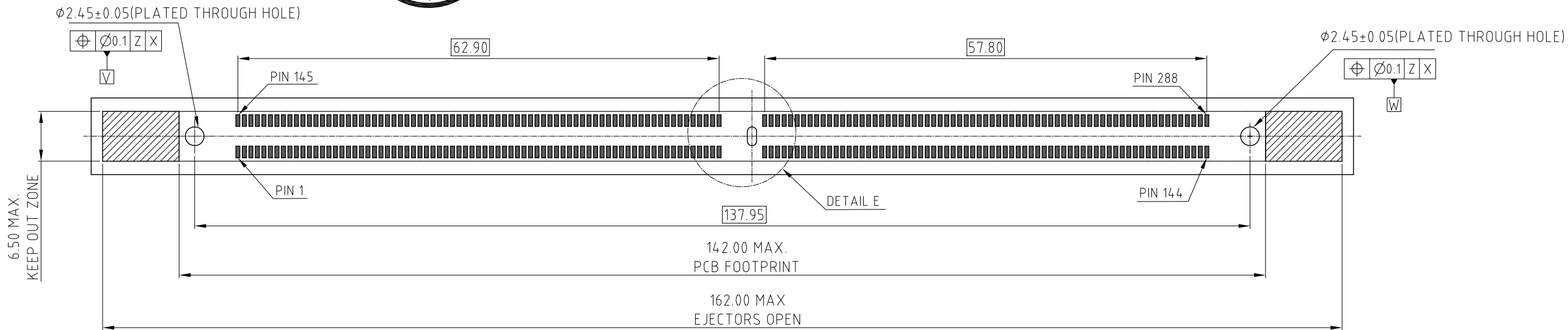
UNLESS OTHERWISE SPECIFIED TOLERANCES		APPROVAL	DATE	Amphenol
U.S.	METRIC	DRAWN	Dec. 11, 2020	
.X +/-	0.35	Kellen.Yang		TITLE DDR5 288P DIMM CONNECTOR
.XX +/-	0.25	CHECKED		
.XXX +/-	0.15	CHECKED		DRAWING FILE : DRAWING\DDR\DDR504XXXXXXX
FRACTIONS +/-	3°			
ANGLES +/-				ANGLE OF PROJECTION
FOR MATERIALS AND FINISHES SEE NOTES				
REMOVE SHARP EDGES				DRAWING NO. C DDR5-04-X-X-X-XXX-X-X
DIMENSIONS				
U.S.	INCHES			SCALE NONE
(METRIC)	(MM)			

This document is the property of Amphenol Corporation and is delivered on the express condition that it is not to be disclosed, reproduced or used, in whole or in part, for manufacture or sale by anyone other than Amphenol Corporation without its prior consent, & that no right is granted to disclose or to use any information in this document.

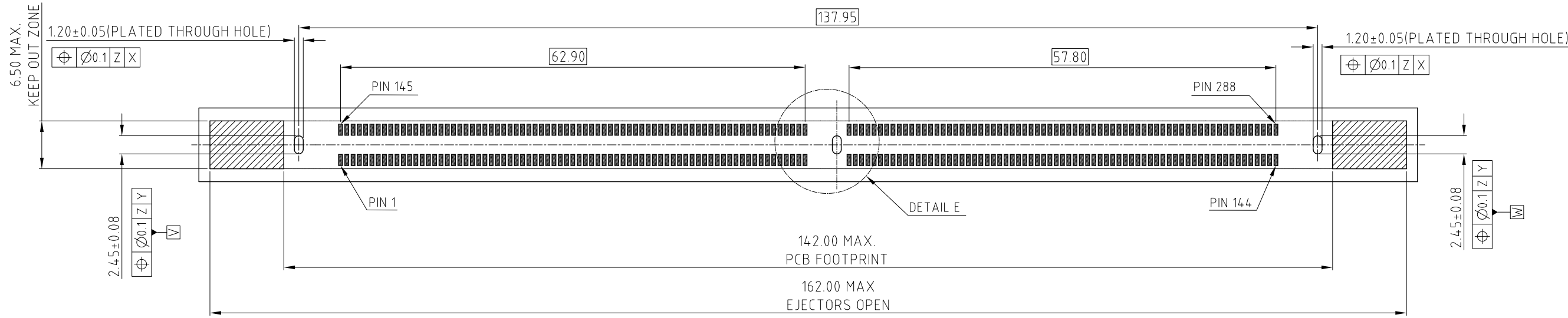


CUSTOMER DRAWING

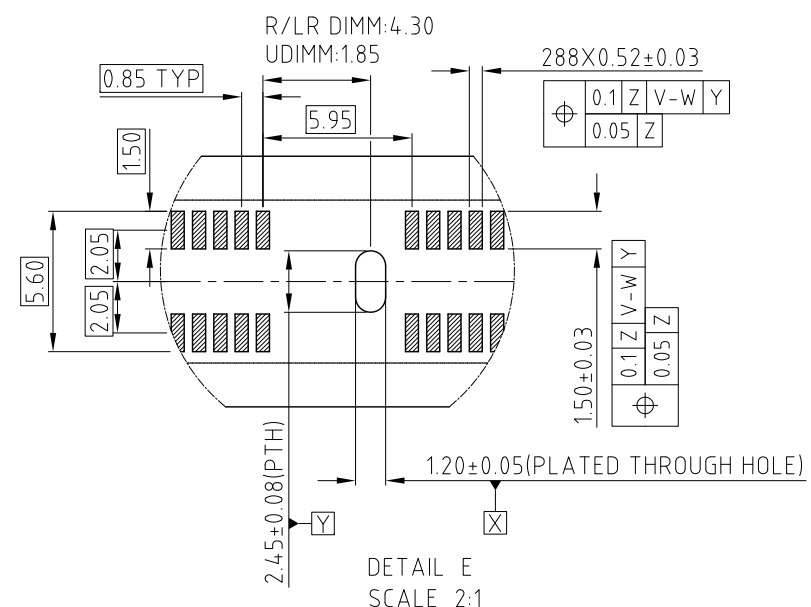
REVISIONS				
SYM	ECN	DESCRIPTION	DATE	APPROVED
		SEE SHEET 1		



RECOMMENDED PCB FOOTPRINT (OPTION 1)



RECOMMENDED PCB FOOTPRINT (OPTION 2)



- ADDITIONAL NOTES:
 1. RECOMMENDED STENCIL THICKNESS IS NOT LESS THAN 0.15mm

RECOMMENDED PCB LAYOUT
 MORE INFORMATION REFER TO JEDEC SO-023

UNLESS OTHERWISE SPECIFIED TOLERANCES		APPROVAL	DATE	Amphenol
U.S. METRIC		DRAWN Kellen.Yang	Dec.11,2020	
.X +/-	0.35	CHECKED		TITLE DDR5 288P DIMM CONNECTOR
.XX +/-	0.25	CHECKED		
.XXX +/-	0.15			SIZE DRAWING NO. REV. A3 C DDR5-04-X-X-X-XXX-X-X 10
FRACTIONS +/-				
ANGLES +/-	3°			SCALE NONE SHEET 4 OF 6
FOR MATERIALS AND FINISHES SEE NOTES		DRAWING FILE : DRAWING\DDR\DDR504XXXXXXX		
REMOVE SHARP EDGES		ANGLE OF PROJECTION		
DIMENSIONS				
U.S. (METRIC)	INCHES (MM)			

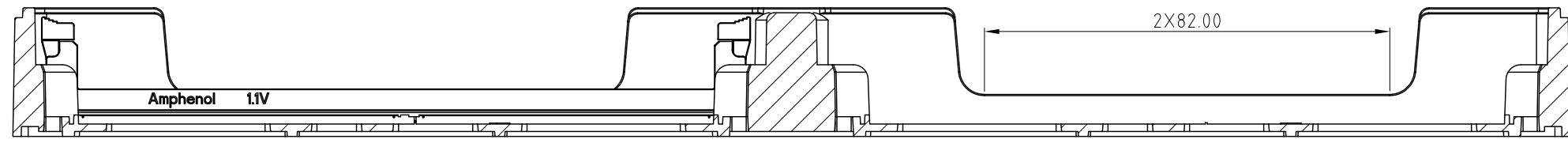
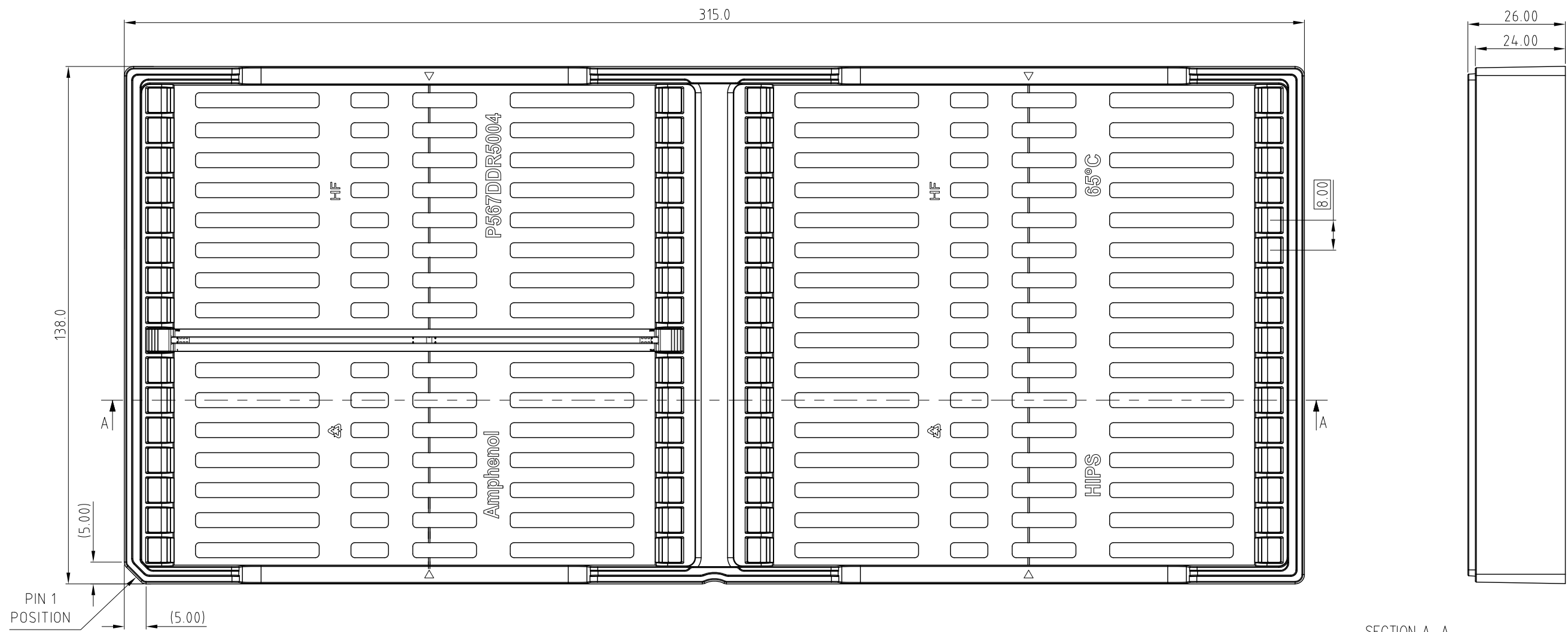
This document is the property of Amphenol Corporation and is delivered on the express condition that it is not to be disclosed, reproduced or used, in whole or in part, for manufacture or sale by anyone other than Amphenol Corporation without its prior consent, & that no right is granted to disclose or to use any information in this document.

CUSTOMER DRAWING



REVISIONS				
SYM	ECN	DESCRIPTION	DATE	APPROVED
		SEE SHEET1		

PACKING TRAY DRAWING



SECTION A-A

- NOTES:
 1. MATERIAL: HIPS, BLACK
 2. QUANTITY: 32PCS/TRAY

UNLESS OTHERWISE SPECIFIED TOLERANCES		APPROVAL		DATE		Amphenol	
U.S. METRIC		DRAWN Kellen.Yang		Dec.11,2020			
.X +/-	0.35	CHECKED				TITLE	
.XX +/-	0.25	CHECKED				DDR5 288P DIMM CONNECTOR	
.XXX +/-	0.15			DRAWING FILE : DRAWING\DDR\DDR504XXXXXXX		SIZE DRAWING NO. REV.	
FRACTIONS +/-				ANGLE OF PROJECTION		A3 C DDR5-04-X-X-X-XXX-X-X 10	
ANGLES +/-	3°					SCALE NONE SHEET 5 OF 6	
FOR MATERIALS AND FINISHES SEE NOTES							
REMOVE SHARP EDGES							
DIMENSIONS							
U.S. (METRIC)	INCHES (MM)						

CUSTOMER DRAWING

REVISIONS				
SYM	ECN	DESCRIPTION	DATE	APPROVED
		SEE SHEET1		

NOTES:

1. MATERIAL:
 - 1.1 HOUSING: HIGH TEMPERATURE THERMAL PLASTIC, OPTION, UL94V-0, COLOR:OPTION.
 - 1.2 LATCH: HIGH TEMPERATURE THERMAL PLASTIC, OPTION, UL94V-0, COLOR: OPTION.
 - 1.3 TERMINAL: COPPER ALLOY.
 - 1.4 BOARDLOCK: COPPER ALLOY.
2. FINISH:
 - 2.1 TERMINAL:
 - 2.1.1 CONTACT AREA: SELECTED GOLD PLATING;
 - 2.1.2 SOLDERING AREA: MATTE TIN PLATING 100u" THICKNESS MIN; UNDER PLATING: NICKEL PLATING 50u" THICKNESS MIN. OVERALL.
 - 2.2 BOARDLOCK:
 - 2.2.1 100u" MIN LEAD FREE MATTE TIN OVER 50u" MIN NICKEL UNDERPLATED OVERALL.
3. ELECTRICAL CHARACTERISTICS:
 - 3.1 CONTACT CURRENT RATING:1.0A MAX
 - 3.2 INSULATION RESISTANCE:1MEGOHMS MIN.AT500ADC.
 - 3.3 DIELECTRIC WITHSTANDING VOLTAGE:500 VDC AT SEA LEVEL.
 - 3.4 LOW LEVEL CONTACT RESISTANCE (DRY CIRCUIT):
 - INITIAL:40MILLIOHMS MAX.
 - FINAL:THE CHANGE IN LLCR BETWEEN THE READING AFTER STRESS AND THE INITIAL READING SHALL NOT EXCEED 20 MILLIOHMS MAX.
4. MECHANICAL CHARACTERISTICS:
 - 4.1 CONTACT RETENTION FORCE:300GF MIN/PER PIN.
 - 4.2 DURABILITY:25 CYCLES.
 - 4.3 THE FORCE TO MATE A MODULE WITH EJECTORS INSTALLED :106.8N MAX. THE FORCE TO PULL OUT A MODULE WITH EJECTORS INSTALLED :19.77N MIN.
5. ENVIRONMENTAL CHARACTERISTICS:
 - 5.1 SOLDERABILITY: PASSED PER EIA-364-52,CLASS 2,CATEGORY 3.
 - 5.2 VIBRATION: PASSED PER EIA-364-28.
 - 5.3 HUMIDITY: PASSED PER EIA-364-31.
 - 5.4 THERMAL SHOCK: PASSED PER EIA-364-32.
 - 5.5 MECHANICAL SHOCK: PASSED PER EIA-364-27.
 - 5.6 OPERATING TEMPERATURE:-55°C TO 85°C.
6. THIS PRODUCT IS HALOGEN-FREE COMPLIANT PRODUCT.
7. ORDER PN SYSTEM:



SEQUENCE NUMBER		
CODE	OPTION DESCRIPTION	FIGURE DIM "H"
001	1. STANDARD HOUSING 2. STANDARD LATCH 3. FORK LOCK	(2.50)
002	1. STANDARD HOUSING 2. STANDARD LATCH 3. METAL TAB	(2.65)
005	1. STANDARD HOUSING 2. SHORT LATCH 3. FORK LOCK	(2.50)
006	1. STANDARD HOUSING 2. SHORT LATCH 3. METAL TAB	(2.65)
007	1. STANDARD HOUSING 2. STANDARD LATCH 3. METAL TAB	(1.85)
008	1. STANDARD HOUSING 2. SHORT LATCH 3. METAL TAB	(1.85)
.....		

DDR5 XX X X X XXX X X

- DOUBLE DATA RATE 5 SERIES
- XX: APPLICATION TYPE
 03: SMT,288P, UDIMM CONNECTOR
 04: SMT,288P, R/LR DIMM CONNECTOR

- X: HOUSING COLOR
 1: BLACK
 2: NATURAL (IVORY)
 3: YELLOW
 4: BLUE

- X: LATCH COLOR
 1: BLACK
 2: NATURAL (IVORY)
 3: YELLOW
 4: BLUE

- X: CUSTOMER CODE OPTION:
 BLANK
 0.....
 9
 A.....
 Z
- X: PACKING AND MYLAR OPTIONS
 T: SOFT TRAY
 H: HARD TRAY PACKAGE, WITH MYLAR "X"=40MM
 J: HARD TRAY PACKAGE, WITH MYLAR "X"=70MM
 K: HARD TRAY PACKAGE, WITHOUT MYLAR
 M: HARD TRAY PACKAGE, WITH MYLAR "X"=90MM
 C: HARD TRAY PACKAGE,WITH CAP "X"=70MM;"Y"=6MM

SEE SEQUENCE NUMBER TABLE

- X: CONTACT PLATED
 0: GOLD FLASH
 1: 15u" Au ON CONTACT AREA
 2: 30u" Au ON CONTACT AREA
 3: 15u" MIN GXT
 4: 30u" MIN GXT
 5: 15u" Au ON CONTACT AREA AND 90u" Ni MIN ON UNDERPLATING:
 6: 30u" Au ON CONTACT AREA AND 90u" Ni MIN ON UNDERPLATING:
 7: 50u" Au ON CONTACT AREA
 8: 18u" AU ON CONTACT AREA

UNLESS OTHERWISE SPECIFIED TOLERANCES U.S. METRIC .X +/- 0.35 .XX +/- 0.25 .XXX +/- 0.15 FRACTIONS +/- ANGLES +/- 3°	APPROVAL	DATE	Amphenol
	DRAWN Kellen.Yang	Dec.11,2020	
FOR MATERIALS AND FINISHES SEE NOTES	CHECKED	CHECKED	TITLE
REMOVE SHARP EDGES	DRAWING FILE : DRAWING\DDR\DDR504XXXXXXX		DDR5 288P DIMM CONNECTOR
DIMENSIONS	ANGLE OF PROJECTION		SIZE DRAWING NO.
U.S. INCHES			A3 C DDR5-04-X-X-X-XXX-X-X
(METRIC) (MM)			SCALE NONE SHEET 6 OF 6
			REV. 10