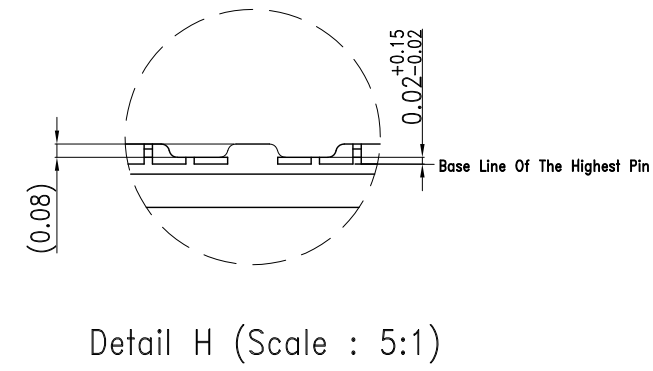
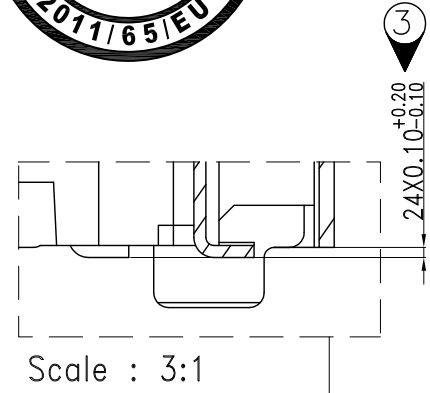
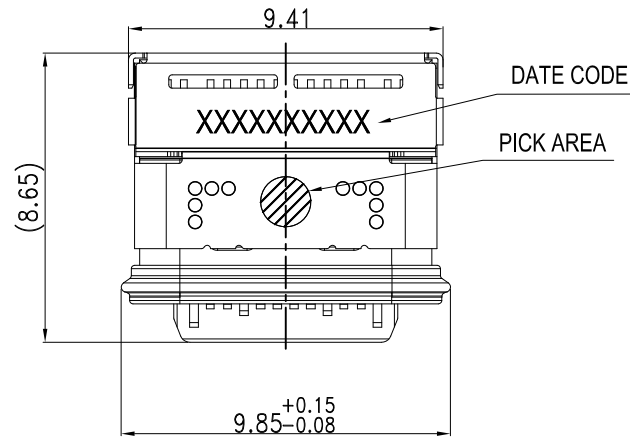


This document is the property of Amphenol Corporation and is delivered on the express condition that it is not to be disclosed, reproduced or used, in whole or in part, for manufacture or sale by anyone other than Amphenol Corporation without its prior consent, & that no right is granted to disclose or to use any information in this document.

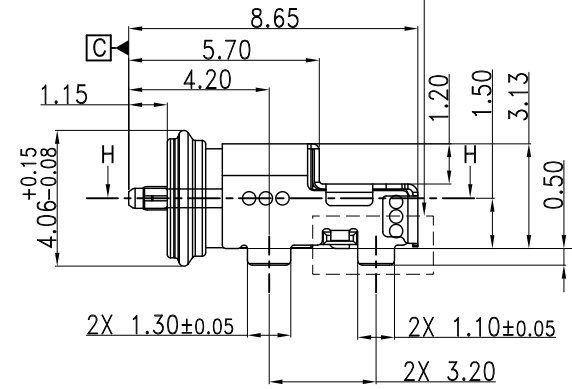
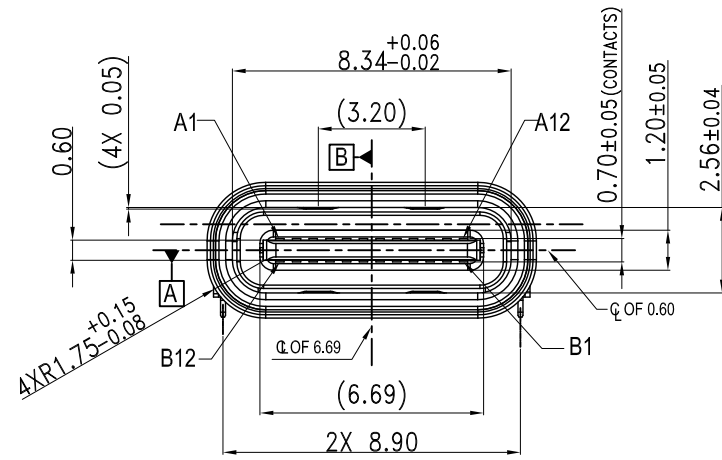
CUSTOMER DRAWING



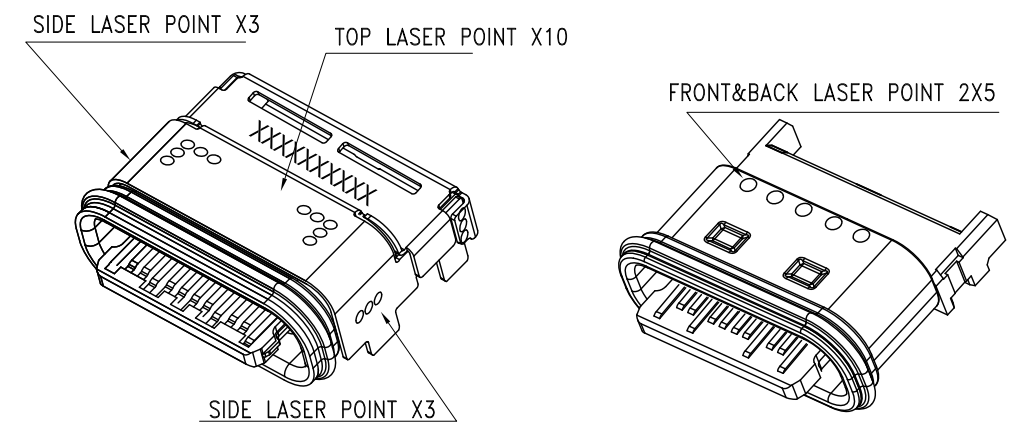
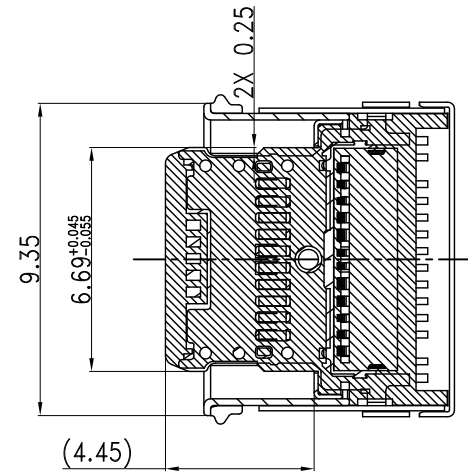
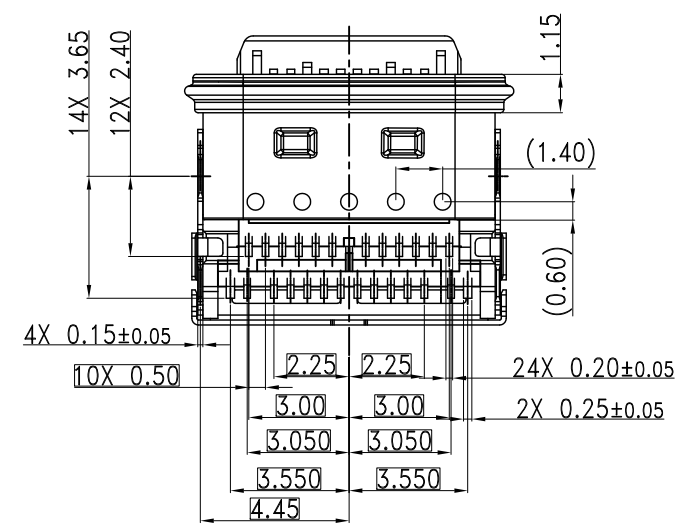
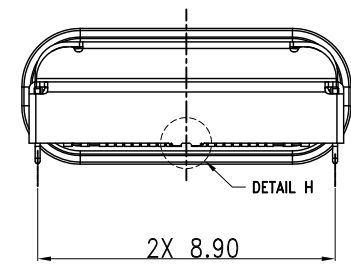
REVISIONS				
SYM	ECN	DESCRIPTION	DATE	APPROVED
1	20XXXXXX	NEW RELEASE	2020/01/09	Tom.Tang
2	20XXXXXX	Add packing hint	2020/03/04	Tom.Tang
3	20XXXXXX	Increase boss size control	2020/04/21	IP
4	20XXXXXX	Update PCB size	2020/04/21	IP
5	20XXXXXX	Update PCB size	2020/07/22	IP



Pin No	Signal Name	Mating Sequence	Pin No	Signal Name	Mating Sequence
A1	GND	First	B12	GND	First
A2	TX1+	Second	B11	RX1+	Second
A3	TX1-	Second	B10	RX1-	Second
A4	Vbus	First	B9	Vbus	First
A5	CC1	Second	B8	SBU2	Second
A6	D+	Second	B7	D-	Second
A7	D-	Second	B6	D+	Second
A8	SBU1	Second	B5	CC2	Second
A9	Vbus	First	B4	Vbus	First
A10	RX2-	Second	B3	TX2-	Second
A11	RX2+	Second	B2	TX2+	Second
A12	GND	First	B1	GND	First
SHELL	GND		SHELL	GND	



- 0.08 24X SMT TAILS (BEFORE IR)
- 0.10 24X SMT TAILS (AFTER IR)



UNLESS OTHERWISE SPECIFIED TOLERANCES U.S. METRIC .X +/- 0.50 .XX +/- 0.15 .XXX +/- 0.10 FRACTIONS +/- ANGLES +/- 3° FOR MATERIALS AND FINISHES SEE NOTES REMOVE SHARP EDGES DIMENSIONS U.S. INCHES (METRIC) (MM)	APPROVAL DRAWN Alec.II CHECKED Michael.qin CHECKED	DATE 01/09/20 01/09/20	Amphenol Amphenol East Asia Limited TITLE Customer Drawing For USB 3.1 GEN1, Type C socket connector, R/A ,top mount, Double SMT type, CH=1.50mm, Waterproof IPX8 SIZE DRAWING NO. A3 C 12401880 SCALE NONE SHEET 1 OF 2 REV. 5
	DRAWING FILE : R:\DCI\Engineering data\RD\I.工程图客户图		
	ANGLE OF PROJECTION 		
	DIMENSIONS U.S. INCHES (METRIC) (MM)		

