

6

5

4

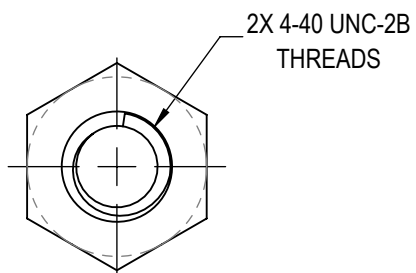
3

2

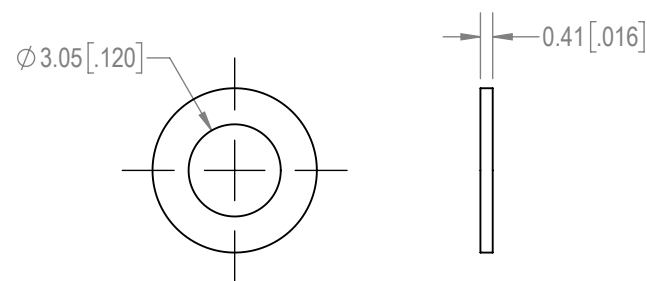
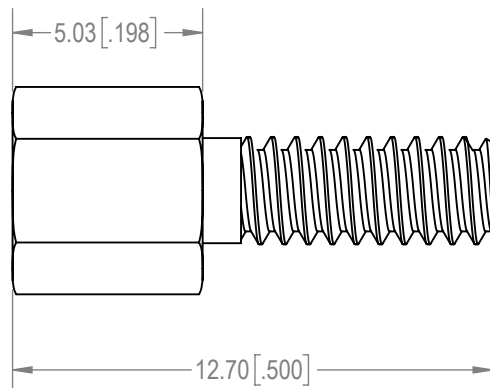
1

D

D



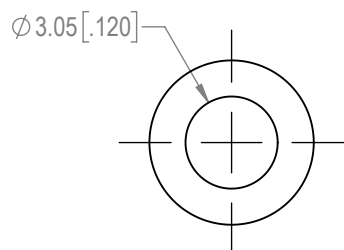
2X JACKSCREWS



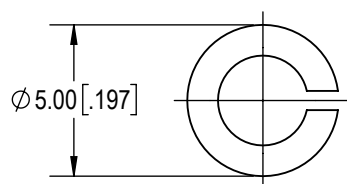
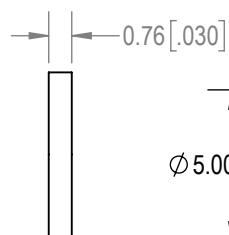
2X WASHERS

C

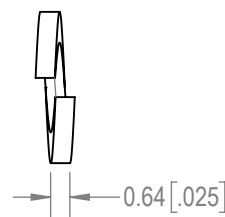
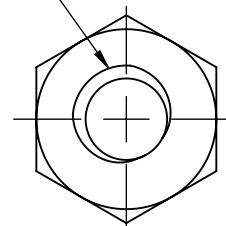
C



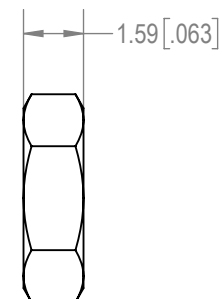
2X WASHERS



2X SPRING LOCK WASHERS

2X 4-40 UNC-2B
THREADS

2X HEX NUTS



B

B

NOTES:

1. MATERIALS AND FINISHES:

JACKSCREWS: STAINLESS STEEL, PASSIVATED.

WASHERS: STAINLESS STEEL, PASSIVATED.

SPRING LOCKWASHERS: STAINLESS STEEL, PASSIVATED.

HEX NUTS: STAINLESS STEEL, PASSIVATED.

2. DETAILED PRODUCT, MECHANICAL AND ELECTRICAL INFORMATION IS AVAILABLE IN THE LATEST MACH-D HIGH PERFORMANCE D-SUB PRODUCT PUBLICATION AT CONNECTPOSITRONIC.COM.

3. COMPONENTS ARE COMPLIANT TO THE CURRENT RoHS DIRECTIVE.

A

A

BY SM	CHK AB	3RD ANGLE 	POSITRONIC BELIEVES THE DATA ON THE DRAWING TO BE RELIABLE. THE USER EMPLOYS SUCH INFORMATION AT HIS OWN DISCRETION AND RISK. POSITRONIC ASSUMES NO RESPONSIBILITY FOR RESULTS OBTAINED OR DAMAGES INCURRED FROM USE OF SUCH INFORMATION IN WHOLE OR IN PART.	 Positronic® CONNECTPOSITRONIC.COM
APR PA	RELEASED DATE: 2022-02-18	SCALE NTS		
TOLERANCES ±0.03mm [.001 INCHES] FOR MALE CONTACT MATING DIAMETERS ±0.08mm [.003 INCHES] FOR CONTACT TERMINATION DIAMETERS ±0.13mm [.005 INCHES] FOR ALL OTHER DIAMETERS ±0.38mm [.015 INCHES] FOR ALL OTHER DIMENSIONS ±5° FOR ALL ANGLES DIMENSION ARE IN MILLIMETERS [INCHES]			PART NUMBER MCD00000T2S/AA	SERIES MACH-D
			TITLE MCD00000T2S/AA	
CREATED ON: 2022-02-18		SHEET SHEET 1 OF 1	REV A	

6

5

4

3

2

1