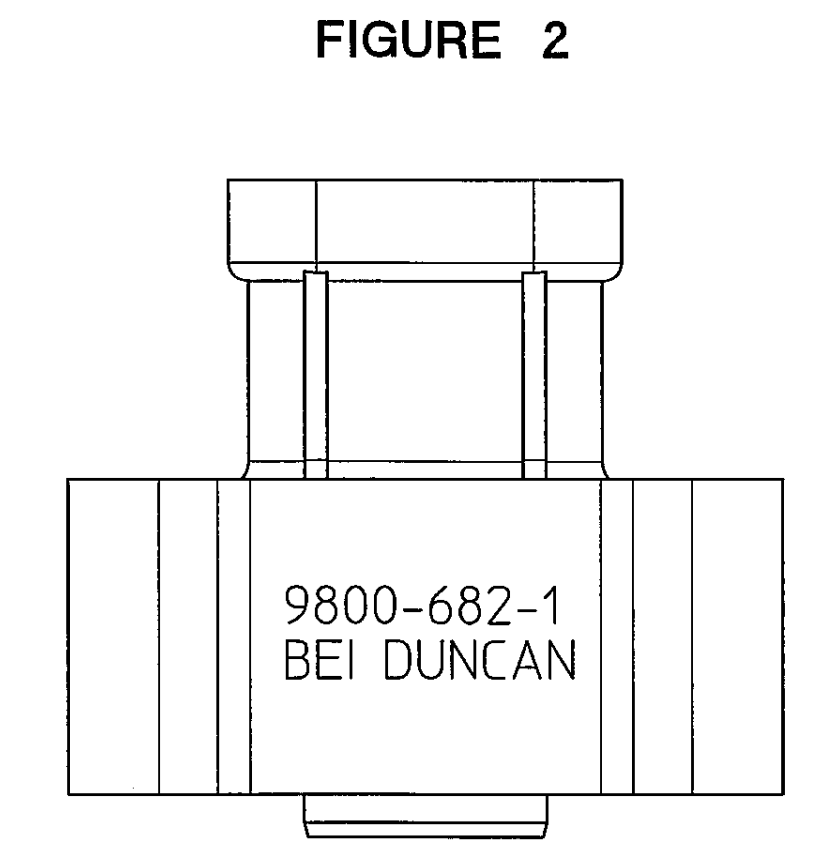
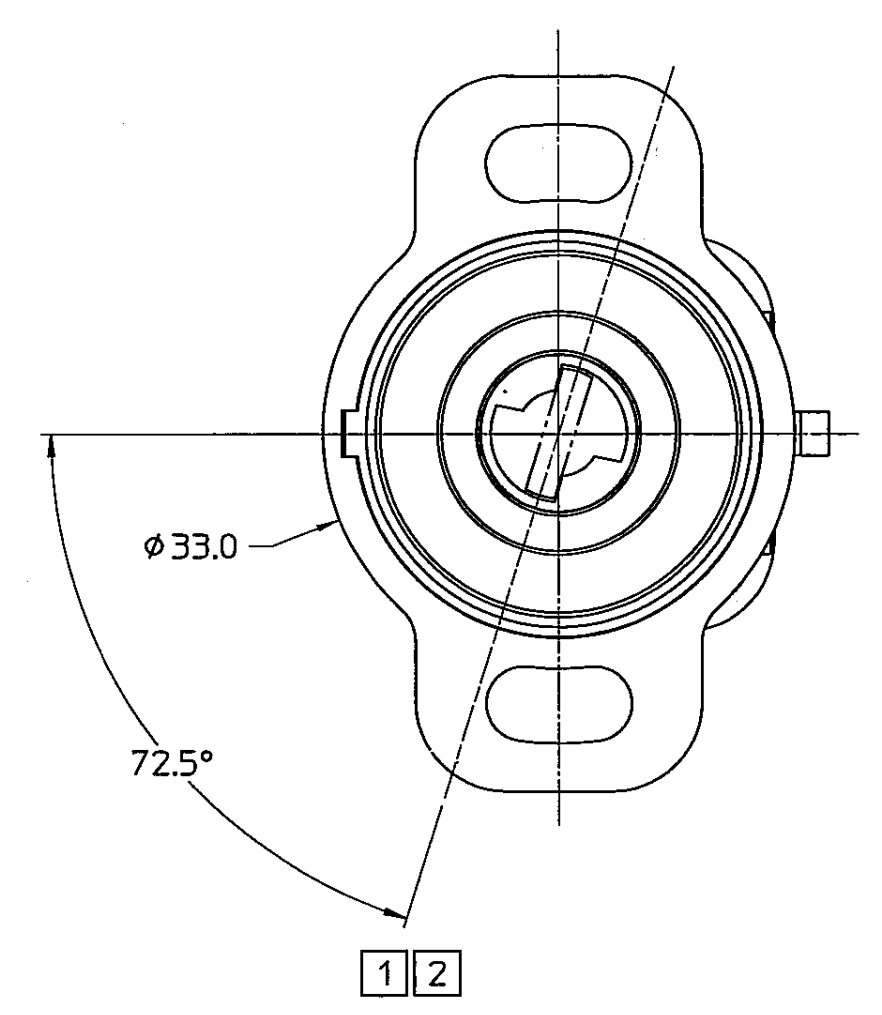
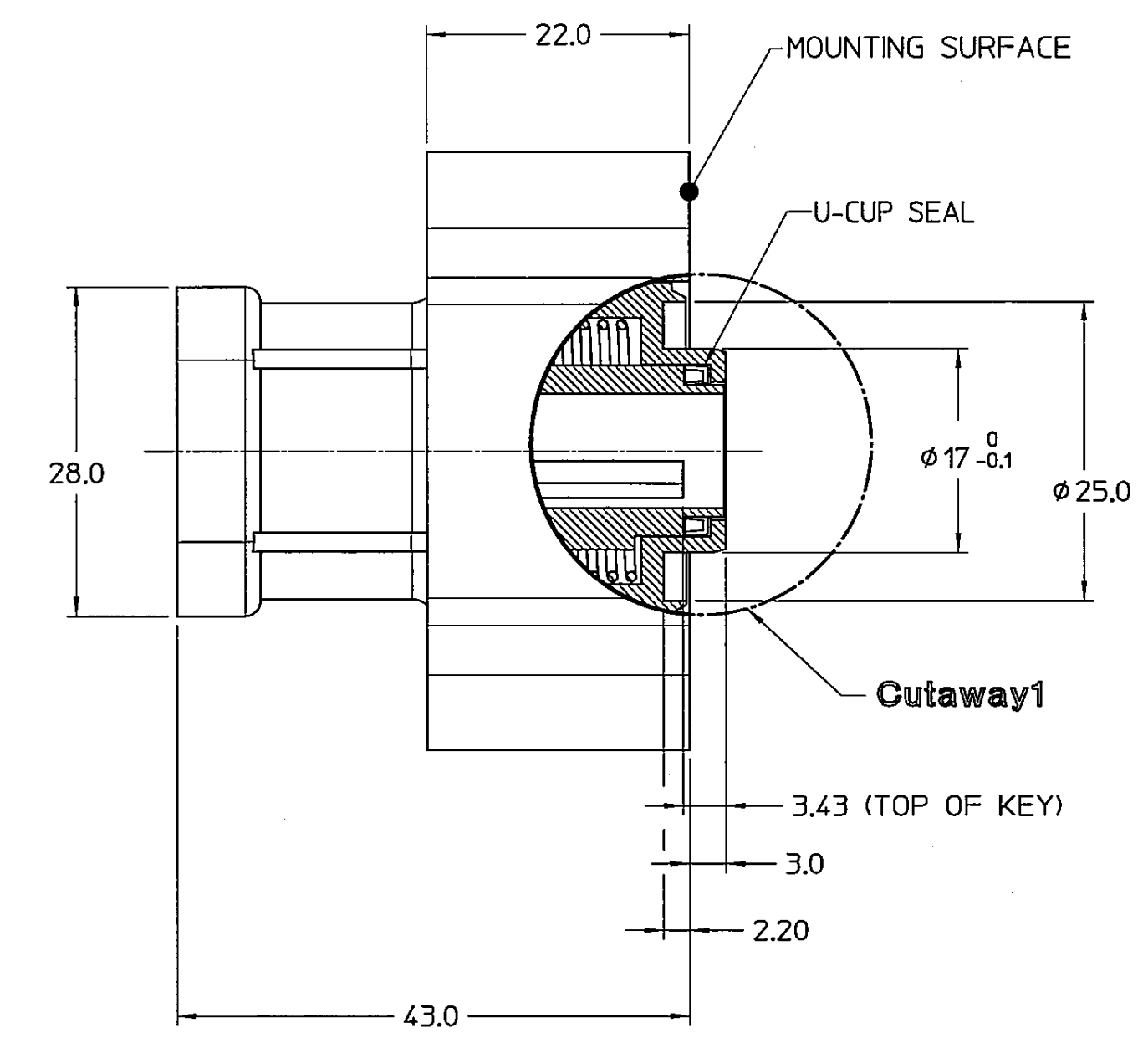


FEMALE CONNECTOR MATES WITH PACKARD ELECTRIC WEATHER PACK PANEL CONNECTOR. [3]

PART	REQ'D	PACKARD ELECTRIC	WAYTEC INC.
BODY	1	12015793	38045
TERMINAL	3	12033674	30034
SEAL*	3	12015284	39000

*SEAL IS FOR 18-20 GA. SXL WIRE.

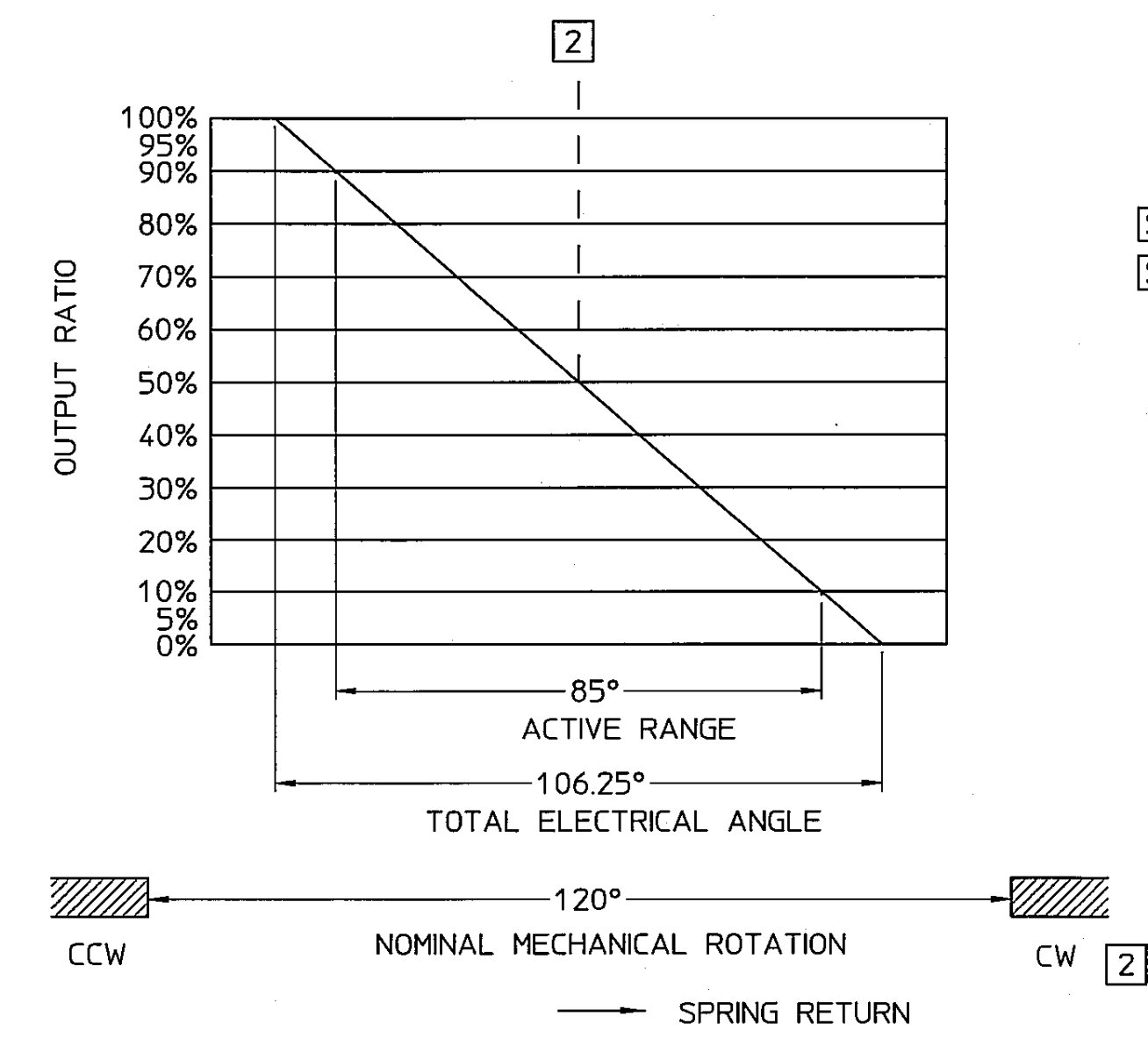


1. PERMANENTLY MARK AS SHOWN IN FIG. 2

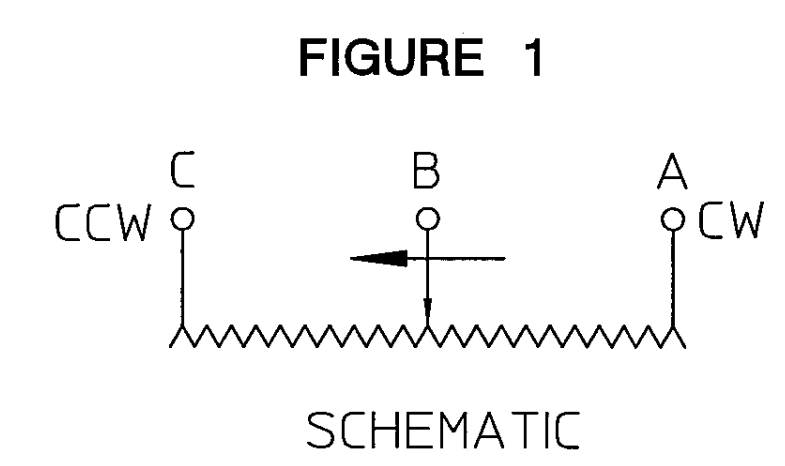
MARKING DIAGRAM

CONNECTOR PIN OUTPUT	
Vs	C
GROUND	A
OUTPUT	B

PERFORMANCE SPECS:	
1. TOTAL ELECTRICAL ANGLE	----- 106.25°
2. ACTIVE RANGE	----- 85°
3. MECHANICAL ROTATION	----- 120°
4. LINEARITY, ACTIVE RANGE	----- ±2.0% (IND)
5. RT	----- 2.5K±20%
6. ACTIVE TORQUE	----- 0.01 TO 0.1 N-M THROUGH OUT MECHANICAL ROTATION



[SIG] [SIG]



- [1] DRIVING BLADE SHOWN AT FULL CCW STOP POSITION 2.0 THICK x 9.0 WIDE 13.0 MAX. PENETRATION INTO ROTOR BEYOND SURFACE A.
- [2] SPRING RETURNS ROTOR TO CLOCKWISE END.
- [3] MATING CONNECTOR PART NUMBERS: (NOT SUPPLIED BY BEI DUNCAN).
- 4. DIMENSIONAL TOLERANCE: .X = ±0.5mm / .XX = 0.25mm

[C] IDENTIFIES FEATURES THAT ARE DESIGNATED SIGNIFICANT BY CUSTOMER.
 [SIG] IDENTIFIES FEATURES THAT SIGNIFICANTLY AFFECT FIT OR FUNCTION AND WHICH REQUIRE ADDITIONAL CONTROL PER THE DUNCAN ELECTRONICS QUALITY SYSTEM DOCUMENTATION.
 [SPC] IDENTIFIES FEATURES THAT SHALL BE MONITORED FOR PROCESS CONTROL AND FOR WHICH STATISTICAL DATA SHALL BE SUBMITTED PER THE DUNCAN ELECTRONICS QUALITY SYSTEM DOCUMENTATION.
 NOTES: UNLESS OTHERWISE SPECIFIED

CUST. P/N (057550-014)	CUSTOMER TELEFLEX MORSE CONTROLS	SPEC. MODEL NUMBER 9800-682-1
<small>This document and all information contained herein are proprietary and are the sole property of BEI Duncan Electronics Division and shall not be reproduced or disclosed without written authorization. Use of this information for the purpose of manufacture does not constitute the release of the proprietary rights thereto.</small>		
<small>UNLESS OTHERWISE SPECIFIED DIMENSIONS ARE IN INCHES PER ASME Y14.5M</small> TOLERANCES ARE: DECIMALS ANGLES .XX ±0.10 ±1° .XXX ±0.05 .XXXX ±0.005 DIAMETERS SHOWN ON COMMON CENTERS [Z] [0.05] FEATURES SHOWN ON COMMON CENTERS [±] [0.05] INSIDE/OUTSIDE RADIUS .005 MAX. DO NOT SCALE DRAWING	THIRD ANGLE PROJECTION APPROVALS: WOOD DATE: 14/AUG/06 CHECKED: [Signature] DESIGN ENG.: [Signature] ENG. APPROVAL: [Signature]	TITLE SPEC & OUTLINE SIZE: D CASE CODE: 11534 DWG NO.: 9800-682-1-0 REV.: A
SCALE: 2X	PAGE 1 OF 1	