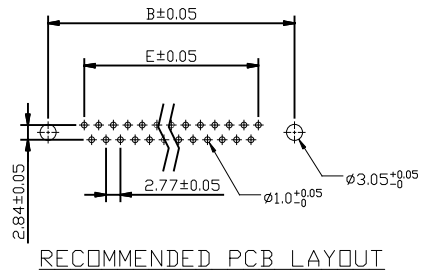
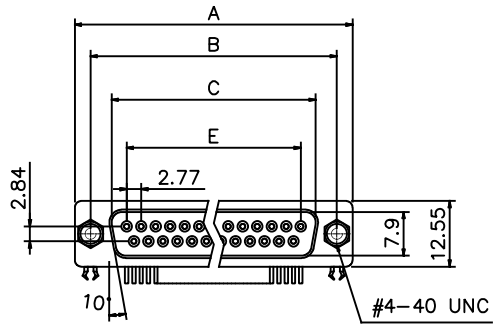


REVISIONS			
REV	DESCRIPTION, ECN, EAR NO.	DATE	APP'D
A	DRAWING PER EAR XXXX	TBD	TBD

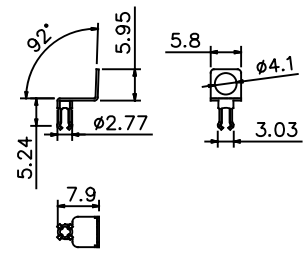
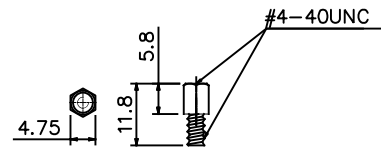
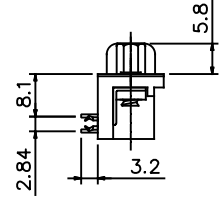
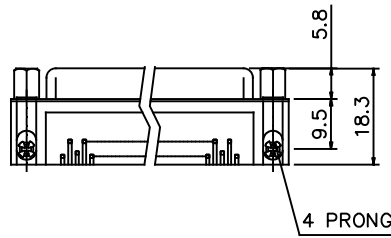


Product Specification

Material
 Insulator : Glass-Filled Thermoplastic PBT, UL94V-0
 Contact : Brass
 Shell : Steel, 100u" Tin Over 50u" min Copper
 Clinch Nut : Copper alloy, Nickel Plated.
 Boardlock : Brass, Tin Plated.
 Screwlock : Steel, Nickel Plated.

Electrical

Contact Resistance : 20 milliohms
 Max at 1 AMP DC.
 Insulation Resistance : 1000
 megohms at 500 VDC
 Dielectric Withstanding Voltage :
 1000 VAC/rms 60Hz for 1 minute
 Current Rating : 3AMP
 Volatge Rating : 250 VAC/rms 60Hz



#4-40 unc screwlock installed

7.2mm Footprint

Dimensions	Positions	A	B	C	E
	9	30.81	24.99	16.92	11.08
	15	39.20	33.30	25.25	19.39
	25	53.05	47.04	38.96	33.24
	37	69.40	63.50	55.42	49.86

ORDERING CODE: NFD17-EXXSA-FC1D-A

NUMBER OF CONTACTS:

- 09: 09 POSITION
- 15: 15 POSITION
- 25: 25 POSITION
- 37: 37 POSITION



UNLESS SPECIFIED OTHERWISE	DRAWN ED.LIU	JUL22/22
PRIMARY UNITS MILLIMETERS	CHECKED TBD	TBD
SECONDARY	M.E. APP'D	
REFERENCE IN PARENTHESES	Q.A. APP'D	
GENERAL TOLERANCES	DWG APP'D TBD	TBD
1 DECIMAL PLACE ±0.38	ENG. REL. NO. EAR XXXX	
2 DECIMAL PLACES ±0.25	REF.	
3 DECIMAL PLACES	THIRD ANGLE PROJECTION	
ANGULAR DEGREES ±2°	DO NOT SCALE DRAWING	

Amphenol Canada Corp. Commercial Products	
NFD17 SERIES D-SUB, 9 SIZE SOCKET, R/A P.C.B TAIL, RoHS COMPLIANT	
DWG NO.	REV
P-NFD17-EXXSA-FC1D-A	A
CODE ID NO. 03554	DWG SIZE X SCALE XX:1 SHEET 1 OF 1