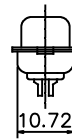
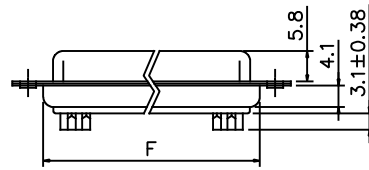
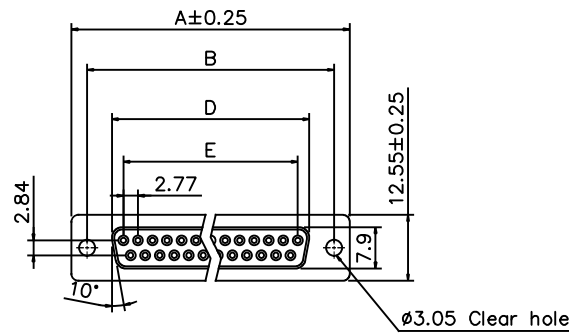
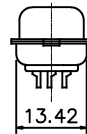
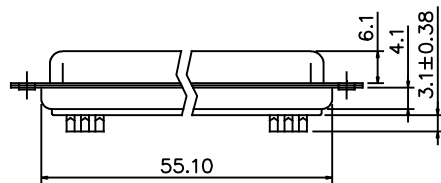
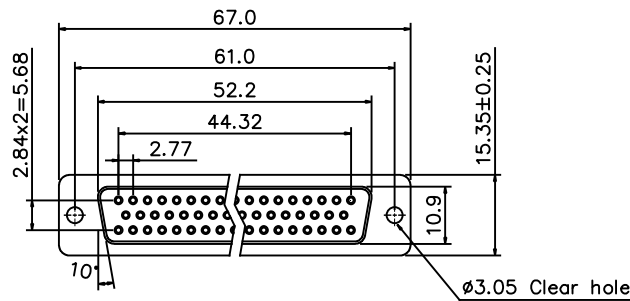


REVISIONS			
REV	DESCRIPTION, ECN, EAR NO.	DATE	APP'D
A	DRAWING PER EAR XXXX	TBD	TBD



Dimensions

Positions	A	B	D	E	F
9	30.81	24.99	16.33	11.08	19.20
15	39.20	33.30	24.70	19.39	27.70
25	53.05	47.04	38.40	33.24	41.10
37	69.40	63.50	54.80	49.86	57.30



50 Positions

Product Specification

Material

Insulator : Glass-Filled Thermoplastic PBT,UL94V-0

Contact : Copper alloy

Shell : Steel, 100u" Tin Over 50u" min Copper

Electrical

Contact Resistance : 20 milliohms

Max at 1 AMP DC.

Insulation Resistance : 1000 magohms at 500 VDC

Dielectric Withstanding Voltage : 1000 VAC/rms 60Hz for 1 minute

Current Rating : 3 AMP

Volatge Rating : 250 VAC/rms 60Hz

Operation Temperature : -55°C to +105°C

Storage Temperature : -20°C to +85°C

ORDERING CODE: NFD17-AXXSB-2E1B-A

NUMBER OF CONTACTS:

09: 09 POSITION

15: 15 POSITION

25: 25 POSITION

37: 37 POSITION

UNLESS SPECIFIED OTHERWISE	DRAWN ED.LIU	JUL22/22
PRIMARY UNITS MILLIMETERS	CHECKED TBD	TBD
SECONDARY	M.E. APP'D	
REFERENCE IN PARENTHESES	Q.A. APP'D	
GENERAL TOLERANCES	DWG APP'D TBD	TBD
1 DECIMAL PLACE ±0.38	ENG. REL. NO. EAR XXXX	
2 DECIMAL PLACES ±0.25	REF.	
3 DECIMAL PLACES		
ANGULAR DEGREES ±2°	THIRD ANGLE PROJECTION	DO NOT SCALE DRAWING

Amphenol Canada Corp.
Commercial Products

NFD17 SERIES FEMALE
D-SUB CONNECTOR,
RoHS COMPLIANT

DWG NO.	P-NFD17-AXXSB-2E1B-A	REV	A
CODE ID NO.	03554	DWG SIZE	X
SCALE	XX:1	SHEET	1 OF 1