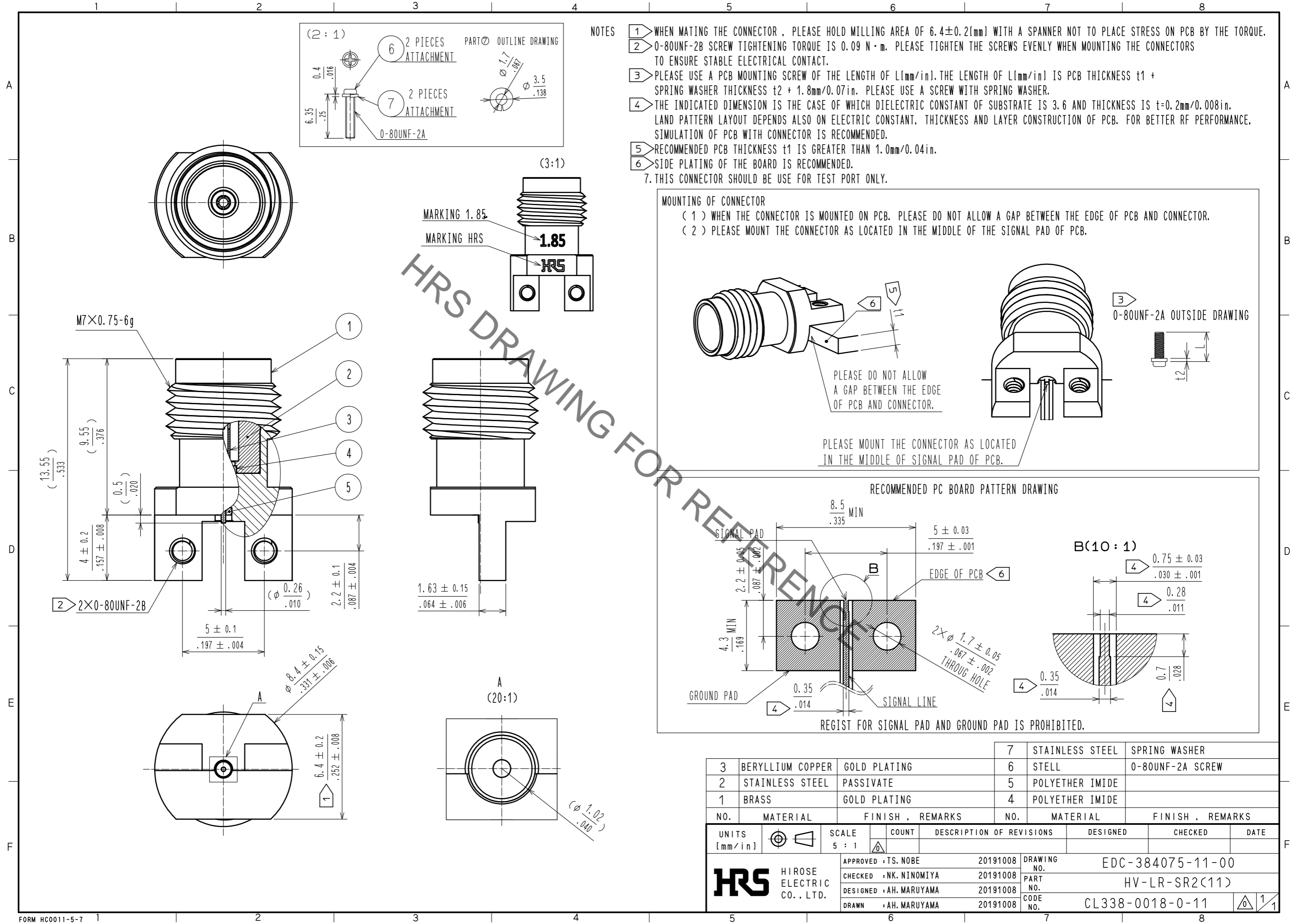
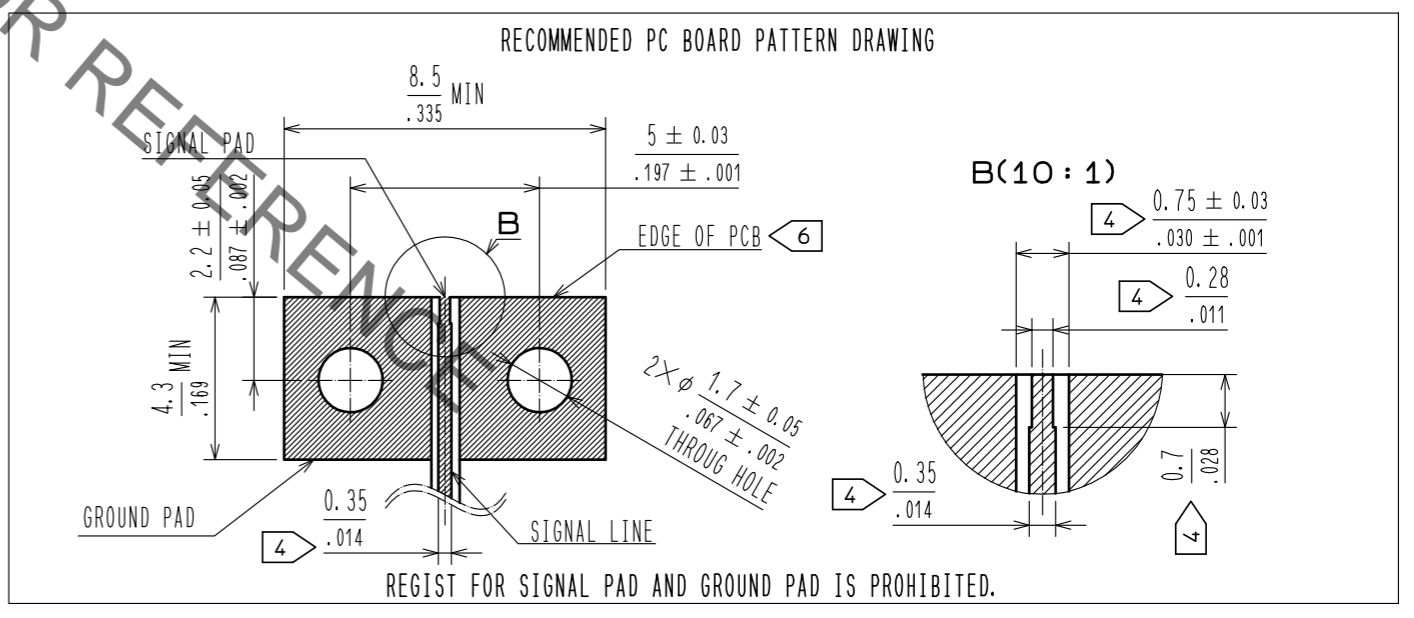
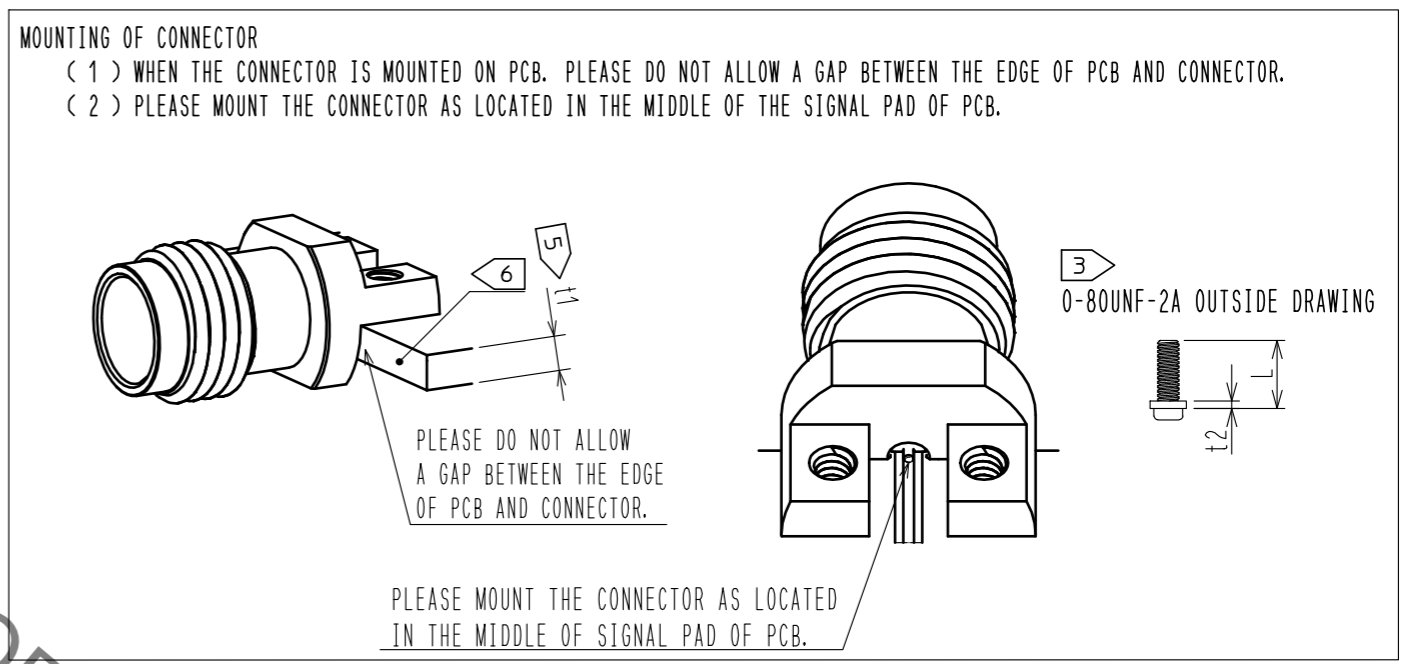


Nov.1.2022 Copyright 2022 HIROSE ELECTRIC CO., LTD. All Rights Reserved.  
In case of consideration for using Automotive equipment / device which demand high reliability, kindly contact our sales window correspondents.



- NOTES
- 1 WHEN MATING THE CONNECTOR, PLEASE HOLD MILLING AREA OF  $6.4 \pm 0.2$  [mm] WITH A SPANNER NOT TO PLACE STRESS ON PCB BY THE TORQUE.
  - 2 0-80UNF-2B SCREW TIGHTENING TORQUE IS  $0.09 \text{ N} \cdot \text{m}$ . PLEASE TIGHTEN THE SCREWS EVENLY WHEN MOUNTING THE CONNECTORS TO ENSURE STABLE ELECTRICAL CONTACT.
  - 3 PLEASE USE A PCB MOUNTING SCREW OF THE LENGTH OF L [mm/in]. THE LENGTH OF L [mm/in] IS PCB THICKNESS  $t_1$  + SPRING WASHER THICKNESS  $t_2$  +  $1.8 \text{ mm} / 0.071 \text{ in}$ . PLEASE USE A SCREW WITH SPRING WASHER.
  - 4 THE INDICATED DIMENSION IS THE CASE OF WHICH DIELECTRIC CONSTANT OF SUBSTRATE IS 3.6 AND THICKNESS IS  $t = 0.2 \text{ mm} / 0.008 \text{ in}$ . LAND PATTERN LAYOUT DEPENDS ALSO ON ELECTRIC CONSTANT, THICKNESS AND LAYER CONSTRUCTION OF PCB. FOR BETTER RF PERFORMANCE, SIMULATION OF PCB WITH CONNECTOR IS RECOMMENDED.
  - 5 RECOMMENDED PCB THICKNESS  $t_1$  IS GREATER THAN  $1.0 \text{ mm} / 0.04 \text{ in}$ .
  - 6 SIDE PLATING OF THE BOARD IS RECOMMENDED.
  7. THIS CONNECTOR SHOULD BE USE FOR TEST PORT ONLY.



3	BERYLLIUM COPPER	GOLD PLATING	7	STAINLESS STEEL	SPRING WASHER
2	STAINLESS STEEL	PASSIVATE	6	STELL	0-80UNF-2A SCREW
1	BRASS	GOLD PLATING	5	POLYETHER IMIDE	
			4	POLYETHER IMIDE	
NO.	MATERIAL	FINISH . REMARKS	NO.	MATERIAL	FINISH . REMARKS
UNITS [mm/in]		SCALE 5 : 1	COUNT		DESCRIPTION OF REVISIONS
DESIGNED		DESIGNED	DESIGNED	DESIGNED	DATE
CHECKED		CHECKED	CHECKED	CHECKED	DATE
DRAWN		DRAWN	DRAWN	DRAWN	DATE
APPROVED : TS. NOBE 20191008			DRAWING NO. EDC-384075-11-00		
CHECKED : NK. NINOMIYA 20191008			PART NO. HV-LR-SR2(11)		
DESIGNED : AH. MARUYAMA 20191008			CODE NO. CL338-0018-0-11		
DRAWN : AH. MARUYAMA 20191008					