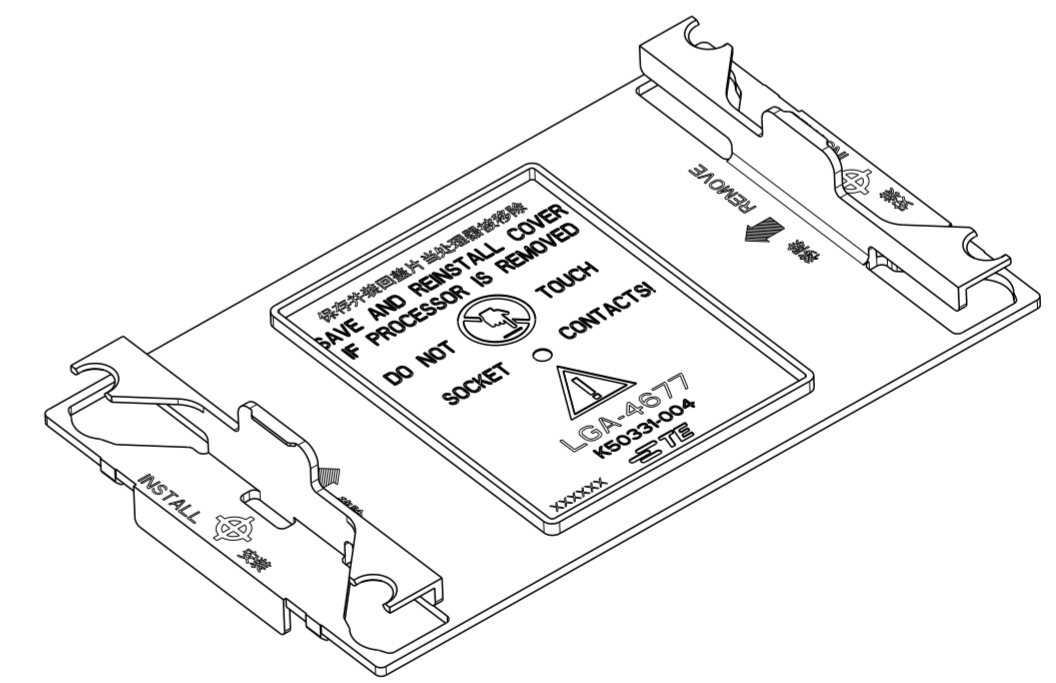
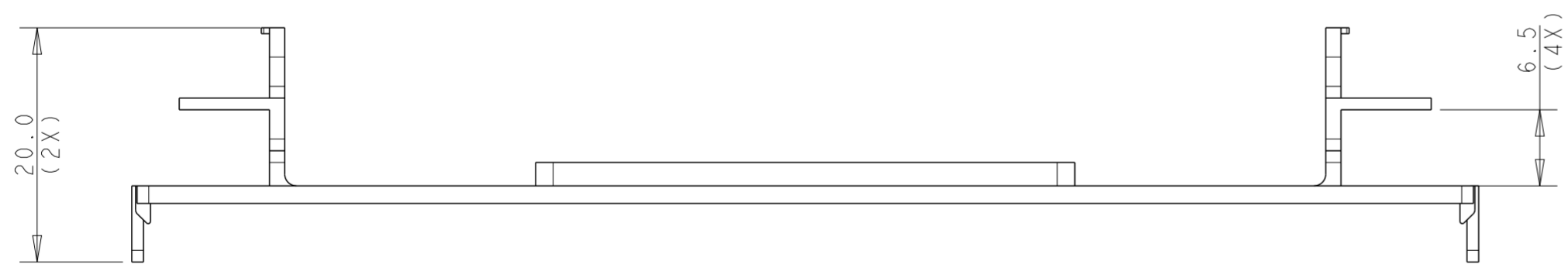
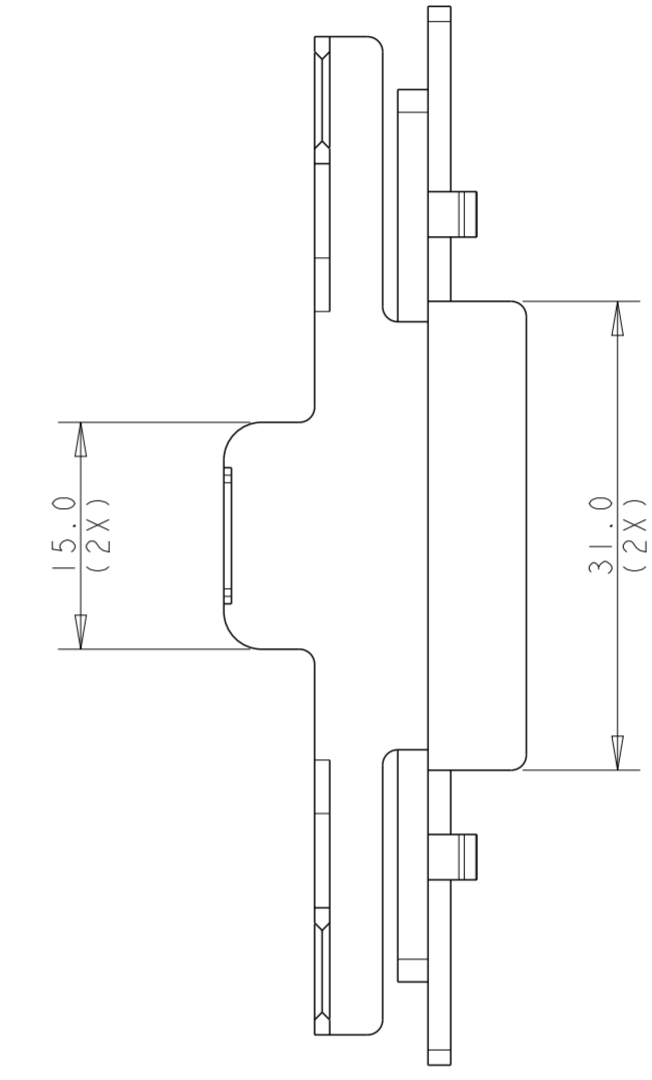
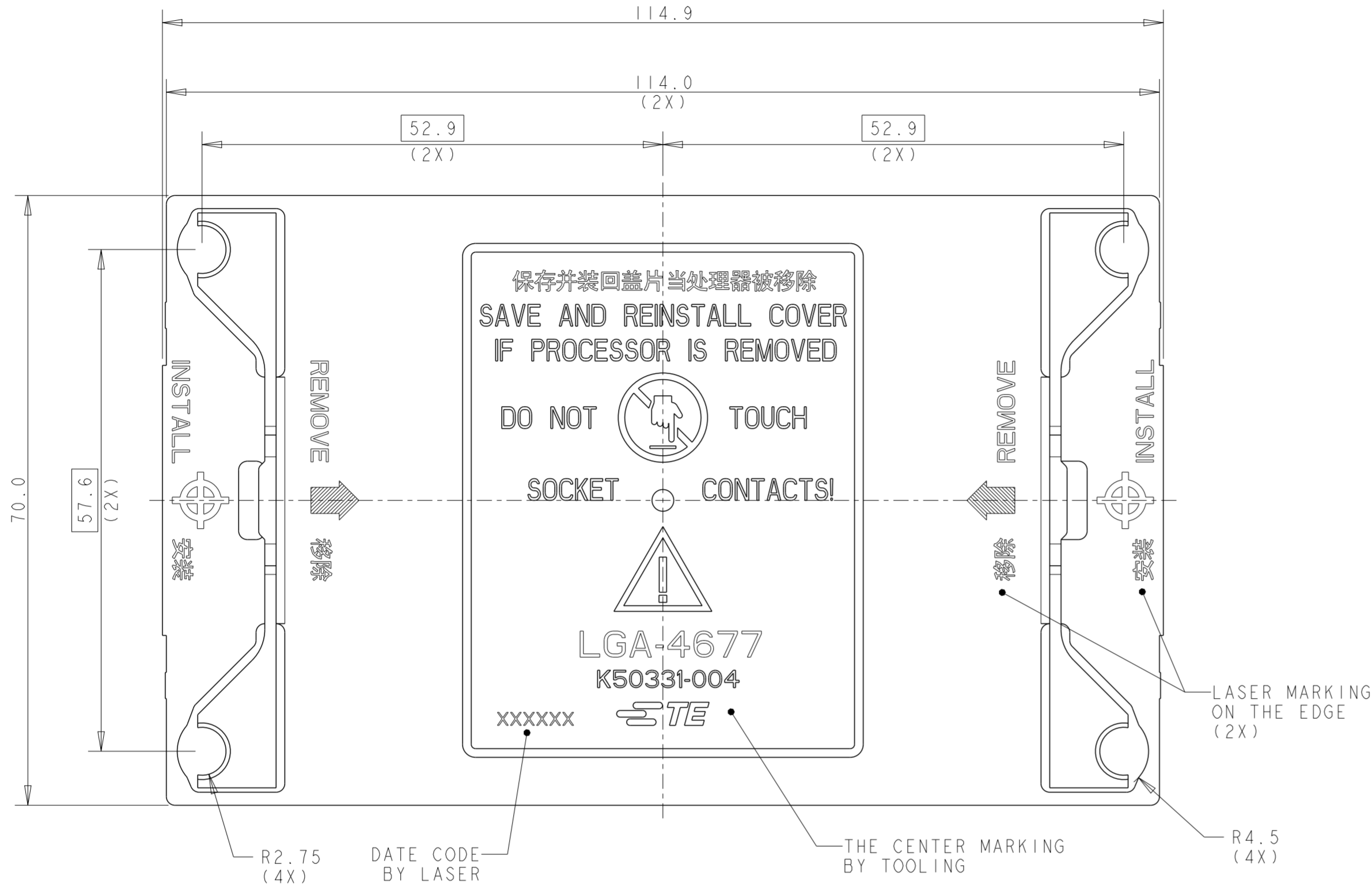


THIS DRAWING IS UNPUBLISHED. RELEASED FOR PUBLICATION
 © COPYRIGHT - BY - ALL RIGHTS RESERVED.

REVISIONS					
P	LTR	DESCRIPTION	DATE	DWN	APVD
	A	RELEASED	15SEP22	J.W	S.L

P/N: 1-2351053-2 AS SHOW



SCALE 1:1

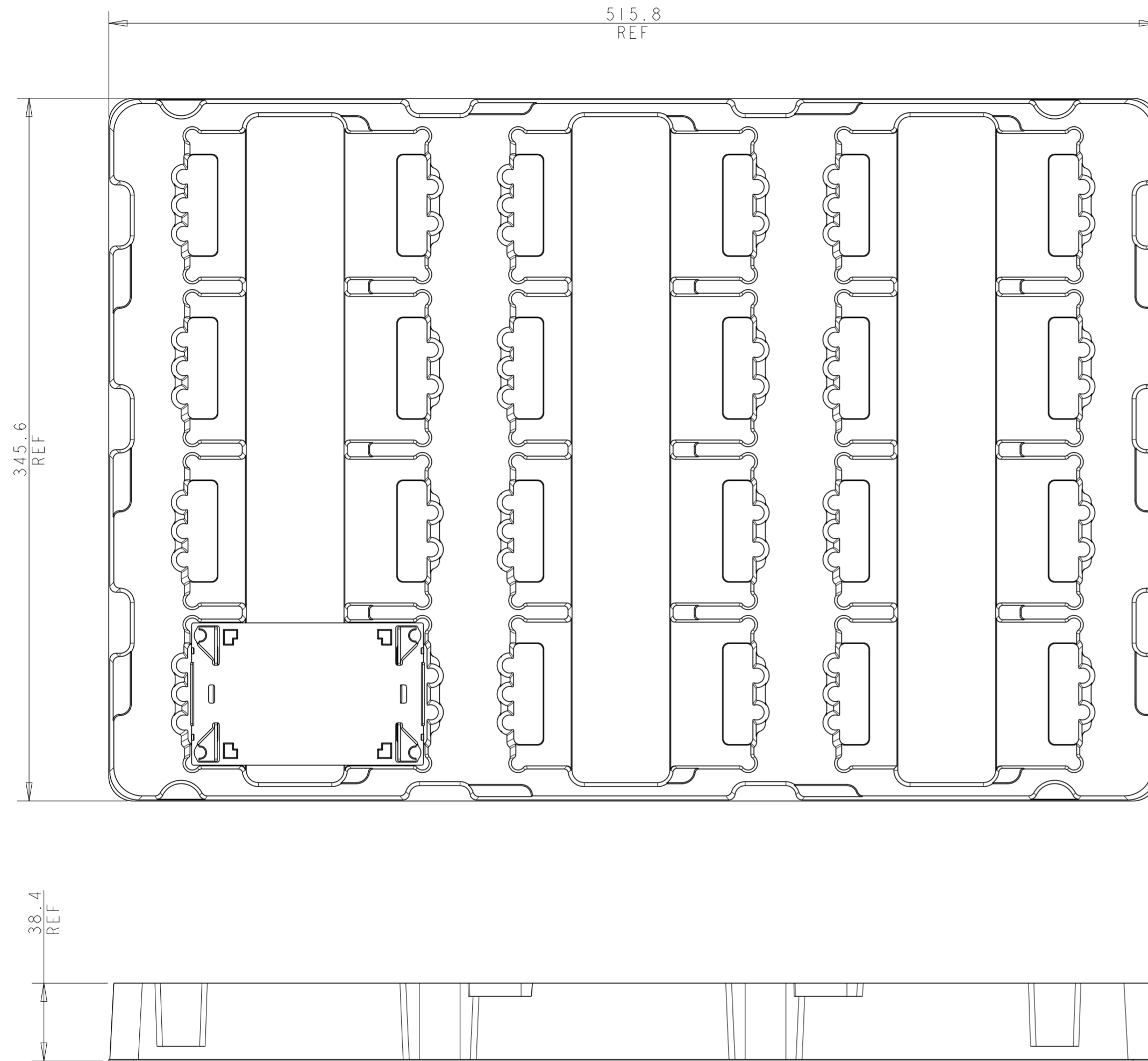
NOTE:
 1. MATERIAL:
 -TYPE: PC-ABS
 -COLOR: BLACK
 -UL94V-0
 2. THIS PRODUCT IS APPLICABLE FOR SOCKET E1 BOLSTER.

THIS DRAWING IS A CONTROLLED DOCUMENT.		DWN: JEFF WANG 04DEC2019	TE Connectivity		
DIMENSIONS: mm		CHK: BILL LV 04DEC2019			
TOLERANCES UNLESS OTHERWISE SPECIFIED:		APVD: SIMON LI 04DEC2019	NAME: SOCKET E1		
0 PLC ±0.3		PRODUCT SPEC	E1 SOCKET COVER		
1 PLC ±0.3		APPLICATION SPEC	SIZE: A2	CAGE CODE: -	DRAWING NO: C-2351053
2 PLC ±0.3		WEIGHT	RESTRICTED TO: -		
3 PLC ±		CUSTOMER DRAWING	SCALE: 2:1	SHEET: 1 OF 2	REV: A
4 PLC ±					
ANGLES ±3					
FINISH					


THIS DRAWING IS UNPUBLISHED. RELEASED FOR PUBLICATION
 © COPYRIGHT - BY - ALL RIGHTS RESERVED.

REVISIONS				
P	LTR	DESCRIPTION	DATE	APVD

P/N 1-2351053-2 PACKING AS SHOW



NOTE: PN 1-2351053-2, 24PCS/TRAY, 240PCS/BOX

THIS DRAWING IS A CONTROLLED DOCUMENT.		DWN JEFF WANG 04DEC2019	 TE Connectivity	
DIMENSIONS: mm		CHK BILL LV 04DEC2019		
TOLERANCES UNLESS OTHERWISE SPECIFIED:		APVD SIMON LI 04DEC2019	NAME SOCKET EI	
0 PLC ±0.3 1 PLC ±0.3 2 PLC ±0.3 3 PLC ± 4 PLC ± ANGLES ±3 FINISH		PRODUCT SPEC -	EI SOCKET COVER	
MATERIAL		APPLICATION SPEC -	SIZE A2	CAGE CODE -
-		WEIGHT -	DRAWING NO C-2351053	RESTRICTED TO -
-		CUSTOMER DRAWING	SCALE 2:1	SHEET 2 OF 2
-				REV A