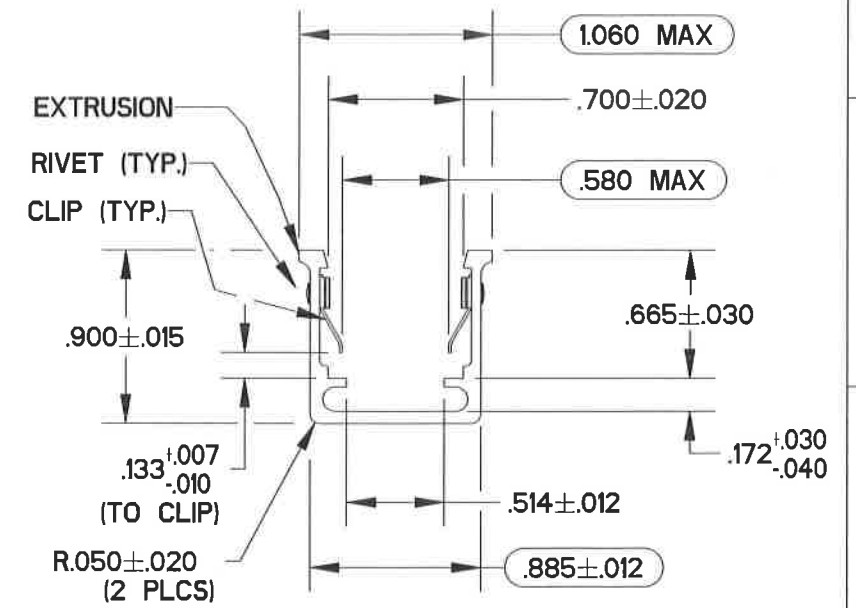
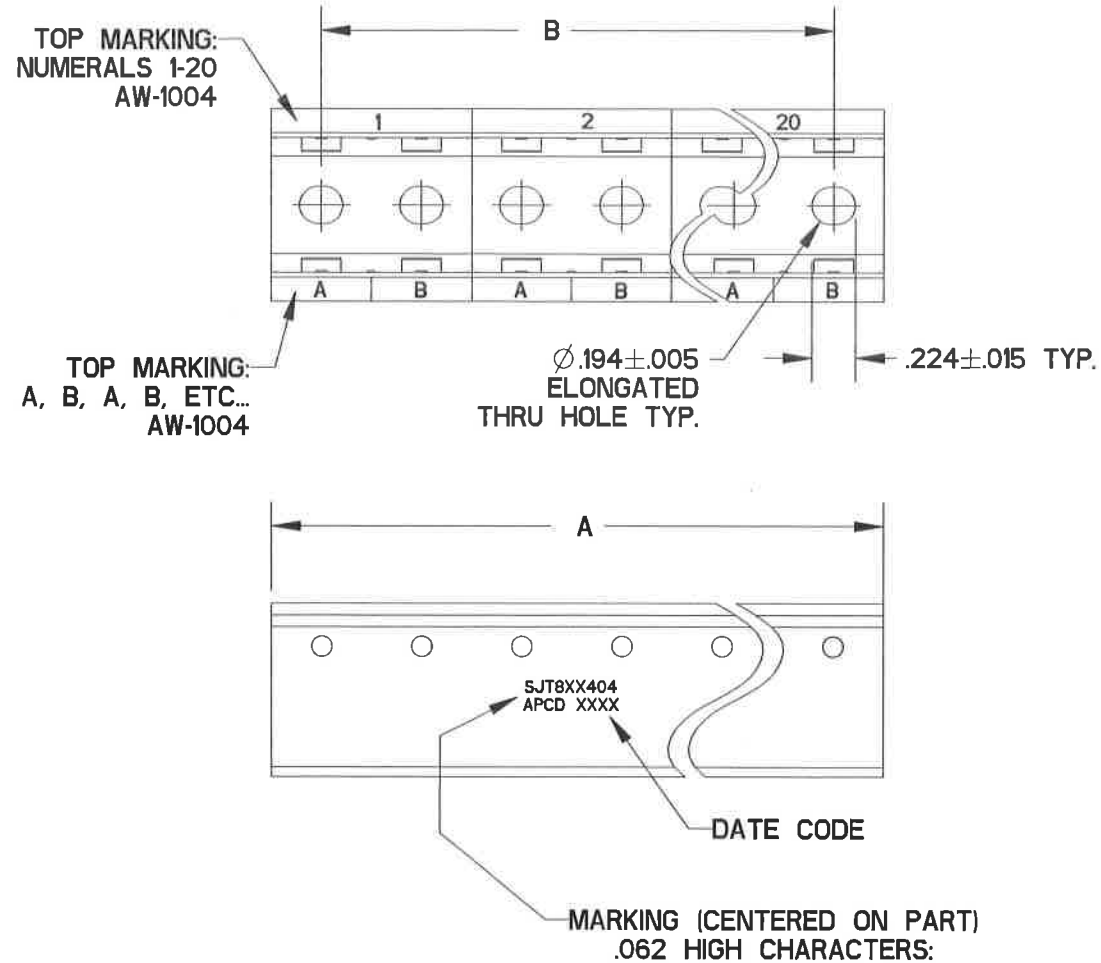


SJT802404

REV	ECN	APP'D
-	9637	MS 27 MAY 2022

APCD PART NO.	QUANTITY OF MODULES PER RAIL (SIZES 16, 20 & 22)	A ± .015	B ± .015
SJT802404	2	1.036	.518
SJT803404	3	1.554	1.036
SJT804404	4	2.072	1.554
SJT805404	5	2.590	2.072
SJT806404	6	3.108	2.590
SJT807404	7	3.626	3.108
SJT808404	8	4.144	3.626
SJT809404	9	4.662	4.144
SJT810404	10	5.180	4.662
SJT812404	12	6.216	5.698
SJT813404	13	6.734	6.216
SJT814404	14	7.252	6.734
SJT815404	15	7.770	7.252
SJT816404	16	8.288	7.770
SJT818404	18	9.324	8.806
SJT819404	19	9.842	9.324
SJT820404	20	10.360	9.842
SJT821404	21	10.875	10.360
SJT825404	25	12.950	12.432
SJT830404	30	15.540	15.022
SJT832404	32	16.576	16.058
SJT840404	40	20.720	20.202



- NOTES:
- PART SHALL MEET ALL REQUIREMENTS OF AS81714/67.
 - MATERIALS:
 - EXTRUSION - ALLUMINUM ALLOY 6061-T4, BLACK ANODIZED IN ACCORDANCE WITH MIL-A-8625.
 - CLIP - CORROSION RESISTANT STEEL IN ACCORDANCE WITH MIL-S-25043.
 - RIVET - CORROSION RESISTANT STEEL IN ACCORDANCE WITH QQ-S-766.
 - MARKINGS ARE FLUSH WITH SURFACES; COLOR - WHITE.
 - RACKS ACCEPT BLOCKS (MODULES) PER AS81714 SERIES II; APCD SJ SERIES.
 - QUANTITY OF SIZE 12 BLOCKS PER RACK IS HALF THE QUANTITY OF SIZE 16, 20 & 22 BLOCKS (SEE TABLE).
 - BLOCK REMOVAL TOOLS (REQUIRED TO REMOVE BLOCKS FROM RACK - SUPPLIED SEPARATELY).
 - SIZES 16, 20 & 22 - MILITARY P/N M81714/69-01; APCD P/N CNA051300.
 - SIZE 12 - MILITARY P/N M81714/69-02; APCD P/N CNA052300.

APPLIES TO ALL APCD P/N SJT8XX404

DIMENSIONS ANSI Y14.5M UNITS: INCHES Pro/E FILE	TOLERANCES .XX ±0.01 .XXX ±0.005 ANGLES ±2.0°	PROJECTION 	Amphenol Pcd CUSTOMER DRAWING		TITLE SOCKET JUNCTION TRACK	
			ENGR P. CAHALY Jun-30-16		SIZE B	CUSTOMER DWG NO. SJT802404
ORIGINAL	THIS DOCUMENT CONTAINS PROPRIETARY INFORMATION WHICH IS THE CONFIDENTIAL PROPERTY OF AMPHENOL PCD INC. BEVERLY, MA, USA		CHKD <i>[Signature]</i> 5/3/22	APPD <i>[Signature]</i> 27 MAY 2022	CODE: 58982	SHEET 1 OF 1