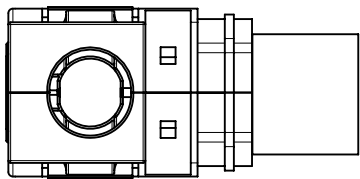
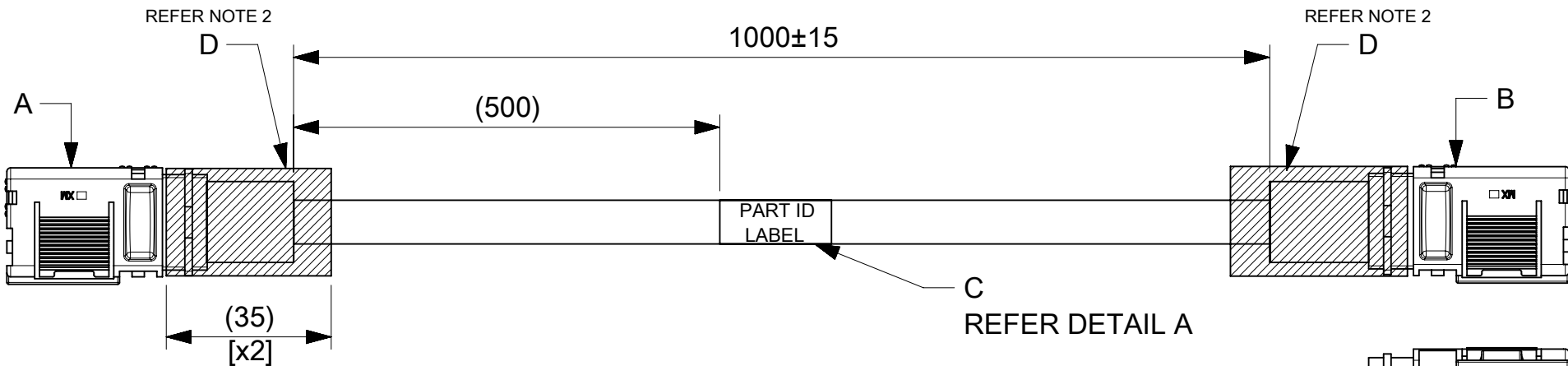


ITEM #	MOLEX PART#	DESCRIPTION	QTY	UOM
A,B	2178841000	6mm SIDEWIZE ASSY 2 AWG RECEPTACLE BLK	2	PC
C	-	PART ID LABEL	1	PC
D	-	HST	A/R	M

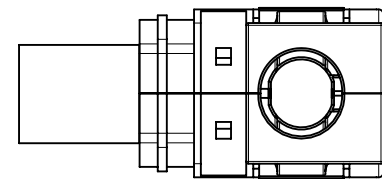
FROM	TO	CABLE PART#	DESCRIPTION	COLOR
A	B	-	1X2AWG PVC UL1015 BLACK	BLACK



NOTE 4



REFER NOTE 3



DETAIL A

2243561116
MOLEX
BATCH WK/YR

- NOTE:
- CABLE ASSEMBLY TO BE ENSURED FOR CONTINUITY.
 - INSTALL HST ON THE BARREL AS SHOWN IN DRAWING.
 - ENSURE LATCH AND THE CRIMPING PROFILE ARE IN THE SAME PLANE
 - HST TO BE COVERED FROM THE WIRE INSULATION TO OVER THE RIB, TO ENSURE THERE IS NO EXPOSURE OF BARE MATERIAL

FUNCTIONAL SYMBOLS	THIS DRAWING CONTAINS INFORMATION THAT IS PROPRIETARY TO MOLEX ELECTRONIC TECHNOLOGIES, LLC AND SHOULD NOT BE USED WITHOUT WRITTEN PERMISSION							
	DIMENSION UNITS	SCALE				CURRENT REV DESC:		
$\frac{F}{A} = 0$	mm	NTS	EC NO: 761416					
$\frac{F}{E} = 0$	GENERAL TOLERANCES (UNLESS SPECIFIED)		DRWN: ROHITJ3 2023/08/21					
$\frac{F}{P} = 0$	ANGULAR TOL ± °		2023/09/07					
DIVISIONAL SYMBOLS	4 PLACES	±	CHK'D: SKUMAR07 2023/09/07					
	3 PLACES	±	APPR: SKUMAR07 2023/09/07					
	2 PLACES	±	INITIAL REVISION:					
	1 PLACE	±	DRWN: MARUTG 2023/04/25					
	0 PLACES	±	APPR: SKUMAR07 2023/04/27					
DRAFT WHERE APPLICABLE MUST REMAIN WITHIN DIMENSIONS		THIRD ANGLE PROJECTION	DRAWING	SERIES	DOCUMENT NUMBER	DOC TYPE	DOC PART	REVISION
			A4-SIZE	224356	2243561116	PSD	000	D
DOCUMENT STATUS		P1	RELEASE DATE	2023/09/07	06:24:52	SHEET NUMBER		
						1 OF 1		