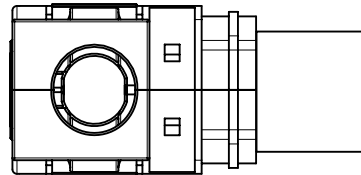
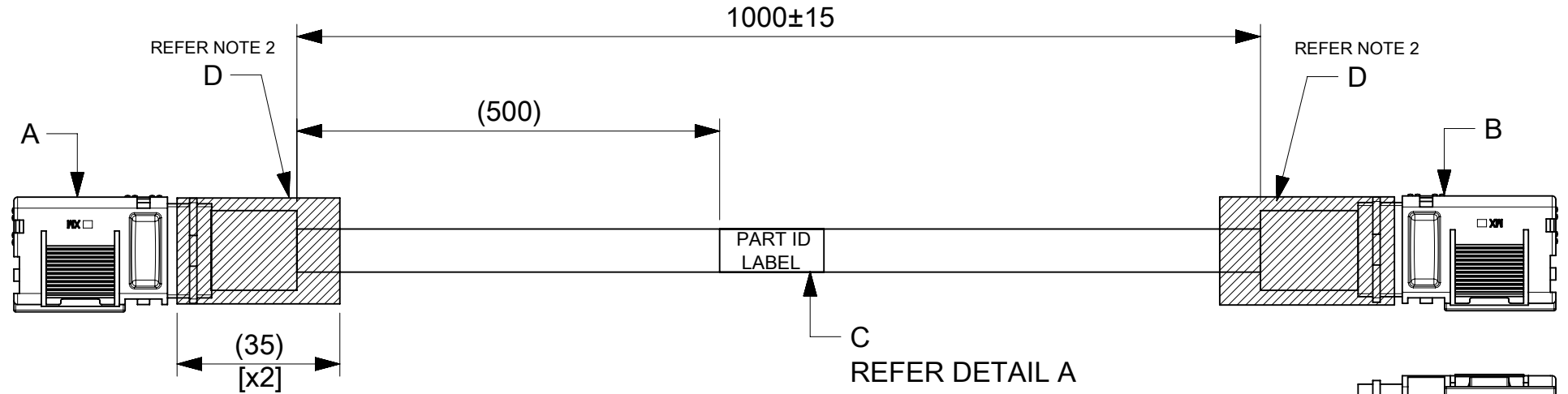


ITEM #	MOLEX PART#	DESCRIPTION	QTY	UOM
A,B	2178841001	6mm SIDEWIZE ASSY 2 AWG RECEPTACLE RED	2	PC
C	-	PART ID LABEL	1	PC
D	-	HST	A/R	M

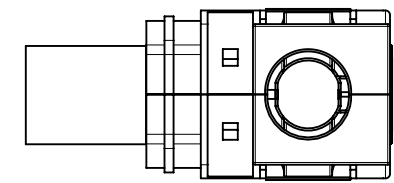
FROM	TO	CABLE PART#	DESCRIPTION	COLOR
A	B	-	1X2AWG PVC UL1015 RED	RED



REFER NOTE 4



REFER NOTE 3



DETAIL A

2243561216
MOLEX
BATCH WK/YR

- NOTE:
1. CABLE ASSEMBLY TO BE ENSURED FOR CONTINUITY.
 2. INSTALL HST ON THE BARREL AS SHOWN IN DRAWING.
 3. ENSURE LATCH AND THE CRIMPING PROFILE ARE IN THE SAME PLANE
 4. HST TO BE COVERED FROM THE WIRE INSULATION TO OVER THE RIB, TO ENSURE THERE IS NO EXPOSURE OF BARE MATERIAL

FUNCTIONAL SYMBOLS FA = 0 FE = 0 FP = 0 DIVISIONAL SYMBOLS	THIS DRAWING CONTAINS INFORMATION THAT IS PROPRIETARY TO MOLEX ELECTRONIC TECHNOLOGIES, LLC AND SHOULD NOT BE USED WITHOUT WRITTEN PERMISSION		CURRENT REV DESC:		 SW1 6.00MM R-R 1M 2AWG RD PRODUCT CUSTOMER DRAWING
	DIMENSION UNITS	SCALE	EC NO: 761416		
	mm	NTS	DRWN: ROHITJ3	2023/08/21	
	GENERAL TOLERANCES (UNLESS SPECIFIED)		CHK'D: SKUMAR07	2023/09/07	
ANGULAR TOL ± °		APPR: SKUMAR07	2023/09/07	DOCUMENT NUMBER	
4 PLACES	±	INITIAL REVISION:		2243561216	DOC TYPE
3 PLACES	±	DRWN: MARUTG	2023/04/25	PSD	DOC PART
2 PLACES	±	APPR: SKUMAR07	2023/04/27	000	REVISION
1 PLACE	±	DRAFT WHERE APPLICABLE MUST REMAIN WITHIN DIMENSIONS		D	
0 PLACES	±	THIRD ANGLE PROJECTION	DRAWING	SERIES	MATERIAL NUMBER
			A4-SIZE	224356	2243561216
					CUSTOMER
					GENERAL MARKET
					SHEET NUMBER
					1 OF 1

DOCUMENT STATUS	P1	RELEASE DATE	2023/09/07	06:24:52
-----------------	----	--------------	------------	----------