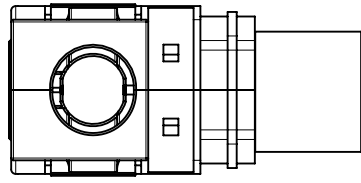
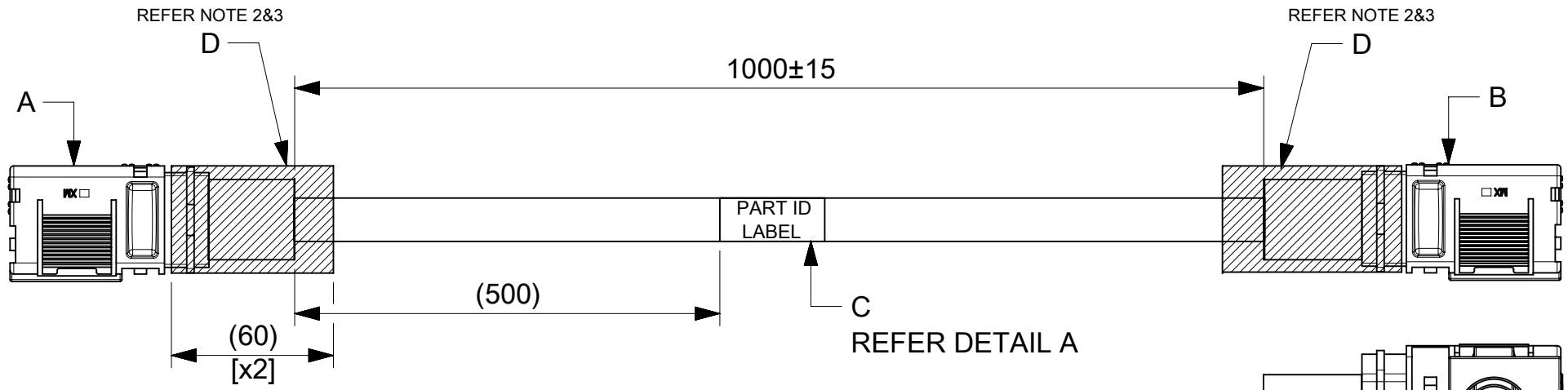


ITEM #	MOLEX PART#	DESCRIPTION	QTY	UOM
A,B	2182311000	11mm SIDEWIZE ASSY 4/0 AWG RECEPT BLK	2	PC
C	-	PART ID LABEL	1	PC
D	-	HST	A/R	M

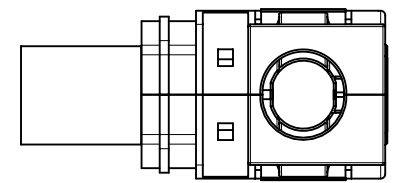
FROM	TO	CABLE PART#	DESCRIPTION	COLOR
A	B	-	1X4/0 AWG DISC PVC BK UL1015	BLACK



REFER NOTE 4



REFER NOTE 3



DETAIL A

2244151116
MOLEX
BATCH WK/YR

- NOTE:
1. CABLE ASSEMBLY TO BE ENSURED FOR CONTINUITY.
 2. INSTALL HST ON THE BARREL AS SHOWN IN DRAWING.
 3. ENSURE LATCH AND THE CRIMPING PROFILE ARE IN THE SAME PLANE.
 4. HST TO BE COVERED FROM THE WIRE INSULATION TO OVER THE RIB, TO ENSURE THERE IS NO EXPOSURE OF BARE MATERIAL.

FUNCTIONAL SYMBOLS $\nabla_A = 0$ $\nabla_E = 0$ $\nabla_P = 0$	THIS DRAWING CONTAINS INFORMATION THAT IS PROPRIETARY TO MOLEX ELECTRONIC TECHNOLOGIES, LLC AND SHOULD NOT BE USED WITHOUT WRITTEN PERMISSION		molex SW1 11.00MM R-R 1M 4/0AWG BK		
	DIMENSION UNITS	SCALE			
	mm	NTS	EC NO: 759423		
	GENERAL TOLERANCES (UNLESS SPECIFIED)		DRWN: NAVEEB6 2023/08/10		
ANGULAR TOL ± °		CHK'D: SKUMAR07 2023/08/21			
4 PLACES ±		APPR: SKUMAR07 2023/08/21			
3 PLACES ±		INITIAL REVISION:			
2 PLACES ±		DRWN: MARUTG 2023/04/26			
1 PLACE ±		APPR: SKUMAR07 2023/04/27			
0 PLACES ±		DOCUMENT NUMBER			
DRAFT WHERE APPLICABLE MUST REMAIN WITHIN DIMENSIONS		THIRD ANGLE PROJECTION	DRAWING	SERIES	MATERIAL NUMBER
			A4-SIZE	224415	2244151116
		CUSTOMER		DOC TYPE	DOC PART
		GENERAL MARKET		PSD	000
		SHEET NUMBER		REVISION	
		1 OF 1		C	

DOCUMENT STATUS	P1	RELEASE DATE	2023/08/21	05:53:17
-----------------	----	--------------	------------	----------