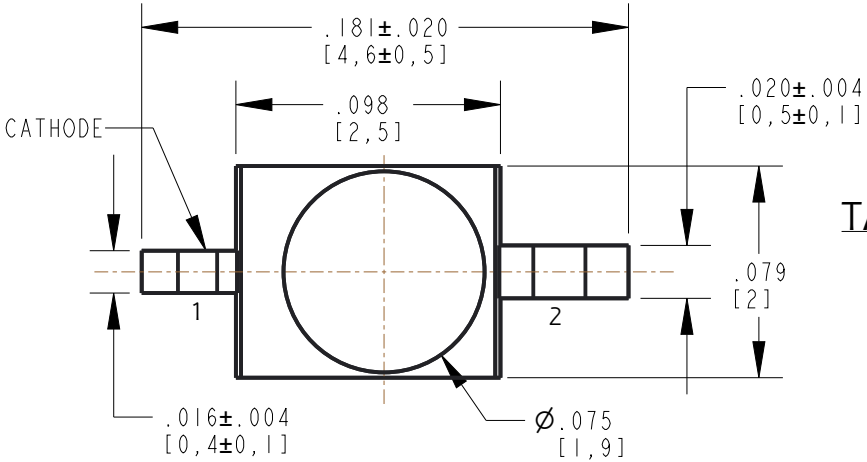


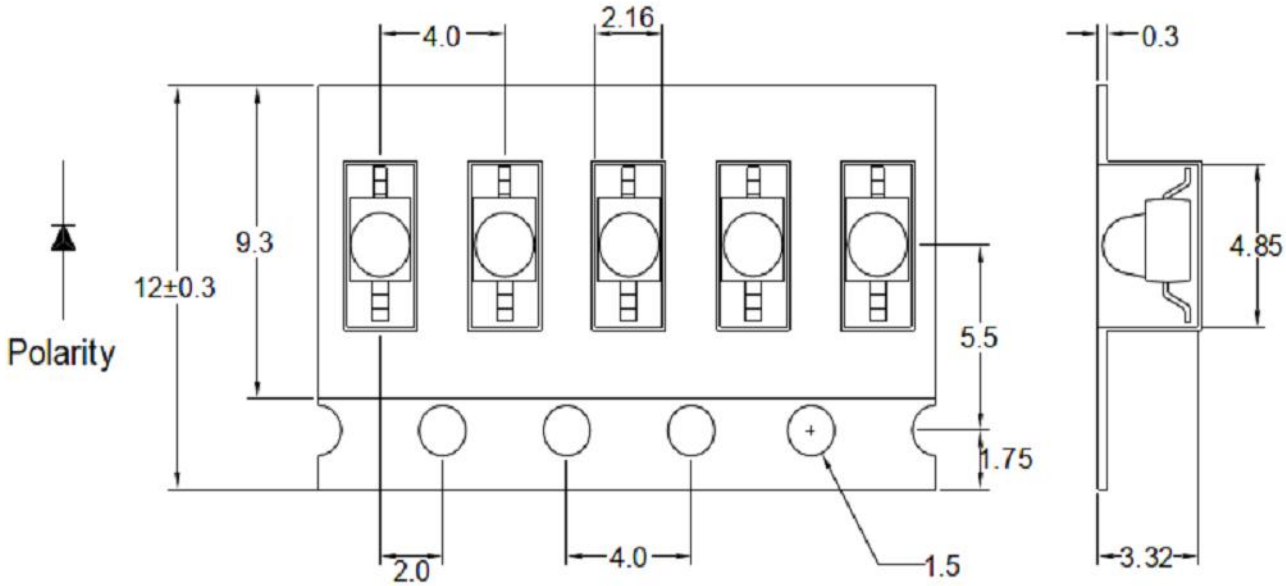
DIALIGHT PART NO.	LED COLOR	LENS COLOR
521-8750F	SUPER RED	WATER CLEAR

- NOTES:
- PARTS ARE TO BE SUPPLIED IN 12mm CARRIER TAPE ON 7" REEL
1500 PCS PER REEL.
 - PIN NUMBERS ARE FOR REFERENCE ONLY, DESIGNATION NON-EXISTENT ON PART.
 - THIS ASSEMBLY CONTAINS ELECTROSTATIC DISCHARGE SENSITIVE DEVICES (ESDS). MAINTAIN ALL PRECAUTIONARY MEASURES DURING ASSEMBLY, HANDLING AND STORAGE IN ACCORDANCE WITH IPC-A-610.
 - THIS PRODUCT IS RoHS COMPLIANT. EACH BAG IS TO BE MARKED WITH RoHS COMPLIANT LABEL OR EQUIVALENT MARKINGS. LED MUST BE Pb FREE.
 - MOISTURE SENSITIVITY LEVEL IS 2.

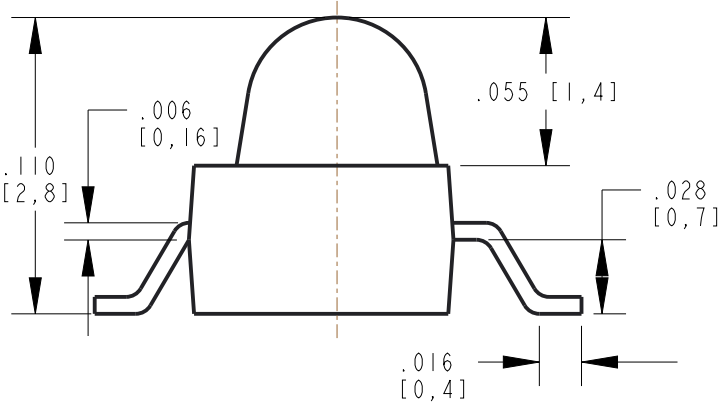
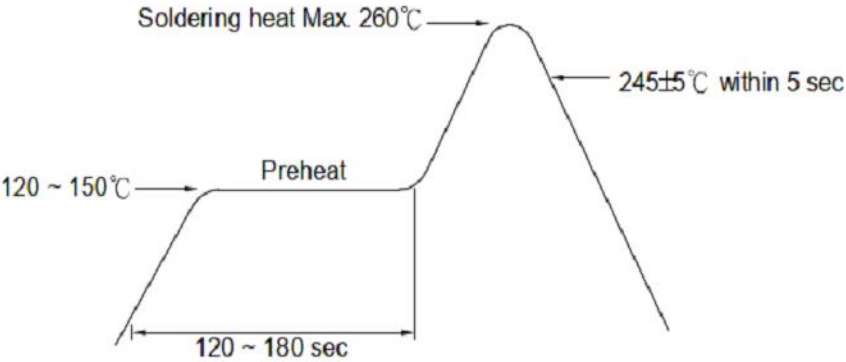
REV	ECN NO	REVISIONS	DRN	CKD	APP	QA	CM	DATE
A	122403	NEW RELEASE	LD	CS	SD	DS	JN	9-16-24



TAPE DIMENSION (mm)



RECOMMENDED WAVE SOLDER PROFILE

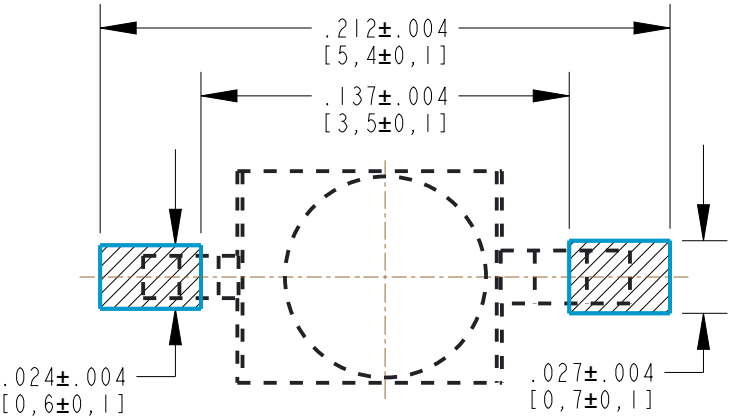
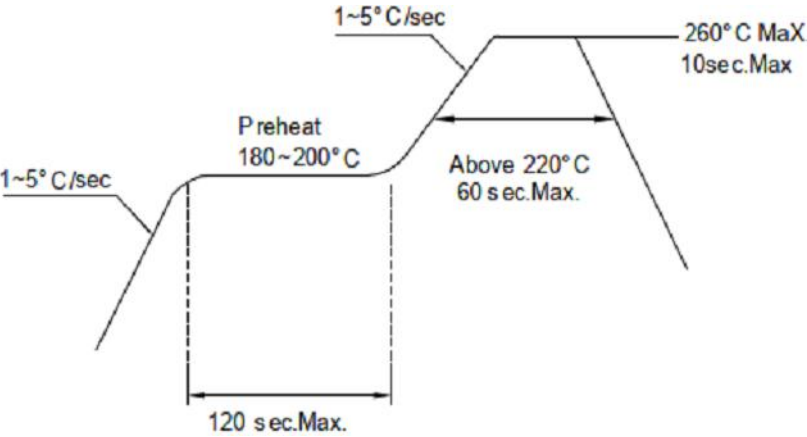


LED SCHEMATIC

ABSOLUTE MAXIMUM RATINGS AT 25°C							
LED COLOR	POWER DISSIPATON (mW)	FORWARD CURRENT (mA)	PEAK FORWARD CURRENT *(mA)	REVERSE VOLTAGE (V)	ELECTROSTATIC DISCHARGE (V)	OPERATING TEMPRATURE (°C)	STORAGE TEMPRATURE (°C)
SUPER RED	120	50	100	5	2000	-40 TO +85	-40 TO +100

*PEAK FORWARD CURRENT : DUTY 1/10@10KHz

RECOMMENDED PB-FREE REFLOW SOLDER PROFILE



RECOMMENDED PAD LAYOUT

ELECTRICAL OPTICAL CHARACTERISTICS AT 25°C									
LED COLOR	TEST CONDITION	LUMINOUS INTENSITY (mcd)			DOMINANT WAVELENGTH (nm)	SPECTRAL LINE HALF-WIDTH (nm)	FORWARD VOLTAGE (V)		VIEWING ANGLE (DEG)
	I _F (mA)	MIN.	TYP.	MAX	TYP.	TYP	MIN	MAX.	TYP
SUPER RED	20	3400	6200	11500	620	20	1.5	2.4	20



ATTENTION:
OBSERVE PRECAUTIONS FOR
HANDLING ELECTROSTATIC
SENSITIVE DEVICES

THIS DRAWING AND THE CONTENTS HEREIN ARE CONFIDENTIAL AND THE SOLE PROPERTY OF DIALIGHT CORP. REPRODUCTION OF THIS DRAWING OR CONSTRUCTION OF ANY PARTS WITHIN THIS DRAWING ARE FORBIDDEN WITHOUT THE WRITTEN CONSENT OF DIALIGHT CORP.									
DIALIGHT CORP. INTERNAL REFERENCE ONLY = 3D MODEL : 450052187XX30-.1									
SCALE: 14.000		DRAWING NUMBER				REV			
ALL DIM's: INCH (mm)		C-18782				A			
TOLERANCES: UNLESS OTHERWISE SPECIFIED		TITLE				1.9mm GULLWING LED SUPER RED			
FRACTIONS: ±1/64		MATERIAL				—			
DECIMALS (.XX): ±.01		FINISH				—			
DECIMALS (.XXX): ±.005		FSCM				83330			
DECIMALS (.XXX): ±.0005		SHEET				1 OF 1			
ANGLES: ±1°		FAMILY TABLE:							