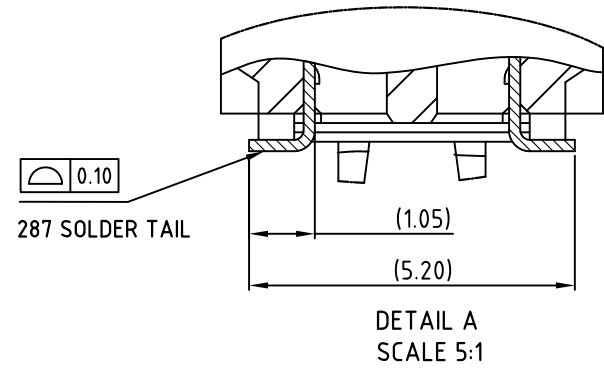
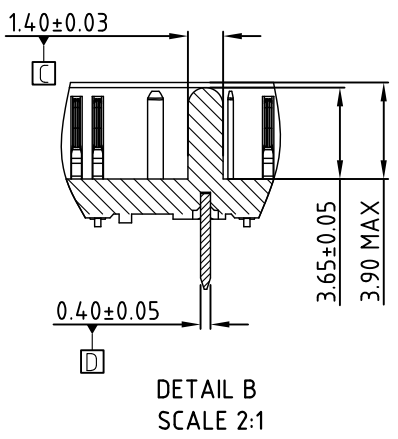
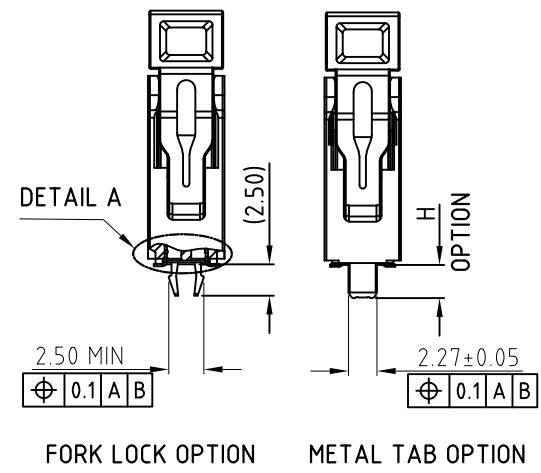
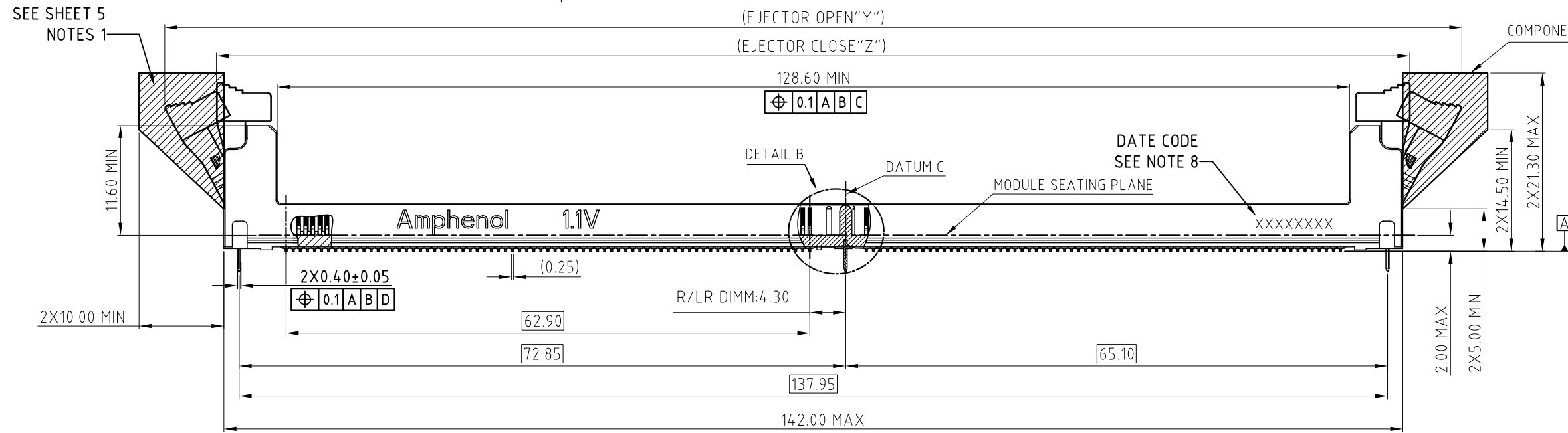
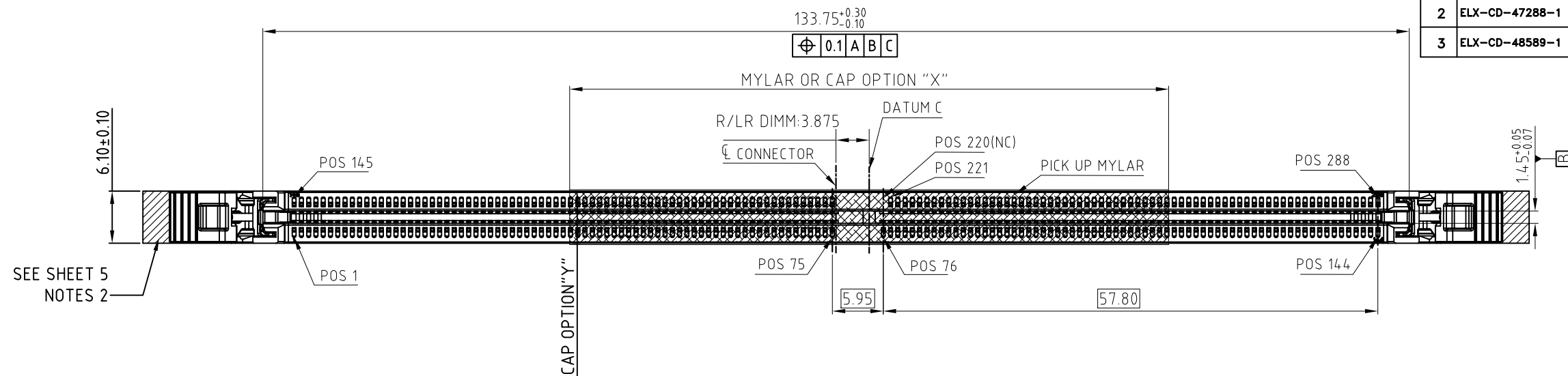


This document is the property of Amphenol Corporation and is delivered on the express condition that it is not to be disclosed, reproduced or used, in whole or in part, for manufacture or sale by anyone other than Amphenol Corporation without its prior consent, & that no right is granted to disclose or to use any information in this document.

CUSTOMER DRAWING

REVISIONS				
SYM	ECN	DESCRIPTION	DATE	APPROVED
1	ELX-CD-F3134-1	FIRST RELEASED	Jan.05,2023	YH
2	ELX-CD-47288-1	CHANGE PIN NUMBER TO POS NUMBER	Feb.28,2023	YH
3	ELX-CD-48589-1	CHANGE 40MM LENGTH MYLAR TO 50MM	Oct.26,2023	YH



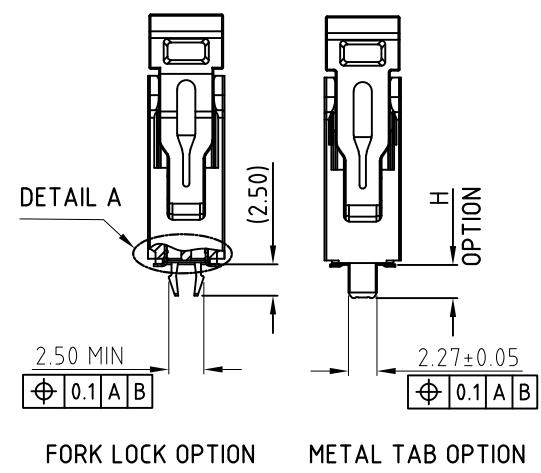
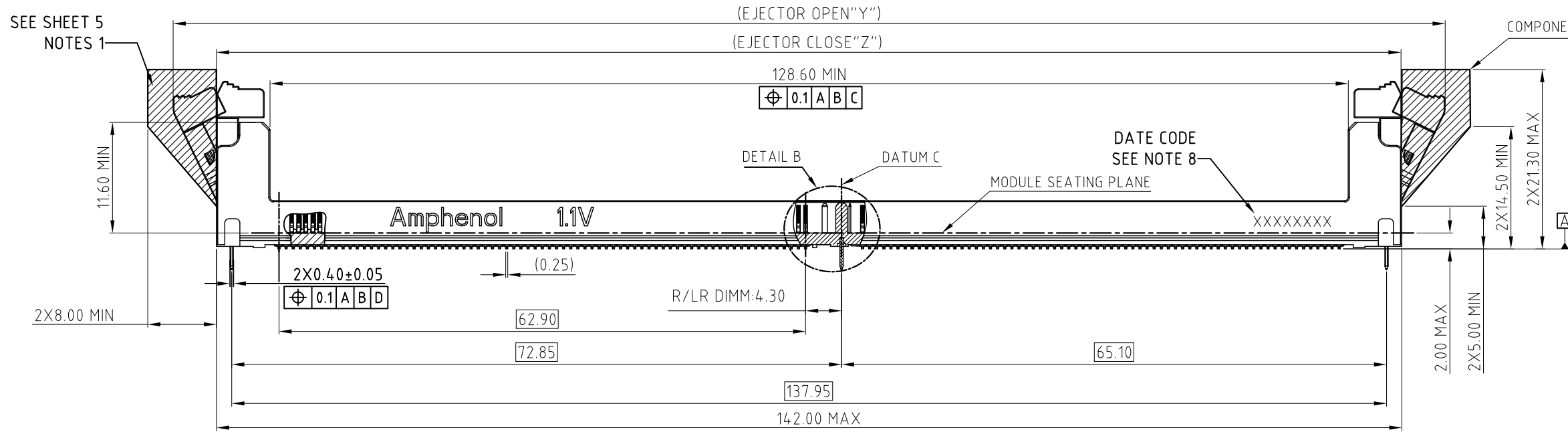
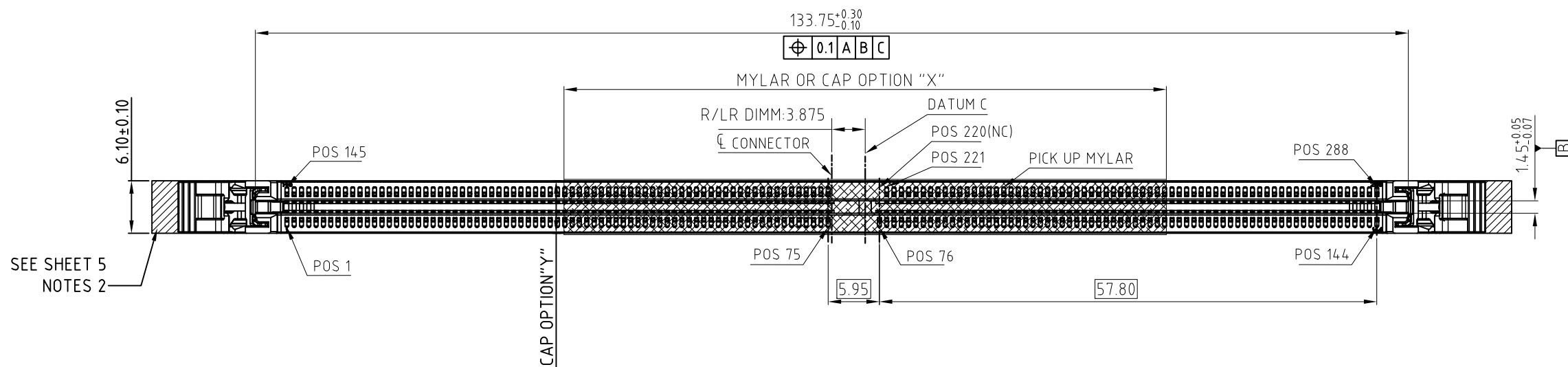
ITEM	EJECTOR OPEN DIMENSION "Y"	EJECTOR CLOSE DIMENSION "Z"	EJECTOR FIGURE
STANDARD LATCH	156.00 MAX	144.00 MAX	

UNLESS OTHERWISE SPECIFIED TOLERANCES		APPROVAL	DATE	Amphenol						
U.S.	METRIC	DRAWN	Kellen Yang		Oct.26.2023					
.X	+/-	CHECKED		TITLE DDR5 287P R/LR DIMM CONNECTOR						
.XX	+/-	CHECKED								
.XXX	+/-			DRAWING FILE : DRAWING\DDR\CDDR514XXXXXXX						
FRACTIONS	+/-									
ANGLES	+/-			ANGLE OF PROJECTION						
FOR MATERIALS AND FINISHES SEE NOTES				<table border="1"> <tr> <td>SIZE</td> <td>DRAWING NO.</td> <td>REV.</td> </tr> <tr> <td>A3</td> <td>C DDR514XXXXXXX</td> <td>3</td> </tr> </table>	SIZE	DRAWING NO.	REV.	A3	C DDR514XXXXXXX	3
SIZE	DRAWING NO.	REV.								
A3	C DDR514XXXXXXX	3								
REMOVE SHARP EDGES				SCALE						
DIMENSIONS				NONE						
U.S.	INCHES			SHEET 1 OF 7						
(METRIC)	(MM)									

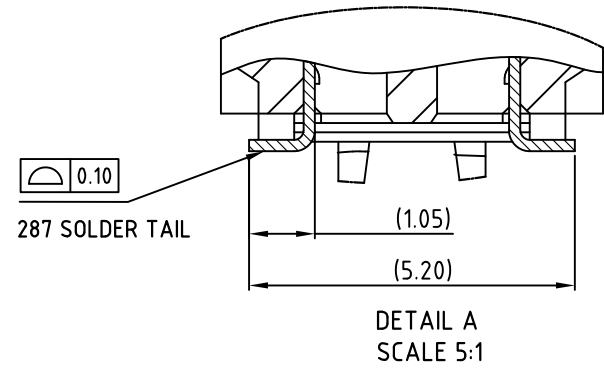
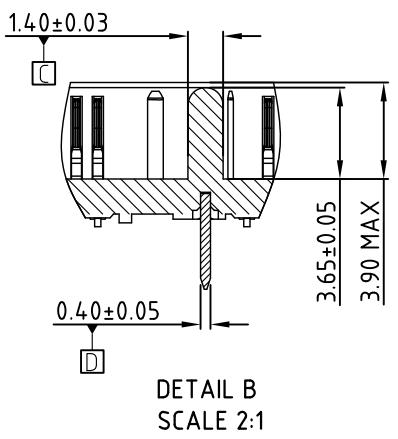
This document is the property of Amphenol Corporation and is delivered on the express condition that it is not to be disclosed, reproduced or used, in whole or in part, for manufacture or sale by anyone other than Amphenol Corporation without its prior consent, & that no right is granted to disclose or to use any information in this document.

CUSTOMER DRAWING

REVISIONS				
SYM	ECN	DESCRIPTION	DATE	APPROVED
		SEE SHEET 1		



ITEM	EJECTOR OPEN DIMENSION "Y"	EJECTOR CLOSE DIMENSION "Z"	EJECTOR FIGURE
SHORT LATCH	152.00 MAX	142.00 MAX	



UNLESS OTHERWISE SPECIFIED TOLERANCES

	U.S.	METRIC
.X +/-		0.35
.XX +/-		0.25
.XXX +/-		0.15
FRACTIONS +/-		
ANGLES +/-		3°

FOR MATERIALS AND FINISHES SEE NOTES

REMOVE SHARP EDGES

DIMENSIONS

U.S.	INCHES
(METRIC)	(MM)

APPROVAL		DATE
DRAWN	Kellen Yang	Oct.26.2023
CHECKED		
CHECKED		

DRAWING FILE :
DRAWING\DDR\CDDR514XXXXXXX

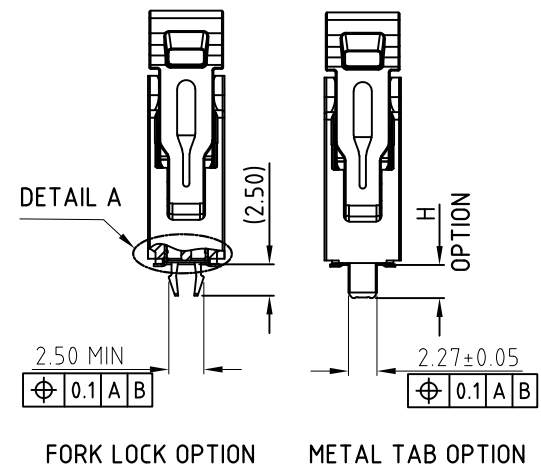
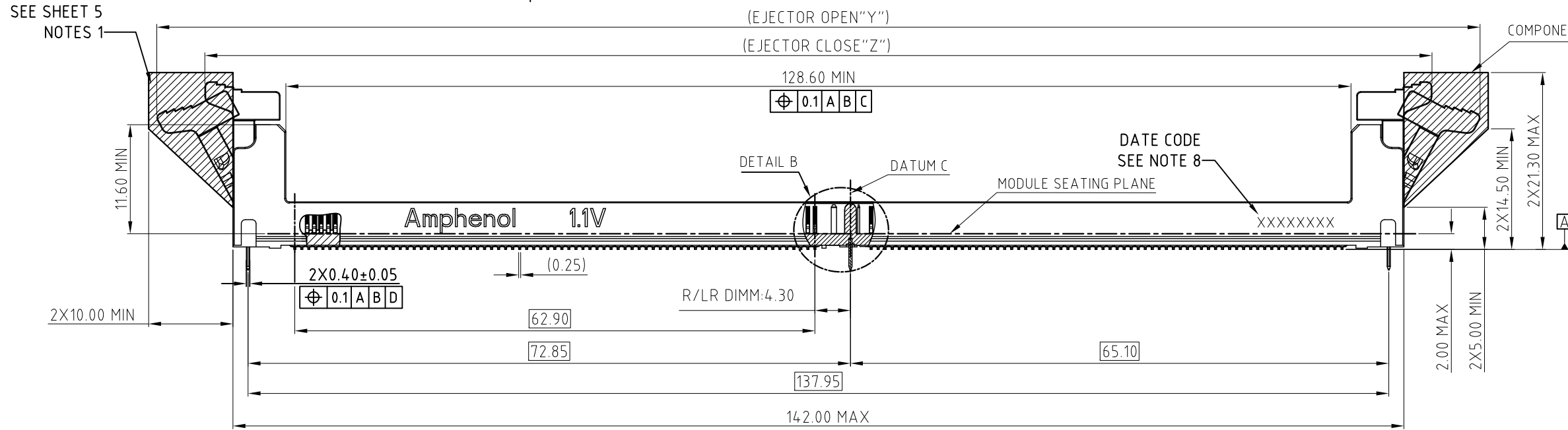
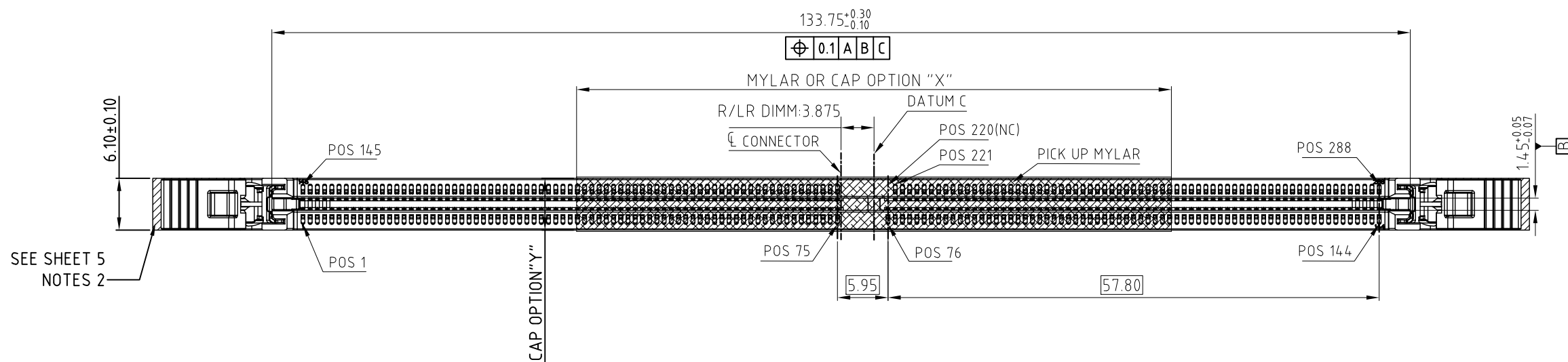
ANGLE OF PROJECTION

Amphenol		
TITLE DDR5 287P R/LR DIMM CONNECTOR		
SIZE	DRAWING NO.	REV.
A3	C DDR514XXXXXXX	3
SCALE	NONE	SHEET 2 OF 7

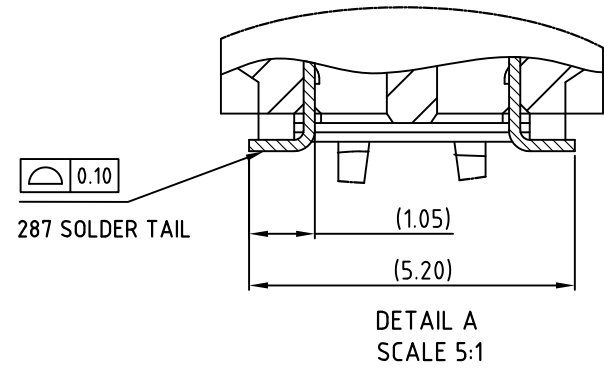
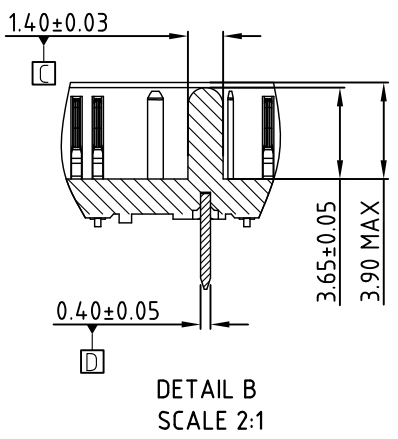
This document is the property of Amphenol Corporation and is delivered on the express condition that it is not to be disclosed, reproduced or used, in whole or in part, for manufacture or sale by anyone other than Amphenol Corporation without its prior consent, & that no right is granted to disclose or to use any information in this document.

CUSTOMER DRAWING

REVISIONS				
SYM	ECN	DESCRIPTION	DATE	APPROVED
		SEE SHEET 1		



ITEM	EJECTOR OPEN DIMENSION "Y"	EJECTOR CLOSE DIMENSION "Z"	EJECTOR FIGURE
LONG LATCH	162.00 MAX	149.00 MAX	



UNLESS OTHERWISE SPECIFIED TOLERANCES		APPROVAL	DATE	Amphenol
.X	+/-	DRAWN	Oct.26.2023	
.XX	+/-	CHECKED		TITLE DDR5 287P R/LR DIMM CONNECTOR
.XXX	+/-	CHECKED		
FRACTIONS +/-		DRAWING FILE : DRAWING\DDR\CDDR514XXXXXXX		SIZE A3
ANGLES +/-		ANGLE OF PROJECTION		
FOR MATERIALS AND FINISHES SEE NOTES		REMOVE SHARP EDGES		DRAWING NO. C DDR514XXXXXXX
DIMENSIONS		SCALE		
U.S.	INCHES	NONE		REV. 3
(METRIC)	(MM)	SHEET 3 OF 7		

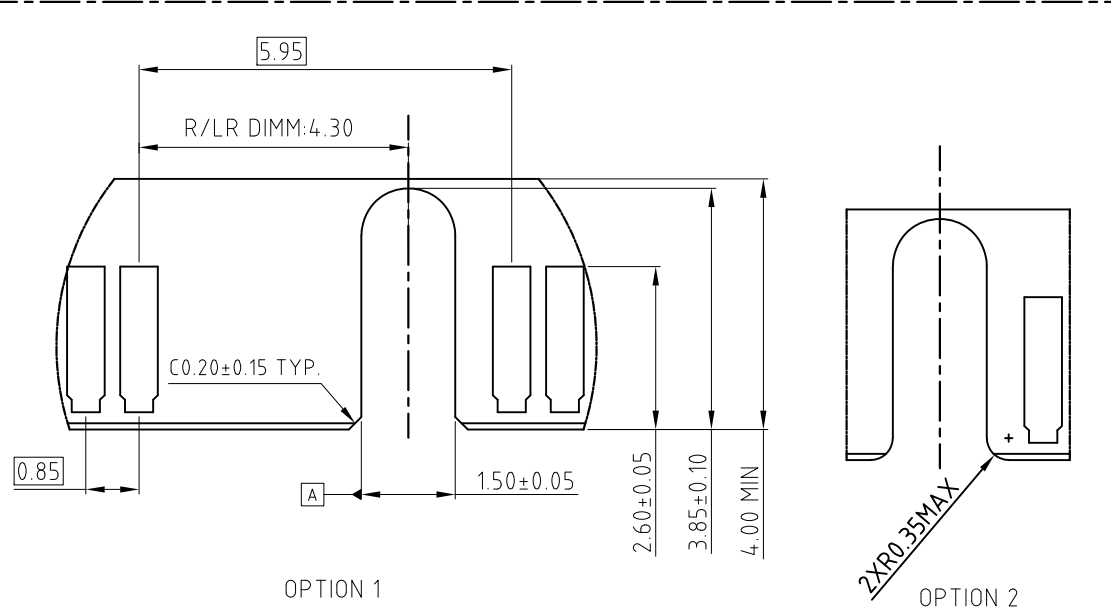
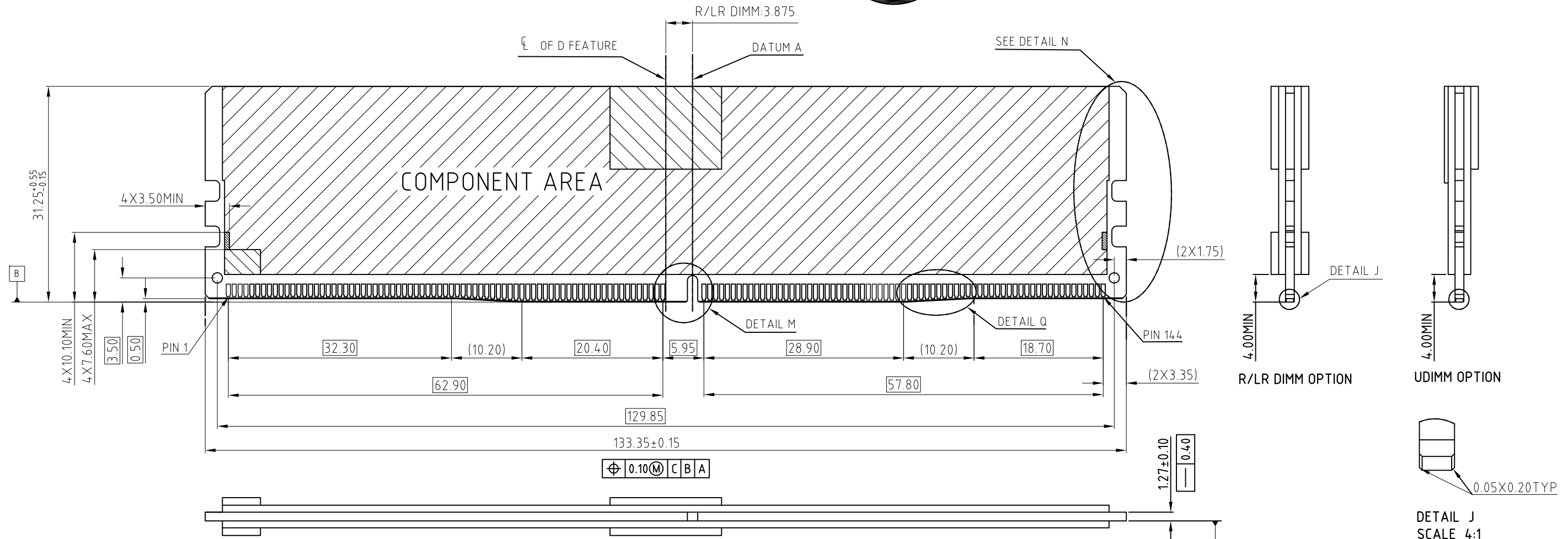
This document is the property of Amphenol Corporation and is delivered on the express condition that it is not to be disclosed, reproduced or used, in whole or in part, for manufacture or sale by anyone other than Amphenol Corporation without its prior consent, & that no right is granted to disclose or to use any information in this document.

CUSTOMER DRAWING

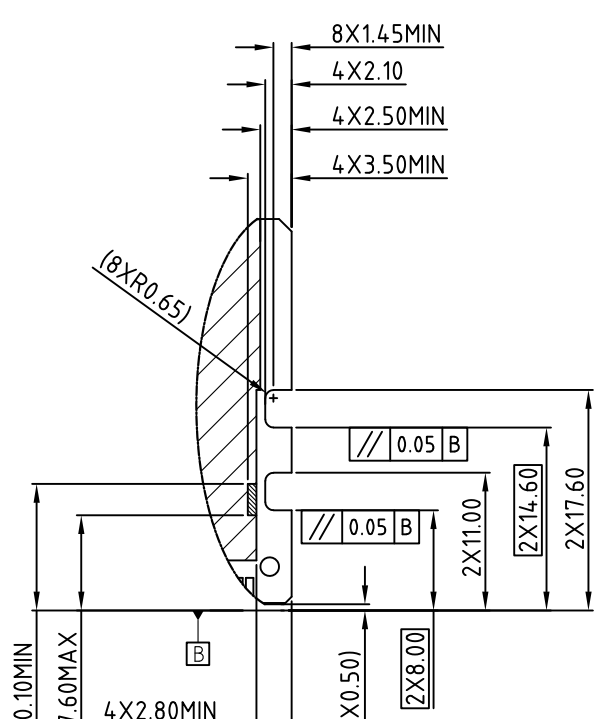


REVISIONS				
SYM	ECN	DESCRIPTION	DATE	APPROVED
		SEE SHEET1		

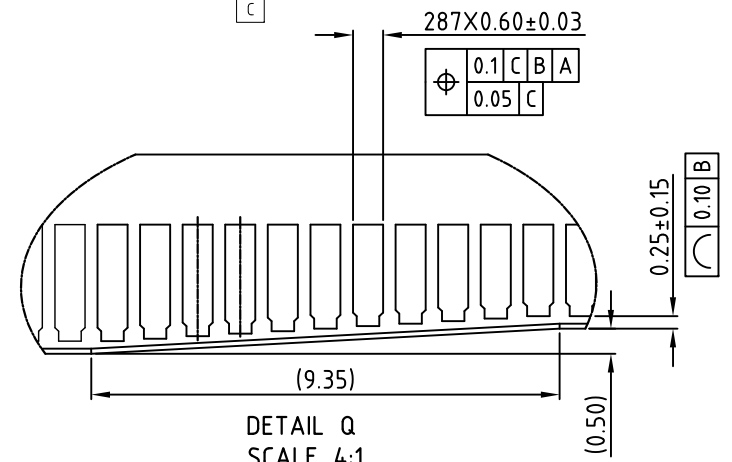
DDR5 MODULE
MORE INFORMATION REFER TO JEDEC MO-329



DETAIL M
SCALE 5:1



DETAIL N
SCALE 1:1



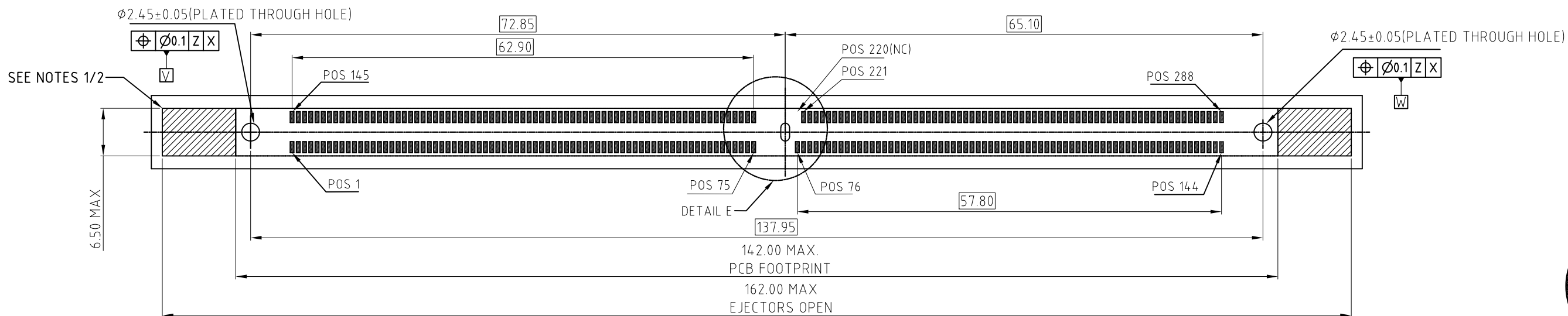
DETAIL Q
SCALE 4:1

UNLESS OTHERWISE SPECIFIED TOLERANCES		APPROVAL	DATE	Amphenol
U.S.	METRIC	DRAWN	DATE	
.X +/-	0.35	Kellen Yang	Oct.26.2023	TITLE DDR5 287P R/LR DIMM CONNECTOR
.XX +/-	0.25	CHECKED		
.XXX +/-	0.15	CHECKED		DRAWING FILE : DRAWING\DDR\CDDR514XXXXXXX
FRACTIONS +/-	3'			
ANGLES +/-				ANGLE OF PROJECTION
FOR MATERIALS AND FINISHES SEE NOTES				
REMOVE SHARP EDGES				SIZE A3
DIMENSIONS				
U.S. (METRIC)	INCHES (MM)			DRAWING NO. C DDR514XXXXXXX
				REV. 3
				SCALE NONE
				SHEET 4 OF 7

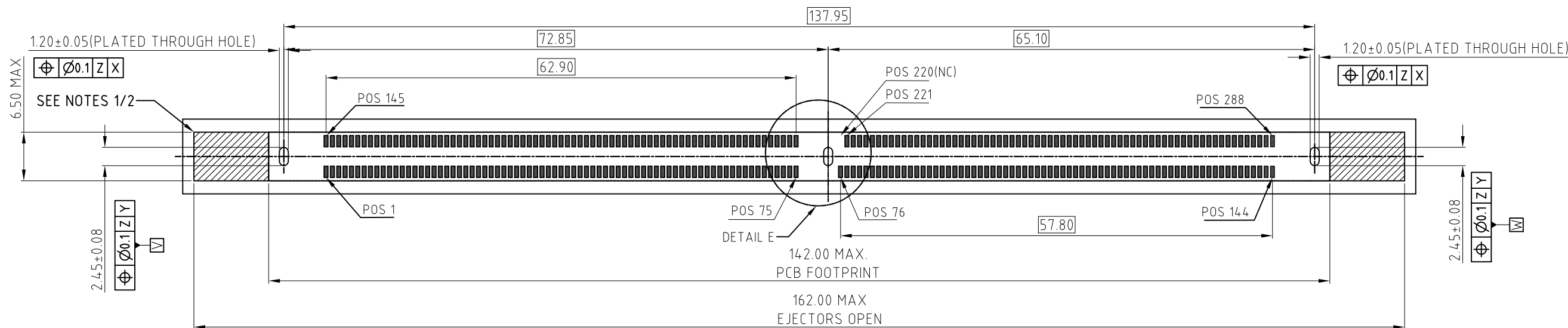
This document is the property of Amphenol Corporation and is delivered on the express condition that it is not to be disclosed, reproduced or used, in whole or in part, for manufacture or sale by anyone other than Amphenol Corporation without its prior consent, & that no right is granted to disclose or to use any information in this document.

CUSTOMER DRAWING

REVISIONS				
SYM	ECN	DESCRIPTION	DATE	APPROVED
		SEE SHEET1		



RECOMMENDED PCB FOOTPRINT (OPTION 1)



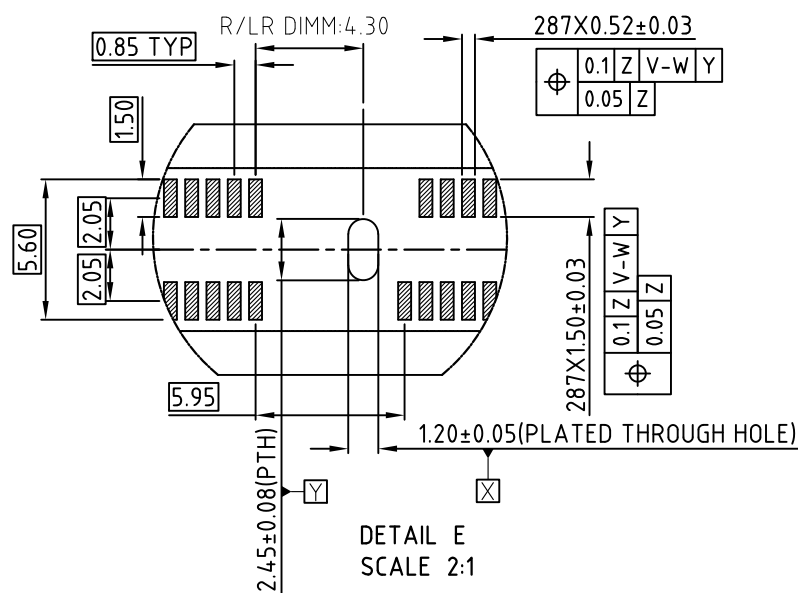
RECOMMENDED PCB FOOTPRINT (OPTION 2)

ADDITIONAL NOTES:

- KEEP OUT CROSS HATCH IS RESERVED FOR SOCKET EJECTORS AT BOTH ENDS.
- KEEP OUT ZONE IS HEIGHT LIMITED PER NOTE 1.
- RECOMMENDED STENCIL THICKNESS:

REFLOW CONDITION	THICKNESS OF STENCIL
AIR	0.18MM MIN
NITROGEN	0.18MM MIN
REWORK	0.20MM MIN

RECOMMENDED PCB LAYOUT
MORE INFORMATION REFER TO JEDEC SO-023



UNLESS OTHERWISE SPECIFIED TOLERANCES

	U.S.	METRIC
.X +/-		0.35
.XX +/-		0.25
.XXX +/-		0.15
FRACTIONS +/-		
ANGLES +/-		3°

FOR MATERIALS AND FINISHES SEE NOTES

REMOVE SHARP EDGES

DIMENSIONS

U.S.	INCHES
(METRIC)	(MM)

APPROVAL		DATE
DRAWN	Kellen Yang	Oct.26.2023
CHECKED		
CHECKED		

DRAWING FILE :
DRAWING\DDR\CDDR514XXXXXXX

ANGLE OF PROJECTION

Amphenol		
TITLE DDR5 287P R/LR DIMM CONNECTOR		
SIZE A3	DRAWING NO. C DDR514XXXXXXX	REV. 3
SCALE NONE	SHEET 5 OF 7	

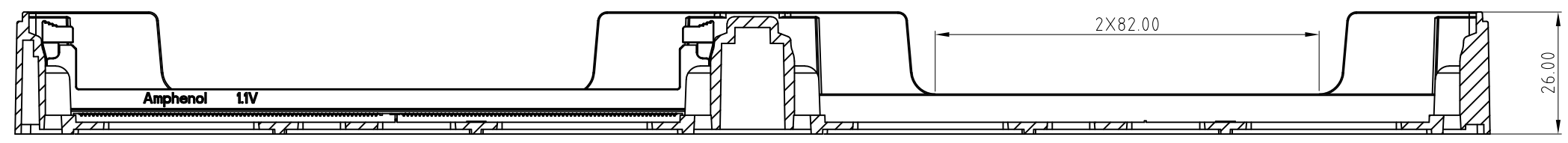
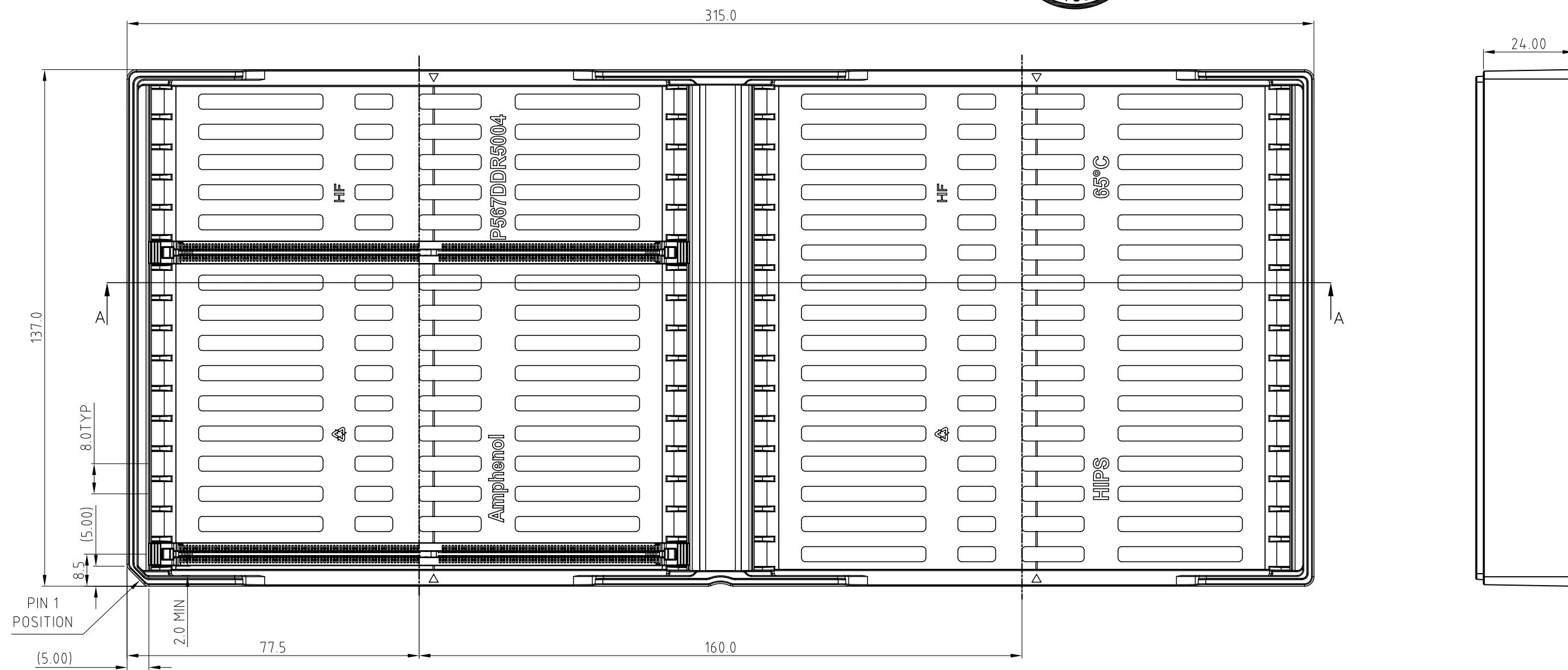
This document is the property of Amphenol Corporation and is delivered on the express condition that it is not to be disclosed, reproduced or used, in whole or in part, for manufacture or sale by anyone other than Amphenol Corporation without its prior consent, & that no right is granted to disclose or to use any information in this document.

CUSTOMER DRAWING

REVISIONS				
SYM	ECN	DESCRIPTION	DATE	APPROVED
		SEE SHEET1		



PACKING TRAY DRAWING



SECTION A-A

- NOTES:
 1. MATERIAL: HIPS, BLACK
 2. QUANTITY: 32PCS/TRAY

UNLESS OTHERWISE SPECIFIED TOLERANCES		APPROVAL		DATE	Amphenol
U.S. METRIC		DRAWN	Kellen Yang	Oct.26.2023	
.X	+/-	CHECKED			TITLE DDR5 287P R/LR DIMM CONNECTOR
.XX	+/-	CHECKED			
.XXX	+/-	DRAWING FILE :			SIZE DRAWING NO. REV. A3 C DDR514XXXXXXX 3
FRACTIONS	+/-	DRAWING\DDR\CDDR514XXXXXXX			
ANGLES	+/-	REMOVE SHARP EDGES			SCALE NONE SHEET 6 OF 7
		DIMENSIONS			
U.S.	INCHES	ANGLE OF PROJECTION			
(METRIC)	(MM)				

This document is the property of Amphenol Corporation and is delivered on the express condition that it is not to be disclosed, reproduced or used, in whole or in part, for manufacture or sale by anyone other than Amphenol Corporation without its prior consent, & that no right is granted to disclose or to use any information in this document.

CUSTOMER DRAWING

NOTES:

1. MATERIAL:
 - 1.1 HOUSING: HIGH TEMPERATURE THERMAL PLASTIC, UL94V-0, COLOR:OPTION.
 - 1.2 LATCH: HIGH TEMPERATURE THERMAL PLASTIC, UL94V-0. COLOR: OPTION.
 - 1.3 TERMINAL: COPPER ALLOY.
 - 1.4 BOARDLOCK: COPPER ALLOY.
 - 1.5 METAL CLIP: SUS.
2. FINISH:
 - 2.1 TERMINAL:
 - 2.1.1 CONTACT AREA: SELECTED GOLD PLATING;
 - 2.1.2 SOLDERING AREA: MATTE TIN PLATING 100u" THICKNESS MIN; UNDER PLATING: NICKEL PLATING 50u" THICKNESS MIN. UNLESS OTHERWISE SPECIFIED
 - 2.2 BOARDLOCK:
 - 2.2.1 100u" MIN LEAD FREE MATTE TIN OVER 50u" MIN NICKEL UNDERPLATED OVERALL.
3. ELECTRICAL CHARACTERISTICS:
 - 3.1 CONTACT CURRENT RATING:1.0A MAX
 - 3.2 INSULATION RESISTANCE:1MΩ MIN. 500V DC.
 - 3.3 DIELECTRIC WITHSTANDING VOLTAGE:500 VAC AT SEA LEVEL.
 - 3.4 LOW LEVEL CONTACT RESISTANCE:
 - INITIAL:40mΩ MAX.
 - FINAL:THE CHANGE IN LLCR BETWEEN THE READING AFTER STRESS AND THE INITIAL READING SHALL NOT EXCEED 20 mΩ MAX.
4. MECHANICAL CHARACTERISTICS:
 - 4.1 CONTACT RETENTION FORCE:300gf MIN/PER PIN.
 - 4.2 DURABILITY:25 CYCLES.
 - 4.3 INSERTION FORCE (MODULE TO CONNECTOR) :106.8N MAX. UNMATING FORCE :19.77N MIN.
5. RELIABILITY AND OTHER CHARACTERISTICS:
 - 5.1 SOLDERABILITY -LEAD FREE: JESD22-B102; CONDITION C, 8 HOURS ±15 MINUTES STEAM PRECONDITION.
 - 5.2 VIBRATION: EIA-364-28, RANDOM PROFILE:
 - 5 HZ @ 0.01g ²/HZ TO 20HZ @ 0.02g ²/HZ (SLOPE UP), 20 HZ TO 500HZ @ 0.02g ²/HZ (FLAT), INPUT ACCELERATION IS 3.13g RMS.
 - 5.3 CYCLIC TEMPERATURE AND HUMIDITY: PER EIA-364-31, METHOD III WITHOUT CONDITIONING, INITIAL MEASUREMENTS, COLD SHOCK AND VIBRATION.
 - 5.4 THERMAL SHOCK: PASSED PER EIA-364-32, METHOD A, TABLE 2, TEST CONDITION 1, -55°C TO 85°C. PERFORM 5 CYCLES IN MATED CONDITION.
 - 5.5 MECHANICAL SHOCK: EIA-364-27, TEST CONDITION E,
 - 5.6 OPERATING TEMPERATURE: -55°C TO 85°C.
6. HALOGEN-FREE COMPLIANT PRODUCT. MEET AMPHENOL SPEC # S-SN-004.
7. ORDER PN SYSTEM:

DDR5	XX	X	X	X	XXX	X	X
------	----	---	---	---	-----	---	---

DOUBLE DATA RATE 5 SERIES

XX: APPLICATION TYPE
14: SMT,287P, R/LR DIMM CONNECTOR

X: HOUSING COLOR
1: BLACK
2: NATURAL (IVORY)
3: YELLOW
4: BLUE

X: LATCH COLOR
1: BLACK
2: NATURAL (IVORY)
3: YELLOW
4: BLUE

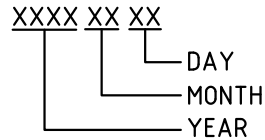
X: CONTACT PLATED
0: GOLD FLASH
1: 15u" Au ON CONTACT AREA
2: 30u" Au ON CONTACT AREA
3: 15u" MIN GXT
4: 30u" MIN GXT
5: 15u" Au ON CONTACT AREA AND 90u" Ni MIN ON UNDERPLATING:
6: 30u" Au ON CONTACT AREA AND 90u" Ni MIN ON UNDERPLATING:
8: 18u" AU ON CONTACT AREA

X: CUSTOMER CODE OPTION:
BLANK
0.....
9.....
A.....
Z.....

X: PACKING AND MYLAR OPTIONS
T: SOFT TRAY
H: HARD TRAY PACKAGE, WITH MYLAR "X"=50MM
J: HARD TRAY PACKAGE, WITH MYLAR "X"=70MM
K: HARD TRAY PACKAGE, WITHOUT MYLAR
M: HARD TRAY PACKAGE, WITH MYLAR "X"=90MM
C: HARD TRAY PACKAGE, WITH CAP "X"=70MM;"Y"=6MM
S: HARD TRAY PACKAGE, WITH MYLAR "X"=123.6MM

SEE SEQUENCE NUMBER TABLE

8. LASER MARKING DATE CODE:



REVISIONS				
SYM	ECN	DESCRIPTION	DATE	APPROVED
		SEE SHEET1		

SEQUENCE NUMBER		
CODE	OPTION DESCRIPTION	FIGURE DIM "H"
001	1. STANDARD HOUSING 2. STANDARD LATCH 3. FORK LOCK	(2.50)
002	1. STANDARD HOUSING 2. STANDARD LATCH 3. METAL TAB	(2.65)
005	1. STANDARD HOUSING 2. SHORT LATCH 3. FORK LOCK	(2.50)
006	1. STANDARD HOUSING 2. SHORT LATCH 3. METAL TAB	(2.65)
007	1. STANDARD HOUSING 2. STANDARD LATCH 3. METAL TAB	(1.85)
008	1. STANDARD HOUSING 2. SHORT LATCH 3. METAL TAB	(1.85)
009	1. STANDARD HOUSING 2. STANDARD LATCH 3. ONE FORK LOCK IN MIDDLE, TWO TABS ON BOTH SIDES	(2.50) (1.85)
011	1. STANDARD HOUSING 2. LONG LATCH 3. METAL TAB	(1.85)
012	1. STANDARD HOUSING 2. LONG LATCH 3. FORK LOCK	(2.50)



UNLESS OTHERWISE SPECIFIED TOLERANCES	
U.S.	METRIC
.X +/-	0.35
.XX +/-	0.25
.XXX +/-	0.15
FRACTIONS +/-	
ANGLES +/-	3°
FOR MATERIALS AND FINISHES SEE NOTES	
REMOVE SHARP EDGES	
DIMENSIONS	
U.S.	INCHES
(METRIC)	(MM)

APPROVAL	DATE
DRAWN Kellen Yang	Oct.26.2023
CHECKED	
CHECKED	
DRAWING FILE : DRAWING\DDR\CDDR514XXXXXXX	
ANGLE OF PROJECTION	

Amphenol		
TITLE DDR5 287P R/LR DIMM CONNECTOR		
SIZE A3	DRAWING NO. C DDR514XXXXXXX	REV. 3
SCALE NONE	SHEET 7 OF 7	