



PART NAME

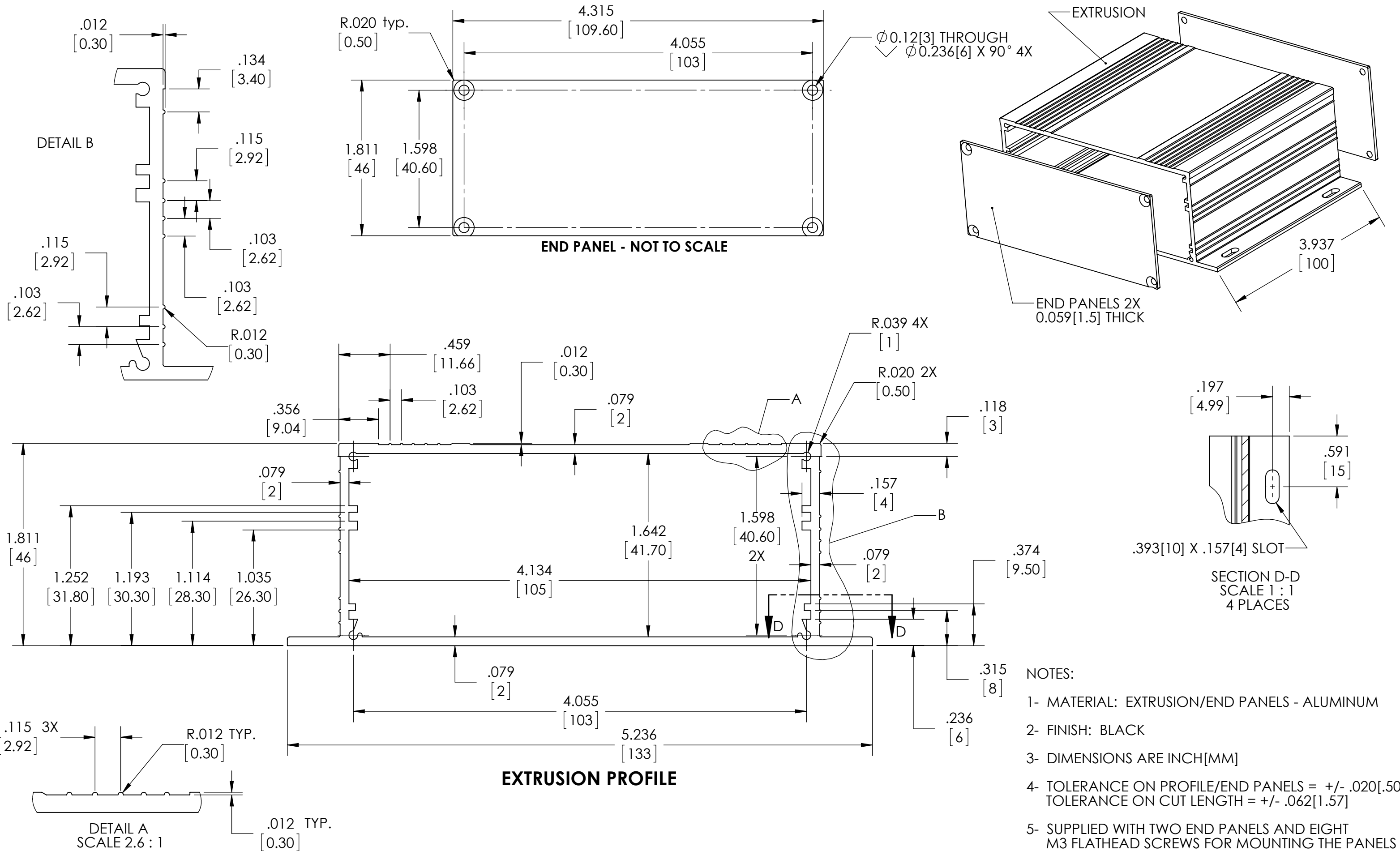
# EXTRUDED ALUMINUM ENCLOSURE

PART No.

EXT-9167

REVISION DATE

2/9/15



.012  
[0.30]

.134  
[3.40]

.115  
[2.92]

.103  
[2.62]

.103  
[2.62]

R.012  
[0.30]

R.020 typ.  
[0.50]

4.315  
[109.60]

4.055  
[103]

∅0.12[3] THROUGH  
∅0.236[6] X 90° 4X

1.811  
[46]

1.598  
[40.60]

**END PANEL - NOT TO SCALE**

EXTRUSION

3.937  
[100]

END PANELS 2X  
0.059[1.5] THICK

.103  
[2.62]

1.811  
[46]

1.252  
[31.80]

1.193  
[30.30]

1.114  
[28.30]

1.035  
[26.30]

.356  
[9.04]

.079  
[2]

.459  
[11.66]

.103  
[2.62]

.012  
[0.30]

.079  
[2]

R.039 4X  
[1]

R.020 2X  
[0.50]

.118  
[3]

A

.157  
[4]

B

1.598  
[40.60]  
2X

1.642  
[41.70]

4.134  
[105]

.079  
[2]

.374  
[9.50]

D

D

.079  
[2]

4.055  
[103]

5.236  
[133]

.315  
[8]

.236  
[6]

.197  
[4.99]

.591  
[15]

.393[10] X .157[4] SLOT

SECTION D-D  
SCALE 1:1  
4 PLACES

.115 3X  
[2.92]

R.012 TYP.  
[0.30]

DETAIL A  
SCALE 2.6:1

.012 TYP.  
[0.30]

**EXTRUSION PROFILE**

NOTES:

- 1- MATERIAL: EXTRUSION/END PANELS - ALUMINUM
- 2- FINISH: BLACK
- 3- DIMENSIONS ARE INCH[MM]
- 4- TOLERANCE ON PROFILE/END PANELS = +/- .020[.50]  
TOLERANCE ON CUT LENGTH = +/- .062[1.57]
- 5- SUPPLIED WITH TWO END PANELS AND EIGHT M3 FLATHEAD SCREWS FOR MOUNTING THE PANELS