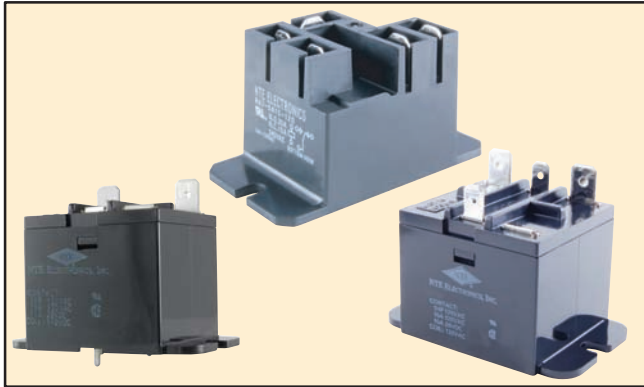


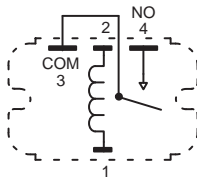
Features

- Miniature Relay Ideal for Switching Motor Load Lamp Load, Heater, etc.
- Creepage Distance of more than .08"
- Upper Mounting Bracket Type for Easy Wiring and Mounting
- .187" (4.75mm) Quick Connect Coil Terminals
- .250" (6.35mm) Quick Connect Terminals for Load
- PC Board Mount (P-suffix)

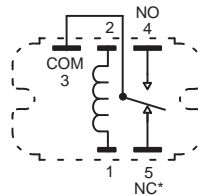


SPST-NO, 1 Form "A"

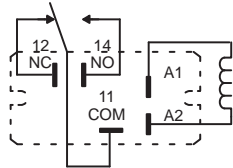
SPDT, 1 Form "C"



* Pin5 (NC) is missing on all SPST-NO devices.



SPDT, 1 Form "C"
R47-5A15-120



AC OPERATED						
NTE TYPE No.	Nom. Voltage	Contact Arr.	Coil Res. Ohms (Typ)	Approx. Nom. Power	Max. Contact Cur. @ 24VDC or 220VAC	Diag No.
R47-1A15-24P	24VAC	SPST-NO	-	1.3VA	15A	D43a
R47-5A15-120	120VAC	SPDT	-	1.6VA	20A/10A *	D43c
R47-5A15-120P	120VAC	SPDT	-	1.6VA	20A/10A *	D43a
DC OPERATED						
R47-1D15-12P	12VDC	SPST-NO	135	1.2W	15A	D43a
R47-1D15-24P	24VDC	SPST-NO	480	1.2W	15A	D43a
R47-1D15-110	110VDC	SPST-NO	12.3K	1.2W	15A	D43b
R47-1D15-110P	110VDC	SPST-NO	12.3K	1.2W	15A	D43a
R47-5D15-12	12VDC	SPDT	135	1.2W	15A	D43b
R47-5D15-110	110VDC	SPDT	12.3K	1.2W	15A	D43b
R47-5D15-110P	110VDC	SPDT	12.3K	1.2W	15A	D43a

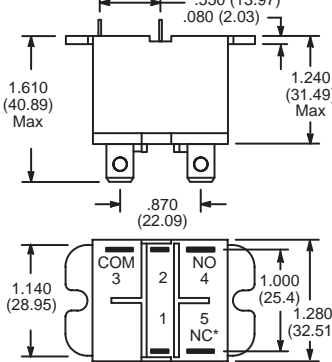
* 250VAC, Resistive, 25°C

R47 Series

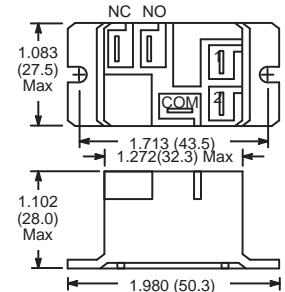


General Purpose, 15 Amp, AC SPST-NO & SPDT Relay for HVAC, Appliance Controls, and Copiers.

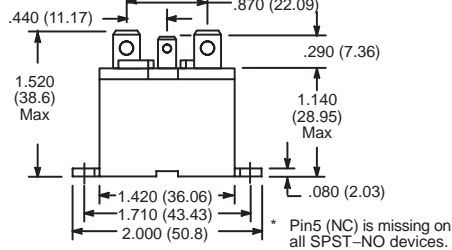
D43a



D43c



D43b



Electrical Specifications

Contact

Rating: 15 Amp @ 28VDC (resistive load)
 15 Amp @ 120VAC (inductive load)
 10 Amp @ 240VAC (inductive load)
 1HP @ 120VAC
 20A/10A, 250VAC (resistive load) **R47-5A15-120 ONLY**

Material: AgCdO
 AgSnO₂ **R47-5A15-120 ONLY**

Resistance: 30mΩ (max.)
 75mΩ (at 1A at 5VDC or 12VAC) **R47-5A15-120 ONLY**

Coil

Coil Voltages: See Chart

Pick-up Voltages: 80% of nominal Coil Vltg.

Drop-out Voltages: 30% of rated voltage (min.)

Resistance: See Chart

Operational Characteristics

Timing Values: Operate Time: 20 mS (max.)

. . . . Operate Time: 15 mS (max.) **R47-5A15-120**

Insulation Characteristics

Dielectric Strength: 2000VAC, 50/60Hz for 1 minute
 (1000VAC between open contacts)
 2500V_{rms} **R47-5A15-120 ONLY**
 (1500VAC between open contacts)

Insulation Resistance: 100MΩ min. (at 500VDC)
 1MΩ min. **R47-5A15-120 ONLY**

Environmental Characteristics

Operating: -10°C to +55°C

Life

Mechanical: 10,000,000 operations min
 5,000,000 operations min **R47-5A15-120 ONLY**

Weight

Std: 1.55 oz (44 grams) approx
 1.16 oz (33 grams) approx **R47-5A15-120 ONLY**