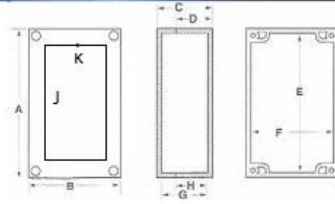
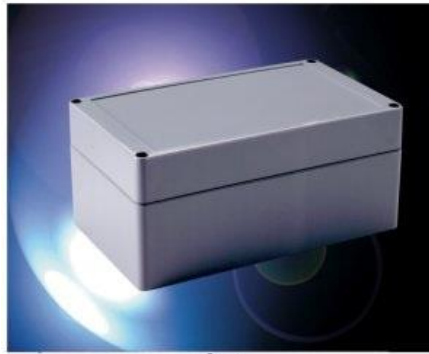


NEMA Boxes

NEMA 4 X - PNR Series



These Polycarbonate and high-impact ABS molded enclosures meet NEMA 1, 2, 4, 4x, 12, and 13 specifications and are ideal for PCB enclosures, junction boxes and other applications in the electrical and electronic industries. Available in a variety of sizes, these molded enclosures are offered in three different versions.

Style 1 - Light gray polycarbonate body and cover. Body/Cover - UV stabilized , UL94-HB flammability rating, suggested service temperature -40C to 120C.

Style 2 - Light gray polycarbonate body and clear polycarbonate cover. Body/Cover - UV stabilized UL94-HB flammability rating suggested service temperature -40C to 120C.

Style 3 - (For indoor use only) Dark gray ABS body and cover. Body/Cover - UL94-HB flammability rating, suggested service temperature 0C to 80C.

Design Features

- Designed to IP65 of IEC 529 and NEMA 1, 2, 4, 4x, 12, and 13 specifications
- UL508-4x listed
- Wall mounting holes and cover attaching screws are outside the sealing area thus preventing ingress of moisture and dust.
- Most models have internal guide slots for mounting PCB assemblies vertically.
- Internal bosses allow mounting of PCBs horizontally or for connection of terminals etc, into threaded brass inserts.
- Cover screws are M-4 stainless steel, non-magnetic and fasten into threaded brass inserts.
- **PNR-Series Boxes feature a smooth, recessed top cover. See [PN-Series](#) for flat top cover.**

NEMA 4X - PNR Series

Catalog Numbers				External Dimensions (Inches)				Internal Dimensions (Inches)					Wgt.	Optional Internal Panel	
Style 1	Style 2	Style 3	Drawings	A	B	C	D	E	F	G	H	J	K	Ozs.	
PNR-2600	PNR-2600-C	PNR-2600-DG	PDFDXF	3.94	3.94	2.17	1.57	3.64	3.64	1.92	1.45	3.33	2.55	6.3	PNX-92600
PNR-2601	PNR-2601-C	PNR-2601-DG	PDFDXF	3.94	3.94	3.54	2.95	3.64	3.64	3.29	2.84	3.33	2.55	8.3	PNX-92600
PNR-2602	PNR-2602-C	PNR-2602-DG	PDFDXF	4.72	3.15	2.17	1.57	4.45	2.85	1.92	1.45	3.54	2.59	6	PNX-92602
PNR-2603	PNR-2603-C	PNR-2603-DG	PDFDXF	4.72	3.15	3.35	2.76	4.45	2.85	3.1	2.64	3.54	2.59	7.8	PNX-92602
PNR-2604	PNR-2604-C	PNR-2604-DG	PDFDXF	7.87	4.72	3.54	2.36	7.54	4.45	3.29	2.24	6.7	4.14	16.3	PNX-91434
PNR-2605	PNR-2605-C	PNR-2605-DG	PDFDXF	9.45	4.72	2.36	1.33	9.15	4.45	1.92	1.25	8.25	4.14	14.7	PNX-92605
PNR-2606	PNR-2606-C	PNR-2606-DG	PDFDXF	9.45	4.72	3.94	2.95	9.12	4.42	3.69	2.84	8.25	4.14	19.3	PNX-92605
PNR-2607	PNR-2607-C	PNR-2607-DG	PDFDXF	7.87	5.91	2.17	1.57	7.54	5.61	1.92	1.45	6.65	5.32	14	PNX-92607
PNR-2608	PNR-2608-C	PNR-2608-DG	PDFDXF	7.87	5.91	2.95	2.36	7.54	5.61	2.65	2.24	6.65	5.32	15.7	PNX-92607