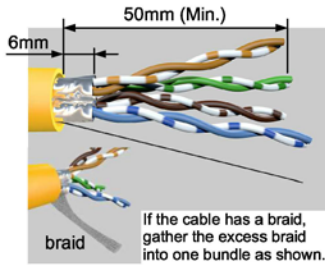
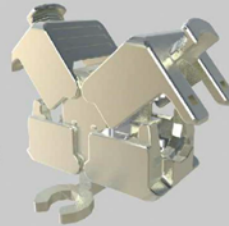


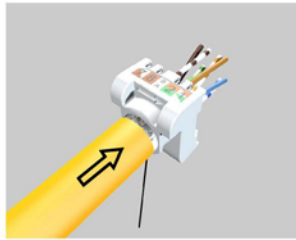
Stewart Connector

Instruction Sheet

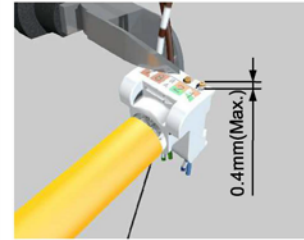
The T-Coupler has two different colored wire managers. They can be used on either side of the T-Coupler by following the same wiring scheme for each side (T568A/568B).



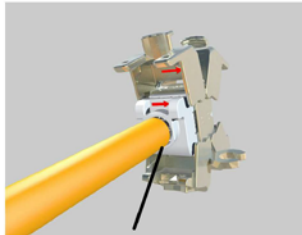
Step 1:
Strip at least 25mm of jacket off of the cable.
Pull back the braid, and retain 6mm of foil from the cable end.



Step 2:
Put wires through wire management and arrange in accordance with wiring color code (T568A/B).



Step 3:
Trim excess wires.
The tips of the wires should protrude no more than 0.4mm.



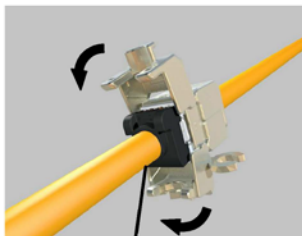
Step 4:
Put the wire management on the IDC tower.
NOTE: The arrows on coupler and cap should face the same direction.



Step 5:
Close the covers all the way, which will terminate the wires to the IDC's. Then wrap the drain wire (or bundled braid) around the strain relief.



Step 6:
Tighten a cable tie around the strain relief to complete the assembly for one side.



Step 7:
Repeat steps 1~6 to the other side to complete the termination.



Optional :
The T-Coupler can be attached to a surface using screws. For a more compact installation you can overlap the rings and use one screw between couplers.

