



# MasterConnect LEDtube EM/mains T8



## MasterConnect LEDtube IA 1500mm UO 25W865 T8

Introducing MasterConnect LED lamps – smart retrofit LED lamps that give you an easy and seamless way to upgrade to connected lighting. Simply set up with an intuitive app, MasterConnect LED lamps can be programmed to maximise energy savings, while providing wireless and automated light for your comfort and convenience. What's more, it is fully scalable and upgradable. If you want to enjoy further benefits, such as remote control or management dashboard, you can simply keep the currently installed lamps and add a gateway to experience all the advantages of a cloud-based system. There's no better way to take lighting solutions to the next level.

### Product data

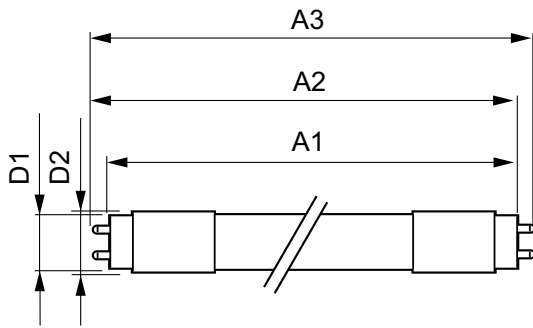
General Information		Luminous efficacy (rated) (nom.)		148.00 lm/W
Cap base	G13 [ Medium Bi-Pin Fluorescent]	Colour consistency	<6	
EU RoHS compliant	Yes	Colour rendering index (nom.)	83	
Nominal lifetime (nom.)	60000 h	LLMF at end of nominal lifetime (nom.)	70 %	
Switching cycle	200,000X	<b>Operating and Electrical</b>		
Technical type	25-58W	Input frequency	50 to 60 Hz	
	Sphere	Power (Rated) (Nom)	25 W	
<b>Light Technical</b>		Lamp current (max.)	117 mA	
Colour Code	865 [ CCT of 6,500 K]	Lamp current (min.)	108 mA	
Beam Angle (Nom)	160 °	Starting time (nom.)	0.5 s	
Luminous flux (nom.)	3700 lm	Warm-up time to 60% light (nom.)	0.5 s	
Colour designation	Cool Daylight	Power factor (nom.)	0.9	
Correlated Colour Temperature (Nom)	6500 K			

# MasterConnect LEDtube EM/mains T8

Voltage (Nom)	220-240 V
<b>Temperature</b>	
T-ambient (max.)	45 °C
T-ambient (min.)	-20 °C
T storage (max.)	65 °C
T storage (min.)	-40 °C
T-Case maximum (nom.)	65 °C
<b>Controls and Dimming</b>	
Dimmable	Wireless Dim
<b>Mechanical and Housing</b>	
Product length	1500 mm
Bulb shape	Tube, double-ended
<b>Approval and Application</b>	
Energy Efficiency Class	D

Energy-saving product	Yes
Approval marks	RoHS compliance TUV CE marking KEMA Keur certificate
Energy consumption kWh/1,000 hours	25 kWh
	406203
<b>Product Data</b>	
Full product code	871869966978200
Order product name	MasterConnect LEDtube IA 1500mm UO 25W865 T8
EAN/UPC – product	8718699669782
Order code	66978200
SAP numerator – quantity per pack	1
Numerator – packs per outer box	10
SAP material	929002210902
SAP net weight (piece)	0.450 kg

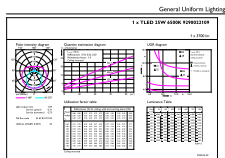
## Dimensional drawing



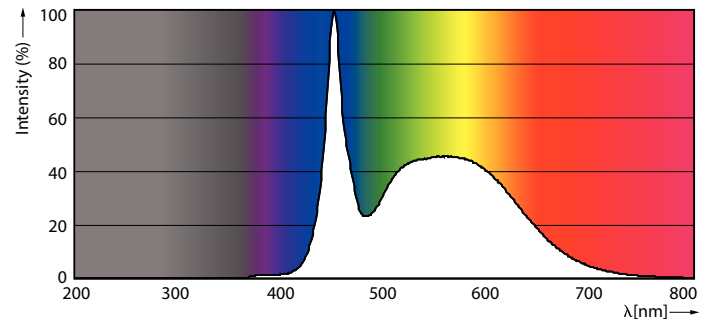
TLED 5ft 230V 25.5-58W 3700lm 6500K G13

Product	D1	D2	A1	A2	A3
MasterConnect LEDtube	25.8	28 mm	1498.7	1505.8	1512.9
IA 1500mm UO 25W865 T8	mm		mm	mm	mm

## Photometric data



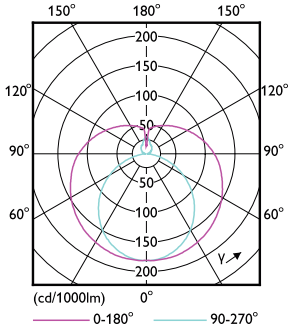
MC LEDtube 25W G13 3700lm 865



MC LEDtube G13 865

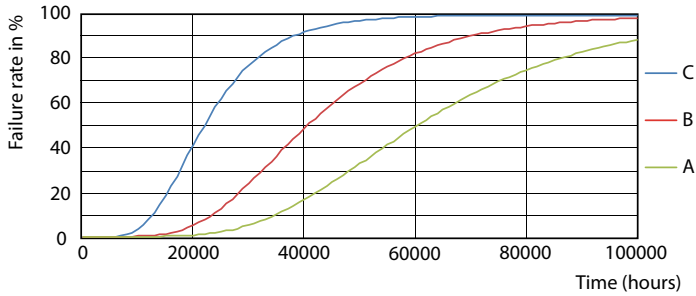
# MasterConnect LEDtube EM/mains T8

## Photometric data

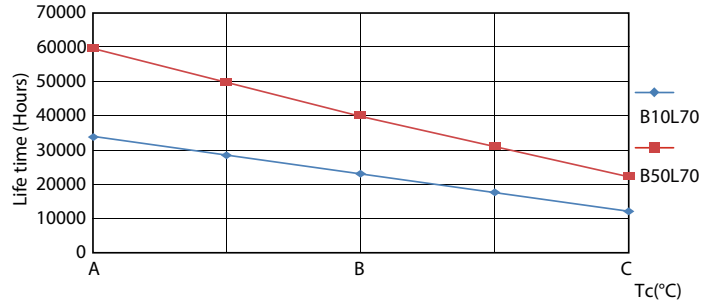


MC LEDtube G13

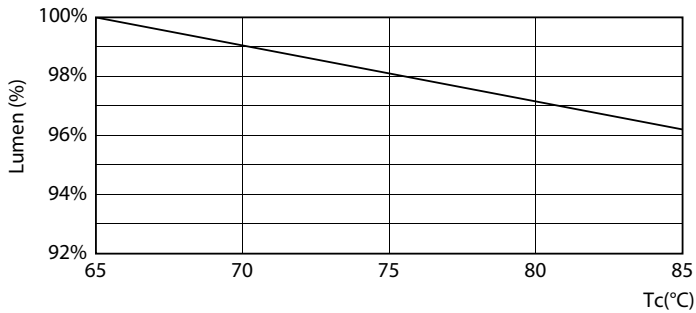
## Lifetime



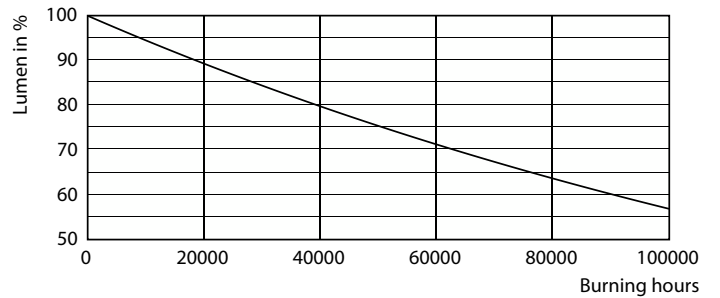
LEDtube\_60K\_FailureRate



LEDtube\_60K\_LifetimeVsTc



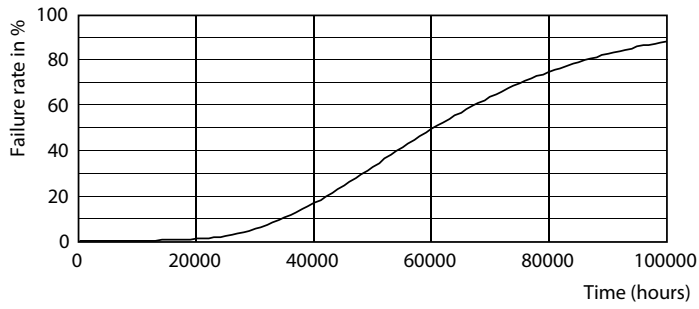
MC LEDtube 25W 60K LumenVsTc



LEDtube\_60K

# MasterConnect LEDtube EM/mains T8

## Lifetime



LEDtube\_60K

