



Commando

Industrial Plugs and Sockets

7:20

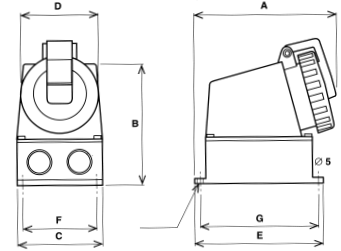
**SOCKET OUTLETS
ANGLED SURFACE MOUNTING
63 AMP**

IP 67 WATERTIGHT

Amps	Pin. Configuration	Voltage & Frequency		Terminal Capacity sq. mm*	Dimensions in mm					
		200-250V 50-60Hz List No	380-415V 50-60Hz List No		A	B	C	E	F	G
63	2P+E	K9857 BLU 6		1 - 2.5	255	215	150	187	129	124
63	3P+E		K9858 RED 6	2.5 - 6	255	215	150	187	129	124
63	3P+N+E		K9859 RED 6	6 - 25	255	215	150	187	129	124

⚡ Earth Hour Position

*Solid or Stranded conductors



**SOCKET OUTLETS
STRAIGHT PANEL MOUNTING
16 AND 32 AMP**

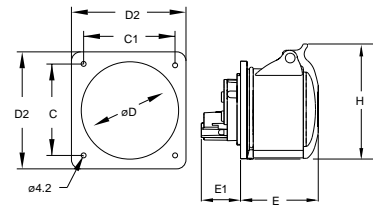
ALL FLANGES HAVE THE SAME FIXING CENTRES AND OUTSIDE DIMENSIONS TO ASSIST PANEL BUILDING. SEE BELOW FOR MINIMISED FLANGE OPTION.

IP 44 SPLASHPROOF

Amps	Pin. Configuration	Voltage & Frequency				Terminal Capacity sq. mm *	Dimensions in mm						
		100-130V 50-60Hz List No	200-250V 50-60Hz List No	380-415V 50-60Hz List No	440-460V 50-60Hz List No		C	C1	D	D2	E	E1	H
16	2P+E	K9400 YEL 4	K9401 BLU 6			1.5 - 4	60-61	60-61	49	75	56	29	79
16	3P+E	K9405 YEL 4	K9406 BLU 9	K9407 RED 6		1.5 - 4	60-61	60-61	59	75	58	30	87
16	3P+N+E	K9413 YEL 4	K9414 BLU 9	K9415 RED 6	K9416 RED 11	1.5 - 4	60-61	60-61	59	75	60	31	89
32	2P+E	K9432 YEL 4	K9433 BLU 6			2.5 - 10	60-61	60-61	66	75	70	34	93
32	3P+E	K9435 YEL 4		K9437 RED 6		2.5 - 10	60-61	60-61	66	75	70	34	93
32	3P+N+E		K9444 BLU 9	K9445 RED 6	K9446 RED 11	2.5 - 10	60-61	60-61	66	75	70	34	93

⚡ Earth Hour Position

*Solid or Stranded conductors



**MINIMISED FLANGE
FOR STRAIGHT PANEL MOUNTING 16 AMP OUTLETS**

NOTE: FIXING CENTRES COMPATIBLE WITH NON K SERIES PRODUCT

IP 44 SPLASHPROOF

Amps	Pin. Configuration	List No	Dimensions in mm			
			C	C1	D	D2
16	2P+E	K9996	44-47	44-47	49	56
16	3P+E, 3P+N+E	K9997	50-52	50-52	59	66

Minimised flange can be used to replace flange supplied with straight panel mounted outlets. To be ordered as additional part.

