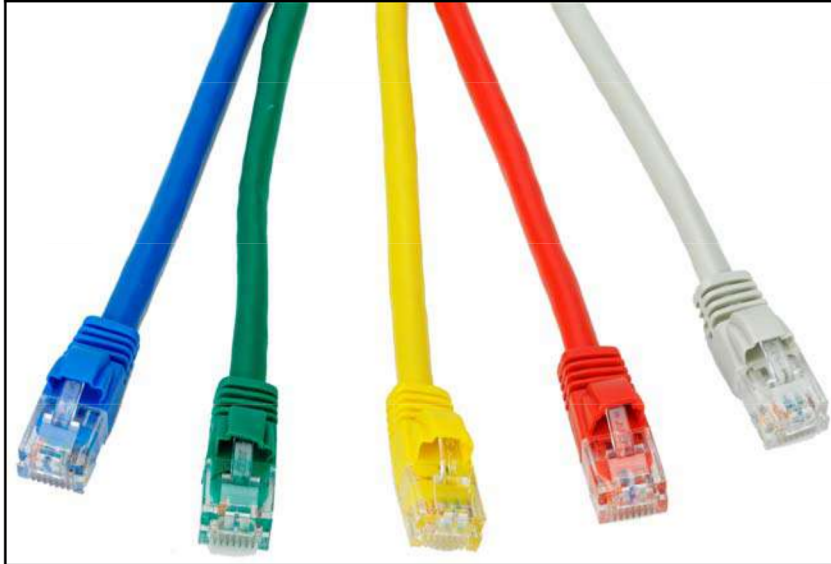


Category 6 Patch Leads



Category 6 Patch Leads (SP*?)

* = Length

? = Colour

Features

- Offer full compliance with the Category 6 standard at component level (TIA/EIA-568-B.2-1)
- Fitted with flush moulded snag-less strain relief boots, suitable for patching into high density hubs and switches
- Individually polythene bagged and marked with length
- Colours: grey, red, yellow, green, black and blue. Additional colours available to order
- 100% tested

Specifications

Materials

- Contacts: 50 μ m/1.27 μ m gold plated
- Conductors: 24 AWG stranded bare copper with cruciform divider
- Jacket: PVC