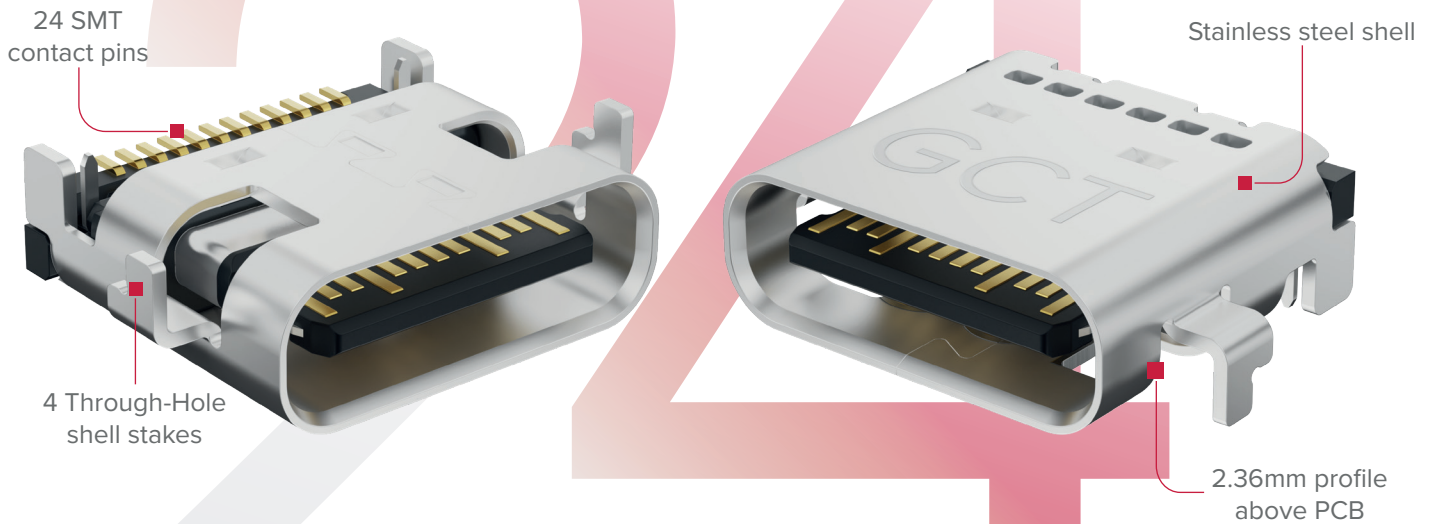


# Value Engineered Mid-Mount 24-Pin USB Type-C®

## Key features

- > Cost-effective solution
- > USB 3.2 Gen 2 with a 0.8mm offset
- > Low profile only at 2.36mm

USB4525 has been developed with fully automated assembly and offers full specification USB Type-C products without sacrificing quality. SMT contact pins with 4 Through-Hole shell stakes ensure superior PCB retention and Mid-Mount allows engineers increased design options where a low profile is crucial.



### Product Specifications

Interface	Current rating	No. Of Contacts	Mating Cycles	USB Specification	Profile Above PCB	PCB Mount Type
USB Type-C	5 Amps	24	10,000	3.2 Gen 2	2.36mm	Mid-Mount

## Applications

[gct.co/connector/usb4525](https://gct.co/connector/usb4525)



Digital and smart TV



Gaming stations



Virtual reality technology



Consumer electronics