

MeacoDry Arete[®] One

Introducing the quietest, most efficient combined dehumidifier and air purifier ever made.



Designed in the UK



EXCELLENCE IN ALL THINGS

Stylishly simple

Designed in Britain, with the input of more than 2000 customers, we have created a combined dehumidifier and air purifier that's a new benchmark in style and quality.



Designed in the UK

www.meaco.com

EXCELLENCE IN ALL THINGS

Optimised for Europe

Every aspect of the design and performance of this dehumidifier has the European user and climate in mind.

For example: you told us that you wanted a dehumidifier you could push up against the wall to save space on your landing or in your hallway. With Arete, you can.

Arete dehumidifiers are designed to work best between 10°C and 20°C to extract the maximum amount of water from the air when you need it most. Standard machines from the Far East are designed to work best at 27°C. Arete is designed for Europe.



Designed in the UK

www.meaco.com



EXCELLENCE IN ALL THINGS

Smart laundry

Arete dries clothes. A single button switches on maximum performance for six hours, and Arete monitors energy consumption and turns the compressor off when the relative humidity reaches 35%rh to save power. The powerful fan remains on throughout to ensure your clothes are dried quickly and efficiently.

Smart humidity

To get the best out of Arete all you have to do is press a single button. Arete will take care of the rest - deciding on the correct fan speed and switching performance up or down as required.

Night mode

Arete is so quiet, you can use it in or close to your bedroom without disruption. Just press the Night mode button to switch off all lights and bleeps, and the machine runs in quiet mode. Check the status at any time, knowing that after five seconds it will revert back into Night Mode.



Designed in the UK

www.meaco.com

Our quietest dehumidifier ever

This new range of Arete combined dehumidifiers and air purifiers have been five years in the design process. For the past two years we have been working on making them the quietest dehumidifiers on the market because we know how important low noise levels are to you.

The incredibly low noise levels are:

MeacoDry Arete One 10L is just 35dB

MeacoDry Arete One 12L is just 35dB

MeacoDry Arete One 20L is just 38dB

MeacoDry Arete One 25L is just 40dB

Incredibly quiet!

EXCELLENCE IN ALL THINGS

MEACO



Designed in the UK

www.meaco.com

EXCELLENCE IN ALL THINGS

Low energy benefits

We know how much our customers love having dehumidifiers that are cheap to run. Normally, when you push noise levels down energy consumption goes up. But with Arete, all that has changed. We can now offer highly efficient running costs, high extraction rates and the lowest-ever noise levels.

Just one of the reasons why we are so proud of Arete.

In our research, carried out in April 2022, we found that the Meaco Arete One 20L was £143 a year cheaper to run than our worst performing competitor, based on six hours use per day over 365 days! The next best machine after our Arete was still £39.25 more expensive than the Arete One 20L to run. If you keep your machine for 5 years that is a minimum saving of £196.25 to a massive £715.00.

(see the last page for full specifications)



Designed in the UK

www.meaco.com

Simple controls

No complicated controls: one press of the large Smart Humidity button is all you need to set up your dehumidifier and walk away. Arete will do the rest.

Meaco control logic

Arete is designed to maintain a steady humidity in your home whilst minimising electricity consumption. Our control logic also manages the fan speed to increase extraction rates when required and switch to a quieter mode when the target humidity is almost reached.

When the humidity has been reached Arete will switch off for 30 minutes, after which it samples the air for changes and responds accordingly.

Child lock

Just in case small fingers want to play with Arete, you can lock them out!



Designed in the UK

EXCELLENCE IN ALL THINGS



Designed in the UK

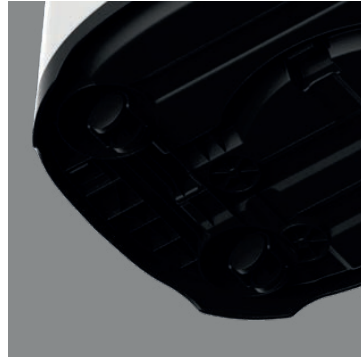
www.meaco.com

It's all in the detail



Push it against the wall

Side air intakes allow the dehumidifier to sit discreetly against the wall.



Feet hiding the wheels

Castors are hidden behind feet that help the dehumidifier blend into any room.



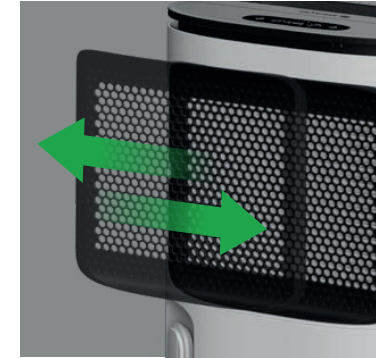
Hidden handle

Sleek lines hide a neat carry handle.



Cable tidy

Keep wires out of the way and tangle free when not in use.



Sliding filter

Easily clean the filter from the side, without moving the dehumidifier.



Designed in the UK

Why the tank is important

You will probably only touch the control panel for a few seconds each day. But you will be emptying the tank and dealing with the water on a regular basis. So we put a lot of time and attention into getting it right.

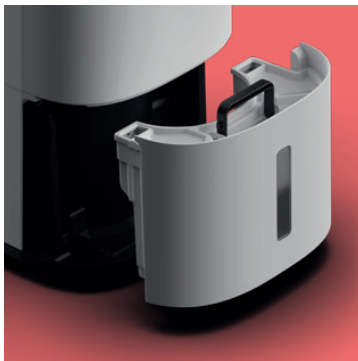
We made the tank extra large at 4.8 litres (2.5 litres in the 10L & 12L models) so that you don't have to empty it so often. And when you do, it's easy.

Before the 'tank full' light comes on, the machine has done a final blow through so that no water should drip from the spout when you remove the tank.

We have also designed the tank so it's easy to grip, pull out and replace.

The tank has a cover and a carry handle* so you don't spill a drop, and you can pour from both the left and right sides, making life easy.

If you want to fit a hose for continuous drainage then you can. There is even an adapter in the lid of the tank so that you can use a standard length of garden hose. This saves the planet from more plastic and it saves you money.



Easy to remove the tank



Easy to empty the tank



Use your garden hose for drainage

*tank carry handle on 20L & 25L only.



Designed in the UK

Accessories



Pump

(only 20 & 25L)

- Self-powered by the dehumidifier.
- Drains water up to 2.5m high.
- Comes with 3 metres of hose.
- Pump is automatically triggered every time the tank is full.



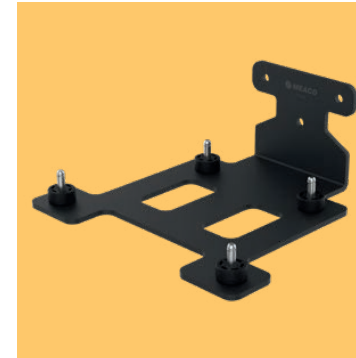
HEPA filter

- H13 medical grade HEPA filter to help clean the air.
- 99.75% retention of particles as small as 0.3 micrometers (μm) in diameter.
- The 20L/25L HEPA filters are 75% larger than the filter on the Low Energy range for better cleaning.
- Arete can be used in a dedicated air purifier mode when you don't need to dry the air.



Charcoal filter

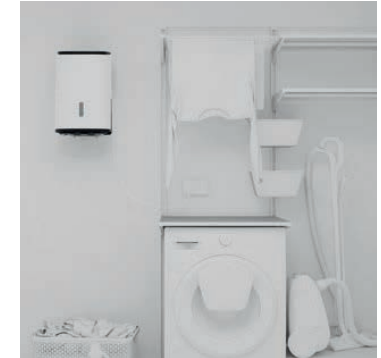
- Superior quality coconut charcoal filter.
- Designed to remove smells and VOCs from the air.
- You now have a choice of either a HEPA or charcoal filter for Arete.
- Choose your filter depending on your personal requirements.



Wall mounting bracket

(only 10 & 12L)

- Safe and secure stainless steel wall mounting system.
- Bespoke design for Arete.
- Special vibration dampening to prevent noise transfer through the wall.
- Still allows easy access to the filter and water tank.



Designed in the UK

EXCELLENCE IN ALL THINGS



Designed in the UK

www.meaco.com

Specifications

	MeacoDry Arete One - 10L	MeacoDry Arete One - 12L	MeacoDry Arete One - 20L	MeacoDry Arete One - 25L
Type	Compressor	Compressor	Compressor	Compressor
Variable humidistat	Yes between 40%rh and 70%rh	Yes between 40%rh and 70%rh	Yes between 40%rh and 70%rh	Yes between 40%rh and 70%rh
Extraction rate	See extraction rate data tab	See extraction rate data tab	See extraction rate data tab	See extraction rate data tab
Noise level	35 and 38dB(A)	35 and 38dB(A)	38 and 40dB(A)	40 and 42dB(A)
Night mode	Yes	Yes	Yes	Yes
Laundry mode	Yes	Yes	Yes	Yes
Air flow	Low fan speed: 80m ³ /h and high fan speed 100m ³ /h	Low fan speed: 80m ³ /h and high fan speed 100m ³ /h	Low fan speed: 145m ³ /h and high fan speed 160m ³ /h	Low fan speed: 150m ³ /h and high fan speed 175m ³ /h
Water tank size	2.5L	2.5L	4.8L	4.8L
Continuous drainage	Yes	Yes	Yes	Yes
HEPA filter	H13	H13	H13	H13
Fan speeds	2 (automated depending on humidity level)	2 (automated depending on humidity level)	2 (automated depending on humidity level)	2 (automated depending on humidity level)
Refrigerant	R290 / 35g	R290 / 45g	R290 / 65g	R290 / 90g
Operating temperatures	+5° to +35°C	+5° to +35°C	+5° to +35°C	+5° to +35°C
Approximate house size	Flats to 5 bed houses	Flats to 5 bed houses	Flats to 5 bed houses	Flats to 5 bed houses
Power consumption	See extraction rate data tab	See extraction rate data tab	See extraction rate data tab	See extraction rate data tab
Power supply	220-240V, 50Hz	220-240V, 50Hz	220-240V, 50Hz	220-240, 50Hz
Nett weight	10.7kg	10.9kg	15kgs	16kgs
Gross weight	11.8kg	11.9kg	16.4kgs	17.4kgs
Product dimensions (HWD)	472 x 319 x 237mm	472 x 319 x 237mm	562 x 376 x 232mm	562 x 376 x 232mm
Box dimensions (HWD)	515 x 370 x 280mm	515 x 370 x 280mm	662 x 424 x 328mm	662 x 424 x 328mm



Designed in the UK

Extraction rate data









Test condition	Extraction rate		Power consumption	
Model	MeacoDry Arete One - 20L	MeacoDry Arete One - 25L	MeacoDry Arete One - 20L	MeacoDry Arete One - 25L
10°C and 50%rh	2.0L/day	2.2L/day	179W	215W
10°C and 60%rh	3.4L/day	3.5L/day	180W	220W
20°C and 50%rh	5.8L/day	7.0L/day	211W	260W
20°C and 60%rh	8.5L/day	10.7L/day	216W	267W
30°C and 60%rh	13.8L/day	16.8L/day	265W	330W
26.7°C and 60%rh	11.9L/day	14.3L/day	239W	305W
10°C and 80%rh	5.7L/day	7.2L/day	184W	230W
20°C and 80%rh	14.0L/day	17.5L/day	225W	280W
30°C and 80%rh	20.0L/day	25.7L/day	281W	365W

Test condition	Extraction rate		Power consumption	
Model	MeacoDry Arete One - 10L	MeacoDry Arete One - 12L	MeacoDry Arete One - 10L	MeacoDry Arete One - 12L
10°C and 60%rh	1.4L/day	2.0L/day	129W	130W
20°C and 60%rh	4.3L/day	5.2L/day	151W	151W
30°C and 60%rh	6.9L/day	8.2L/day	185W	186W
10°C and 80%rh	2.3L/day	3.8L/day	129W	131W
20°C and 80%rh	7.3L/day	8.3L/day	157W	157W
30°C and 80%rh	10.4L/day	12.2L/day	199W	198W



Designed in the UK

Product EAN numbers

Product	EAN	Product	EAN
Arete 10L 	UK 5 060409 602927 EU 5 060409 602941	Arete 12L 	UK 5 060409 602934 EU 5 060409 602958
Arete 20L 	UK 5 060409 601739 EU 5 060409 601746	Arete 25L 	UK 5 060409 601760 EU 5 060409 601777
HEPA Filter 	UK/EU (10/12L) 5 060409 602965 UK/EU (20/25L) 5 060409 602736	Charcoal Filter 	UK/EU (10/12L) 5 060409 603023 UK/EU (20/25L) 5 060409 603009
Pump (20/25L only) 	UK/EU 5 060409 602774	Wall Bracket (10/12L only) 	UK 5 060409 603016



Designed in the UK

