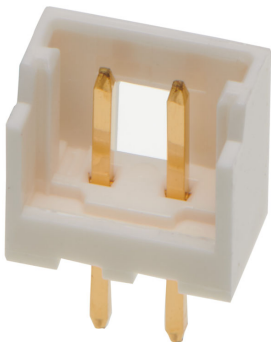




Part Number : [5026030270](#)
Product Description : 2.00mm Pitch, Micro-Latch PCB Header, Single Row, Vertical, Through Hole, Gold (Au) Plating, 2 Circuits, Tray
Series Number : 502603
Status : Active
Product Category : PCB Headers and Receptacles



Documents & Resources

Drawings

[Drawing 5026030270_sd.pdf](#)

3D Models and Design Files

[3D Model 5026030270_stp.zip](#)


Specifications

[Packaging Specification 5026039200-SPK-200.pdf](#)

[Product Specification 510650001-PS-000.pdf](#)

Product Environment Compliance

Compliance

GADSL/IMDS	Not Relevant
China RoHS	
EU ELV	Not Relevant
Low-Halogen Status	Not Low-Halogen per IEC 61249-2-21
REACH SVHC	Not Contained per D(2023)8585-DC (23 Jan 2024)
EU RoHS	Compliant per EU 2015/863

[Multiple Part Product Compliance Statements](#)

- Eu RoHS
- REACH SVHC
- Low-Halogen

[Multiple Part Industry Compliance Documents](#)

- IPC 1752A Class C
- IPC 1752A Class D
- Molex Product Compliance Declaration
- IEC-62474
- chemSHERPA (xml)

EU RoHS Certificate of Compliance

Part Details

General

Status	Active
Category	PCB Headers and Receptacles
Series	502603
Description	2.00mm Pitch, Micro-Latch PCB Header, Single Row, Vertical, Through Hole, Gold (Au) Plating, 2 Circuits, Tray
Application	Signal, Wire-to-Board
Component Type	PCB Header
Product Family	Micro-Latch Wire-to-Board Connector System
Product Name	Micro-Latch
UPC	800756695341

Electrical

Current - Maximum per Contact	2.0A
Voltage - Maximum	250V

Physical

Breakaway	No
Circuits (Loaded)	2
Circuits (maximum)	2
Color - Resin	Natural
Durability (mating cycles max)	30
First Mate / Last Break	No
Glow-Wire Capable	No
Lock to Mating Part	Yes
Material - Metal	Brass

Material - Plating Mating	Gold
Material - Resin	Polyamide
Net Weight	89.700/mg
Number of Rows	1
Orientation	Vertical
Packaging Type	Tray
PC Tail Length	3.50mm
PCB Locator	No
PCB Retention	Yes
PCB Thickness - Recommended	1.60mm
Pitch - Mating Interface	2.00mm
Plating min - Mating	0.100µm
Polarized to Mating Part	Yes
Polarized to PCB	No
Shrouded	Partial
Stackable	No
Temperature Range - Operating	-55° to +105°C
Termination Interface Style	Through Hole

Mates With / Use With

Mates with Part(s)

Description	Part Number
Micro-Latch Single Row Receptacle Housings	<u>51065</u>