

Design, Build, Maintain

Solutions for every stage of your product lifecycle & operations

multicomp^{PRO}

Magnetic Connectors, Kits and Cable Assemblies

Our range of Magnetic Connectors and Cable Assemblies include various orientations, colours, and lengths, lending themselves to endless applications and markets.

Blind & Self Mating

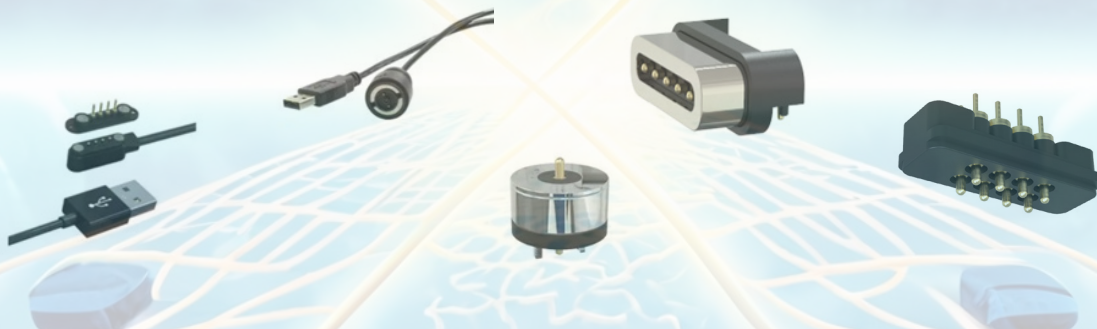
When the plug and socket are in close proximity the magnetic force creates an efficient and precise connection.

Ease of use & reliable

Due to the design, they are quickly and easily detachable, perfect for active environments or areas where accidental disconnection is possible.

Versatility & Safety

Suited to a wide range of applications and markets, available in varying sizes and formats. Safe, easy and convenient.









IP67 5A Circular 2 contact magnetic connectors & cables



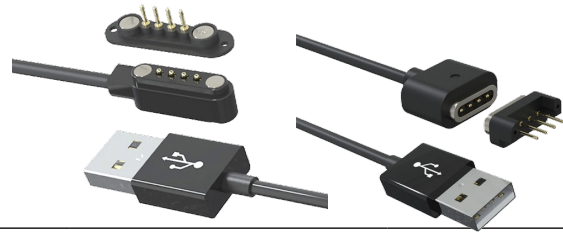
The MP magnetic connectors are a fantastic solution if you require a 2 contact connector which can be disconnected extremely quickly or used in an area where accidental damage to connectors or cables is likely. These magnetic connectors are designed for extra-low voltage applications such as battery charging and have a differentiating rated current of 5A at 30V AC/DC. The unique design also allows the connector to rotate a full 360 degrees without loss of the electrical connection.

*While the panel mount connector and cable connectors are individually IP67 rated, due to the design of the magnetic connector the connection itself is not waterproof.

Brand part number	Description	Image
MP002495	Magnetic Connector rotating 360 degrees. Panel Solder, Plug, Straight Contact: 2 contact Current Rating: 5.0A AWG Gauge: 18AWG Temperature Range: -20° / +70°	
MP002496	Magnetic Connector Assembly, rotating 360 degrees Cable End With Cable 2 m (6.6 ft) Contact: 2 contact Current Rating: 5.0A AWG Gauge: 18AWG Temperature Range: -20° / +70°	
MP002497	Magnetic Connector Assembly, rotating 360 degrees Cable End 90° With Cable 2m (6.6ft) Contact: 2 contact Current Rating: 5.0A AWG Gauge: 18AWG Temperature Range: -20° / +70°	
MP012103	Magnetic Connector Assembly, rotating 360 degrees USB-A Plug 90° With Cable 2m (6.6ft) • cable with braiding Contact: 2 contacts Current Rating: 5.0A AWG Gauge: 18AWG Temperature Range: -20° / +70°	
MP012104	Magnetic Connector Assembly, rotating 360 degrees USB-A Plug 90° With Cable 5m (16.4ft) • cable with braiding Contact: 2 contacts Current Rating: 5.0A AWG Gauge: 18AWG Temperature Range: -20° / +70°	

<p>MP012105</p>	<p>Magnetic Connector Assembly, rotating 360 degrees USB-A Plug With Cable 2m (6.6ft)</p> <ul style="list-style-type: none"> • cable with braiding <p>Contact: 2 contacts Current Rating: 5.0A AWG Gauge: 18AWG Temperature Range: -20° / +70°</p>		<p>1</p>
<p>MP012106</p>	<p>Magnetic Connector Assembly, rotating 360 degrees USB-A Plug With Cable 5m (16.4ft)</p> <ul style="list-style-type: none"> • cable with braiding <p>Contact: 2 contacts Current Rating: 5.0A AWG Gauge: 18AWG Temperature Range: -20° / +70°</p>		<p>2</p>
<p>MP009813</p>	<p>Dust Cap/Cover Rubber for 5A 2 Contacts Panel Solder</p> <p>Temperature Range: +100° IP Rating: IP 67</p>		<p>3</p>
<p>MP009810</p>	<p>Magnetic Connector Cable Assembly 360 degrees Panel Solder With cable 500 mm (19.69 inch)</p> <p>Contact: 2 contacts Current Rating: 5.0A AWG Gauge: 18AWG Temperature Range: -20° / +70°</p>		<p>4</p>
<p>MP009811</p>	<p>Magnetic Connector Assembly, rotating 360 degrees USB-A Plug With Cable 2 m</p> <p>Contact: 2 contacts Current Rating: 5.0A AWG Gauge: 18AWG Temperature Range: -20° / +70°</p>		
<p>MP009812</p>	<p>Magnetic Connector Assembly, rotating 360 degrees USB-A Plug 90° With Cable 2m</p> <p>Contact: 2 contacts Current Rating: 5.0A AWG Gauge: 18AWG Temperature Range: -20° / +70°</p>		

Rectangular connectors, cable assemblies & kits



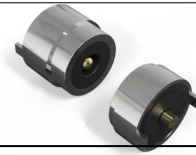
The Magnetic Cable Connector consists of a Male Magnetic pin cable and a Female Magnetic pin connector. Data and power can be transmitted through the attraction of male and female magnets. In other words, its use is relatively easy, simply bring both ends close to achieve magnetic force charging.

Part number		Description	Image	
MP009316	White	2 CONTACTS: • Magnetic Connector Cable Assembly, USB Type A Plug, Magnetic Plug, 1 A, 800 mm		
MP009328	Black			
MP009318	White	2 CONTACTS KIT: • Magnetic Connector Cable Assembly, USB Type A Plug, Magnetic Plug, 1 A, 800 mm ; • Magnetic Plug/Receptacle.		
MP009330	Black			
MP009319	White	3 CONTACTS: • Magnetic Connector Cable Assembly, USB Type A Plug, Magnetic Plug, 2 A, 1 m		
MP009331	Black			
MP009321	White	3 CONTACTS KIT: • Magnetic Connector Cable Assembly, USB Type A Plug, Magnetic Plug, 2 A, 1 m ; • Magnetic Plug/Receptacle.		
MP009333	Black			
MP009322	White	4 CONTACTS: • Magnetic Connector Cable Assembly, USB Type A Plug, Magnetic Plug, 1 A, 600 mm		
MP009334	Black			
MP009324	White	4 CONTACTS KIT: • Magnetic Connector Cable Assembly, USB Type A Plug, Magnetic 4 Position Plug, 1 A, 600 mm ; • Magnetic Plug/Receptacle.		
MP009336	Black			

MP011973	Black	5 CONTACTS: <ul style="list-style-type: none"> • Magnetic Connector Cable Assembly, USB Type A Plug, Magnetic Plug, 2 A, 2 m 			1
MP009325	White	7 CONTACTS: <ul style="list-style-type: none"> • Magnetic Connector Cable Assembly, USB Type A Plug, Magnetic Plug, 2 A, 1 m 			2
MP009337	Black				3
MP009327	White	7 CONTACTS KIT: <ul style="list-style-type: none"> • Magnetic Connector Cable Assembly, USB Type A Plug, Magnetic Plug, 2 A, 1 m; • Magnetic Plug/Receptacle. 			4
MP009339	Black				
Magnetic Connectors					
MP009317	White	2 CONTACTS RECEPTACLE: <ul style="list-style-type: none"> • Magnetic Connector Straight, 2.84 mm, 1 A 			
MP009329	Black				
MP011974	Black	2 CONTACTS PLUG: <ul style="list-style-type: none"> • Pogo Pin Magnetic Connector Straight, 2.84 mm, 1 A 			
MP009320	White	3 CONTACTS RECEPTACLE: <ul style="list-style-type: none"> • Runway Magnetic Connector Right Angle, 1.6 mm, 2 A 			
MP009332	Black				
MP011975	Black	3 CONTACTS PLUG: <ul style="list-style-type: none"> • Runway Magnetic Connector Right Angle, 1.6 mm, 2 A 			

MP009323	White	4 CONTACTS RECEPTACLE:			1
MP009335	Black	• Runway Magnetic Connector Straight , 2.54 mm, 1 A			2
MP011976	Black	4 CONTACTS PLUG: • Pogo Pin Magnetic Connector, Plug, Straight , 2.54 mm, 2 A			3
MP011979	Black	5 CONTACTS RECEPTACLE: • Runway Magnetic Connector, Straight , 2.54 mm, 2 A			4
MP011978	Black	5 CONTACTS PLUG: • Runway Magnetic Connector Right Angle , 2.54 mm, 2 A			
MP009326	White	7 CONTACTS RECEPTACLE:			
MP009338	Black	• Runway Magnetic Connector Right Angle , 1.6 mm, 2 A			
MP011977	Black	7 CONTACTS PLUG: • Runway Magnetic Connector Straight , 1.6 mm, 1 A			

Round Magnetic Power Connectors



Round magnetic connectors find widespread use across various industries including industrial automation, aerospace, drones, robotics, medicine, healthcare, sports bracelets, GPS trackers, smartwatches, and more. The robust magnetic connection they offer resists unintended disconnects, ensuring stable electrical connectivity. However, in the event of someone tripping on the cable, the connection disconnects automatically to protect the devices. These connectors offer convenience by eliminating the need for precise alignment; the male and female parts are effortlessly connected through magnetic attraction, effectively preventing misalignment.

Part number	Description	Image
MP011967	<p>2 CONTACTS:</p> <ul style="list-style-type: none"> • Magnetic Connector, Plug, Straight, 2 A, Spring Loaded, Version 2, Male 	
MP011968	<p>2 CONTACTS:</p> <ul style="list-style-type: none"> • Magnetic Connector, Receptacle, Straight, 2 A Spring Loaded, Version 2, Female 	
MP011969	<p>2 CONTACTS:</p> <ul style="list-style-type: none"> • Magnetic Connector, Plug, Straight, 1 A Spring Loaded, Version 3, Male 	
MP011970	<p>2 CONTACTS:</p> <ul style="list-style-type: none"> • Magnetic Connector, Receptacle, Straight, 1 A Spring Loaded, Version 3, Female 	
MP011971	<p>3 CONTACTS:</p> <ul style="list-style-type: none"> • Magnetic Connector, Plug, Straight, 2.2 mm, 1 A Spring Loaded, Male 	
MP011972	<p>3 CONTACTS:</p> <ul style="list-style-type: none"> • Magnetic Connector, Receptacle, Straight, 2.2 mm, 1 A Spring Loaded, Female 	

Magnetic Pogo Pin Connectors



Magnetic pogo pin connectors combine magnets with spring-loaded pins to establish both a secure attachment and an electrical connection between devices. The addition of spring-loaded pins enhances the stability of the connection and reduces the risk of disconnection due to vibration, movement, or accidental dislodgment. This makes magnetic pogo pin connectors more suitable for applications where a reliable and durable connection is required over time.

Brand part number	Description	Image
MP011980	6 CONTACTS: Spring Loaded, Plug , Straight, 6 mm, 3 A	
MP011981	6 CONTACTS: Spring Loaded, Receptacle , Straight, 6 mm, 3 A	
MP011982	8 CONTACTS: Spring Loaded, Plug , Straight, 2 mm, 1 A	
MP011983	8 CONTACTS: Spring Loaded, Receptacle , Straight, 2 mm, 1 A	

1

2

3

4