






Initial Setup

This chapter will show how to start with your LattePanda 3 Delta at the first time. It will demonstrate what you need and instructions to boot up LattePanda 3 Delta.

Booting the LattePanda

Preparations

Before booting your LattePanda 3 Delta, you will need the following accessories:

-  HDMI Cable
-  An External HDMI Monitor
-  Keyboard and a Mouse
-  A Power Adapter
-  A pair of WIFI/BT antennas

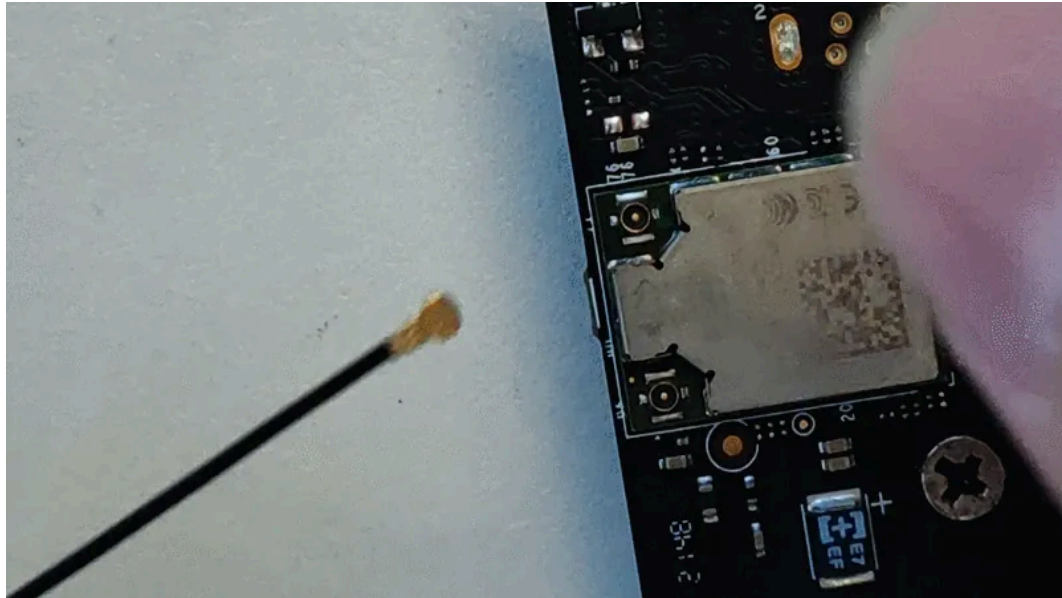
Instructions

Electrostatic Warning

While we have implemented anti-static design, please take care to eliminate static electricity from your body before handling the LattePanda. Failure to do so can lead to potential damage caused by static discharge.

- **Attach the Wi-Fi/BT antennas to the sockets.**
 - Antenna and socket spec - IPEX4 2.4 & 5G Dual-band.

- The wireless module features a pair of antenna sockets. One socket is specifically allocated for the purpose of 2.4GHz and 5GHz Wi-Fi connectivity, while the other socket serves the function of facilitating Bluetooth capabilities. Please insert the two antennas.
- Please refer to **Multiple Internet Connections** section for a list of compatible modules. If you don't need a wireless connection, you can skip this step.



Tip

You can purchase enhanced antennas to improve the WIFI and Bluetooth signal strength.

- **Connect an HDMI display.**

Please see the **Display Connections** section for instructions on using different displays with your LattePanda.

- **Connect the keyboard and mouse to LattePanda.**
- **Connect the power adapter(Provided) to LattePanda.**

Please see the **Powering Options** section for instructions on using different power adapters to power your LattePanda.

- **Press the power button and the blue LED indicator will light up.**

Wait approximately 30 seconds for the operating system to fully boot up. The default OS is windows 10.

 [Join our Discord](#)