

The Multicomp Pro Heavy-Duty Connector accessories



The **Multicomp Pro Heavy-Duty Connector** series is a full range of heavy-duty inserts, housings, crimps, and accessories. Created for applications that are subjected to harsh environments or where high vibration can cause standard connectors to fail makes these connectors ideal for food & beverage manufacturing, packaging machines, conveyor belt systems, railway, oil & gas processing, and other industrial automation. The entire range of connectors is RoHS compliant and as with all Multicomp Pro products, offers exceptional value for money.

Table of Contents:

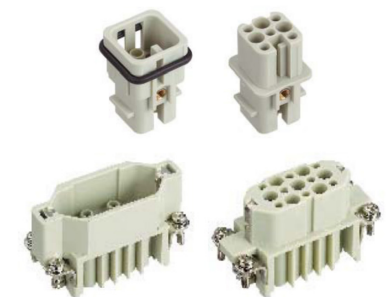
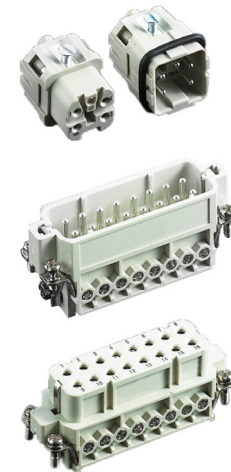
1. Inserts	2	4. Crimps	9
MP-HA Series	2	5A Crimps	9
MP-HD Series	2	10A Crimps	9
MP-HDD Series	3	16A Crimps	9
MP-HE Series	3	40A Crimps	10
MP-HEE Series	3	70A Crimps	10
MP-HK Series	4	100A Crimps	10
MP-HQ Series	4	200A Crimps	10
MP-HSB Series	4	5. Glands	11
2. Modular Inserts	5	Plastic Glands	11
MP-HM series	5	Metal Glands	11
3. Housing	6	6. Modular Frames	11
MP-H3A Series	6	MP-HF Series	11
MP-H3A.P Series	6		
MP-H6B Series	6		
MP-H10A Series	6		
MP-H10B Series	7		
MP-H16A Series	7		
MP-H16B Series	7		
MP-H24B Series	7		
MP-H32A Series	8		
MP-H32B Series	8		
MP-H48B Series	8		

Inserts

The Multicomp Pro Heavy-Duty Connector series is a full range of heavy-duty inserts, housings, crimps and accessories. The inserts are all made from Polycarbonate to industry standard sizes and are available in a choice of screw, crimp or spring clam terminations in a large variety of current ratings. Modular inserts are also offered allowing for maximum versatility when designing a system. These connectors have been created for applications that are subjected to harsh environments or where high vibration can cause standard connectors to fail. This makes them ideal for food & beverage manufacturing, packaging machines, conveyor belt systems, railway, oil & gas processing and other industrial automation. The entire range of connectors are RoHS compliant and as with all Multicomp Pro products, offer exceptional value for money.

Insert Series	Insert Style	Number of Poles	Gender	Current	Voltage	Termination		Crimps Required	Mates with	For Housing Series	Notes
						Crimp	Screw				
MP-HA Series	Compact	3	Female	10A	230/400V		MP009514		MP009515	MP-H3A	
MP-HA Series	Compact	3	Male	10A	230/400V		MP009515		MP009514	MP-H3A	
MP-HA Series	Compact	4	Female	10A	230/400V		MP009516		MP009517	MP-H3A	
MP-HA Series	Compact	4	Male	10A	230/400V		MP009517		MP009516	MP-H3A	
MP-HA Series	Compact	10	Female	16A	230/400V		MP009518		MP009519	MP-H10A	
MP-HA Series	Compact	10	Male	16A	230/400V		MP009519		MP009518	MP-H10A	
MP-HA Series	Compact	10	Female	16A	230/400V	MP009520		16A	MP009521	MP-H10A	
MP-HA Series	Compact	10	Male	16A	230/400V	MP009521		16A	MP009520	MP-H10A	
MP-HA Series	Compact	16	Female	16A	230/400V		MP009522		MP009523	MP-H16A	
MP-HA Series	Compact	16	Male	16A	230/400V		MP009523		MP009522	MP-H16A	
MP-HA Series	Compact	16	Female	16A	230/400V	MP009524		16A	MP009525	MP-H16A	
MP-HA Series	Compact	16	Male	16A	230/400V	MP009525		16A	MP009524	MP-H16A	
MP-HA Series	Compact	32	Female	16A	230/400V		MP009526		MP009527	MP-H32A	
MP-HA Series	Compact	32	Male	16A	230/400V		MP009527		MP009526	MP-H32A	
MP-HA Series	Compact	32	Female	16A	230/400V	MP009528		16A	MP009529	MP-H32A	
MP-HA Series	Compact	32	Male	16A	230/400V	MP009529		16A	MP009528	MP-H32A	

Insert Series	Insert Style	Number of Poles	Gender	Current	Voltage	Termination		Crimps Required	Mates with	For Housing Series	Notes
						Crimp	Screw				
MP-HD Series	Ultra-High Density	7	Female	10A	250V	MP009530		10A	MP009531	MP-H3A	
MP-HD Series	Ultra-High Density	7	Male	10A	250V	MP009531		10A	MP009530	MP-H3A	
MP-HD Series	Ultra-High Density	8	Female	10A	42V/120V	MP009532		10A	MP009533	MP-H3A	
MP-HD Series	Ultra-High Density	8	Male	10A	42V/120V	MP009533		10A	MP009532	MP-H3A	
MP-HD Series	Ultra-High Density	15	Female	10A	250V	MP009534		10A	MP009535	MP-H10A	
MP-HD Series	Ultra-High Density	15	Male	10A	250V	MP009535		10A	MP009534	MP-H10A	
MP-HD Series	Ultra-High Density	25	Female	10A	250V	MP009536		10A	MP009537	MP-H16A	
MP-HD Series	Ultra-High Density	25	Male	10A	250V	MP009537		10A	MP009536	MP-H16A	
MP-HD Series	Ultra-High Density	40	Female	10A	250V	MP009538		10A	MP009539	MP-H16A	
MP-HD Series	Ultra-High Density	40	Male	10A	250V	MP009539		10A	MP009538	MP-H16A	
MP-HD Series	Ultra-High Density	50	Female	10A	250V	MP009540		10A	MP009541	MP-H32A	
MP-HD Series	Ultra-High Density	50	Male	10A	250V	MP009541		10A	MP009540	MP-H32A	
MP-HD Series	Ultra-High Density	64	Female	10A	250V	MP009542		10A	MP009543	MP-H24B	
MP-HD Series	Ultra-High Density	64	Male	10A	250V	MP009543		10A	MP009542	MP-H24B	
MP-HD Series	Ultra-High Density	80	Female	10A	250V	MP009544		10A	MP009545	MP-H32B	
MP-HD Series	Ultra-High Density	80	Male	10A	250V	MP009545		10A	MP009544	MP-H32B	
MP-HD Series	Ultra-High Density	128	Female	10A	250V	MP009546		10A	MP009547	MP-H48B	
MP-HD Series	Ultra-High Density	128	Male	10A	250V	MP009547		10A	MP009546	MP-H48B	

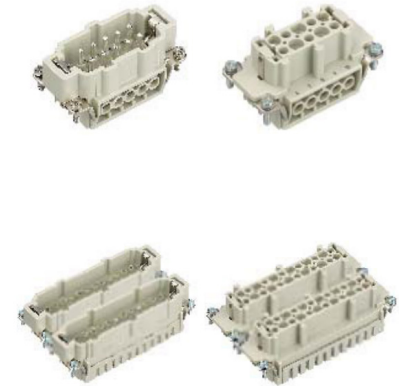


Inserts

Insert Series	Insert Style	Number of Poles	Gender	Current	Voltage	Termination		Crimps Required	Mates with	For Housing Series	Notes
						Crimp	Screw				
MP-HDD Series	Ultra-High Density	24	Female	10A	250V	MP009548		10A	MP009549	MP-H6B	
MP-HDD Series	Ultra-High Density	24	Male	10A	250V	MP009549		10A	MP009548	MP-H6B	
MP-HDD Series	Ultra-High Density	42	Female	10A	250V	MP009550		10A	MP009551	MP-H10B	
MP-HDD Series	Ultra-High Density	42	Male	10A	250V	MP009551		10A	MP009550	MP-H10B	
MP-HDD Series	Ultra-High Density	72	Female	10A	250V	MP009552		10A	MP009553	MP-H16B	
MP-HDD Series	Ultra-High Density	72	Male	10A	250V	MP009553		10A	MP009552	MP-H16B	
MP-HDD Series	Ultra-High Density	108	Female	10A	250V	MP009554		10A	MP009555	MP-H32B	
MP-HDD Series	Ultra-High Density	108	Male	10A	250V	MP009555		10A	MP009554	MP-H32B	
MP-HDD Series	Ultra-High Density	144	Female	10A	250V	MP009556		10A	MP009557	MP-H32B	
MP-HDD Series	Ultra-High Density	144	Male	10A	250V	MP009557		10A	MP009556	MP-H32B	
MP-HDD Series	Ultra-High Density	216	Female	10A	250V	MP009558		10A	MP009559	MP-H48B	
MP-HDD Series	Ultra-High Density	216	Male	10A	250V	MP009559		10A	MP009558	MP-H48B	



Insert Series	Insert Style	Number of Poles	Gender	Current	Voltage	Termination		Crimps Required	Mates with	For Housing Series	Notes
						Crimp	Screw				
MP-HE Series	Standard	6	Female	16A	500V		MP009560		MP009561	MP-H6B	
MP-HE Series	Standard	6	Male	16A	500V		MP009561		MP009560	MP-H6B	
MP-HE Series	Standard	6	Female	16A	500V	MP009562		16A	MP009563	MP-H6B	
MP-HE Series	Standard	6	Male	16A	500V	MP009563		16A	MP009562	MP-H6B	
MP-HE Series	Standard	10	Female	16A	500V		MP009564		MP009565	MP-H10B	
MP-HE Series	Standard	10	Male	16A	500V		MP009565		MP009564	MP-H10B	
MP-HE Series	Standard	10	Female	16A	500V	MP009566		16A	MP009567	MP-H10B	
MP-HE Series	Standard	10	Male	16A	500V	MP009567		16A	MP009566	MP-H10B	
MP-HE Series	Standard	16	Female	16A	500V		MP009568		MP009569	MP-H16B	
MP-HE Series	Standard	16	Male	16A	500V		MP009569		MP009568	MP-H16B	
MP-HE Series	Standard	16	Female	16A	500V	MP009570		16A	MP009571	MP-H16B	
MP-HE Series	Standard	16	Male	16A	500V	MP009571		16A	MP009570	MP-H16B	
MP-HE Series	Standard	24	Female	16A	500V		MP009572		MP009573	MP-H24B	
MP-HE Series	Standard	24	Male	16A	500V		MP009573		MP009572	MP-H24B	
MP-HE Series	Standard	24	Female	16A	500V	MP009574		16A	MP009575	MP-H24B	
MP-HE Series	Standard	24	Male	16A	500V	MP009575		16A	MP009574	MP-H24B	
MP-HE Series	Standard	32	Female	16A	500V		MP009576		MP009577	MP-H32B	
MP-HE Series	Standard	32	Male	16A	500V		MP009577		MP009576	MP-H32B	
MP-HE Series	Standard	32	Female	16A	500V	MP009578		16A	MP009579	MP-H32B	
MP-HE Series	Standard	32	Male	16A	500V	MP009579		16A	MP009578	MP-H32B	
MP-HE Series	Standard	48	Female	16A	500V		MP009580		MP009581	MP-H48B	
MP-HE Series	Standard	48	Male	16A	500V		MP009581		MP009580	MP-H48B	
MP-HE Series	Standard	48	Female	16A	500V	MP009582		16A	MP009583	MP-H48B	
MP-HE Series	Standard	48	Male	16A	500V	MP009583		16A	MP009582	MP-H48B	



Insert Series	Insert Style	Number of Poles	Gender	Current	Voltage	Termination		Crimps Required	Mates with	For Housing Series	Notes
						Crimp	Screw				
MP-HEE Series	High Density	10	Female	16A	500V	MP009584		16A	MP009585	MP-H6B	
MP-HEE Series	High Density	10	Male	16A	500V	MP009585		16A	MP009584	MP-H6B	
MP-HEE Series	High Density	18	Female	16A	500V	MP009586		16A	MP009587	MP-H10B	
MP-HEE Series	High Density	18	Male	16A	500V	MP009587		16A	MP009586	MP-H10B	
MP-HEE Series	High Density	32	Female	16A	500V	MP009588		16A	MP009589	MP-H16B	
MP-HEE Series	High Density	32	Male	16A	500V	MP009589		16A	MP009588	MP-H16B	
MP-HEE Series	High Density	46	Female	16A	500V	MP009590		16A	MP009591	MP-H24B	
MP-HEE Series	High Density	46	Male	16A	500V	MP009591		16A	MP009590	MP-H24B	
MP-HEE Series	High Density	64	Female	16A	500V	MP009592		16A	MP009593	MP-H32B	
MP-HEE Series	High Density	64	Male	16A	500V	MP009593		16A	MP009592	MP-H32B	
MP-HEE Series	High Density	92	Female	16A	500V	MP009594		16A	MP009595	MP-H48B	
MP-HEE Series	High Density	92	Male	16A	500V	MP009595		16A	MP009594	MP-H48B	



Inserts

Insert Series	Insert Style	Number of Poles	Gender	Current	Voltage	Termination		Crimps Required	Mates with	For Housing Series	Notes
						Crimp	Screw				
MP-HK Series	Combination/Hybrid	4	Female	80A	830V		MP009596		MP009597	MP-H16B	
MP-HK Series	Combination/Hybrid	4	Male	80A	830V		MP009597		MP009596	MP-H16B	
MP-HK Series	Combination/Hybrid	4+2	Female	80A/16A	830V/400V		MP009598		MP009599	MP-H16B	
MP-HK Series	Combination/Hybrid	4+2	Male	80A/16A	830V/400V		MP009599		MP009598	MP-H16B	
MP-HK Series	Combination/Hybrid	4+8	Female	80A/16A	830V/400V		MP009600		MP009601	MP-H16B	
MP-HK Series	Combination/Hybrid	4+8	Male	80A/16A	830V/400V		MP009601		MP009600	MP-H16B	
MP-HK Series	Combination/Hybrid	6+12	Female	40A/10A	690V/400V			40A/10A	MP009603	MP-H16B	Cable Diameter 2.5-8mm ²
MP-HK Series	Combination/Hybrid	6+12	Male	40A/10A	690V/400V			40A/10A	MP009602	MP-H16B	Cable Diameter 2.5-8mm ²
MP-HK Series	Combination/Hybrid	6+12	Female	40A/10A	690V/400V			40A/10A	MP009605	MP-H16B	Cable Diameter 6-10mm ²
MP-HK Series	Combination/Hybrid	6+12	Male	40A/10A	690V/400V			40A/10A	MP009604	MP-H16B	Cable Diameter 6-10mm ²
MP-HK Series	Combination/Hybrid	6+6	Female	100A/16A	690V/400V		MP009606		MP009607	MP-H16B	
MP-HK Series	Combination/Hybrid	6+6	Male	100A/16A	690V/400V		MP009607		MP009606	MP-H16B	
MP-HK Series	Combination/Hybrid	6+6	Female	40A/16A	690V/400V		MP009608		MP009609	MP-H16B	
MP-HK Series	Combination/Hybrid	6+6	Male	40A/16A	690V/400V		MP009609		MP009608	MP-H16B	
MP-HK Series	Combination/Hybrid	6+36	Female	40A/10A	690V/160V		MP009610		MP009611	MP-H16B	
MP-HK Series	Combination/Hybrid	6+36	Male	40A/10A	690V/160V		MP009611		MP009610	MP-H16B	
MP-HK Series	Combination/Hybrid	8	Female	100A	690V		MP009612		MP009613	MP-H16B	
MP-HK Series	Combination/Hybrid	8	Male	100A	690V		MP009613		MP009612	MP-H16B	
MP-HK Series	Combination/Hybrid	8+24	Female	16A/10A	400V/160V		MP009614		MP009615	MP-H16B	
MP-HK Series	Combination/Hybrid	8+24	Male	16A/10A	400V/160V		MP009615		MP009614	MP-H16B	
MP-HK Series	Combination/Hybrid	12+2	Female	40A/10A	690V/250V		MP009616		MP009617	MP-H16B	
MP-HK Series	Combination/Hybrid	12+2	Male	40A/10A	690V/250V		MP009617		MP009616	MP-H16B	



Insert Series	Insert Style	Number of Poles	Gender	Current	Voltage	Termination		Crimps Required	Mates with	For Housing Series	Notes
						Crimp	Screw				
MP-HQ Series	Compact	5	Female	16A	400V		MP009618	16A	MP009619	MP-H3A	
MP-HQ Series	Compact	5	Male	16A	400V		MP009619	16A	MP009618	MP-H3A	
MP-HQ Series	Compact	7	Female	10A	400V		MP009620	10A	MP009621	MP-H3A	
MP-HQ Series	Compact	7	Male	10A	400V		MP009621	10A	MP009620	MP-H3A	
MP-HQ Series	Compact	12	Female	10A	400V		MP009622	10A	MP009623	MP-H3A	
MP-HQ Series	Compact	12	Male	10A	400V		MP009623	10A	MP009622	MP-H3A	



Insert Series	Insert Style	Number of Poles	Gender	Current	Voltage	Termination		Crimps Required	Mates with	For Housing Series	Notes
						Crimp	Screw				
MP-HSB Series	Heavy current	6	Female	35A	400V		MP009624		MP009625	MP-H16B	
MP-HSB Series	Heavy current	6	Male	35A	400V		MP009625		MP009624	MP-H16B	
MP-HSB Series	Heavy current	12	Female	35A	400V		MP009626		MP009627	MP-H32B	
MP-HSB Series	Heavy current	12	Male	35A	400V		MP009627		MP009626	MP-H32B	



Modular Inserts

Insert Series	Insert Style	Number of Poles	Gender	Current	Voltage	Termination		Crimps Required	Mates with	Module Gaps Required	For Modular Frame	Notes
						Crimp	Screw					
MP-HM Series	Modular	1	Female	100A	830V	MP009466		100A	MP009467	1	MP-HM Series Frames	
MP-HM Series	Modular	1	Male	100A	830V	MP009467		100A	MP009466	1	MP-HM Series Frames	
MP-HM Series	Modular	1	Female	200A	1000V	MP009468		200A	MP009469	2	MP-HM Series Frames	
MP-HM Series	Modular	1	Male	200A	1000V	MP009469		200A	MP009468	2	MP-HM Series Frames	
MP-HM Series	Modular	1	Female	200A	1000V		MP009470		MP009471	2	MP-HM Series Frames	Cable Diameter 25-40mm ²
MP-HM Series	Modular	1	Male	200A	1000V		MP009471		MP009470	2	MP-HM Series Frames	Cable Diameter 25-40mm ²
MP-HM Series	Modular	1	Female	200A	1000V		MP009472		MP009473	2	MP-HM Series Frames	Cable Diameter 40-70mm ²
MP-HM Series	Modular	1	Male	200A	1000V		MP009473		MP009472	2	MP-HM Series Frames	Cable Diameter 40-70mm ²
MP-HM Series	Modular	2	Female	70A	1000V	MP009474		70A	MP009475	1	MP-HM Series Frames	
MP-HM Series	Modular	2	Male	70A	1000V	MP009475		70A	MP009474	1	MP-HM Series Frames	
MP-HM Series	Modular	2	Female	70A	1000V		MP009476		MP009477	1	MP-HM Series Frames	Cable Diameter 6-16mm ²
MP-HM Series	Modular	2	Male	70A	1000V		MP009477		MP009476	1	MP-HM Series Frames	Cable Diameter 6-16mm ²
MP-HM Series	Modular	2	Female	70A	1000V		MP009478		MP009479	1	MP-HM Series Frames	Cable Diameter 14-22mm ²
MP-HM Series	Modular	2	Male	70A	1000V		MP009479		MP009478	1	MP-HM Series Frames	Cable Diameter 14-22mm ²
MP-HM Series	Modular	2	Female	100A	1000V	MP009480		100A	MP009481	2	MP-HM Series Frames	
MP-HM Series	Modular	2	Male	100A	1000V	MP009481		100A	MP009480	2	MP-HM Series Frames	
MP-HM Series	Modular	2	Female	100A	1000V		MP009482		MP009483	2	MP-HM Series Frames	Cable Diameter 10-25mm ²
MP-HM Series	Modular	2	Male	100A	1000V		MP009483		MP009482	2	MP-HM Series Frames	Cable Diameter 10-25mm ²
MP-HM Series	Modular	2	Female	100A	1000V		MP009484		MP009485	2	MP-HM Series Frames	Cable Diameter 16-35mm ²
MP-HM Series	Modular	2	Male	100A	1000V		MP009485		MP009484	2	MP-HM Series Frames	Cable Diameter 16-35mm ²
MP-HM Series	Modular	2	Female	40A	1000V	MP009486		40A	MP009487	1	MP-HM Series Frames	
MP-HM Series	Modular	2	Male	40A	1000V	MP009487		40A	MP009486	1	MP-HM Series Frames	
MP-HM Series	Modular	2	Female	40A	1000V		MP009488		MP009489	1	MP-HM Series Frames	Cable Diameter 2.5-8mm ²
MP-HM Series	Modular	2	Male	40A	1000V		MP009489		MP009488	1	MP-HM Series Frames	Cable Diameter 2.5-8mm ²
MP-HM Series	Modular	2	Female	40A	1000V		MP009490		MP009491	1	MP-HM Series Frames	Cable Diameter 6-10mm ²
MP-HM Series	Modular	2	Male	40A	1000V		MP009491		MP009490	1	MP-HM Series Frames	Cable Diameter 6-10mm ²
MP-HM Series	Modular	3	Female	40A	690V		MP009492		MP009493	1	MP-HM Series Frames	Cable Diameter 2.5-8mm ²
MP-HM Series	Modular	3	Male	40A	690V		MP009493		MP009492	1	MP-HM Series Frames	Cable Diameter 2.5-8mm ²
MP-HM Series	Modular	3	Female	40A	690V		MP009494		MP009495	1	MP-HM Series Frames	Cable Diameter 6-10mm ²
MP-HM Series	Modular	3	Male	40A	690V		MP009495		MP009494	1	MP-HM Series Frames	Cable Diameter 6-10mm ²
MP-HM Series	Modular	3+4	Female	40A/10A	830V	MP009496		40A & 10A	MP009497	1	MP-HM Series Frames	
MP-HM Series	Modular	3+4	Male	40A/10A	830V	MP009497		40A & 10A	MP009496	1	MP-HM Series Frames	
MP-HM Series	Modular	4	Female	40A	830V	MP009498		40A	MP009499	1	MP-HM Series Frames	
MP-HM Series	Modular	4	Male	40A	830V	MP009499		40A	MP009498	1	MP-HM Series Frames	
MP-HM Series	Modular	6	Female	16A	830V	MP009500		16A	MP009501	1	MP-HM Series Frames	
MP-HM Series	Modular	6	Male	16A	830V	MP009501		16A	MP009500	1	MP-HM Series Frames	
MP-HM Series	Modular	6	Female	16A	500V	MP009502		16A	MP009503	1	MP-HM Series Frames	
MP-HM Series	Modular	6	Male	16A	500V	MP009503		16A	MP009502	1	MP-HM Series Frames	
MP-HM Series	Modular	8	Female	16A	400V	MP009504		16A	MP009505	1	MP-HM Series Frames	
MP-HM Series	Modular	8	Male	16A	400V	MP009505		16A	MP009504	1	MP-HM Series Frames	
MP-HM Series	Modular	12	Female	10A	250V	MP009506		10A	MP009507	1	MP-HM Series Frames	
MP-HM Series	Modular	12	Male	10A	250V	MP009507		10A	MP009506	1	MP-HM Series Frames	
MP-HM Series	Modular	15	Female	5A	50V	MP009508		5A	MP009509	1	MP-HM Series Frames	15 pole D-Sub (VGA)
MP-HM Series	Modular	15	Male	5A	50V	MP009509		5A	MP009508	1	MP-HM Series Frames	15 pole D-Sub (VGA)
MP-HM Series	Modular	20	Female	16A	500V	MP009510		16A	MP009511	2	MP-HM Series Frames	
MP-HM Series	Modular	20	Male	16A	500V	MP009511		16A	MP009510	2	MP-HM Series Frames	
MP-HM Series	Modular	25	Female	4A	50V	MP009512		5A	MP009513	1	MP-HM Series Frames	5A crimps are used but rated to 4A at 50V
MP-HM Series	Modular	25	Male	4A	50V	MP009513		5A	MP009512	1	MP-HM Series Frames	5A crimps are used but rated to 4A at 50V



Housing

The Multicomp Pro Heavy-Duty Connector series is a full range of heavy-duty inserts, housings, crimps and accessories. The housing is produced from corrosion resistant, powder coated, die cast Aluminium with locking levers made from galvanized Iron. These are available in standard or tall variations with both single and double locking options and offer IP65 protection. Created for applications that are subjected to harsh environments or where high vibration can cause standard connectors to fail makes these connectors ideal for food & beverage manufacturing, packaging machines, conveyor belt systems, railway, oil & gas processing and other industrial automation. The entire range of connectors are RoHS compliant and as with all Multicomp Pro products, offer exceptional value for money.

Housing Series	Style Description	Style		Locking Lever	Locking pins	Number of Glands/ Openings	Gland Size
		Base	Cable to Cable (Mates hood) Hood				
MP-3A Series	MP-H3A Bulkhead Mount 1 Locking Lever	MP009340		1		N/A	N/A
MP-3A Series	MP-H3A Bulkhead Mount 1 Locking Lever Locking Cover for Female Insert	MP009341		1		N/A	N/A
MP-3A Series	MP-H3A Bulkhead Mount 1 Locking Lever Locking Cover for Male Insert	MP009342		1		N/A	N/A
MP-3A Series	MP-H3A Bulkhead Mount Side Entry 1 Locking Lever	MP009343		1		N/A	N/A
MP-3A Series	MP-H3A Surface Mount 1 Locking Lever M20	MP009344		1		1	M20
MP-3A Series	MP-H3A Cable to Cable 1 Locking Lever M20		MP009345	1		1	M20
MP-3A Series	MP-H3A Top Entry Hood 2 Locking Points M20				MP009346	2	1
MP-3A Series	MP-H3A Side Entry Hood 2 Locking Points M20				MP009347	2	1

If locking lever = 1 then it mates with products where locking pins = 2



Housing Series	Style Description	Style		Locking Lever	Locking pins	Number of Glands/ Openings	Gland Size
		Base	Cable to Cable (Mates hood) Hood				
MP-3A.P Series	MP-H3A Plastic Bulkhead Mount 1 Locking Lever	MP009348		1		N/A	N/A
MP-3A.P Series	MP-H3A Plastic Bulkhead Mount Side Entry 1 Locking Lever	MP009349		1		N/A	N/A
MP-3A.P Series	MP-H3A Plastic Surface Mount 1 Locking Lever M20	MP009350		1		1	M20
MP-3A.P Series	MP-H3A Plastic Cable to Cable 1 Locking Lever M20		MP009351	1		1	M20
MP-3A.P Series	MP-H3A Plastic Top Entry Hood 2 Locking Points M20				MP009352	2	1
MP-3A.P Series	MP-H3A Plastic Side Entry Hood 2 Locking Points M20				MP009353	2	1

If locking lever = 1 then it mates with products where locking pins = 2



Housing Series	Style Description	Style		Locking Lever	Locking pins	Number of Glands/ Openings	Gland Size
		Base	Cable to Cable (Mates hood) Hood				
MP-6B Series	MP-H6B Bulkhead Mount 1 Locking Lever	MP009354		1		N/A	N/A
MP-6B Series	MP-H6B Bulkhead Mount 1 Locking Lever with Plastic Cover	MP009355		1		N/A	N/A
MP-6B Series	MP-H6B Surface Mount 1 Locking Lever 2xM20	MP009356		1		2	M20
MP-6B Series	MP-H6B Surface Mount 1 Locking Lever M20	MP009357		1		1	M20
MP-6B Series	MP-H6B Surface Mount 1 Locking Lever 2xM20 with Plastic Cover	MP009358		1		2	M20
MP-6B Series	MP-H6B Surface Mount 1 Locking Lever M20 with Plastic Cover	MP009359		1		1	M20
MP-6B Series	MP-H6B Surface Mount High 1 Locking Lever 2xM25	MP009360		1		2	M25
MP-6B Series	MP-H6B Surface Mount High 1 Locking Lever M25	MP009361		1		1	M25
MP-6B Series	MP-H6B Surface Mount High 1 Locking Lever 2xM25 with Plastic Cover	MP009362		1		2	M25
MP-6B Series	MP-H6B Surface Mount High 1 Locking Lever M25 with Plastic Cover	MP009363		1		1	M25
MP-6B Series	MP-H6B Cable to Cable 1 Locking lever M20		MP009364	1		1	M20
MP-6B Series	MP-H6B Cable to Cable High 1 Locking lever M25		MP009365	1		1	M25
MP-6B Series	MP-H6B Top Entry Hood 2 Locking Points M20				MP009366	2	1
MP-6B Series	MP-H6B Top Entry High Hood 2 Locking Points M25				MP009367	2	1
MP-6B Series	MP-H6B Side Entry Hood 2 Locking Points M25				MP009368	2	1
MP-6B Series	MP-H6B Side Entry High Hood 2 Locking Points M25				MP009369	2	1

If locking lever = 1 then it mates with products where locking pins = 2



Housing Series	Style Description	Style		Locking Lever	Locking pins	Number of Glands/ Openings	Gland Size
		Base	Cable to Cable (Mates hood) Hood				
MP-10A Series	MP-H10A Bulkhead Mount 1 locking Lever	MP009370		1		N/A	N/A
MP-10A Series	MP-H10A Bulkhead Mount 1 locking Lever with Plastic Cover	MP009371		1		N/A	N/A
MP-10A Series	MP-H10A Surface Mount 1 locking lever 2xM20	MP009372		1		2	M20
MP-10A Series	MP-H10A Surface Mount 1 locking lever M25	MP009373		1		1	M25
MP-10A Series	MP-H10A Surface Mount 1 locking lever 2xM20 with Plastic Cover	MP009374		1		2	M20
MP-10A Series	MP-H10A Surface Mount 1 locking lever M25 with Plastic Cover	MP009375		1		1	M25
MP-10A Series	H10 Top Entry Hood 2 Locking Points M20				MP009376	2	1
MP-10A Series	H10 Top Entry High Hood 2 Locking Points M25				MP009377	2	1
MP-10A Series	MP-H10A Side Entry Hood 2 Locking Points M20				MP009378	2	1

If locking lever = 1 then it mates with products where locking pins = 2



Housing

Housing Series	Style Description	Style			Locking Lever	Locking pins	Number of Glands/ Openings	Gland Size
		Base	Cable to Cable (Mates hood)	Hood				
MP-10B Series	MP-H10B Bulkhead Mount 1 Locking Lever	MP009380			1		N/A	N/A
MP-10B Series	MP-H10B Bulkhead Mount 1 Locking Lever with Plastic Cover	MP009381			1		N/A	N/A
MP-10B Series	MP-H10B Surface Mount 1 Locking Lever 2xM20	MP009382			1		2	M20
MP-10B Series	MP-H10B Surface Mount 1 Locking Lever M25	MP009383			1		1	M25
MP-10B Series	MP-H10B Surface Mount 1 Locking Lever 2xM20 with Plastic Cover	MP009384			1		1	M20
MP-10B Series	MP-H10B Surface Mount 1 Locking Lever M25 with Plastic Cover	MP009385			1		1	M25
MP-10B Series	MP-H10B Surface Mount High 1 Locking Lever 2xM25	MP009386			1		2	M25
MP-10B Series	MP-H10B Surface Mount High 1 Locking Lever M32	MP009387			1		1	M32
MP-10B Series	MP-H10B Surface Mount High 1 Locking Lever 2xM25 with Plastic Cover	MP009388			1		2	M25
MP-10B Series	MP-H10B Surface Mount High 1 Locking Lever M32 with Plastic Cover	MP009389			1		1	M32
MP-10B Series	MP-H10B Cable to Cable 1 Locking Lever M20		MP009390		1		1	M20
MP-10B Series	MP-H10B Cable to Cable High 1 Locking Lever M32		MP009391		1		1	M32
MP-10B Series	MP-H10B Top Entry Hood 2 Locking Points M25			MP009392		2	1	M25
MP-10B Series	MP-H10B Top Entry High Hood 2 Locking Points M32			MP009393		2	1	M32
MP-10B Series	MP-H10B Side Entry Hood 2 Locking Points M25			MP009394		2	1	M25
MP-10B Series	MP-H10B Side Entry High Hood 2 Locking Points M32			MP009395		2	1	M32
Housing Series	Style Description	Base	Cable to Cable (Mates hood)	Hood	Locking Lever	Locking pins	Number of Glands/ Openings	Gland Size
MP-16A Series	MP-H16A Bulkhead Mount 1 Locking Lever	MP009396			1		N/A	N/A
MP-16A Series	MP-H16A Bulkhead Mount 1 Locking Lever with Plastic Cover	MP009397			1		N/A	N/A
MP-16A Series	MP-H16A Surface Mount 1 Locking Lever 2xM25	MP009398			1		2	M25
MP-16A Series	MP-H16A Surface Mount 1 Locking Lever 2xM25 with Plastic Cover	MP009400			1		2	M25
MP-16A Series	MP-H16A Surface Mount 1 Locking Lever M25 with Plastic Cover	MP009401			1		1	M25
MP-16A Series	MP-H16A Top Entry Hood 2 Locking Points M20			MP009402		2	1	M20
MP-16A Series	MP-H16A Top Entry High Hood 2 Locking Points M25			MP009403		2	1	M25
MP-16A Series	MP-H16A Side Entry Hood 2 Locking Points M20			MP009404		2	1	M20
MP-16A Series	MP-H16A Side Entry High Hood 2 Locking Points M25			MP009405		2	1	M25
Housing Series	Style Description	Base	Cable to Cable (Mates hood)	Hood	Locking Lever	Locking pins	Number of Glands/ Openings	Gland Size
MP-16B Series	MP-H16B Bulkhead Mount 2 Locking Lever	MP009406			2		N/A	N/A
MP-16B Series	MP-H16B Surface Mount 2 Locking Lever 2xM25	MP009407			2		2	M25
MP-16B Series	MP-H16B Surface Mount 2 Locking Lever M25	MP009408			2		1	M25
MP-16B Series	MP-H16B Surface Mount High 2 Locking Lever 2xM32	MP009409			2		2	M32
MP-16B Series	MP-H16B Surface Mount High 2 Locking Lever M32	MP009410			2		1	M32
MP-16B Series	MP-H16B Cable to Cable 2 Locking Lever M32		MP009411		2		1	M32
MP-16B Series	MP-H16B Cable to Cable High 2 Locking Lever M32		MP009412		2		1	M32
MP-16B Series	MP-H16B Top Entry Hood 4 Locking Points M32			MP009413		4	1	M32
MP-16B Series	MP-H16B Top Entry High Hood 4 Locking Points M40			MP009414		4	1	M40
MP-16B Series	MP-H16B Side Entry Hood 4 Locking Points M25			MP009415		4	1	M25
MP-16B Series	MP-H16B Side Entry High Hood 4 Locking Points M40			MP009416		4	1	M40
Housing Series	Style Description	Base	Cable to Cable (Mates hood)	Hood	Locking Lever	Locking pins	Number of Glands/ Openings	Gland Size
MP-24B Series	MP-H24B Bulkhead Mount 1 Locking Lever	MP009417			1		N/A	N/A
MP-24B Series	MP-H24B Bulkhead Mount 1 Locking Lever with Plastic Cover	MP009418			1		N/A	N/A
MP-24B Series	MP-H24B Surface Mount 1 Locking Lever 2xM25	MP009419			1		2	M25
MP-24B Series	MP-H24B Surface Mount 1 Locking Lever M25	MP009420			1		1	M25
MP-24B Series	MP-H24B Surface Mount 1 Locking Lever 2xM25 with Plastic Hood	MP009421			1		2	M25
MP-24B Series	MP-H24B Surface Mount 1 Locking Lever M25 with Plastic Hood	MP009422			1		1	M25
MP-24B Series	MP-H24B Surface Mount High 1 Locking Lever 2xM32	MP009423			1		2	M32
MP-24B Series	MP-H24B Surface Mount High 1 Locking Lever M32	MP009424			1		1	M32
MP-24B Series	MP-H24B Surface Mount High 1 Locking Lever 2xM32 with Plastic Hood	MP009425			1		2	M32
MP-24B Series	MP-H24B Surface Mount High 1 Locking Lever M32 with Plastic Hood	MP009426			1		1	M32
MP-24B Series	MP-H24B Cable to Cable 1 Locking Lever M32		MP009427		1		1	M32
MP-24B Series	MP-H24B Cable to Cable High 1 Locking Lever M40		MP009428		1		1	M40
MP-24B Series	MP-H24B Top Entry Hood 2 Locking Points M25			MP009429		2	2	M25
MP-24B Series	MP-H24B Top Entry High Hood 2 Locking Points M32			MP009430		2	2	M32
MP-24B Series	MP-H24B Side Entry Hood 2 Locking Points M32			MP009431		2	2	M32
MP-24B Series	MP-H24B Side Entry High Hood 2 Locking Points M32			MP009432		2	2	M32

If locking lever = 1 then it mates with products where locking pins = 2



If locking lever = 1 then it mates with products where locking pins = 2



If locking lever = 1 then it mates with products where locking pins = 2



If locking lever = 1 then it mates with products where locking pins = 2



Housing

Housing Series	Style Description	Style			Locking Lever	Locking pins	Number of Glands/ Openings	Gland Size
		Base	Cable to Cable (Mates hood)	Hood				
MP-32A Series	MP-H32A Bulkhead Mount 2 Locking Levers	MP009433			2		N/A	N/A
MP-32A Series	MP-H32A Surface Mount 2 Locking Levers 2xM32	MP009434			2		2	M32
MP-32A Series	MP-H32A Surface Mount 2 Locking Levers M32	MP009435			2		1	M32
MP-32A Series	MP-H32A Top Entry High Hood 4 Locking Points M32			MP009436		4	1	M32
MP-32A Series	MP-H32A Side Entry Hood 4 Locking Points M25			MP009437		4	1	M25
MP-32A Series	MP-H32A Side Entry High Hood 4 Locking Points M32			MP009438		4	1	M32
Housing Series	Style Description	Style			Locking Lever	Locking pins	Number of Glands/ Openings	Gland Size
		Base	Cable to Cable (Mates hood)	Hood				
MP-32B Series	MP-H32B Bulkhead 2 Locking Lever	MP009439			2		N/A	N/A
MP-32B Series	MP-H32B Surface Mount 2 Locking Lever 2xM32	MP009440			2		2	M32
MP-32B Series	MP-H32B Surface Mount 2 Locking Lever M40	MP009441			2		1	M40
MP-32B Series	MP-H32B Cable to Cable 2 Locking Levers M40		MP009442		2		1	M40
MP-32B Series	MP-H32B Top Entry Hood 4 Locking Points M40			MP009443		4	1	M40
MP-32B Series	MP-H32B Side Entry Hood 4 Locking Points M40			MP009444		4	1	M40
Housing Series	Style Description	Style			Locking Lever	Locking pins	Number of Glands/ Openings	Gland Size
		Base	Cable to Cable (Mates hood)	Hood				
MP-48B Series	MP-H48B Bulkhead Mount 1 Locking Lever	MP009445			1		N/A	N/A
MP-48B Series	MP-H48B Bulkhead Mount 1 Locking Lever with Plastic Cover	MP009446			1		N/A	N/A
MP-48B Series	MP-H48B Surface Mount 1 Locking Lever 2xM32	MP009447			1		2	M32
MP-48B Series	MP-H48B Surface Mount 1 Locking Lever M40	MP009448			1		1	M40
MP-48B Series	MP-H48B Surface Mount 1 Locking Lever 2xM32 with Plastic Cover	MP009449			1		2	M32
MP-48B Series	MP-H48B Surface Mount 1 Locking Lever M40 with Plastic Cover	MP009450			1		1	M40
MP-48B Series	MP-H48B Top Entry Hood 2 Locking Points M40					2	1	M40
MP-48B Series	MP-H48B Side Entry Hood 2 Locking Points M40					2	1	M40

If locking lever = 1 then it mates with products where locking pins = 2



If locking lever = 1 then it mates with products where locking pins = 2



If locking lever = 1 then it mates with products where locking pins = 2



Crimps

The Multicomp Pro Heavy-Duty Connector series is a full range of heavy-duty inserts, housings, crimps and accessories. Crimps are available in 5A, 10A, 16A, 40A, 70A, 100A and 200A options which cover all but the most specialised of situations. All the crimp options are available with Silver plating however the lower current crimps are also offered with Gold plating for better conductivity at lower voltages and currents. The Multicomp Pro Heavy-Duty connectors have been created for applications that are subjected to harsh environments or where high vibration can cause standard connectors to fail. This makes them ideal for food & beverage manufacturing, packaging machines, conveyor belt systems, railway, oil & gas processing and other industrial automation. The entire range of connectors are RoHS compliant and as with all Multicomp Pro products, offer exceptional value for money.

5A Crimps

Farnell Part Number Silver-Plated	Gender	Current	Wire Diameter		Mates With
			mm ²	AWG	
MP009628	Female	5A	0.09-0.25	28-24	MP009636
MP009629	Female	5A	0.25-0.33	26-22	MP009637
MP009630	Female	5A	0.33-0.52	22-20	MP009638
MP009631	Female	5A	0.52-0.82	22-18	MP009639

Farnell Part Number Gold-Plated	Gender	Current	Wire Diameter		Mates With
			mm ²	AWG	
MP009632	Female	5A	0.09-0.25	28-24	MP009640
MP009633	Female	5A	0.25-0.33	26-22	MP009641
MP009634	Female	5A	0.33-0.52	22-20	MP009642
MP009635	Female	5A	0.52-0.82	22-18	MP009643

Farnell Part Number Silver-Plated	Gender	Current	Wire Diameter		Mates With
			mm ²	AWG	
MP009636	Male	5A	0.09-0.25	28-24	MP009628
MP009637	Male	5A	0.25-0.33	26-22	MP009629
MP009638	Male	5A	0.33-0.52	22-20	MP009630
MP009639	Male	5A	0.52-0.82	22-18	MP009631

Farnell Part Number Gold-Plated	Gender	Current	Wire Diameter		Mates With
			mm ²	AWG	
MP009640	Male	5A	0.09-0.25	28-24	MP009632
MP009641	Male	5A	0.25-0.33	26-22	MP009633
MP009642	Male	5A	0.33-0.52	22-20	MP009634
MP009643	Male	5A	0.52-0.82	22-18	MP009635

10A Crimps

Farnell Part Number Silver-Plated	Gender	Current	Wire Diameter		Mates With
			mm ²	AWG	
MP009644	Female	10A	0.14-0.37	26-22	MP009656
MP009645	Female	10A	0.5	20	MP009657
MP009646	Female	10A	0.75	18	MP009658
MP009647	Female	10A	1	18	MP009659
MP009648	Female	10A	1.5	16	MP009660
MP009649	Female	10A	2.5	14	MP009661

Farnell Part Number Gold-Plated	Gender	Current	Wire Diameter		Mates With
			mm ²	AWG	
MP009650	Female	10A	0.14-0.37	26-22	MP009662
MP009651	Female	10A	0.5	20	MP009663
MP009652	Female	10A	0.75	18	MP009664
MP009653	Female	10A	1	18	MP009665
MP009654	Female	10A	1.5	16	MP009666
MP009655	Female	10A	2.5	14	MP009667



Farnell Part Number Silver-Plated	Gender	Current	Wire Diameter		Mates With
			mm ²	AWG	
MP009656	Male	10A	0.14-0.37	26-22	MP009644
MP009657	Male	10A	0.5	20	MP009645
MP009658	Male	10A	0.75	18	MP009646
MP009659	Male	10A	1	18	MP009647
MP009660	Male	10A	1.5	16	MP009648
MP009661	Male	10A	2.5	14	MP009649

Farnell Part Number Gold-Plated	Gender	Current	Wire Diameter		Mates With
			mm ²	AWG	
MP009662	Male	10A	0.14-0.37	26-22	MP009650
MP009663	Male	10A	0.5	20	MP009651
MP009664	Male	10A	0.75	18	MP009652
MP009665	Male	10A	1	18	MP009653
MP009666	Male	10A	1.5	16	MP009654
MP009667	Male	10A	2.5	14	MP009655

16A Crimps

Farnell Part Number Silver-Plated	Gender	Current	Wire Diameter		Mates With
			mm ²	AWG	
MP009668	Female	16A	0.14-0.37	26-22	MP009683
MP009669	Female	16A	0.5	20	MP009684
MP009670	Female	16A	0.75	18	MP009685
MP009671	Female	16A	1	18	MP009686
MP009672	Female	16A	1.5	16	MP009687
MP009673	Female	16A	2.5	14	MP009688
MP009674	Female	16A	3	12	MP009689
MP009675	Female	16A	4	12	MP009690

Farnell Part Number Gold-Plated	Gender	Current	Wire Diameter		Mates With
			mm ²	AWG	
MP009676	Female	16A	0.14-0.37	22-16	MP009691
MP009677	Female	16A	0.5	20	MP009692
MP009678	Female	16A	0.75	18	MP009693
MP009679	Female	16A	1	18	MP009694
MP009680	Female	16A	1.5	16	MP009695
MP009681	Female	16A	2.5	14	MP009696
MP009682	Female	16A	4	12	MP009697

Farnell Part Number Silver-Plated	Gender	Current	Wire Diameter		Mates With
			mm ²	AWG	
MP009683	Male	16A	0.14-0.37	26-22	MP009668
MP009684	Male	16A	0.5	20	MP009669
MP009685	Male	16A	0.75	18	MP009670
MP009686	Male	16A	1	18	MP009671
MP009687	Male	16A	1.5	16	MP009672
MP009688	Male	16A	2.5	14	MP009673
MP009689	Male	16A	3	12	MP009674
MP009690	Male	16A	4	12	MP009675



Crimps

Farnell Part Number Gold-Plated	Gender	Current	Wire Diameter		Mates With
			mm ²	AWG	
MP009691	Male	16A	0.14-0.37	22-16	MP009676
MP009692	Male	16A	0.5	20	MP009677
MP009693	Male	16A	0.75	18	MP009678
MP009694	Male	16A	1	18	MP009679
MP009695	Male	16A	1.5	16	MP009680
MP009696	Male	16A	2.5	14	MP009681
MP009697	Male	16A	4	12	MP009682

40A Crimps

Farnell Part Number Silver-Plated	Gender	Current	Wire Diameter		Mates With
			mm ²	AWG	
MP009698	Female	40A	1.5	16	MP009703
MP009699	Female	40A	2.5	14	MP009704
MP009700	Female	40A	4	12	MP009705
MP009701	Female	40A	6	10	MP009706
MP009702	Female	40A	10	8	MP009707

Farnell Part Number Silver-Plated	Gender	Current	Wire Diameter		Mates With
			mm ²	AWG	
MP009703	Male	40A	1.5	16	MP009698
MP009704	Male	40A	2.5	14	MP009699
MP009705	Male	40A	4	12	MP009700
MP009706	Male	40A	6	10	MP009701
MP009707	Male	40A	10	8	MP009702

70A Crimps

Farnell Part Number Silver-Plated	Gender	Current	Wire Diameter mm ²	Mates With
MP009708	Female	70A	10	MP009711
MP009709	Female	70A	16	MP009712
MP009710	Female	70A	25	MP009713

Farnell Part Number Silver-Plated	Gender	Current	Wire Diameter mm ²	Mates With
MP009711	Male	70A	10	MP009708
MP009712	Male	70A	16	MP009709
MP009713	Male	70A	25	MP009710



100A Crimps

Farnell Part Number Silver-Plated	Gender	Current	Wire Diameter mm ²	Mates With
MP009714	Female	100A	10	MP009718
MP009715	Female	100A	16	MP009719
MP009716	Female	100A	25	MP009720
MP009717	Female	100A	35	MP009721

Farnell Part Number Silver-Plated	Gender	Current	Wire Diameter mm ²	Mates With
MP009718	Male	100A	10	MP009714
MP009719	Male	100A	16	MP009715
MP009720	Male	100A	25	MP009716
MP009721	Male	100A	35	MP009717

200A Crimps

Farnell Part Number Silver-Plated	Gender	Current	Wire Diameter mm ²	Mates With
MP009722	Female	200A	25	MP009726
MP009723	Female	200A	35	MP009727
MP009724	Female	200A	50	MP009728
MP009725	Female	200A	70	MP009729

Farnell Part Number Silver-Plated	Gender	Current	Wire Diameter mm ²	Mates With
MP009726	Male	200A	25	MP009722
MP009727	Male	200A	35	MP009723
MP009728	Male	200A	50	MP009724
MP009729	Male	200A	70	MP009725



Glands

The Multicomp Pro Heavy-Duty Connector series is a full range of heavy-duty inserts, housings, crimps and accessories. The plastic compression glands are made from a nylon body with NBR internals while the metal compression glands are made from a nickel plated brass body with nylon and NBR internals. All these compression glands are made to industry standard sizes for threaded mating and match perfectly with the entire Heavy-Duty Connector series which are ideal for food & beverage manufacturing, packaging machines, conveyor belt systems, railway, oil & gas processing and other industrial automation. The entire range of connectors are RoHS compliant and as with all Multicomp Pro products, offer exceptional value for money.

Plastic Glands	
Farnell Part Number	Thread Size
MP009453	M20*1.5
MP009454	M25*1.5
MP009455	M32*1.5
MP009456	M40*1.5



Metal Glands	
Farnell Part Number	Thread Size
MP009457	M20*1.5 (D6-12)
MP009458	M25*1.5 (D13-18)
MP009459	M32*1.5 (D15-22)
MP009460	M32*1.5 (D18-25)
MP009461	M40*1.5 (D18-25)



Modular Frames

Frame Series	Number of Moduals	Markings	Farnell Part Number	For Housing
MP-HF Series	2	A-B	MP009462	MP-H6B
MP-HF Series	3	A-C	MP009463	MP-H10B
MP-HF Series	4	A-D	MP009464	MP-H16B
MP-HF Series	6	A-F	MP009465	MP-H24B

