



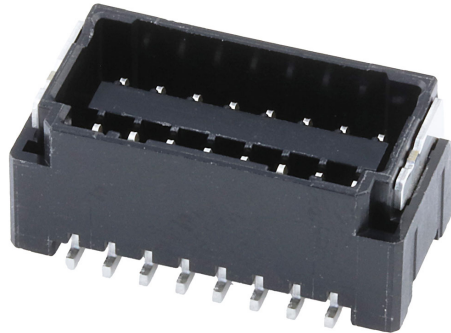
Part Number : [2202011871](#)

Product Description : 2.00mm Pitch, Micro-Lock Plus PCB Header, Dual Row, Vertical, Surface Mount, Matte Tin Plating, 18 Circuits, Low-Halogen, Black

Series Number : 220201

Status : Active

Product Category : PCB Headers and Receptacles



Documents & Resources

Drawings

[2202011871_sd.pdf](#)

Specifications

[2202000000-PS-000.pdf](#)

Product Environment Compliance

Compliance

GADSL/IMDS	Not Relevant
China RoHS	
EU ELV	Not Relevant
Low-Halogen Status	Low-Halogen per IEC 61249-2-21
REACH SVHC	Not Contained per D(2024)4144-DC (27 June 2024)
EU RoHS	Compliant per EU 2015/863

Multiple Part Product Compliance Statements

- Eu RoHS
- REACH SVHC
- Low-Halogen

Multiple Part Industry Compliance Documents

- IPC 1752A Class C
- IPC 1752A Class D
- Molex Product Compliance Declaration
- IEC-62474

Part Details

General

Status	Active
Category	PCB Headers and Receptacles
Series	220201
Description	2.00mm Pitch, Micro-Lock Plus PCB Header, Dual Row, Vertical, Surface Mount, Matte Tin Plating, 18 Circuits, Low-Halogen, Black
Application	Signal, Wire-to-Board
Component Type	PCB Header
Product Family	Micro-Lock Connector System
Product Name	Micro-Lock Plus
UPC	196823499258

Electrical

Current - Maximum per Contact	2.8A
Voltage - Maximum	250V AC (RMS)/DC

Physical

Breakaway	No
Circuits (Loaded)	18
Circuits (maximum)	18
Color - Resin	Black
Durability (mating cycles max)	30
First Mate / Last Break	No
Glow-Wire Capable	No
Guide to Mating Part	No
Keying to Mating Part	Yes
Lock to Mating Part	Yes
Material - Metal	Brass
Material - Plating Mating	Matte Tin
Material - Plating Termination	Matte Tin

Material - Resin	Polyamide
Net Weight	2536.760/mg
Number of Rows	2
Orientation	Vertical
Packaging Type	Embossed Tape on Reel
PCB Locator	No
PCB Retention	Yes
Pitch - Mating Interface	2.00mm
Pitch - Termination Interface	2.00mm
Plating min - Mating	1.000µm
Plating min - Termination	1.000µm
Polarized to Mating Part	Yes
Polarized to PCB	Yes
Robotic Placement	Vacuum Pick-Up Area
Shrouded	Fully
Stackable	No
Temperature Range - Operating	-40° to +105°C
Termination Interface Style	Surface Mount

Mates With / Use With

Mates with Part(s)

Description	Part Number
2.00mm Pitch Micro-Lock Plus Dual Row Receptacle Housings	<u>220200</u>