



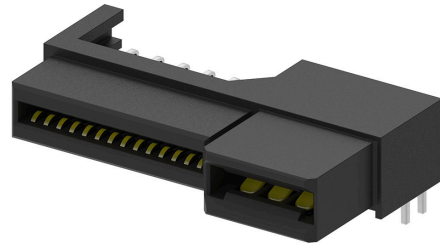
**Part Number :** [459842153](#)

**Product Description :** EXTreme LPHPower Receptacle Header, Right-Angle, 2 Power Contacts, 28 Signal Contacts, Select Gold (Au) Plating, for 1.57mm Thick PC Board

**Series Number :** 45984

**Status :** Active

**Product Category :** Board-to-Board Connectors



---

## Documents & Resources

### Drawings

[459842153\\_sd.pdf](#)

[PK-45984-001-001.pdf](#)

### Specifications

[PS-45984-001-001.pdf](#)

---

## Product Environment Compliance

### Compliance

GADSL/IMDS	Compliant with Exemption 44; 34; 33
China RoHS	
EU ELV	Not Relevant
Low-Halogen Status	Low-Halogen per IEC 61249-2-21
REACH SVHC	Not Contained per D(2024)4144-DC (27 June 2024)
EU RoHS	Compliant per EU 2015/863

### Multiple Part Product Compliance Statements

- Eu RoHS
- REACH SVHC
- Low-Halogen

### Multiple Part Industry Compliance Documents

- IPC 1752A Class C
- IPC 1752A Class D
- Molex Product Compliance Declaration

- IEC-62474

- chemSHERPA (xml)

EU RoHS Certificate of Compliance

---

## Part Details

### General

Status	Active
Category	Board-to-Board Connectors
Series	45984
Description	EXTreme LPHPower Receptacle Header, Right-Angle, 2 Power Contacts, 28 Signal Contacts, Select Gold (Au) Plating, for 1.57mm Thick PC Board
Application	Board-to-Board, Power, Signal
Component Type	PCB Receptacle
Product Family	EXTreme LPHPower Connectors
Product Name	EXTreme LPHPower
UPC	195842345300

### Electrical

Current - Maximum per Contact	30.0A
Grounding to PCB	No
Voltage - Maximum	250V AC (RMS)/DC (Power), 30V DC (Signal)

### Physical

Circuits (Loaded)	30
Circuits (maximum)	30
Color - Resin	Black
Durability (mating cycles max)	250
Glow-Wire Capable	No
Guide to Mating Part	No
Keying to Mating Part	None
Lock to Mating Part	No
Material - Metal	Copper Alloy
Material - Plating Mating	Gold

Material - Plating Termination	Tin
Material - Resin	High Temperature Thermoplastic
Net Weight	4.797/g
Number of Rows	2
Orientation	Right Angle
Packaging Type	Tray
PC Tail Length	2.90mm
PCB Locator	No
PCB Retention	None
PCB Thickness - Recommended	1.57mm
Pitch - Mating Interface	12.00mm, 1.27mm
Pitch - Termination Interface	2.00mm, 2.50mm, 1.27mm
Plating min - Mating	0.762µm
Plating min - Termination	3.810µm
Polarized to Mating Part	Yes
Polarized to PCB	Yes
(p)ower-(s)ignal Configuration	2p - 28s
Stackable	No
Temperature Range - Operating	-40° to +105°C
Termination Interface Style	Through Hole

---

## Mates With / Use With

### Mates with Part(s)

Description	Part Number
EXTreme LPHPower Right-Angle Plugs	<u>45985</u>
Mates With	1.57mm Card Edge