



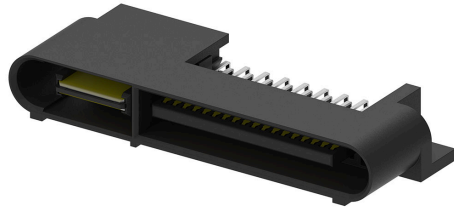
**Part Number :** [459852273](#)

**Product Description :** EXTreme LHPower Plug, Right-Angle, 2 Power Contacts, 36 Signal Contacts, Select Gold (Au) Plating, for 1.57mm Thick PC Board, with Guide Pockets

**Series Number :** 45985

**Status :** Active

**Product Category :** Board-to-Board Connectors



---

## Documents & Resources

### Drawings

[459852273\\_sd.pdf](#)

[PK-45984-001-001.pdf](#)

### 3D Models and Design Files

[459852273\\_stp.zip](#)

### Specifications

[PS-45984-001-001.pdf](#)

---

## Product Environment Compliance

### Compliance

|                    |   |
|--------------------|---|
| GADSL/IMDS         | Not Relevant                                    |
| China RoHS         |   |
| EU ELV             | Not Relevant                                    |
| Low-Halogen Status | Low-Halogen per IEC 61249-2-21                  |
| REACH SVHC         | Not Contained per D(2024)4144-DC (27 June 2024) |
| EU RoHS            | Compliant per EU 2015/863                       |

### Multiple Part Product Compliance Statements

- Eu RoHS
- REACH SVHC
- Low-Halogen

### Multiple Part Industry Compliance Documents

- IPC 1752A Class C

- IPC 1752A Class D
- Molex Product Compliance Declaration
- IEC-62474
- chemSHERPA (xml)

EU RoHS Certificate of Compliance

---

## Part Details

### General

|                |   |
|----------------|---|
| Status         | Active  |
| Category       | Board-to-Board Connectors   |
| Series         | 45985   |
| Description    | EXTreme LPHPower Plug, Right-Angle, 2 Power Contacts, 36 Signal Contacts, Select Gold (Au) Plating, for 1.57mm Thick PC Board, with Guide Pockets |
| Application    | Board-to-Board, Power, Signal   |
| Component Type | PCB Header  |
| Product Family | EXTreme LPHPower Connectors   |
| Product Name   | EXTreme LPHPower  |
| UPC            | 195842344495  |

### Electrical

|                               |   |
|-------------------------------|---|
| Current - Maximum per Contact | 30.0A                                     |
| Voltage - Maximum             | 250V AC (RMS)/DC (Power), 30V DC (Signal) |

### Physical

|                                |       |
|--------------------------------|-------|
| Breakaway                      | No    |
| Circuits (Loaded)              | 38    |
| Circuits (maximum)             | 38    |
| Color - Resin                  | Black |
| Durability (mating cycles max) | 250   |
| First Mate / Last Break        | No    |
| Glow-Wire Capable              | No    |
| Guide to Mating Part           | Yes   |
| Keying to Mating Part          | None  |

|                                |                                |
|--------------------------------|--------------------------------|
| Lock to Mating Part            | No                             |
| Material - Metal               | High Performance Alloy (HPA)   |
| Material - Plating Mating      | Gold                           |
| Material - Plating Termination | Tin                            |
| Material - Resin               | High Temperature Thermoplastic |
| Net Weight                     | 5.282/g                        |
| Number of Rows                 | 2                              |
| Orientation                    | Right Angle                    |
| Packaging Type                 | Tray                           |
| PC Tail Length                 | 2.90mm                         |
| PCB Locator                    | No                             |
| PCB Retention                  | None                           |
| PCB Thickness - Recommended    | 1.57mm                         |
| Pitch - Mating Interface       | 1.27mm, 12.00mm                |
| Pitch - Termination Interface  | 1.27mm, 2.00mm, 2.50mm         |
| Plating min - Mating           | 0.762µm                        |
| Plating min - Termination      | 3.810µm                        |
| Polarized to Mating Part       | Yes                            |
| Polarized to PCB               | Yes                            |
| (p)ower-(s)ignal Configuration | 2p - 36s                       |
| Shrouded                       | Fully                          |
| Stackable                      | No                             |
| Temperature Range - Operating  | -40° to +105°C                 |
| Termination Interface Style    | Through Hole                   |

---

## Mates With / Use With

### Mates with Part(s)

| Description                                  | Part Number  |
|--|--------------|
| EXTreme LPHPower Right-Angle PCB Receptacles | <u>45984</u> |