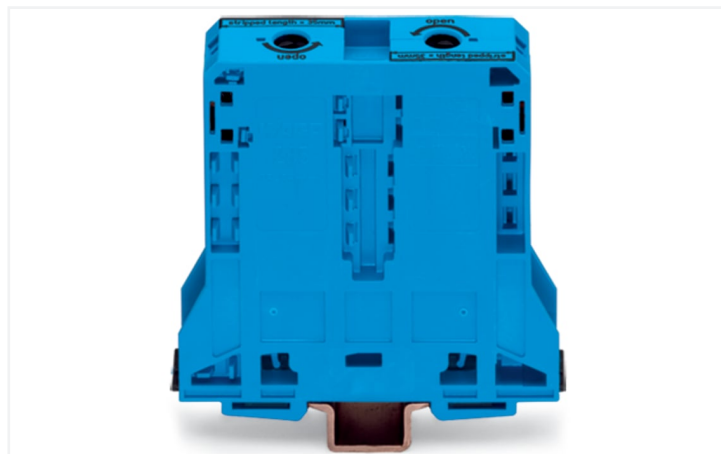
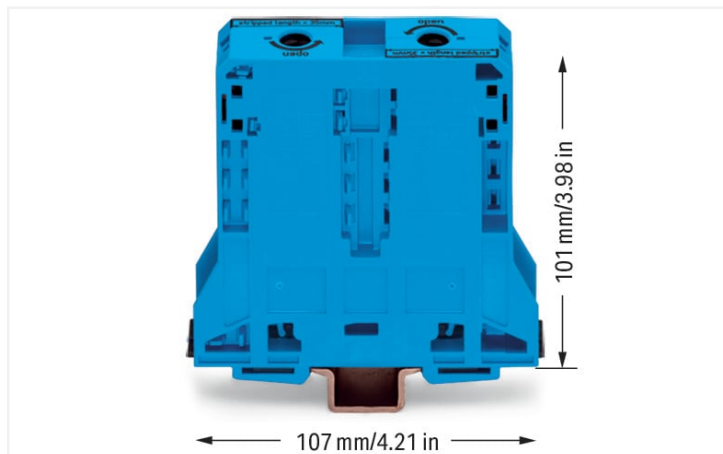


## Data Sheet | Item Number: 285-194

2-conductor through terminal block; 95 mm<sup>2</sup>; lateral marker slots; only for DIN 35 x 15 rail; POWER CAGE CLAMP; 95,00 mm<sup>2</sup>; blue

<https://www.wago.com/285-194>



Color: ■ blue

### Electrical data

| Ratings per          | IEC/EN 60947-7-1 |     |    |
|----------------------|------------------|-----|----|
| Overvoltage category | III              | III | II |
| Pollution degree     | 3                | 2   | 2  |
| Nominal voltage      | 1000 V           | -   | -  |
| Rated surge voltage  | 12 kV            | -   | -  |
| Rated current        | 232 A            | -   | -  |

| Ratings per IEC/EN 2          |        |
|-------------------------------|--------|
| Rated voltage (III/3) 2       | 1500 V |
| Rated surge voltage (III/3) 2 | 12 kV  |

| Approvals per | UL 1059 |       |   |
|---------------|---------|-------|---|
| Use group     | B       | C     | D |
| Rated voltage | 600 V   | 600 V | - |
| Rated current | 200 A   | 200 A | - |

| Approvals per | CSA 22.2 No 158 |        |   |
|---------------|-----------------|--------|---|
| Use group     | B               | C      | D |
| Rated voltage | 1000 V          | 1000 V | - |
| Rated current | 210 A           | -      | - |

| Power Loss   |                  |
|--|------------------|
| Power loss, per pole (potential)                             | 7.5354 W         |
| Rated current $I_N$ for specified power loss                 | 232 A            |
| Resistance value for specified, current-dependent power loss | 0.00014 $\Omega$ |

| General information |       |
|---------------------|-------|
| Voltage type 1      | AC/DC |
| Voltage type 2      | DC    |

### Connection data

|                            |   |
|----------------------------|---|
| Clamping units             | 2 |
| Total number of potentials | 1 |
| Number of levels           | 1 |
| Number of jumper slots     | 2 |

| Connection 1                                      |   |
|---|---|
| Connection technology                             | POWER CAGE CLAMP                          |
| Actuation type                                    | T-wrench; 8 mm                            |
| Connectable conductor materials                   | Copper                                    |
| Nominal cross-section                             | 95 mm <sup>2</sup>                        |
| Solid conductor                                   | 25 ... 95 mm <sup>2</sup> / 4 ... 4/0 AWG |
| Stranded conductor                                | 25 ... 95 mm <sup>2</sup> / 4 ... 4/0 AWG |
| Fine-stranded conductor                           | 25 ... 95 mm <sup>2</sup> / 4 ... 4/0 AWG |
| Fine-stranded conductor; with insulated ferrule   | 25 ... 95 mm <sup>2</sup> / 4 ... 4/0 AWG |
| Fine-stranded conductor; with uninsulated ferrule | 25 ... 95 mm <sup>2</sup> / 4 ... 4/0 AWG |
| Strip length                                      | 35 mm / 1.38 inches                       |
| Wiring direction                                  | Side-entry wiring                         |

### Physical data

|                                   |                       |
|-----------------------------------|-----------------------|
| Width                             | 25 mm / 0.984 inches  |
| Height                            | 107 mm / 4.213 inches |
| Depth from upper-edge of DIN-rail | 101 mm / 3.976 inches |

### Mechanical data

|                 |                                    |
|-----------------|------------------------------------|
| Mounting type   | DIN-rail 35 x 15                   |
| Mounting (note) | only suitable for DIN 35 x 15 rail |
| Marking level   | Side marking                       |

### Material data

|                                    |  |
|------------------------------------|--|
| Note (material data)               | <a href="#">Information on material specifications can be found here</a> |
| Color                              | blue   |
| Material group                     | I  |
| Insulation material (main housing) | Polyamide (PA66)   |
| Flammability class per UL94        | V0   |
| Fire load                          | 3.532 MJ   |
| Weight                             | 263.2 g  |

### Environmental requirements

|                                  |                 |
|----------------------------------|-----------------|
| Processing temperature           | -35 ... +85 °C  |
| Continuous operating temperature | -60 ... +105 °C |

### Commercial data

|                       |                                  |
|-----------------------|----------------------------------|
| Product Group         | 1 (Rail Mounted Terminal Blocks) |
| eCl@ss 10.0           | 27-14-11-20                      |
| eCl@ss 9.0            | 27-14-11-20                      |
| ETIM 9.0              | EC000897                         |
| ETIM 8.0              | EC000897                         |
| PU (SPU)              | 5 pcs                            |
| Packaging type        | Box                              |
| Country of origin     | PL                               |
| GTIN                  | 4044918452533                    |
| Customs tariff number | 85369010000                      |

### Environmental Product Compliance

|                        |                         |
|------------------------|-------------------------|
| RoHS Compliance Status | Compliant, No Exemption |
|------------------------|-------------------------|

### Approvals / Certificates

#### General approvals



#### General approvals

|   |         |        |
|---|---------|--------|
| UL<br>Underwriters Laboratories<br>Inc. | UL 1059 | E45172 |
|---|---------|--------|

| Approval                              | Standard      | Certificate Name |
|---------------------------------------|---------------|------------------|
| CCA<br>DEKRA Certification B.V.       | EN 60947      | NTR NL-7707      |
| CSA<br>DEKRA Certification B.V.       | C22.2 No. 158 | 154112           |
| KEMA/KEUR<br>DEKRA Certification B.V. | EN 60947      | 71-105562        |

Declarations of conformity and manufacturer's declarations

| Approval   | Standard | Certificate Name |
|--|----------|------------------|
| EU-Declaration of Conformity<br>WAGO GmbH & Co. KG | -        | -                |
| UK-Declaration of Conformity<br>WAGO GmbH & Co. KG | -        | -                |

Approvals for marine applications



| Approval   | Standard | Certificate Name |
|--|----------|------------------|
| ABS<br>American Bureau of Shipping               | EN 60947 | 20-HG1941090-PDA |
| BV<br>Bureau Veritas S.A.                        | EN 60947 | 07436/FO BV      |
| DNV GL<br>Det Norske Veritas, Germanischer Lloyd | -        | TAE00001V2       |
| LR<br>Lloyds Register                            | EN 60947 | 91/20112 (E9)    |

Downloads

Environmental Product Compliance

| Compliance Search  |
|--|
| Environmental Product Compliance 285-194 <a href="#">↓</a> |

Documentation

| Additional Information |                   |                   |
|------------------------|-------------------|-------------------|
| Technical Section      | pdf<br>2246.92 KB | <a href="#">↓</a> |

| Bid Text |            |                 |  |                   |
|----------|------------|-----------------|--|-------------------|
| 285-194  | 19.02.2019 | xml<br>3.23 KB  |  | <a href="#">↓</a> |
| 285-194  | 04.01.2018 | doc<br>23.50 KB |  | <a href="#">↓</a> |

CAD/CAE-Data

| CAD data             |                   |
|----------------------|-------------------|
| 2D/3D Models 285-194 | <a href="#">↓</a> |

| CAE data                  |                   |
|---------------------------|-------------------|
| EPLAN Data Portal 285-194 | <a href="#">↓</a> |
| WSCAD Universe 285-194    | <a href="#">↓</a> |
| ZUKEN Portal 285-194      | <a href="#">↓</a> |

## 1 Compatible Products

### 1.1 Optional Accessories

#### 1.1.1 Cover

##### 1.1.1.1 Cover



**Item No.: 285-169**

Finger guard; touchproof cover protects unused conductor entries and jumper slots; for 95 mm<sup>2</sup> high-current tbs; yellow

#### 1.1.2 Current and voltage tap

##### 1.1.2.1 Current and voltage tap



**Item No.: 855-951/250-000**

Current and voltage tap up to 95 mm<sup>2</sup>; Primary rated current: 250 A; Secondary rated current: 1 A; Rated power: 0.2 VA; Accuracy class: 0.5; fused

#### 1.1.3 DIN-rail

##### 1.1.3.1 Mounting accessories



**Item No.: 210-198**

Copper carrier rail; 35 x 15 mm; 2.3 mm thick; 2 m long; unslotted; according to EN 60715; copper-colored



**Item No.: 210-508**

Steel carrier rail; 35 x 15 mm; 1.5 mm thick; 2 m long; slotted; galvanized; similar to EN 60715; silver-colored



**Item No.: 210-197**

Steel carrier rail; 35 x 15 mm; 1.5 mm thick; 2 m long; slotted; similar to EN 60715; silver-colored



**Item No.: 210-506**

Steel carrier rail; 35 x 15 mm; 1.5 mm thick; 2 m long; unslotted; galvanized; similar to EN 60715; silver-colored



**Item No.: 210-114**

Steel carrier rail; 35 x 15 mm; 1.5 mm thick; 2 m long; unslotted; similar to EN 60715; silver-colored

#### 1.1.4 Ferrule

##### 1.1.4.1 Ferrule



**Item No.: 216-435**

Ferrule; Sleeve for 50 mm<sup>2</sup> / AWG 1; un-insulated; electro-tin plated; electrolytic copper; gastight crimped; acc. to DIN 46228, Part 1/08.92

1.1.5 Installation

1.1.5.1 Mounting accessories



**Item No.: 285-168**

Fixing element; for 95 mm<sup>2</sup> high-current terminal blocks; orange

**Item No.: 249-197**

Screwless end stop; 14 mm wide; for DIN-rail 35 x 15 and 35 x 7.5; gray

1.1.6 Jumper

1.1.6.1 Jumper



**Item No.: 285-495**

Jumper; insulated; gray

1.1.7 Marking

1.1.7.1 Group marker carrier



**Item No.: 249-105**

Group marker carrier; gray

1.1.7.2 Marker



**Item No.: 793-5501/000-006**

WMB marking card; as card; for terminal block width 5 - 17.5 mm; stretchable 5 - 5.2 mm; plain; snap-on type; blue



**Item No.: 793-5501/000-014**

WMB marking card; as card; for terminal block width 5 - 17.5 mm; stretchable 5 - 5.2 mm; plain; snap-on type; brown



**Item No.: 793-5501/000-007**

WMB marking card; as card; for terminal block width 5 - 17.5 mm; stretchable 5 - 5.2 mm; plain; snap-on type; gray



**Item No.: 793-5501/000-023**

WMB marking card; as card; for terminal block width 5 - 17.5 mm; stretchable 5 - 5.2 mm; plain; snap-on type; green



**Item No.: 793-5501/000-017**

WMB marking card; as card; for terminal block width 5 - 17.5 mm; stretchable 5 - 5.2 mm; plain; snap-on type; light green



**Item No.: 793-5501/000-012**

WMB marking card; as card; for terminal block width 5 - 17.5 mm; stretchable 5 - 5.2 mm; plain; snap-on type; orange



**Item No.: 793-5501/000-005**

WMB marking card; as card; for terminal block width 5 - 17.5 mm; stretchable 5 - 5.2 mm; plain; snap-on type; red



**Item No.: 793-5501/000-024**

WMB marking card; as card; for terminal block width 5 - 17.5 mm; stretchable 5 - 5.2 mm; plain; snap-on type; violet



**Item No.: 793-5501**

WMB marking card; as card; for terminal block width 5 - 17.5 mm; stretchable 5 - 5.2 mm; plain; snap-on type; white



**Item No.: 793-5501/000-002**

WMB marking card; as card; for terminal block width 5 - 17.5 mm; stretchable 5 - 5.2 mm; plain; snap-on type; yellow



**Item No.: 793-501/000-006**

WMB marking card; as card; not stretchable; plain; snap-on type; blue



**Item No.: 793-501/000-007**

WMB marking card; as card; not stretchable; plain; snap-on type; gray



**Item No.: 793-501/000-023**

WMB marking card; as card; not stretchable; plain; snap-on type; green



**Item No.: 793-501/000-017**

WMB marking card; as card; not stretchable; plain; snap-on type; light green



**Item No.: 793-501/000-012**

WMB marking card; as card; not stretchable; plain; snap-on type; orange



**Item No.: 793-501/000-005**

WMB marking card; as card; not stretchable; plain; snap-on type; red



**Item No.: 793-501/000-024**

WMB marking card; as card; not stretchable; plain; snap-on type; violet



**Item No.: 793-501**

WMB marking card; as card; not stretchable; plain; snap-on type; white



**Item No.: 793-501/000-002**

WMB marking card; as card; not stretchable; plain; snap-on type; yellow



**Item No.: 2009-115/000-006**

WMB-Inline; for Smart Printer; 1500 pieces on roll; stretchable 5 - 5.2 mm; plain; snap-on type; blue



**Item No.: 2009-115/000-007**

WMB-Inline; for Smart Printer; 1500 pieces on roll; stretchable 5 - 5.2 mm; plain; snap-on type; gray



**Item No.: 2009-115/000-023**

WMB-Inline; for Smart Printer; 1500 pieces on roll; stretchable 5 - 5.2 mm; plain; snap-on type; green



**Item No.: 2009-115/000-017**

WMB-Inline; for Smart Printer; 1500 pieces on roll; stretchable 5 - 5.2 mm; plain; snap-on type; light green



**Item No.: 2009-115/000-012**

WMB-Inline; for Smart Printer; 1500 pieces on roll; stretchable 5 - 5.2 mm; plain; snap-on type; orange

### 1.1.7.2 Marker



**Item No.: 2009-115/000-005**

WMB-Inline; for Smart Printer; 1500 pieces on roll; stretchable 5 - 5.2 mm; plain; snap-on type; red

**Item No.: 2009-115/000-024**

WMB-Inline; for Smart Printer; 1500 pieces on roll; stretchable 5 - 5.2 mm; plain; snap-on type; violet

**Item No.: 2009-115**

WMB-Inline; for Smart Printer; 1500 pieces on roll; stretchable 5 - 5.2 mm; plain; snap-on type; white

**Item No.: 2009-115/000-002**

WMB-Inline; for Smart Printer; 1500 pieces on roll; stretchable 5 - 5.2 mm; plain; snap-on type; yellow

### 1.1.7.3 Marker carrier



**Item No.: 285-442**

Adaptor; gray

### 1.1.8 Power tap

#### 1.1.8.1 Power tap



**Item No.: 285-407**

Power tap; for 95 mm<sup>2</sup> high-current tbs; gray

### 1.1.9 Protective warning marker

#### 1.1.9.1 Cover



**Item No.: 285-170**

Protective warning marker; with high-voltage symbol, black; yellow

**Item No.: 285-175**

Protective warning marker; yellow

### 1.1.10 Tool

#### 1.1.10.1 Operating tool



**Item No.: 285-172**

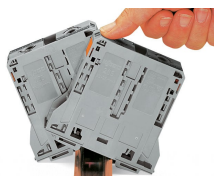
Allen wrench; with a partially insulated shaft; green

**Item No.: 285-173**

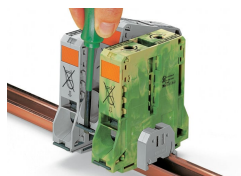
Allen wrench; with a partially insulated shaft; with anti-rotation protection; green

### Installation Notes

#### Installation



Snapping a terminal block onto DIN-rail (to the left or to the right).



Removing a terminal block from the assembly (to the left or to the right).

### Conductor termination

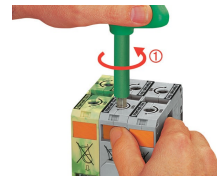


For the optimal clamping force:

- Bend conductor
- Cut conductor to length (conductor end must be straight)
- Strip conductor

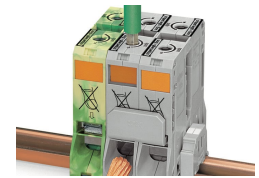


Always observe the on-unit printed strip length guide!



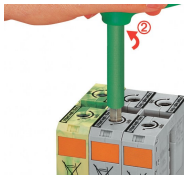
**Conductor termination – step 1:**

Rotate the T-wrench counter-clockwise to the stop. Next, push in the orange locking tab. The clamp is locked open for hands-free wiring.



**Conductor termination – step 2:**

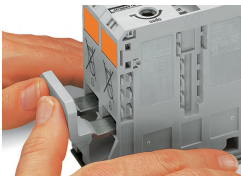
Insert a stripped conductor into the clamping unit until it hits the backstop. Hold in this position.



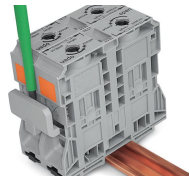
**Conductor termination – step 3:**

A short counter-clockwise rotation releases the tab. When unlocked, the T-wrench rotates clockwise, securely clamping the conductor.

### Commoning



Commoning with an adjacent jumper: insert the jumper above the conductor entry hole – prior to conductor termination. The nominal cross-section remains unchanged.



Removing jumper via operating tool.

### Cover



Protective warning marker may indicate: Notice: Power is still on even after switching off the main switch!

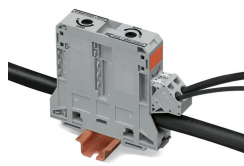


Yellow, detachable finger guards provide touch-proof safety by shielding jumper contact slots and/or unused conductor entries.

### Power tap



Easily and consistently tap directly into the power supply. Insert the unwired tap before opening the clamping unit.



The power taps enable the distribution of the L1, L2 and L3 potentials. The warning covers and finger guards ensure IP20 touch-proof protection.

### Current and voltage tap



Installation via jumper slot



Feedthrough for primary conductors

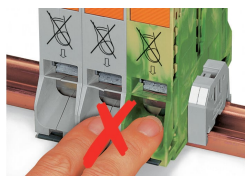


Push-in CAGE CLAMP® connection technology



Integrated fuse

### Security

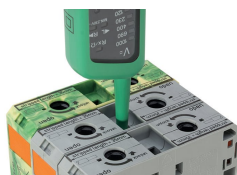


Risk of Injury!  
Do not insert fingers in the conductor entry!

### Testing

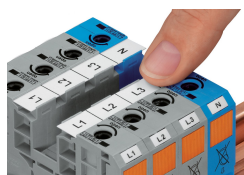


Testing via touch-proof 4 mm Ø test plugs (not available from WAGO, but offered by industry suppliers such as, Multi-Contact Deutschland GmbH).

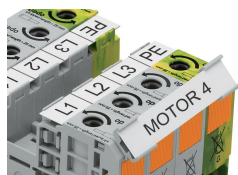


Testing  
Voltage measurements can be performed, e.g., using a 2-pole voltage tester (Item No. 206-707).

### Marking



WMB markers or self-adhesive, printable marking strips can be accommodated on 35, 50 and 95 mm<sup>2</sup> high-current terminal blocks.



Marker carrier (Item No. 285-442) for marking strips (Item No. 2009-110) or 2 WMB markers for 285-13x, 285-15x and 285-19x Terminal Blocks