

SMD 2450MHz High Rejection Band Pass Filter



AFII-LC-0044

Request Samples



Check Inventory



2.0 x 1.25 x 0.9 mm

RoHS Compliant

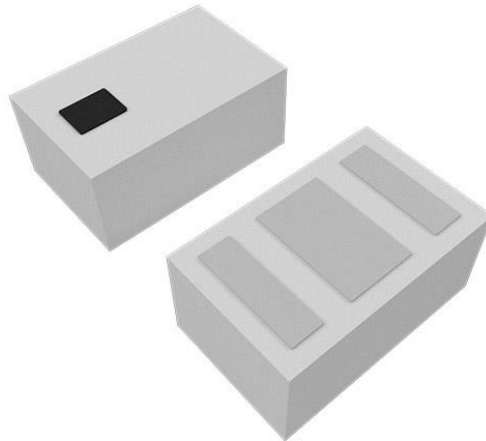
Features

- Bandpass Ceramic Filter with 100MHz Bandwidth
- Compact in Size 2.0 x 1.25 x 0.9 mm
- Single-Ended Input and Output
- Excellent Selectivity with High Out-of-Band Rejection
- RoHS Compliant

Applications

- Bluetooth® / ZigBee® / Thread / Matter
- 2.4GHz TWS Audio
- IoT Wearable Devices
- Smart Home Automation

Product Image



SMD 2450MHz High Rejection Band Pass Filter



AFII-LC-0044

Request Samples



Check Inventory



2.0 x 1.25 x 0.9 mm

RoHS Compliant

Electrical Specification

Parameters	Minimum	Typical	Maximum	Units	Notes
Center Frequency (f ₀)	-	2450	-	MHz	-
Passband	2400	-	2500	MHz	-
Insertion Loss	1.0	1.2	1.8	dB	@25°C
	-	-	2.0	dB	@-40°C ~ +85°C
VSWR	≤ 2.0			-	-
Relative Attenuation (Reference level: 0dB)	35	36.3	-	dB	824~960 MHz
	30	36.5	-		1545~1605 MHz
	35	38	-		1770~1990 MHz
	30	36	-		2170 MHz
	30	38	-		4800~5000 MHz
	25	27	-		7200~7500 MHz
Source Impedance ⁽¹⁾ (single ended)	-	50	-	Ω	-
Load Impedance ⁽¹⁾ (single ended)	-	50	-	Ω	-
Power Capacity	3			W	

Notes: (1) A matching network is unnecessary (refer to the Measurement Circuits section).

Mechanical Specification

Parameters	Specifications
Dimension	2.0 x 1.25 x 0.9 mm
Mounting Type	Surface Mount

Environmental Specification

Parameters	Specifications
Operating Temperature Range	-40°C ~ +85°C
Storage Temperature Range	-10°C ~ +40°C
RoHS Compliant	Yes



5101 Hidden Creek Ln Spicewood TX 78669
 Phone: 512-371-6159 | Fax: 512-351-8858
 For terms and conditions of sales, please visit:
www.abracon.com

REVISED: 11-25-24

ABRACON IS
 ISO9001-2015
 CERTIFIED

SMD 2450MHz High Rejection Band Pass Filter



AFII-LC-0044

Request Samples



Check Inventory



2.0 x 1.25 x 0.9 mm

RoHS Compliant

Ordering Information

Part Number	Description
AFII-LC-0044	SMD 2450MHz High Rejection Band Pass Filter
AFII-LC-0044-EVB	SMD 2450MHz High Rejection Band Pass Filter EVB

Note: Other options not listed may be available upon request via [Abracon online support](#)

SMD 2450MHz High Rejection Band Pass Filter



AFII-LC-0044

Request Samples



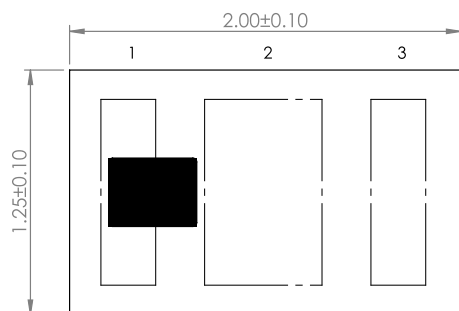
Check Inventory



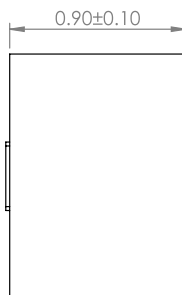
2.0 x 1.25 x 0.9 mm

RoHS Compliant

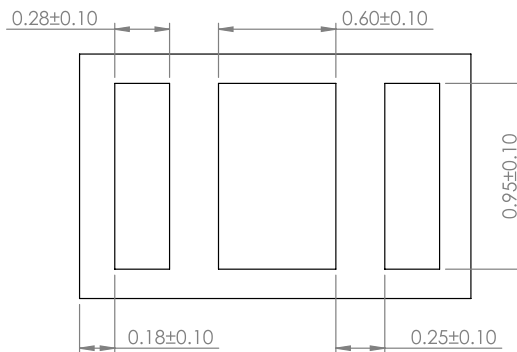
Product Dimensions



TOP VIEW

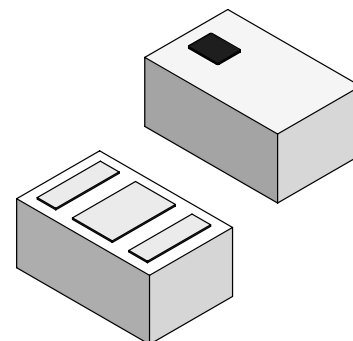


SIDE VIEW



BOTTOM VIEW

Pin #	Function
1	In/Out
2	GND
3	In/Out
M	Mark



Unit: mm

SMD 2450MHz High Rejection Band Pass Filter



AFII-LC-0044

Request Samples



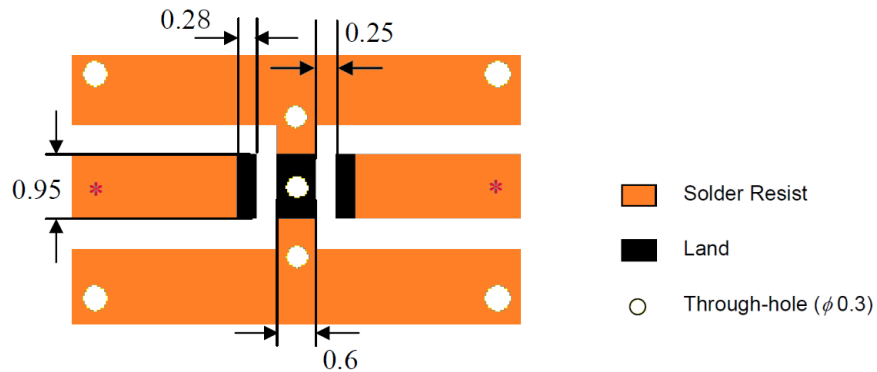
Check Inventory



2.0 x 1.25 x 0.9 mm

RoHS Compliant

Recommended Land Pattern



Unit : mm

Please note: The line width should be designed to achieve a 50-ohm characteristic impedance, depending on the PCB material and thickness. For technical assistance, please contact [Abracon online support](#) through our online support platform.

SMD 2450MHz High Rejection Band Pass Filter



AFII-LC-0044

Request Samples



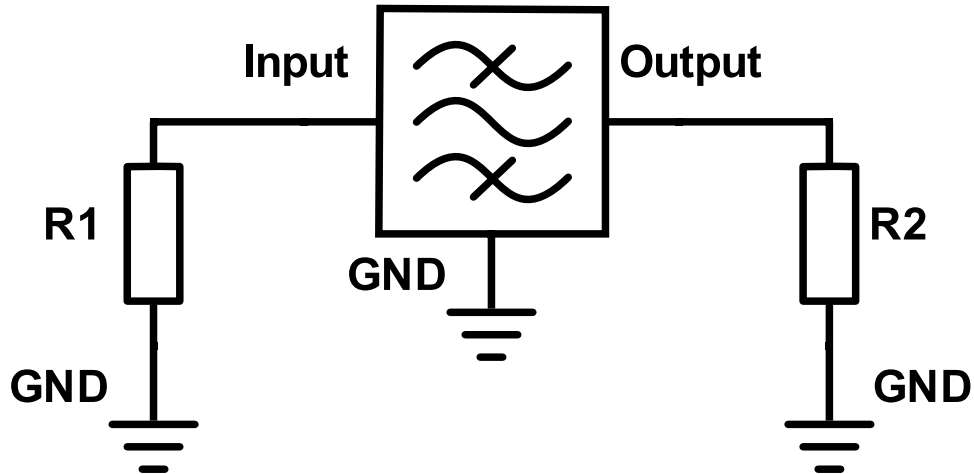
Check Inventory



2.0 x 1.25 x 0.9 mm

RoHS Compliant

Measurement Circuit



Port	Matching Component
Input	R1: 50Ω
Output	R2: 50Ω

SMD 2450MHz High Rejection Band Pass Filter



AFII-LC-0044

Request Samples

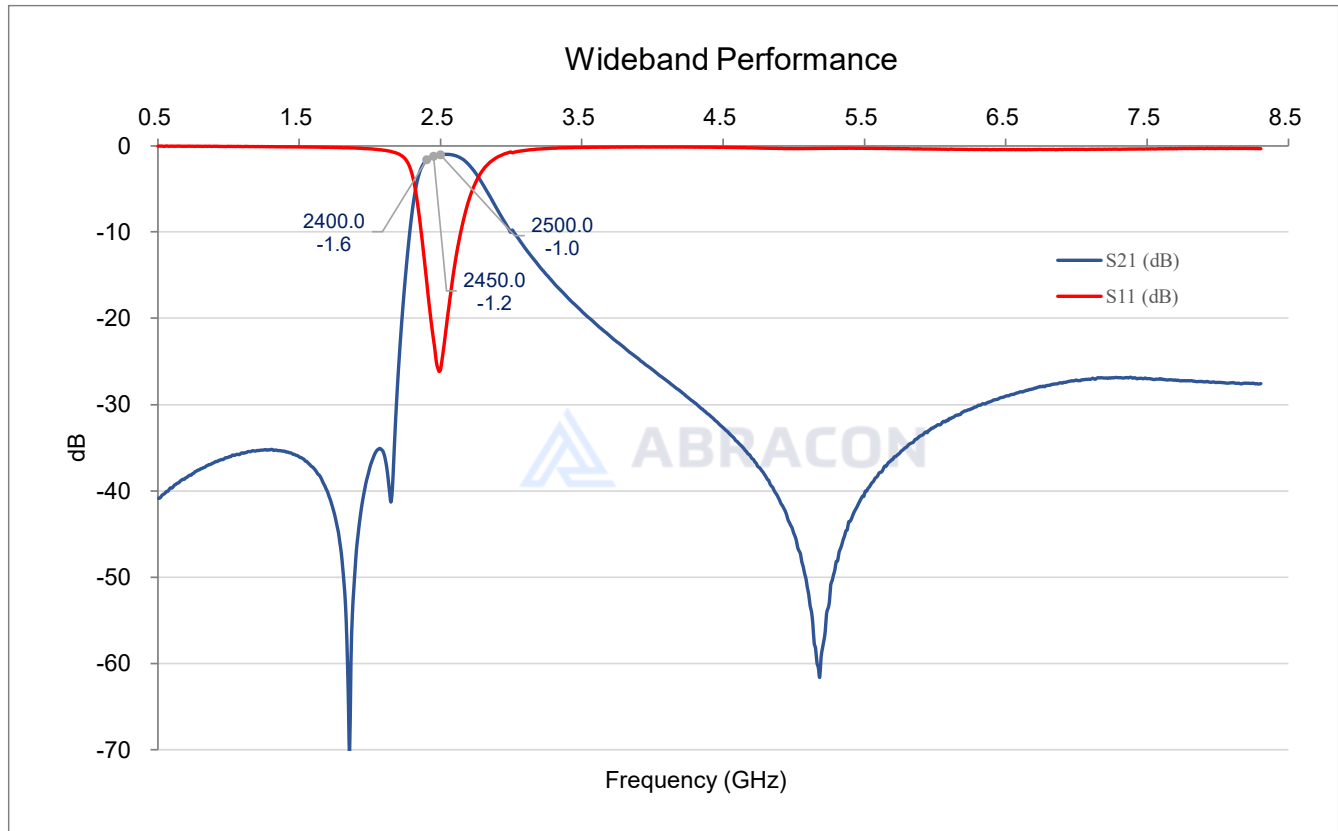


Check Inventory



2.0 x 1.25 x 0.9 mm
RoHS Compliant

Frequency Characteristics



SMD 2450MHz High Rejection Band Pass Filter



AFII-LC-0044

Request Samples



Check Inventory



2.0 x 1.25 x 0.9 mm
RoHS Compliant

Reflow Profile [JEDEC J-STD-020]

Solder paste: Sn/3.0Ag/0.5Cu

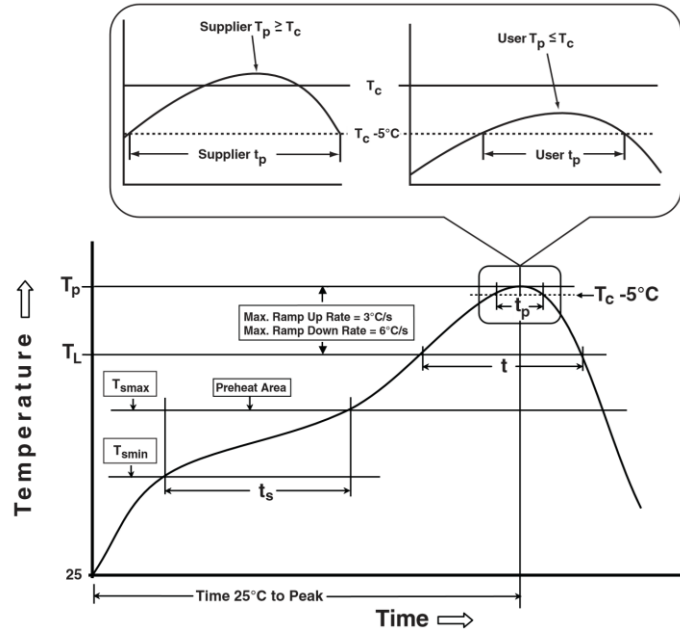


Table 1

SnPb Eutectic Process Classification Temperatures (T_c)		
Package Thickness	Volume mm^3 <350	Volume mm^3 ≥ 350
<2.5mm	235°C	220°C
$\geq 2.5\text{mm}$	220°C	220°C

Table 2

Pb-Free Process Classification Temperatures (T_c)			
Package Thickness	Volume mm^3 <350	Volume mm^3 350-2000	Volume mm^3 >2000
<1.6mm	260°C	260°C	260°C
1.6mm - 2.5mm	260°C	250°C	245°C
>2.5mm	250°C	245°C	245°C

Profile Feature	Sn-Pb Eutectic Assembly	Pb-Free Assembly
Preheat / soak		
Temperature minimum (T_{smin})	100°C	150°C
Temperature maximum (T_{smax})	150°C	200°C
Time (T_{smin} to T_{smax}) (t_s)	60 – 120 sec.	60 – 90 sec.
Average ramp-up rate (T_{smax} to T_p)	3°C/sec. max	3°C/sec. max
Liquidous temperature (T_L)	183°C	217°C
Time at Liquidous (T_L)	60 – 150 sec.	60 – 150 sec.
Peak package body temperature (T_p)*	See Table 1	See Table 2
Time (T_p)** within 5°C of the specified classification temperature (T_c)	20 sec.	10 sec.
Ramp-down rate (T_p to T_{smax})	6°C/sec. max	6°C/sec. max
Time 25°C to peak temperature	6 min. max	8 min. max
Reflow cycles	2 max	2 max

*Tolerance for peak profile temperature (T_p) is defined as a supplier minimum and a user maximum.

**Tolerance for time at peak profile temperature (t_p) is defined as a supplier minimum and a user maximum.



5101 Hidden Creek Ln Spicewood TX 78669
Phone: 512-371-6159 | Fax: 512-351-8858
For terms and conditions of sales, please visit:
www.abracon.com

REVISED: 11-25-24

ABRACON IS
ISO9001-2015
CERTIFIED

SMD 2450MHz High Rejection Band Pass Filter



AFII-LC-0044

Request Samples



Check Inventory

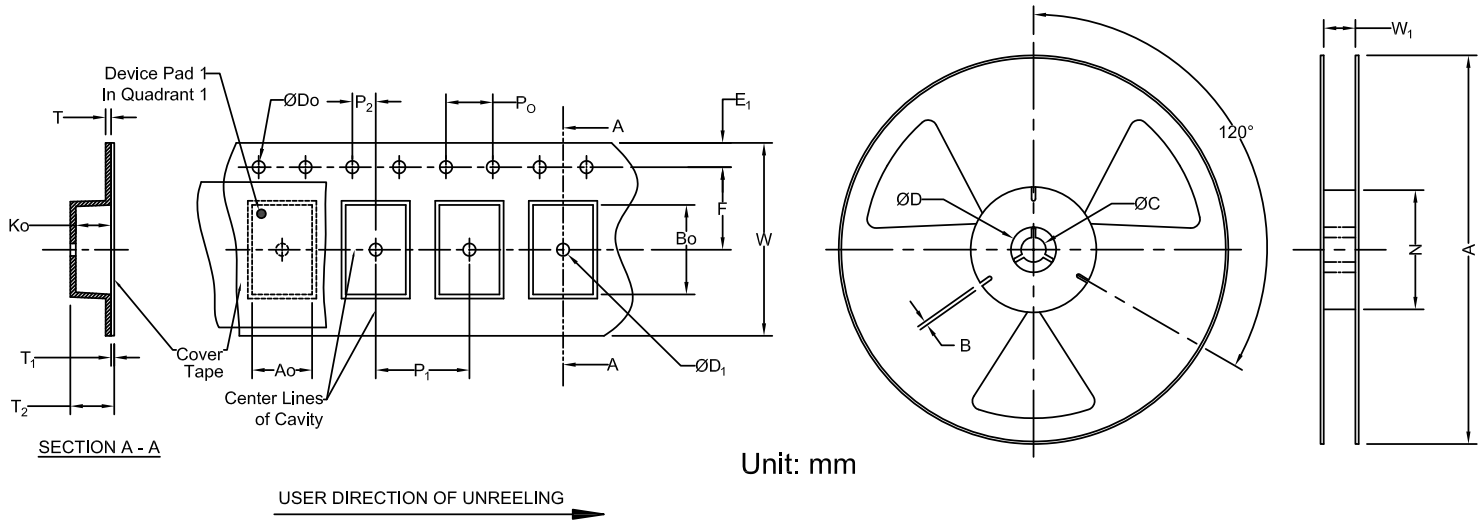


2.0 x 1.25 x 0.9 mm

RoHS Compliant

Packaging

Tape & Reel Dimension



Carrier Tape Specifications (mm)

E1	D0	P0	P2	F	P1	W	A0	B0	T ₂	Reel Qty
1.75 ± 0.1	1.5 ± 0.1	4.0 ± 0.1	2.0 ± 0.05	3.5 ± 0.05	2.0 ± 0.05	8.0 ± 0.3	1.52 ± 0.10	2.25 ± 0.10	0.27 Max	4,000

Reel Specifications (mm)

A	W ₁	N	C
178 ± 2.0	10.0 ± 1.5	58 ± 2.0	13.5 ± 0.2

ATTENTION: Abracon LLC's products are Commercial-Off-The-Shelf ('COTS'), which are designed, intended, and validated for use in commercial, industrial, and automotive applications. The customer is responsible for testing and verifying the performance of an Abracon solution to meet their system-level requirements.



5101 Hidden Creek Ln Spicewood TX 78669
 Phone: 512-371-6159 | Fax: 512-351-8858
 For terms and conditions of sales, please visit:
www.abracon.com

REVISED: 11-25-24

ABRACON IS
 ISO9001-2015
 CERTIFIED