

SMD UWB High Rejection Band Pass Filter



AFII-LC-0048

Request Samples



Check Inventory



1.6 x 0.8 x 0.55 mm

RoHS Compliant

MSL Level = N/A

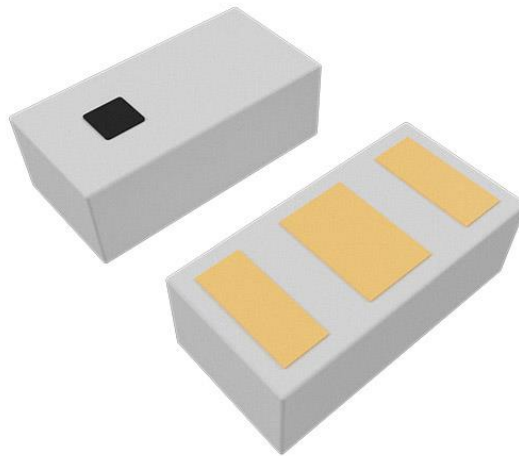
Features

- Supports UWB Channels 5-9
- Compact in Size 1.6 x 0.8 x 0.55 mm
- Single-Ended Input and Output
- Excellent Selectivity with High Out-of-Band Rejection
- 50-ohm Characteristic Impedance
- RoHS Compliant

Applications

- UWB (Ultra-Wide Band)
- Secure Car Access
- Item Tracking
- Indoor Navigation
- Hands-Free Payment
- Smart Access
- Object Detection

Product Image



SMD UWB High Rejection Band Pass Filter



AFII-LC-0048

Request Samples



Check Inventory



1.6 x 0.8 x 0.55 mm

RoHS Compliant

MSL Level = N/A

Electrical Specification

Parameters	Minimum	Typical	Maximum	Units	Notes
Center Frequency (f_0)	-	7245	-	MHz	
Passband	6240	-	8250	MHz	UWB channel 5~9
Insertion Loss	-	1.5	1.8	dB	@25°C
	-	1.7	2.0		@-40°C ~ +85°C
VSWR	-	-	2.0		
Relative Attenuation (Reference level: 0dB)	27	-	-	dB	700~2690 MHz
	27	-	-		3300~3800 MHz
	29	-	-		3800~4000 MHz
	34	-	-		4000~4200 MHz
	22	-	-		4400~5000 MHz
	25	-	-		12450~13500 MHz
	26	-	-		15500~16500 MHz
Amplitude ripple	-	-	1.0	dB	@ 20MHz
Group Delay	-	-	3.0	ns	
Group Delay Ripple	-	-	1.0	ns	
Source Impedance ⁽¹⁾ (single ended)	-	50	-	Ω	
Load Impedance ⁽¹⁾ (single ended)	-	50	-	Ω	
Power Capacity	3.0			W	

Notes: (1) A matching network is unnecessary (refer to the Measurement Circuits section).

SMD UWB High Rejection Band Pass Filter



AFII-LC-0048

Request Samples



Check Inventory



1.6 x 0.8 x 0.55 mm

RoHS Compliant

MSL Level = N/A

Mechanical Specification

Parameters	Specifications
Dimension	1.6 x 0.8 x 0.55 mm
Mounting Type	Surface Mount

Environmental Specification

Parameters	Specifications
Operating Temperature Range	-40°C ~ +85°C
Storage Temperature Range	-10°C ~ +40°C
RoHS Compliant	Yes

SMD UWB High Rejection Band Pass Filter



AFII-LC-0048

Request Samples



Check Inventory



1.6 x 0.8 x 0.55 mm

RoHS Compliant

MSL Level = N/A

Ordering Information

Part Number	Description
AFII-LC-0048	SMD UWB High Rejection Band Pass Filter
AFII-LC-0048-EVB	SMD UWB High Rejection Band Pass Filter EVB

Note: Other options not listed may be available upon request via [Abracon online support](#)

SMD UWB High Rejection Band Pass Filter



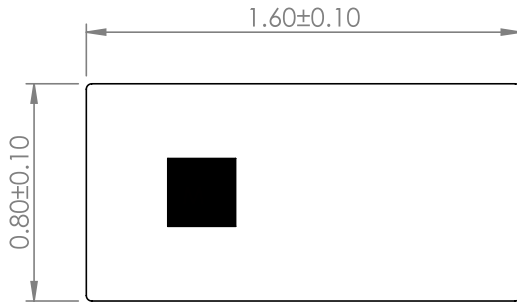
AFII-LC-0048

Request Samples

Check Inventory

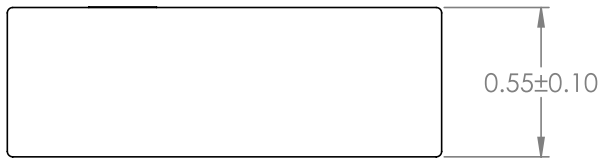
1.6 x 0.8 x 0.55 mm
RoHS Compliant
MSL Level = N/A

Product Dimensions

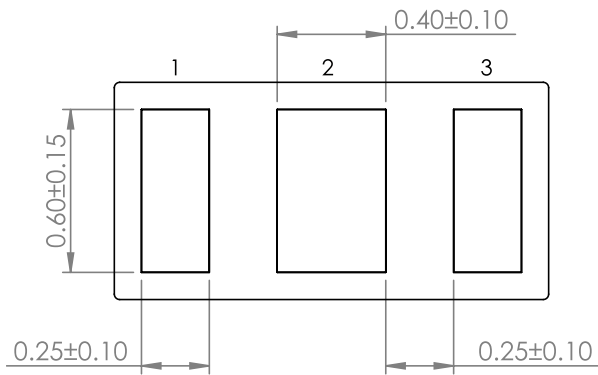


TOP VIEW

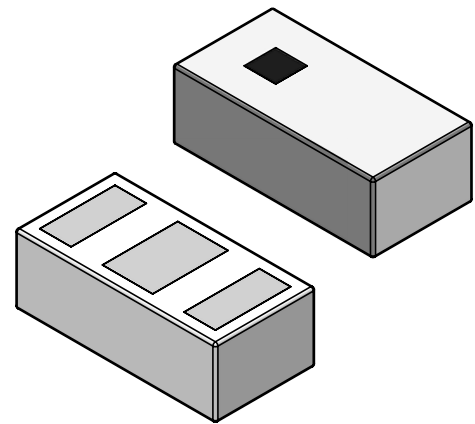
Pin #	Function
1	In/Out
2	GND
3	In/Out
M	Mark



FRONT VIEW



BOTTOM VIEW



Unit: mm

SMD UWB High Rejection Band Pass Filter



AFII-LC-0048

Request Samples



Check Inventory

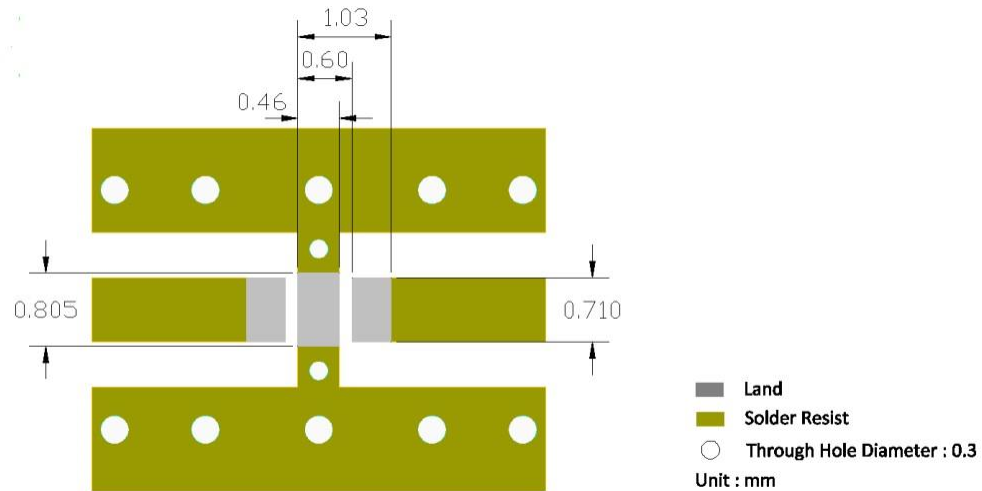


1.6 x 0.8 x 0.55 mm

RoHS Compliant

MSL Level = N/A

Recommended Land Pattern



Unit : mm

Please note: The line width should be designed to achieve a 50-ohm characteristic impedance, depending on the PCB material and thickness. For technical assistance, please contact [Abracon online support](#) through our online support platform.

SMD UWB High Rejection Band Pass Filter



AFII-LC-0048

Request Samples



Check Inventory

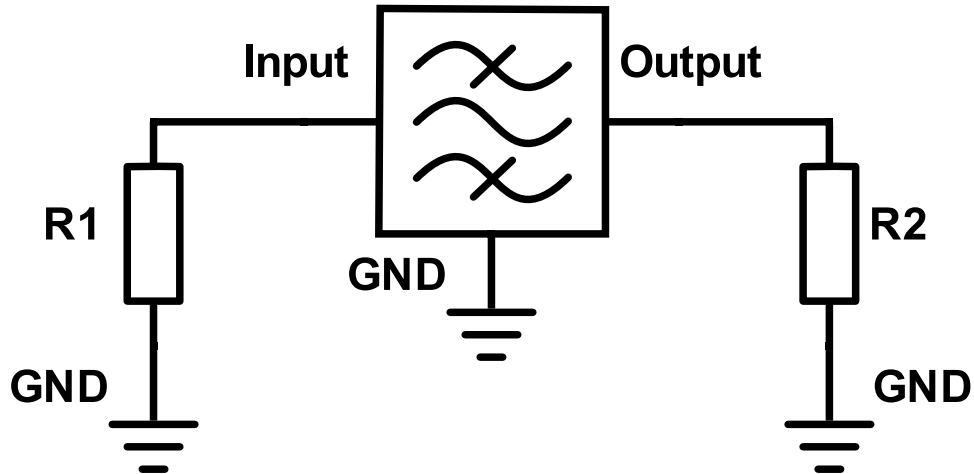


1.6 x 0.8 x 0.55 mm

RoHS Compliant

MSL Level = N/A

Measurement Circuit



Port	Matching Component
Input	R1: 50Ω
Output	R2: 50Ω

SMD UWB High Rejection Band Pass Filter



AFII-LC-0048

Request Samples



Check Inventory

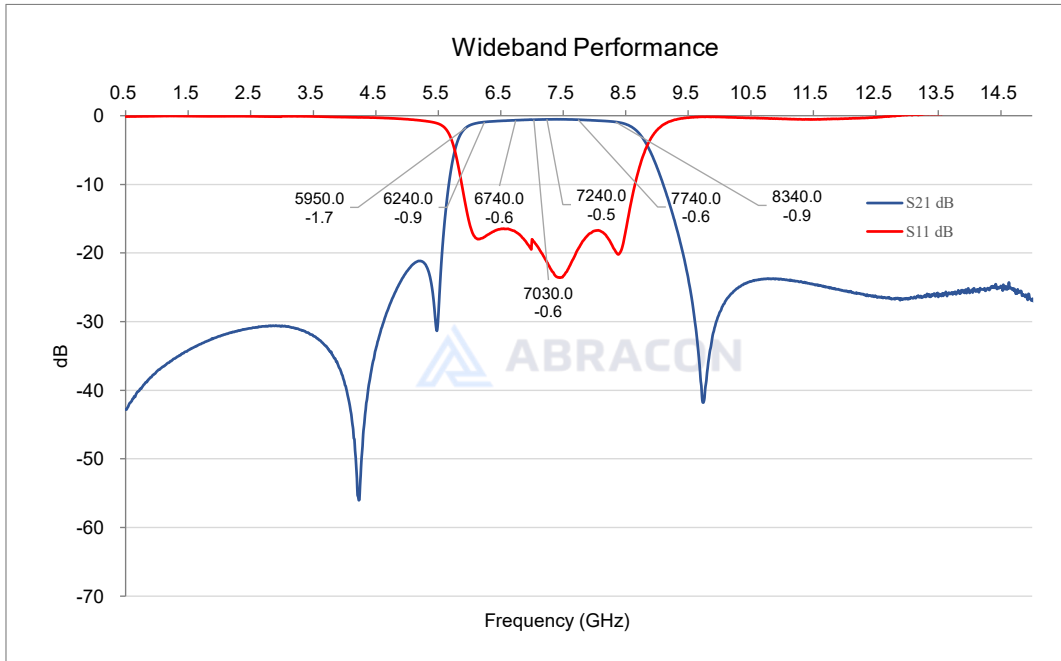


1.6 x 0.8 x 0.55 mm

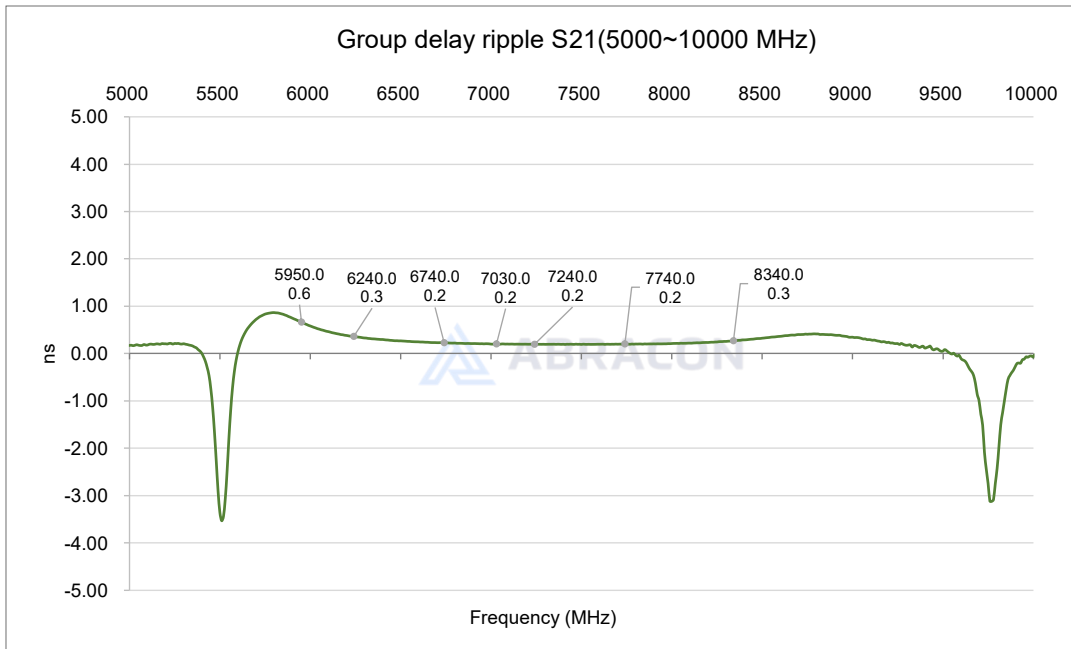
RoHS Compliant

MSL Level = N/A

Frequency Characteristics



Group Delay Ripple



SMD UWB High Rejection Band Pass Filter



AFII-LC-0048

Request Samples



Check Inventory



1.6 x 0.8 x 0.55 mm
RoHS Compliant
MSL Level = N/A

Reflow Profile [JEDEC J-STD-020]

Solder paste: Sn/3.0Ag/0.5Cu

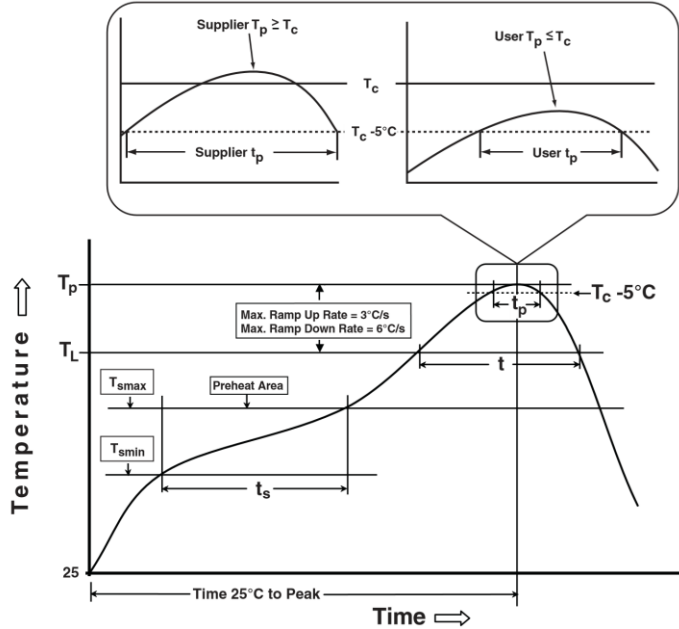


Table 1

SnPb Eutectic Process Classification Temperatures (T_c)		
Package Thickness	Volume mm^3 <350	Volume mm^3 ≥ 350
<2.5mm	235°C	220°C
$\geq 2.5\text{mm}$	220°C	220°C

Table 2

Pb-Free Process Classification Temperatures (T_c)			
Package Thickness	Volume mm^3 <350	Volume mm^3 350-2000	Volume mm^3 >2000
<1.6mm	260°C	260°C	260°C
1.6mm - 2.5mm	260°C	250°C	245°C
>2.5mm	250°C	245°C	245°C

Profile Feature	Sn-Pb Eutectic Assembly	Pb-Free Assembly
Preheat / soak		
Temperature minimum (T_{smin})	100°C	150°C
Temperature maximum (T_{smax})	150°C	200°C
Time (T_{smin} to T_{smax}) (t_s)	60 – 120 sec.	60 – 120 sec.
Average ramp-up rate (T_{smax} to T_p)	3°C/sec. max	3°C/sec. max
Liquidous temperature (T_L)	183°C	217°C
Time at Liquidous (T_L)	60 – 90 sec.	60 – 90 sec.
Peak package body temperature (T_p)*	See Table 1	See Table 2
Time (T_p)** within 5°C of the specified classification temperature (T_c)	20 sec.	10 sec.
Ramp-down rate (T_p to T_{smax})	3°C/sec. max	3°C/sec. max
Time 25°C to peak temperature	6 min. max	8 min. max
Reflow cycles	2 max	2 max

*Tolerance for peak profile temperature (T_p) is defined as a supplier minimum and a user maximum.

**Tolerance for time at peak profile temperature (t_p) is defined as a supplier minimum and a user maximum.



5101 Hidden Creek Ln Spicewood TX 78669
 Phone: 512-371-6159 | Fax: 512-351-8858
 For terms and conditions of sales, please visit:
www.abracon.com

REVISED: 11-25-24

ABRACON IS
 ISO9001-2015
 CERTIFIED

SMD UWB High Rejection Band Pass Filter



AFII-LC-0048

Request Samples



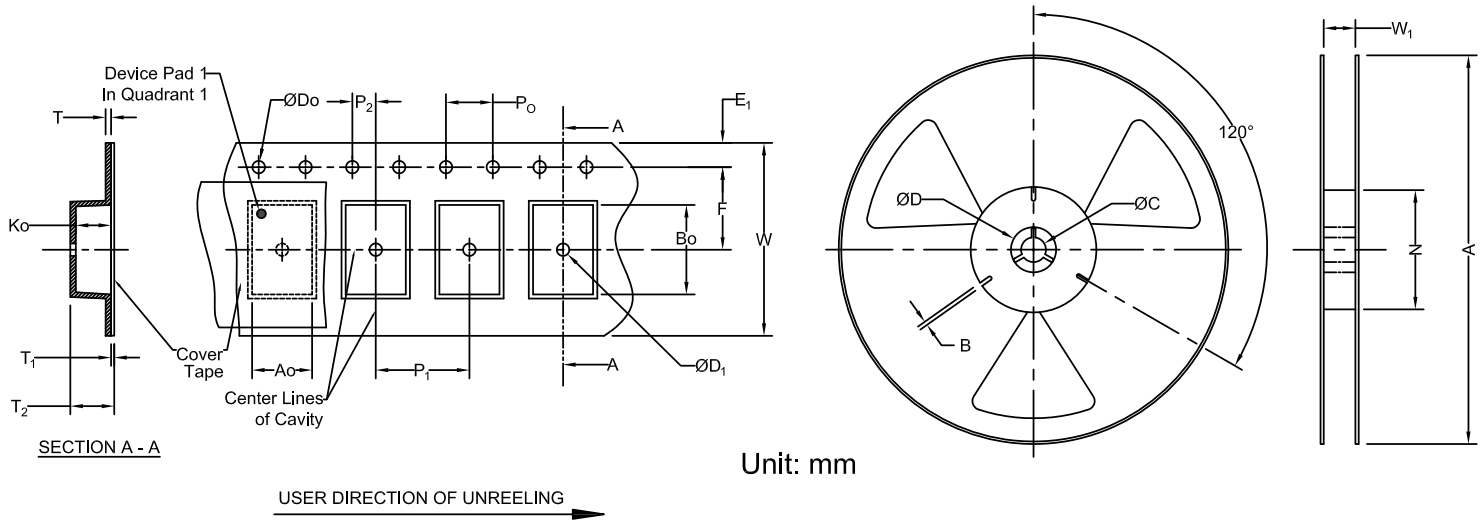
Check Inventory



1.6 x 0.8 x 0.55 mm
RoHS Compliant
MSL Level = N/A

Packaging

Tape & Reel Dimension



Carrier Tape Specifications (mm)

E1	D0	P0	P2	F	P1	W	A0	B0	T ₂	Reel Qty
1.75 ± 0.1	1.5 ± 0.1	4.0 ± 0.1	2.0 ± 0.05	3.5 ± 0.05	2.0 ± 0.05	8.0 ± 0.3	1.00 ± 0.10	1.80 ± 0.10	0.7 Max	4,000

Reel Specifications (mm)

A	W ₁	N	C
178 ± 2.0	10.0 ± 1.5	58 ± 2.0	13.5 ± 0.2

ATTENTION: Abracon LLC's products are Commercial-Off-The-Shelf ("COTS"), which are designed, intended, and validated for use in commercial, industrial, and automotive applications. The customer is responsible for testing and verifying the performance of an Abracon solution to meet their system-level requirements.



5101 Hidden Creek Ln Spicewood TX 78669
 Phone: 512-371-6159 | Fax: 512-351-8858
 For terms and conditions of sales, please visit:
www.abracon.com

REVISED: 11-25-24

ABRACON IS
 ISO9001-2015
 CERTIFIED