

SD50P300WD15QP

▶ SD50 STATUS DISPLAY



SD50 Status Display with 15 State Discrete; 8 x 96 pixels

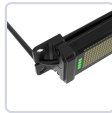
White Display LEDs; RGB Indicator LEDs

300 mm length; Polycarbonate; 12-30 V dc

150 mm (6 in) 5-pin M12 PVC Pigtail QD

Part Number: 817046

CERTIFICATIONS



ACCESSORIES TO COMPLETE YOUR SYSTEM

Add all or individual items to your cart. More options available below.

	<p>PRO-KIT</p> <p>Pro-series lighting and select sensor products Kit includes config cable, splitter, and power supply Required for initial software configuration only</p>
	<p>LMBSD50</p> <p>Bracket: For Use with SD50 Contains 2 Brackets and Screws</p>


SPECIFICATIONS

Power	DC
Display	Yes
Ships with Battery	No
Primary Housing Material	Polycarbonate
Indication	Yes
Color Input Control	Multiple (One or more wires/color, enables more colors than input wires)
Number of Colors	14
Product Size (mm)	50
Color Technology	RGB IO-Link
Color Option 1	White

Animation Option 1	Programmable
Connection	Integral QD
Quick Disconnect Type	M12
Wire Selectable Function	Programmable
Number of Input Pins/Conductors	4
Array Length (mm)	300
Physical Dimensions (LxWxH or DxH mm)	325x50x28
Primary Housing Color	Black
Primary Window Material	Polycarbonate
Pro-Editor Compatible (Discrete)	Yes

COMPATIBLE PRODUCTS

PRO CONVERTER CABLE

	<p>PRO-KIT</p> <p>Pro-series lighting and select sensor products Kit includes config cable, splitter, and power supply Required for initial software configuration only</p>
---	--

DOUBLE-ENDED CORDSETS

	<p>BC-M12F5-M12M5-22-1</p> <p>Cordset: Double Ended M12 5-pin Straight Female; 5-pin Straight Male Connectors 1 m (3.28 ft) 5x22 Black PVC Jacket Nickel-Plated Brass Coupling Nuts</p>
	<p>BC-M12F5-M12M5-22-10</p> <p>Cordset: Double Ended M12 5-pin Straight Female; 5-pin Straight Male Connectors 10 m (32.8 ft) 5x22 Black PVC Jacket Nickel-Plated Brass Coupling Nuts</p>
	<p>BC-M12F5-M12M5-22-2</p> <p>Cordset: Double Ended M12 5-pin Straight Female; 5-pin Straight Male Connectors 2 m (6.56 ft) 5x22 Black PVC Jacket Nickel-Plated Brass Coupling Nuts</p>
	<p>BC-M12F5-M12M5-22-5</p> <p>Cordset: Double Ended M12 5-pin Straight Female; 5-pin Straight Male Connectors 5 m (16.4 ft) 5x22 Black PVC Jacket Nickel-Plated Brass Coupling Nuts</p>

	<p>BC-M12F5-M12M5-22-8</p> <p>Cordset: Double Ended M12 5-pin Straight Female; 5-pin Straight Male Connectors 8 m (26.25 ft) 5x22 Black PVC Jacket Nickel-Plated Brass Coupling Nuts</p>
	<p>LMBSD50</p> <p>Bracket: For Use with SD50 Contains 2 Brackets and Screws</p>
	<p>LMBSD50-180S</p> <p>Bracket: For Use with SD50 180 Degree Rotation Set of Two Stainless Steel</p>
	<p>LMBSD50-180SMAG</p> <p>Bracket: For Use with SD50 180 Degree Rotation; Stainless Steel Magnetic Mounting Kit Set of Two Up to 16 lb Pull</p>
	<p>LMBSD50MAG</p> <p>Bracket: For Use with SD50 Magnetic Mounting Kit Set of Two Up to 16 lb Pull</p>