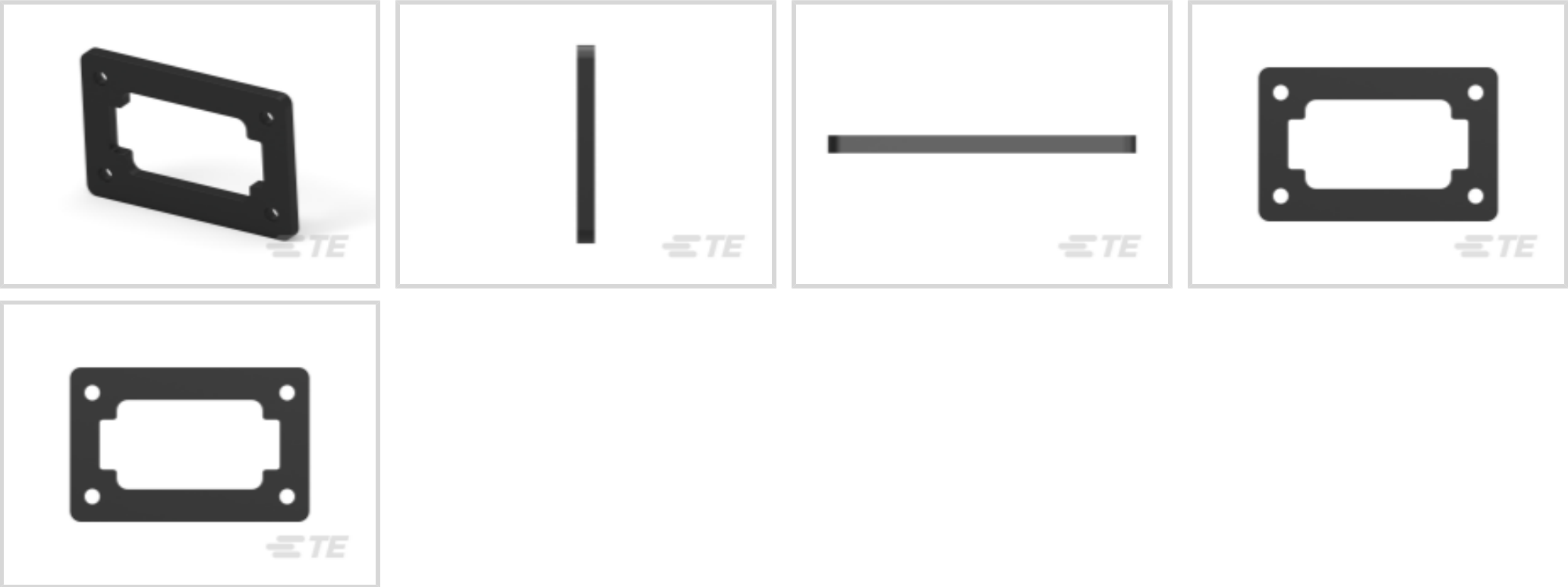




Connectors > Connector Accessories > Connector Seals & Cavity Plugs



Connector Seal & Plug Type: **Gasket**
Primary Product Material: **Closed Cell Sponge**
Primary Product Color: **Black**
Operating Temperature (Max): **107 °C [225 °F]**
Contains Lubricant: **No**

Features

Industry Standards

UL Flammability Rating	UL 94HBF
------------------------	----------

Packaging Features

Packaging Method	Box
------------------	-----

Product Type Features

Connector Seal & Plug Type	Gasket
----------------------------	--------

Body Features

Primary Product Material	Closed Cell Sponge
Primary Product Color	Black

Usage Conditions

Operating Temperature (Max)	107 °C[225 °F]
Operating Temperature Range	-57 – 107 °C[-71 – 225 °F]

Other

Contains Lubricant	No
EU RoHS Compliance	Compliant



EU ELV Compliance	Compliant
-------------------	-----------

Product Compliance

For compliance documentation, visit the product page on TE.com>

EU RoHS Directive 2011/65/EU	Compliant
EU ELV Directive 2000/53/EC	Compliant
China RoHS 2 Directive MIIT Order No 32, 2016	No Restricted Materials Above Threshold
EU REACH Regulation (EC) No. 1907/2006	Current ECHA Candidate List: JUNE 2024 (241) Candidate List Declared Against: JUNE 2024 (241) Does not contain REACH SVHC
Halogen Content	Not Low Halogen - contains Br or Cl > 900 ppm.
Solder Process Capability	Not reviewed for solder process capability

Product Compliance Disclaimer

This information is provided based on reasonable inquiry of our suppliers and represents our current actual knowledge based on the information they provided. This information is subject to change. The part numbers that TE has identified as EU RoHS compliant have a maximum concentration of 0.1% by weight in homogenous materials for lead, hexavalent chromium, mercury, PBB, PBDE, DBP, BBP, DEHP, DIBP, and 0.01% for cadmium, or qualify for an exemption to these limits as defined in the Annexes of Directive 2011/65/EU (RoHS2). Finished electrical and electronic equipment products will be CE marked as required by Directive 2011/65/EU. Components may not be CE marked. Additionally, the part numbers that TE has identified as EU ELV compliant have a maximum concentration of 0.1% by weight in homogenous materials for lead, hexavalent chromium, and mercury, and 0.01% for cadmium, or qualify for an exemption to these limits as defined in the Annexes of Directive 2000/53/EC (ELV). Regarding the REACH Regulation, the information TE provides on SVHC in articles for this part number is based on the latest European Chemicals Agency (ECHA) 'Guidance on requirements for substances in articles' posted at this URL: <https://echa.europa.eu/guidance-documents/guidance-on-reach>

Compatible Parts



TE Part # DT-RT1
EXT TOOL, FRONT RELEASE



TE Part # CAT-J41-DDRC
DEUTSCH DT Receptacle Connectors



TE Part # CAT-D487-CH8172
DEUTSCH DT Series Housings & Connectors

Also in the Series | [DEUTSCH DT](#)



Automotive Connector Caps & Covers (19)



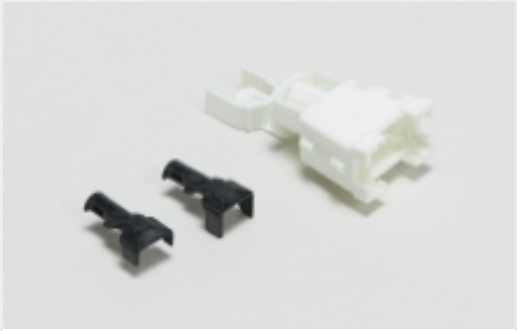
Automotive Housings(738)



Connector Caps & Covers(1)



Connector Strain Relief(31)



Rectangular Backshells & Clamps(3)

Customers Also Bought



TE Part #W12P
WEDGE LOCK, 12P, REC, GRN, DT



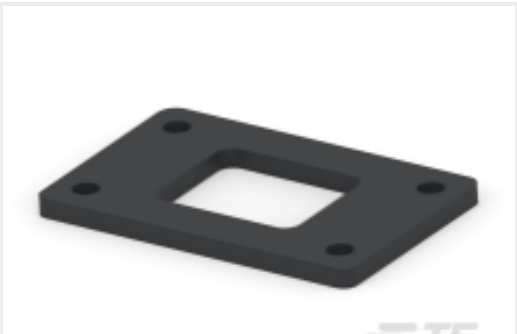
TE Part #CAT-J41-DDRC
DEUTSCH DT Receptacle Connectors



TE Part #DTP4P-L012-GKT
GASKET, 4P, BLK, DTP



TE Part #DT4P-L012-GKT
GASKET, 4P, BLK, DT/DTM



TE Part #DT8P-L012-GKT
GASKET, 8P, BLK, DT/DTM



TE Part #5-2176414-0
7W STD M/OX 5% 2K2



TE Part #DT12P-DC
PROTECT CVR, 12P, REC, GRY, DT

Documents

Product Drawings
GASKET DT 12 WY FLD RC
English

CAD Files
Customer View Model
ENG_CVM_CVM_DT12-L012-GKT_B.3d_igs.zip
English
Customer View Model



[ENG_CVM_CVM_DT12-L012-GKT_B.3d_stp.zip](#)

English

[3D PDF](#)

3D

Customer View Model

[ENG_CVM_CVM_DT12-L012-GKT_B.2d_dxf.zip](#)

English

By downloading the CAD file I accept and agree to the [Terms and Conditions](#) of use.

Datasheets & Catalog Pages

[TERMINALS AND CONNECTORS](#)

English

[CONNECTOR SELECTOR](#)

English

Product Specifications

[Application Specification](#)

English