



Product Change Notification

Date Issued :	February 12, 2025	PCN Number :	516605
Reason for Change :	Obsolete		
Description of Change :	This notification is to inform you about the obsolescence of parts referenced in this notice. Please connect with your Molex Sales Engineer for additional queries related to possible alternative solutions.		
Reason for Short Notice :	Tool Breakage		
Planned Implementation Date :	May 23, 2025		
Recommended replacement parts :	Please see the attached replacement parts list .xls file.		
Last Time Buy Date for Obsolete Parts :	March 30, 2025		
Last Time Ship Date for Obsolete Parts :	April 30, 2025		

Before Picture

39303041 / 39303043

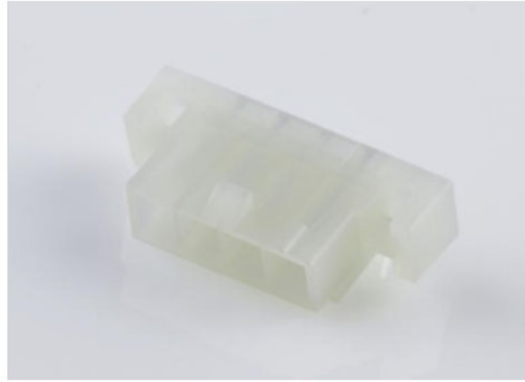


Photo is used as representation of product only
and may not be exact to product you receive.

1

Molex Confidential Information
© 2016 Molex – All Rights Reserved. Unauthorized Reproduction/Distribution is Prohibited.



After Picture

39013183

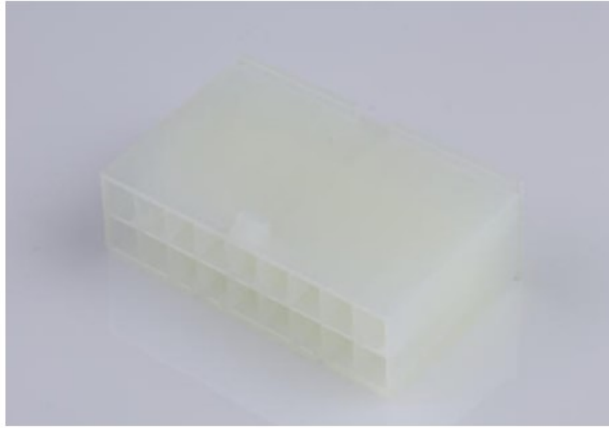


Photo is used as representation of product only
and may not be exact to product you receive.

2

Molex Confidential Information
© 2016 Molex – All Rights Reserved. Unauthorized Reproduction/Distribution is Prohibited.

molex

RELEASED

Additional Information :**Overview**

- Mold is at end of life, no sales in the last two years, no justification to retool
- Product Impact
 - Part numbers being eliminated
- Part Number Impact
 - 39303041
 - Replacement 39303045 – Peg version instead of flange
 - 39303043
 - Replacement 39303047 – Peg version instead of flange
 - 39013183
 - Replacement 39012181 – Panel Mount with ears
- Qualification Reports, PPAPs, and samples – N/A

3 Molex Confidential Information
© 2016 Molex – All Rights Reserved. Unauthorized Reproduction/Distribution is Prohibited.

molex

RELEASED

"After the last time ship date, Molex will no longer manufacture the products included within this notification and all related tooling will be decommissioned.

For assets that are customer owned, the owner has 90 days after the last time ship date to claim the tooling."

You may address inquires regarding this PCN by clicking on the below link

mailto:pcn_coordinator@molex.com?subject=PCN_Notification:516605

or contact your Local Sales Engineer.

Note: While responding, please retain " PCN Notification : **PCN Notification: 516605** " in the e-mail Subject line for faster response.

[Molex, LLC](#)

2222 Wellington Court

Lisle, IL 60532

TEL (800) 786-6539

www.molex.com