

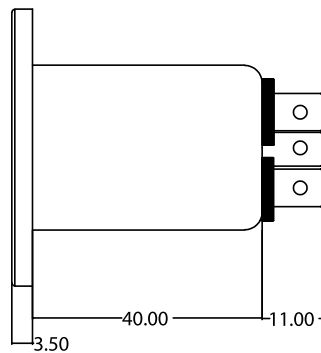
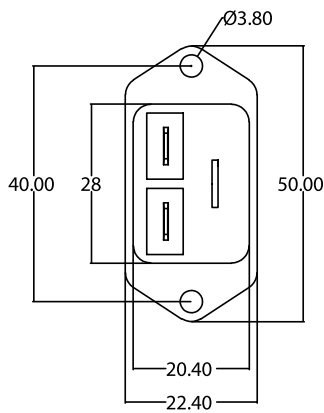
IEC Inlet Single Stage Power Line Filters

multicomp PRO

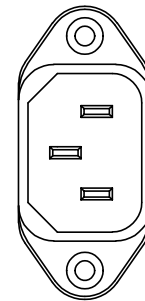
**RoHS
Compliant**



Mechanical Details

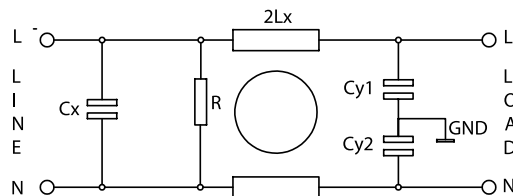


Connector Type
C14



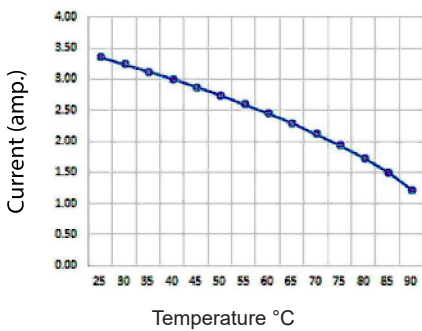
Dimensions : Millimetres

Electrical Schematic



MP007500

Derating curve



50Ω to 50Ω Typical Insertion Loss

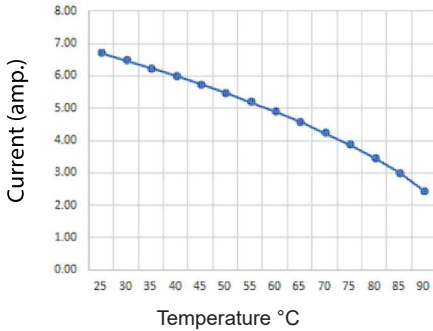
Frequency MHz	0.01	0.5	1	5	10	30
Common DB	27	40	46	51	62	27
Differential DB	41	64	57	59	34	4

IEC Inlet Single Stage Power Line Filters



MP007501

Derating curve



50Ω to 50Ω Typical Insertion Loss

Frequency MHz	0.1	0.5	1	5	10	30
Common DB	31	59	69	41	28	12
Differential DB	18	32	39	65	46	28

Specifications

	MP007500	MP007501
Rated Voltage (MAX)	3AMP,120/250V AC 50-60HZ	6AMP,120/250V AC 50-60HZ
Hi-pot Rating (One Minute)	Line to Ground: 3000V DC	
	Line to Line : 1100V DC	
Maximum Leakage Line to Ground	0.26mA @120V AC 60 Hz	
	0.52mA @250V AC 50 Hz	
Climate Class: 25/100/21	Temperature Range: -25°C to +100°C	
	Overload Current: 1.5x Rated ct. for 1 min.	
Approval	UL Approved	

Part Number Table

Description	Part Number
Power Line Filter, General Purpose, 250V AC, 3A, Single Phase, 1 Stage, IEC Inlet IP66 Protect(Water Proof)	MP007500
Power Line Filter, General Purpose, 250V AC, 6A, Single Phase, 1 Stage, IEC Inlet IP66 Protect (Water Proof)	MP007501

Important Notice : This data sheet and its contents (the "Information") belong to the members of the AVNET group of companies (the "Group") or are licensed to it. No licence is granted for the use of it other than for information purposes in connection with the products to which it relates. No licence of any intellectual property rights is granted. The Information is subject to change without notice and replaces all data sheets previously supplied. The Information supplied is believed to be accurate but the Group assumes no responsibility for its accuracy or completeness, any error in or omission from it or for any use made of it. Users of this data sheet should check for themselves the Information and the suitability of the products for their purpose and not make any assumptions based on information included or omitted. Liability for loss or damage resulting from any reliance on the Information or use of it (including liability resulting from negligence or where the Group was aware of the possibility of such loss or damage arising) is excluded. This will not operate to limit or restrict the Group's liability for death or personal injury resulting from its negligence. Multicomp Pro is the registered trademark of Premier Farnell Limited 2019.

Newark.com/multicomp-pro
 Farnell.com/multicomp-pro
 sg.element14.com/b/multicomp-pro

