

# Dual Stage Power Line Filters Chassis Mount

**multicomp** PRO

**RoHS  
Compliant**



Quick Connect Terminal



Stud Terminal

## Applications

- Electrical and electronic equipment
- Consumer goods
- Household equipment
- Electronic data processing equipment
- Office automation and datacom equipment
- EV Application
- Various noisy application requiring high filter performance

## Features

- Dual-stage filters are designed for easy and fast chassis mounting.
- These are single phase terminals
- Very high differential and common-mode attenuation
- UL Approval

## Specifications

Max. Continuous Operating Voltage : 250V AC, 50/60Hz  
 Operating Frequency : DC to 400Hz  
 Leakage Current @ 250V/50Hz : 0.74mA  
 Rated Currents : 1A to 20A @40°C  
 Temperature Range : -25°C to +100°C (operation and storage)

## Filter Selection Table

Part Number	Rated Current @40°C (25°C)	Leakage Current @ 250V / 50Hz	Inductance (L-L)	Capacitance (L-N)	Capacitance (L-G)	Resistance (L-N)	Connection Type			Weight (g)
	A	mA	$\Sigma$ L mH	$\Sigma$ Cx $\mu$ F	$\Sigma$ Cy nF	$\Sigma$ R K $\Omega$				
MP007493	3(3.45)	0.5	28	0.99	6.2	470	•	-	-	155
MP007494	6(6.9)	0.67	16	1.41	8.6	330	•	-	-	190
MP007497	16(18.4)	1.02	8	3	22	220	•	-	-	440
MP007499	20(23)	1.02	5.4	3	22	220	•	-	•	530
<b>Low Leakage Version</b>										
MP007496	10(11.5)	0.08	16	1.41	1.88	330	•	-	-	350

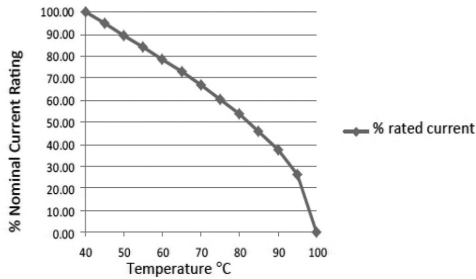
Newark.com/multicomp-pro  
 Farnell.com/multicomp-pro  
 sg.element14.com/b/multicomp-pro

**multicomp** PRO

# Dual Stage Power Line Filters Chassis Mount

**multicomp** PRO

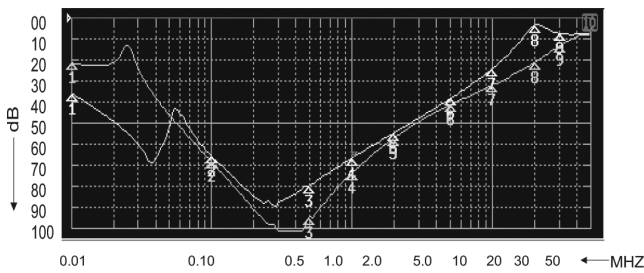
Temperature Derating Curve for EMC Filters Rated at 40°C Ambient and 100°C Max.



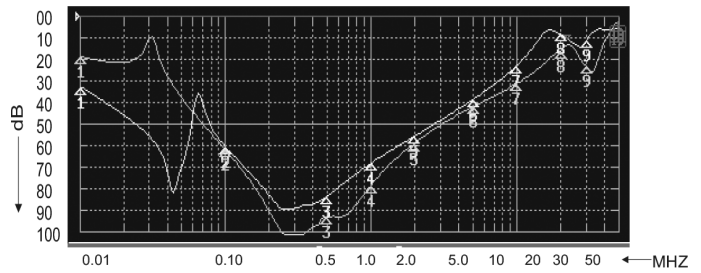
## Typical Insertion Loss, dB (50/50Ω)

Common mode -   
Differential mode -

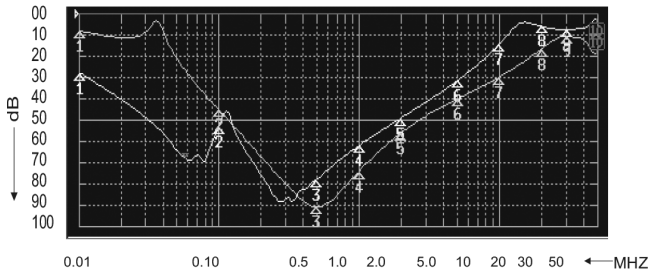
1 to 6 A



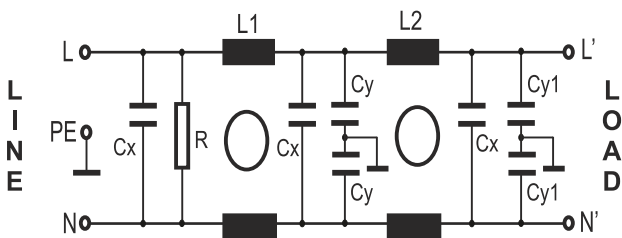
8 to 12 A



16 to 20 A



## Schematic Diagram



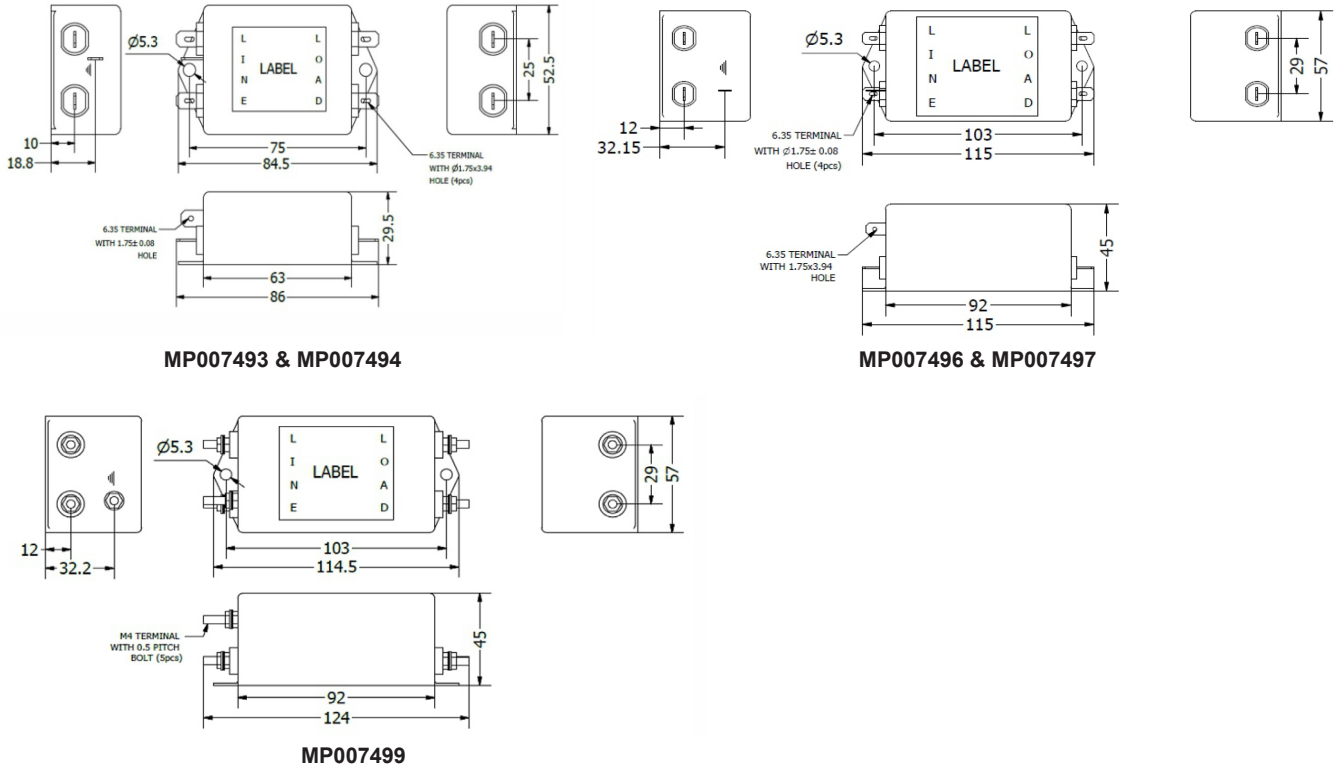
Newark.com/multicomp-pro  
Farnell.com/multicomp-pro  
sg.element14.com/b/multicomp-pro

**multicomp** PRO

# Dual Stage Power Line Filters Chassis Mount

**multicomp** PRO

## Diagram



Dimensions : Millimetres

## Part Number Table

Description	Part Number
Power Line Filter, Very High Performance, 250V AC, 3A, Single Phase, 2 Stage, Quick Connect	MP007493
Power Line Filter, Very High Performance, 250V AC, 6A, Single Phase, 2 Stage, Quick Connect	MP007494
Power Line Filter, Very High Performance, 250V AC, 10A, Single Phase, 2 Stage, Chassis Mount	MP007496
Power Line Filter, Very High Performance, 250V AC, 16 A, Single Phase, 2 Stage, Quick Connect	MP007497
Power Line Filter, Very High Performance, 250V AC, 20 A, Single Phase, 2 Stage, Stud Terminals	MP007499

**Important Notice :** This data sheet and its contents (the "Information") belong to the members of the AVNET group of companies (the "Group") or are licensed to it. No licence is granted for the use of it other than for information purposes in connection with the products to which it relates. No licence of any intellectual property rights is granted. The Information is subject to change without notice and replaces all data sheets previously supplied. The Information supplied is believed to be accurate but the Group assumes no responsibility for its accuracy or completeness, any error in or omission from it or for any use made of it. Users of this data sheet should check for themselves the Information and the suitability of the products for their purpose and not make any assumptions based on information included or omitted. Liability for loss or damage resulting from any reliance on the Information or use of it (including liability resulting from negligence or where the Group was aware of the possibility of such loss or damage arising) is excluded. This will not operate to limit or restrict the Group's liability for death or personal injury resulting from its negligence. Multicomp Pro is the registered trademark of Premier Farnell Limited 2019.

Newark.com/multicomp-pro  
Farnell.com/multicomp-pro  
sg.element14.com/b/multicomp-pro

**multicomp** PRO