

Single Stage Power Line Filters Chassis Mount

multicomp PRO

**RoHS
Compliant**



Quick Connect Terminal



Stud Terminal

Applications

- Electrical and electronic equipment
- Consumer goods
- Household equipment
- Electronic data processing equipment
- Office automation and datacom equipment

Features

- Single-stage filters are designed for easy and fast chassis mounting.
- These are single phase terminals
- High differential mode performance
- UL Approval

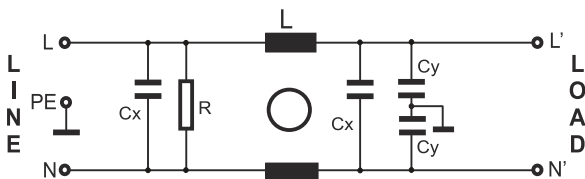
Specifications

Max. Continuous Operating Voltage : 250V AC, 50/60Hz
 Operating Frequency : DC to 400Hz
 Leakage Current @ 250V/50Hz : 0.74mA
 Rated Currents : 6A to 20A @40°C
 Temperature Range : -25°C to +100°C (operation and storage)

Filter Selection Table

Part Number	Rated Current @40°C (25°C)	Inductance (L-L)	Capacitance (L-N)	Capacitance (L-G)	Resistance (L-N)	Connection Type			Weight (g)
	A	ΣL mH	ΣC_x μF	ΣC_y nF	ΣR K Ω				
MP007476	6(6.9)	1	0.3	9.4	1000	•	-		80
MP007478	10(11.5)	0.8	0.3	9.4	1000	•	-		85
MP007479	20(23)	0.6	9.4	9.4	1000	•	-		210
MP007480	20(23)	0.6	9.4	9.4	1000	-	-	•	210

Schematic Diagram



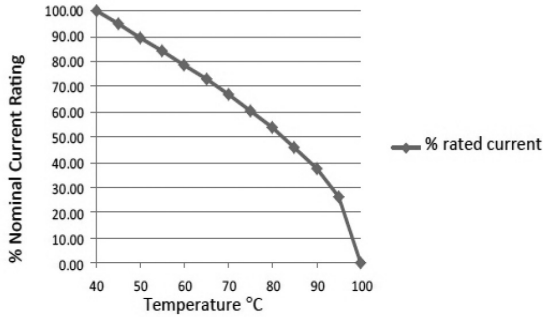
Newark.com/multicomp-pro
 Farnell.com/multicomp-pro
 sg.element14.com/b/multicomp-pro

multicomp PRO

Single Stage Power Line Filters Chassis Mount



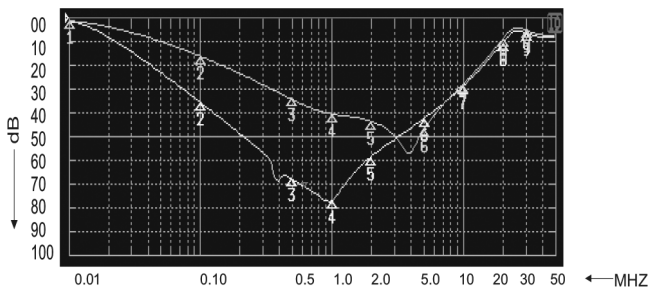
Temperature Derating Curve for EMC Filters Rated at 40°C Ambient and 100°C Max.



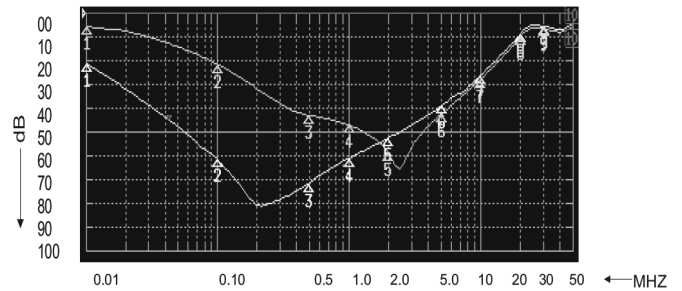
Typical Insertion Loss, dB (50/50Ω)

Common mode -
Differential mode -

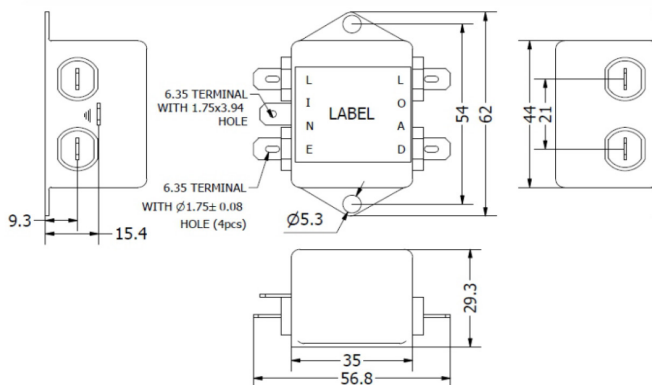
6 to 10 A



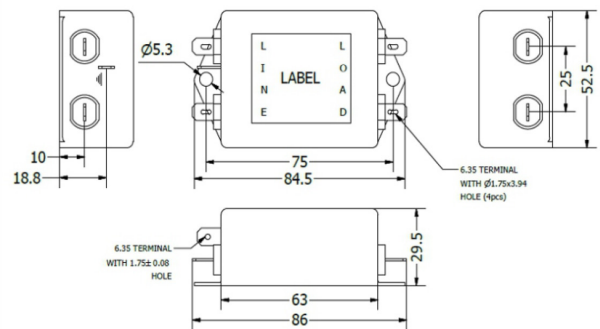
20A to 30 A



Diagram



MP007476 & MP007478



MP007479

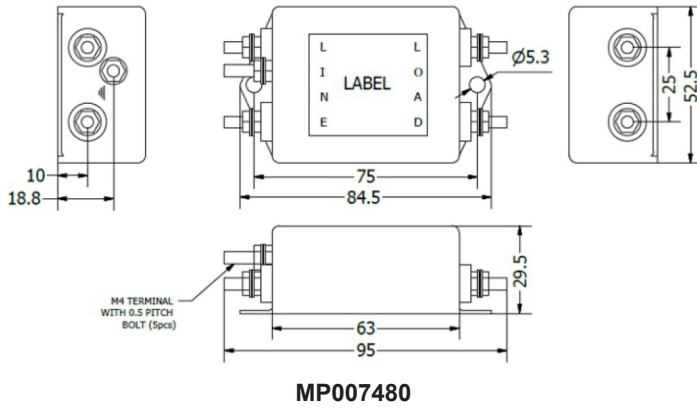
Dimensions : Millimetres

Newark.com/multicomp-pro
Farnell.com/multicomp-pro
sg.element14.com/b/multicomp-pro



Single Stage Power Line Filters Chassis Mount

multicomp PRO



Dimensions : Millimetres

Part Number Table

Description	Part Number
Power Line Filter, General Purpose, 250V AC, 6A, Single Phase, 1 Stage, Quick Connect	MP007476
Power Line Filter, General Purpose, 250V AC, 10A, Single Phase, 1 Stage, Quick Connect	MP007478
Power Line Filter, General Purpose, 250V AC, 20A, Single Phase, 1 Stage, Quick Connect	MP007479
Power Line Filter, General Purpose, 250V AC, 20A, Single Phase, 1 Stage, Stud Terminals	MP007480

Important Notice : This data sheet and its contents (the "Information") belong to the members of the AVNET group of companies (the "Group") or are licensed to it. No licence is granted for the use of it other than for information purposes in connection with the products to which it relates. No licence of any intellectual property rights is granted. The Information is subject to change without notice and replaces all data sheets previously supplied. The Information supplied is believed to be accurate but the Group assumes no responsibility for its accuracy or completeness, any error in or omission from it or for any use made of it. Users of this data sheet should check for themselves the Information and the suitability of the products for their purpose and not make any assumptions based on information included or omitted. Liability for loss or damage resulting from any reliance on the Information or use of it (including liability resulting from negligence or where the Group was aware of the possibility of such loss or damage arising) is excluded. This will not operate to limit or restrict the Group's liability for death or personal injury resulting from its negligence. Multicomp Pro is the registered trademark of Premier Farnell Limited 2019.

Newark.com/multicomp-pro
Farnell.com/multicomp-pro
sg.element14.com/b/multicomp-pro

multicomp PRO