

# Single Stage Power Line Filters Chassis Mount

**multicomp** PRO

**RoHS  
Compliant**



Quick Connect Terminal

## Applications

- Electrical and electronic equipment
- Consumer goods/Industrial Application
- Machinery and Building Automation
- Medical equipment
- Electronic data processing equipment
- Office automation and datacom equipment




## Features

- Single-stage filters are designed for easy and fast chassis mounting.
- These are single phase terminals
- High differential mode performance
- UL Approval

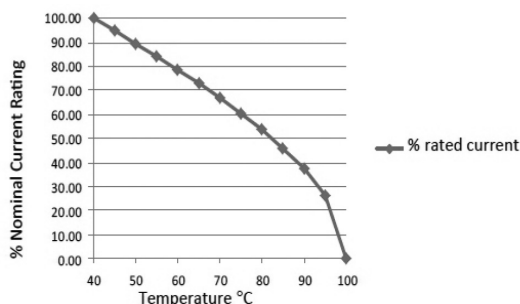
## Specifications

|                                   |   |
|-----------------------------------|---|
| Max. Continuous Operating Voltage | : 250V AC, 50/60Hz                        |
| Operating Frequency               | : DC to 400Hz                             |
| Leakage Current @ 250V/50Hz       | : 0.66mA                                  |
| Leakage Current @ 250V/50Hz       | : 0.07mA (Low Leakage Version)            |
| Rated Currents                    | : 6A to 20A @40°C                         |
| Temperature Range                 | : -25°C to +100°C (operation and storage) |

## Filter Selection Table

| Part Number | Rated Current<br>@40°C<br>(25°C) | Inductance<br>(L-L)<br>ΣL<br>mH | Capacitance<br>(L-N)<br>ΣCx<br>μF | Capacitance<br>(L-G)<br>ΣCy<br>nF | Resistance<br>(L-N)<br>ΣR<br>KΩ | Connection Type   |   |   | Weight<br>(g) |
|-------------|----------------------------------|---------------------------------|-----------------------------------|-----------------------------------|---------------------------------|---|---|---|---------------|
|             | A                                |                                 |                                   |                                   |                                 |  |  |  |               |
| MP007487    | 10(11.5)                         | 1.6                             | 0.94                              | 9.4                               | 470                             | •   | -   | -   | 210           |
| MP007488    | 16(18.4)                         | 1.3                             | 0.66                              | 9.4                               | 1000                            | •   | -   | -   | 250           |

## Temperature Derating Curve for EMC Filters Rated at 40°C Ambient and 100°C Max.



Newark.com/multicomp-pro  
Farnell.com/multicomp-pro  
sg.element14.com/b/multicomp-pro

**multicomp** PRO

# Single Stage Power Line Filters Chassis Mount

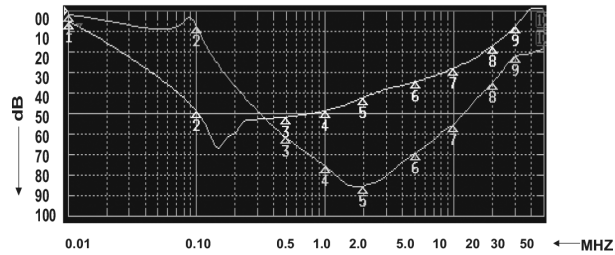
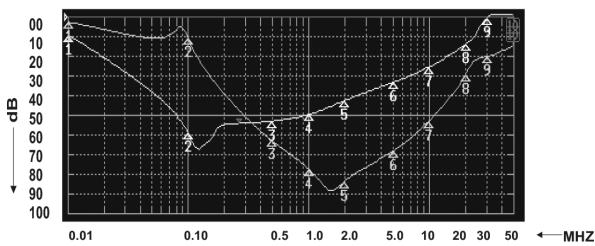


## Typical Insertion Loss, dB (50/50Ω)

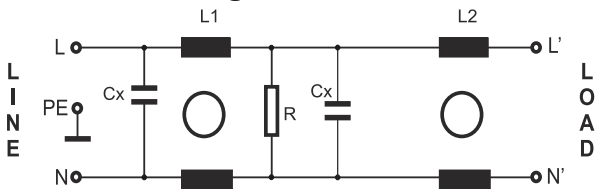
Common mode -   
Differential mode -

6 to 10 A

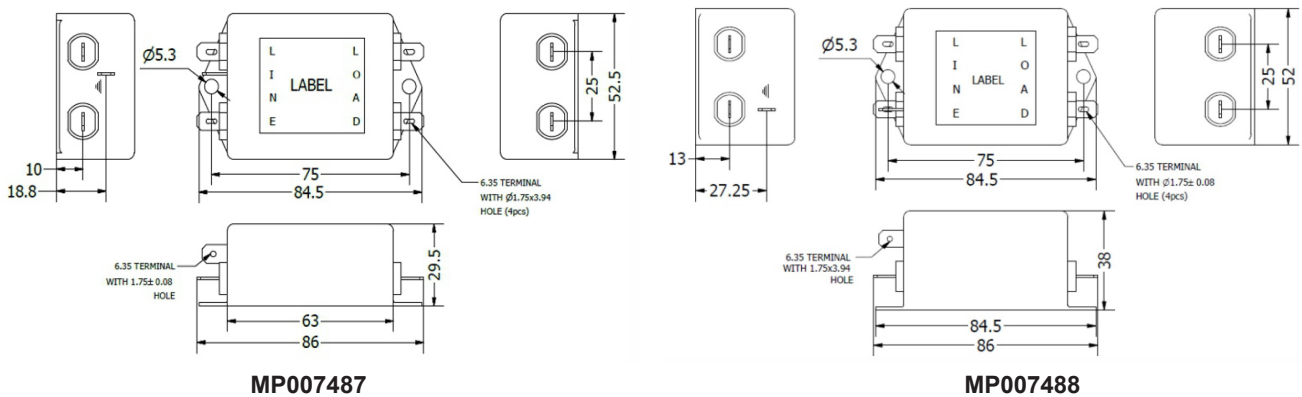
12 to 16 A



## Schematic Diagram



## Diagram



Dimensions : Millimetres

## Part Number Table

| Description  | Part Number |
|--|-------------|
| Power Line Filter, High Performance, 250V AC, 10 A, Single Phase, 2 Stage, Quick Connect | MP007487    |
| Power Line Filter, High Performance, 250V AC, 16 A, Single Phase, 2 Stage, Quick Connect | MP007488    |

**Important Notice :** This data sheet and its contents (the "Information") belong to the members of the AVNET group of companies (the "Group") or are licensed to it. No licence is granted for the use of it other than for information purposes in connection with the products to which it relates. No licence of any intellectual property rights is granted. The Information is subject to change without notice and replaces all data sheets previously supplied. The Information supplied is believed to be accurate but the Group assumes no responsibility for its accuracy or completeness, any error in or omission from it or for any use made of it. Users of this data sheet should check for themselves the Information and the suitability of the products for their purpose and not make any assumptions based on information included or omitted. Liability for loss or damage resulting from any reliance on the Information or use of it (including liability resulting from negligence or where the Group was aware of the possibility of such loss or damage arising) is excluded. This will not operate to limit or restrict the Group's liability for death or personal injury resulting from its negligence. Multicomp Pro is the registered trademark of Premier Farnell Limited 2019.

Newark.com/multicomp-pro  
Farnell.com/multicomp-pro  
sg.element14.com/b/multicomp-pro

